

***SUPPLEMENTARY MATERIAL***

catalogue

***SUPPLEMENTARY MATERIAL***.....1

**1. Supplementary Table S1**.....2

**2. Supplementary Figures**.....3

    2.1 **Supplementary Figure S1** .....3

    2.2 **Supplementary Figure S2** .....4

    2.3 **Supplementary Figure S3** .....5

    2.4 **Supplementary Figure S4** .....6

    2.5 **Supplementary Figure S5** .....7

    2.6 **Supplementary Figure S6** .....8

---

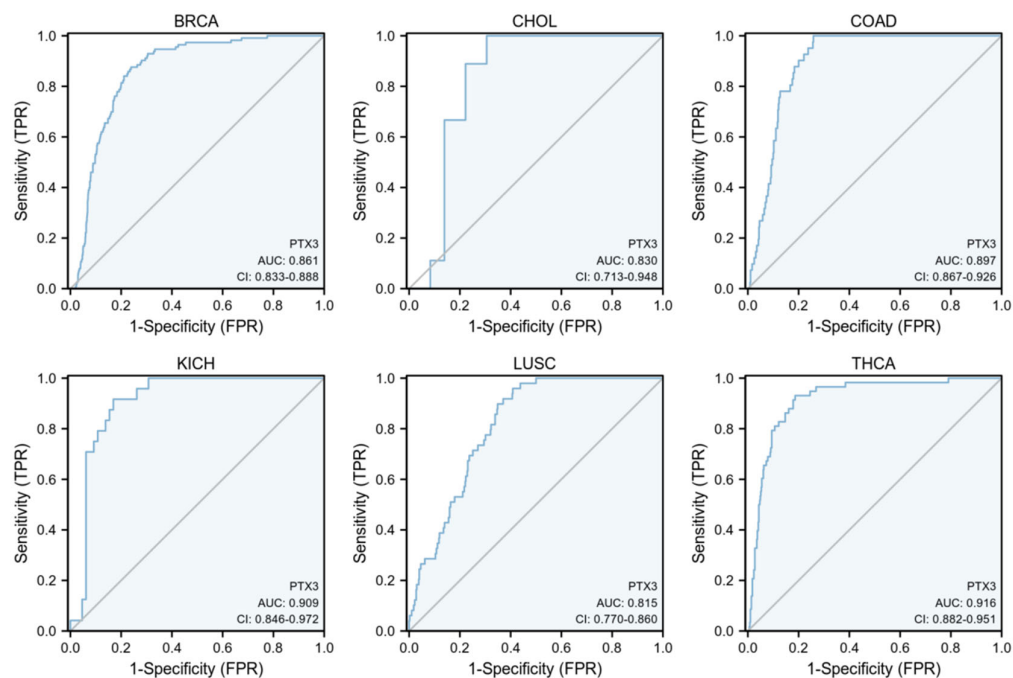
## 1. Supplementary Tables

### 1.1. Supplemental Table S1. Main reagents and consumable used in this article.

Reagents	Vendor	Catalogue Number	Information
Primer-PTX3	Tsingke Biotechnology	/	Forward: 5'-AGGCTTGAGTCTTTTAGTGCC-3' Reverse: 5'-ATGGATTCCTCTTTGTGCCATAG-3'
Primer-Actin	Tsingke Biotechnology	/	Forward: 5'- ATGACTTAGTTGCGTTACACC -3' Reverse: 5'- GACTTCCTGTAACAACGCATC -3
siRNA-PTX3	HIPPOBIO	202205050057	<b>siRNA-NC</b> Sence: UUCUCCGAACGUGUCACGUTT Anti-Sence: ACGUGACACGUUCGGAGAATT <b>siRNA-PTX3</b> Sence: CCACAUGGAGGAGCUCAGUAUTT Anti-Sence: AUACUGAGCUCCUCCAUGUGGTT
Lipofectamine 3000	Invitrogen	PH0429	Carlsbad, CA, USA

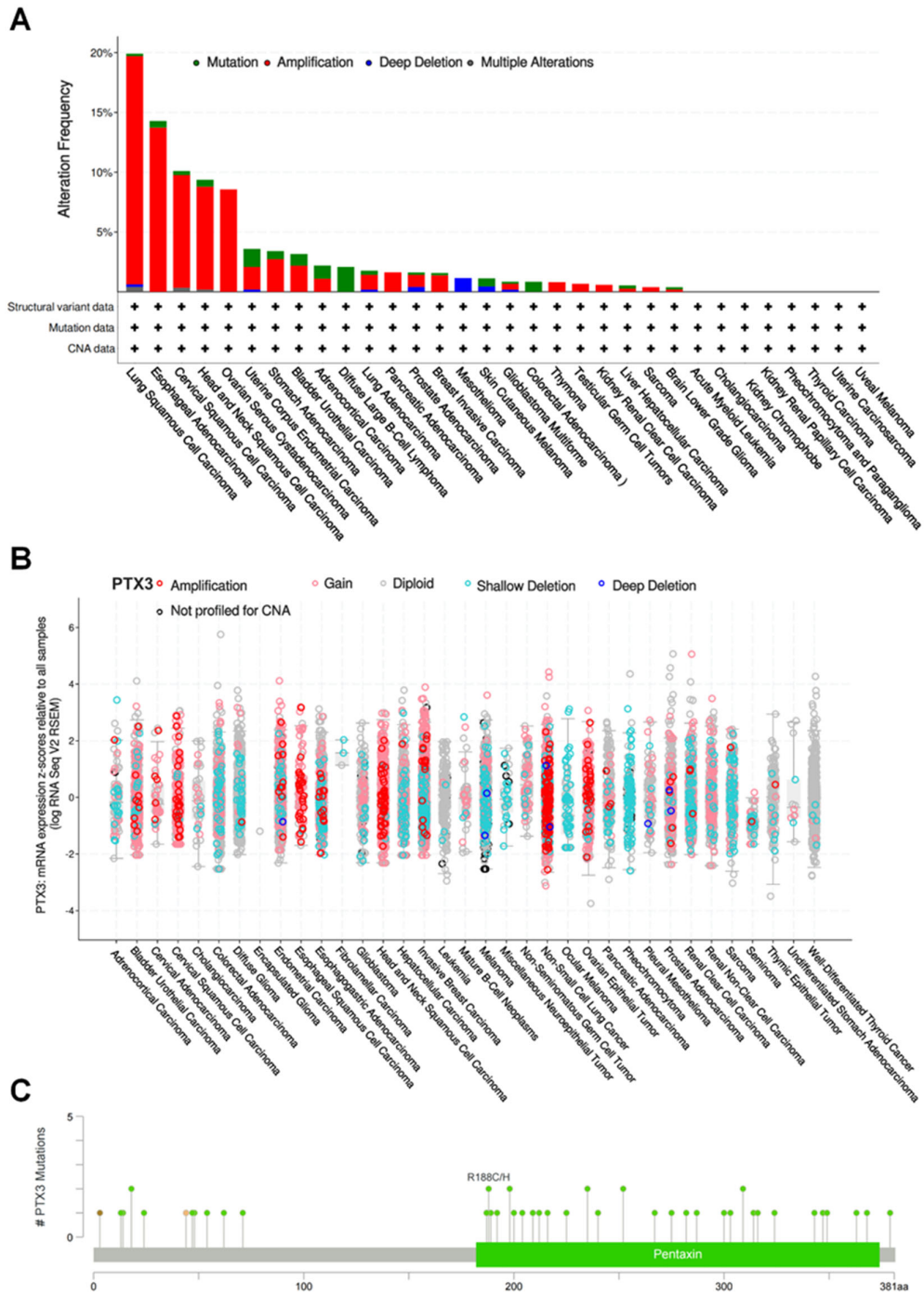
## 2. Supplementary Figures

### 2.1 Supplementary Figure S1



**Supplementary Figure S1** | The diagnosis prediction accuracy of PTX3 in pan-cancer by ROC analysis.

## 2.2 Supplementary Figure S2

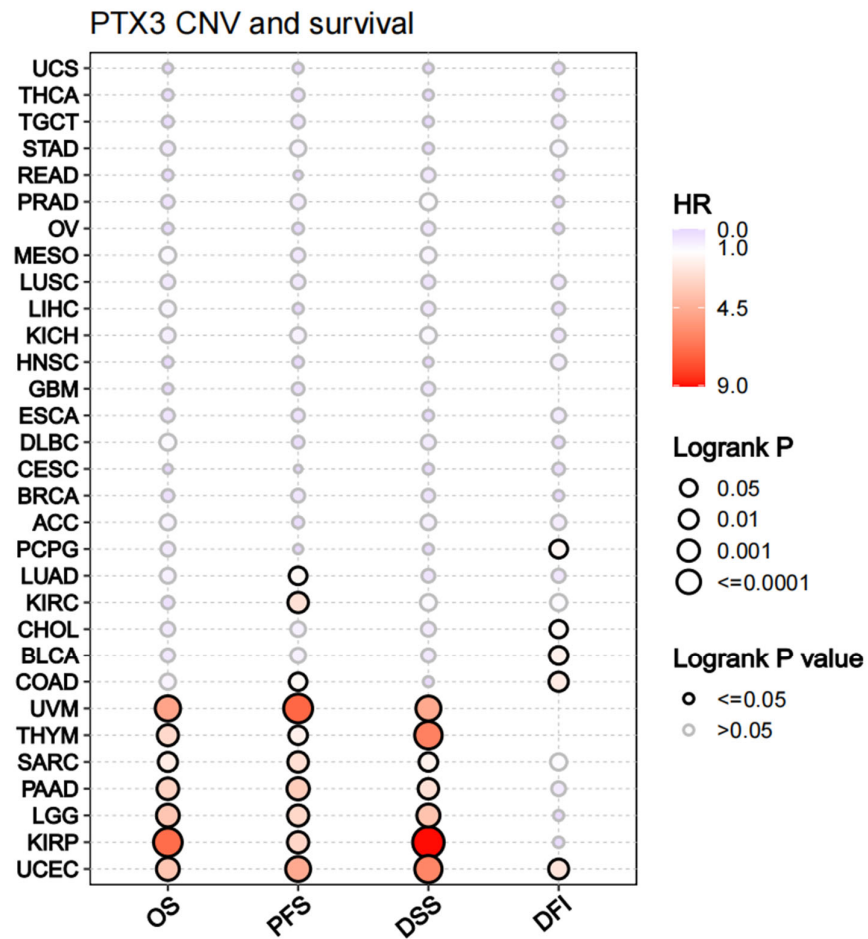


**Supplementary Figure S2 | Mutation of PTX3. (A)** PTX3 genetic alteration type and frequency in

pan-cancer. (B) The mutation counts and types of PTX3. (C) The general mutation sites and number of

PTX3.

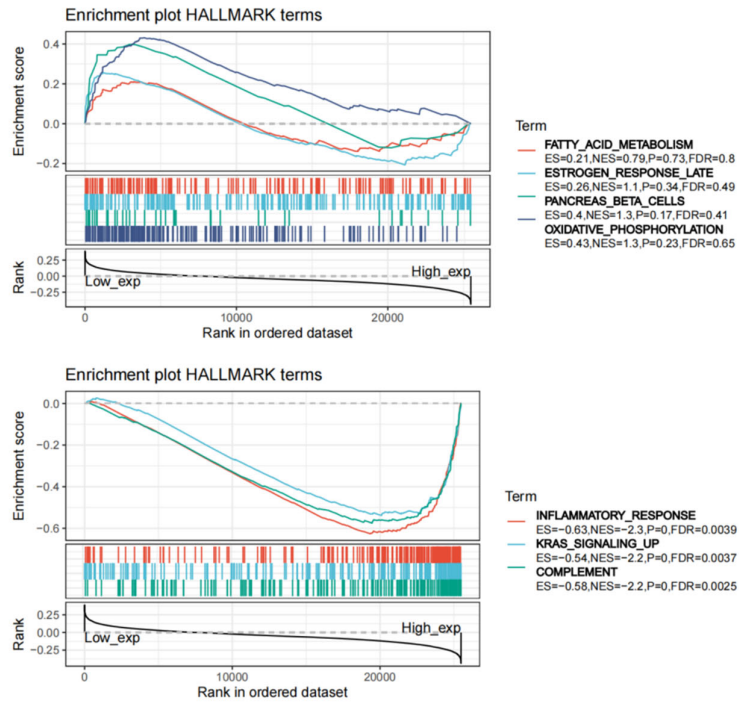
## 2.3 Supplementary Figure S3



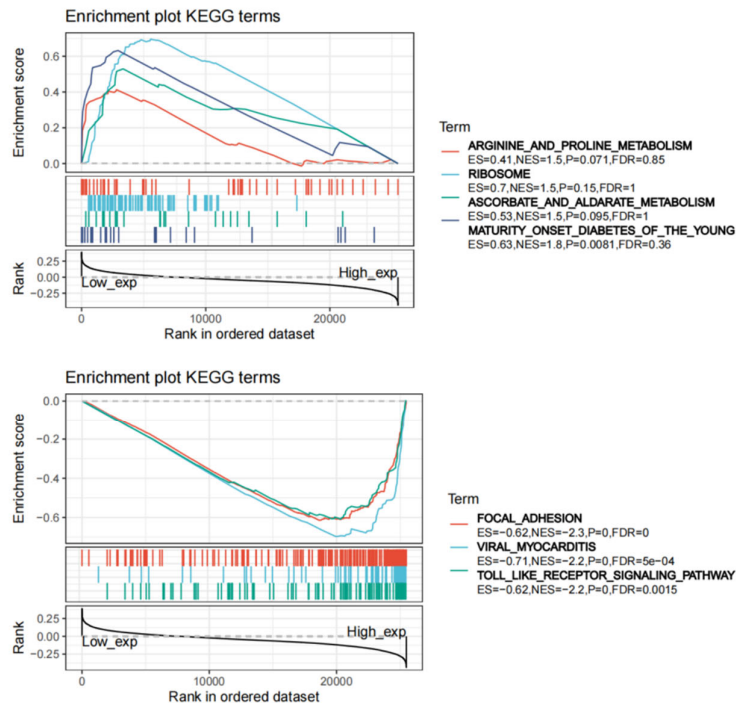
Supplementary Figure S3 | A summary of survival between PTX3 CNV and wide type.

## 2.4 Supplementary Figure S4

**A**



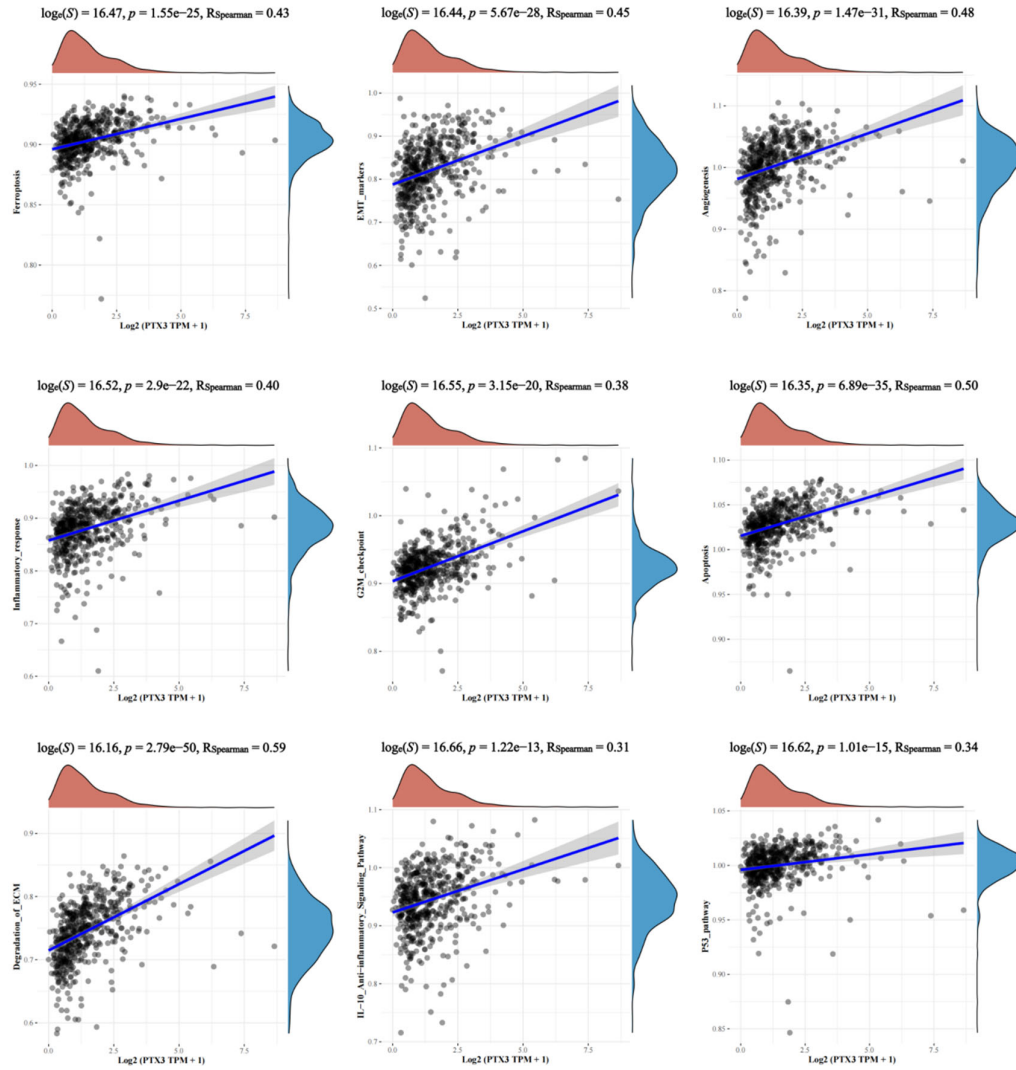
**B**



Supplementary Figure S4 | GSEA of PTX3 in pan-cancer. The pan-cancer functional HALLMARK

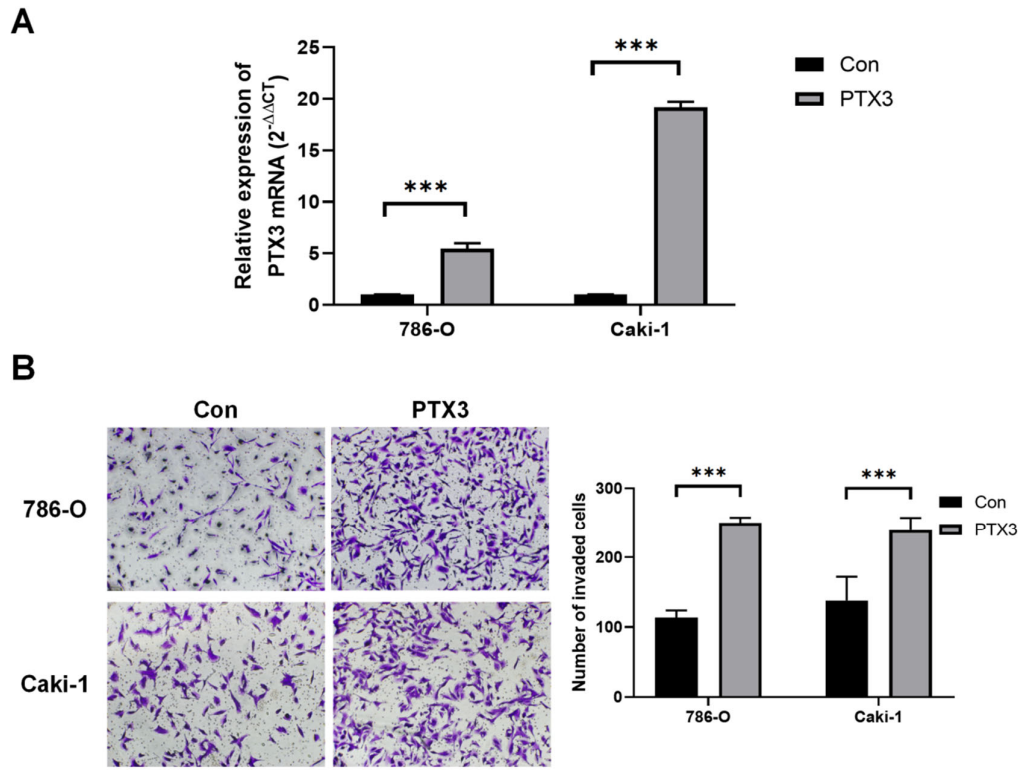
(a) and KEGG (b) terms of the PTX3.

## 2.5 Supplementary Figure S5



**Supplementary Figure S5** | Correlation of PTX3 with tumor signaling pathways in KIRC.

## 2.6 Supplementary Figure S6



**Supplementary Figure S6 | PTX3 function in KIRC.** (A) The transfected efficiency of PTX3 expression plasmid and negative control was evaluated by qRT-PCR. (B) PTX3 overexpression could induce KIRC cell migration and invasion. (Data are shown as the mean  $\pm$  SD of three replicates. \*  $P < 0.05$ ; \*\*  $P < 0.01$ ; \*\*\*  $P < 0.001$  by ANOVA test).