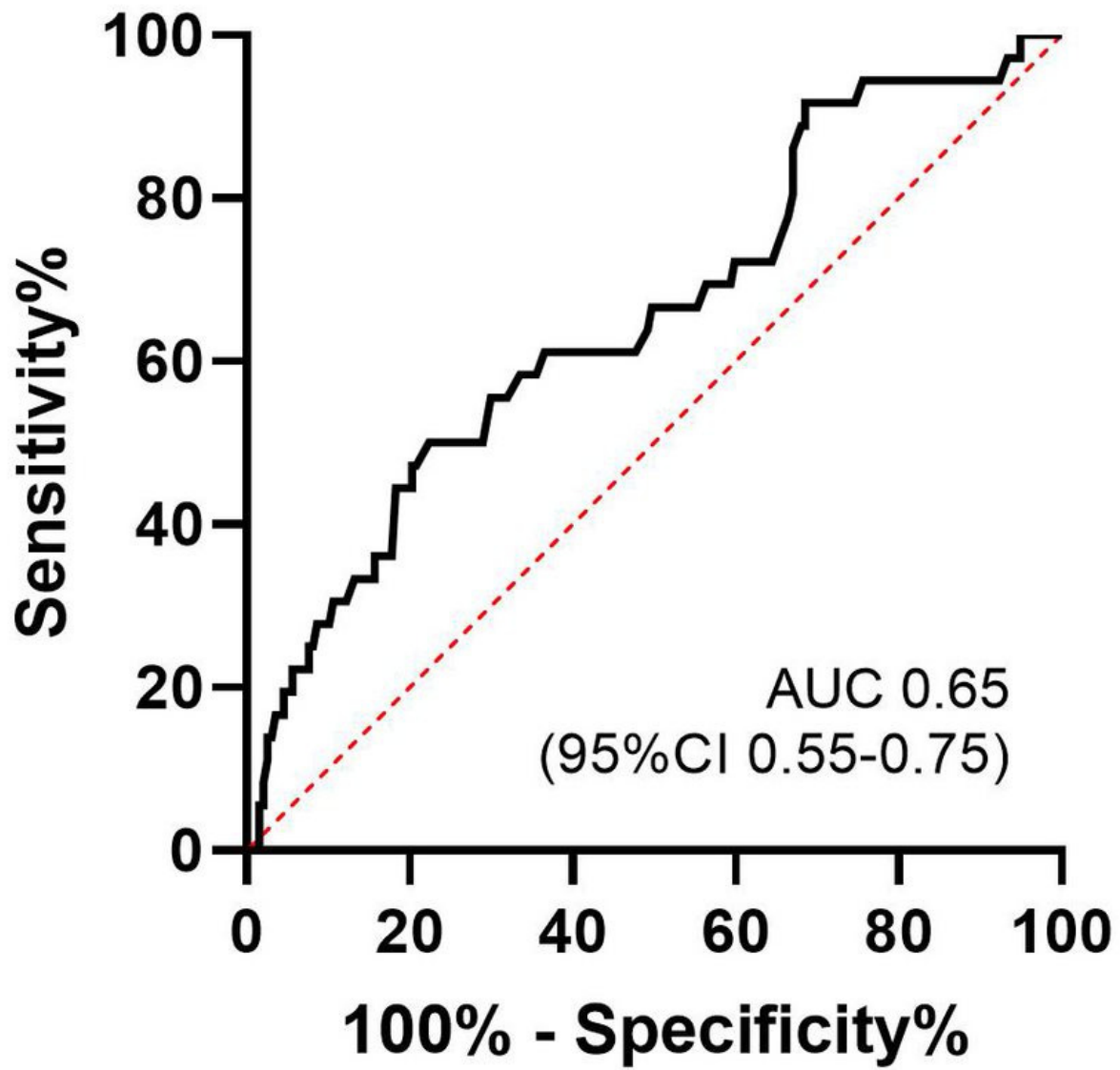
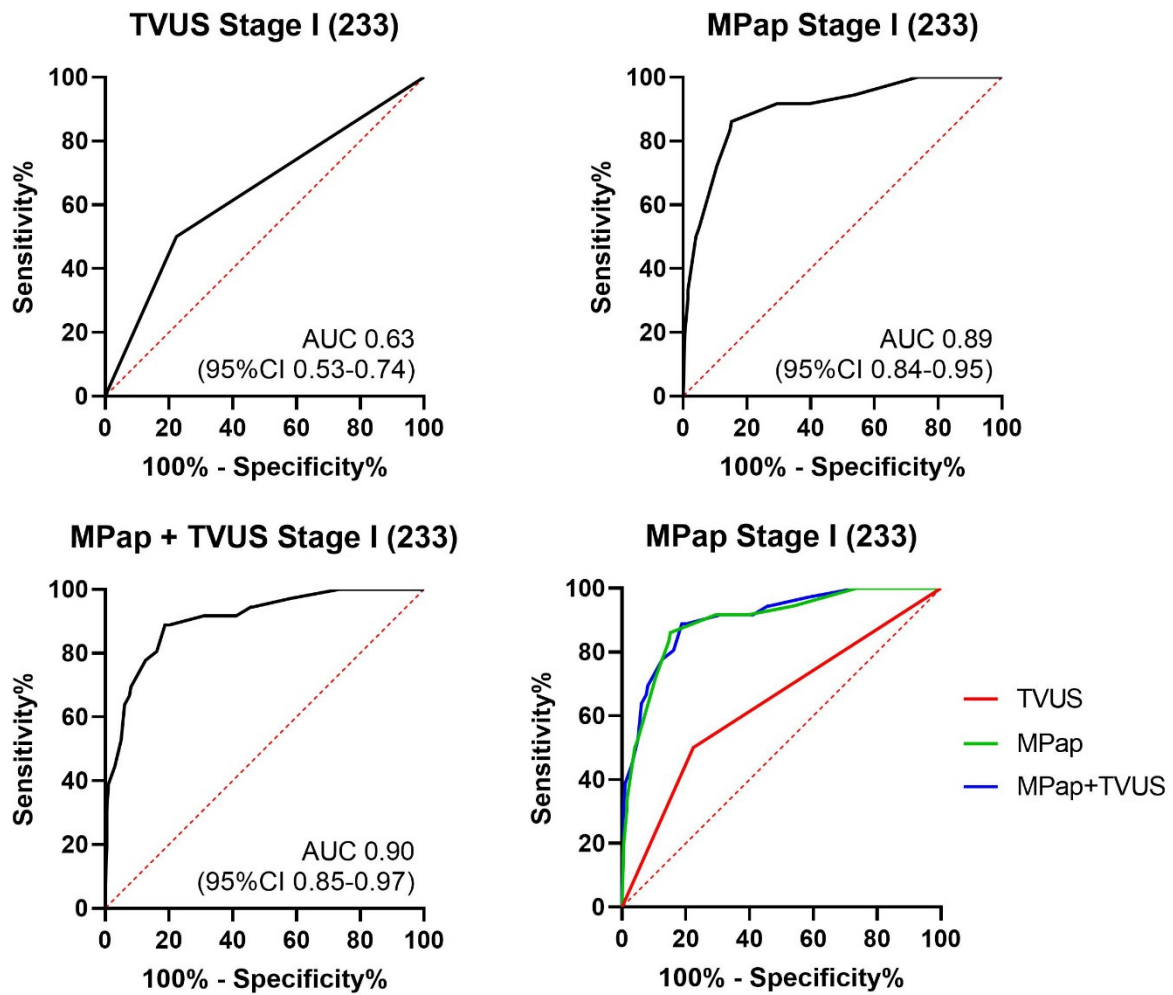


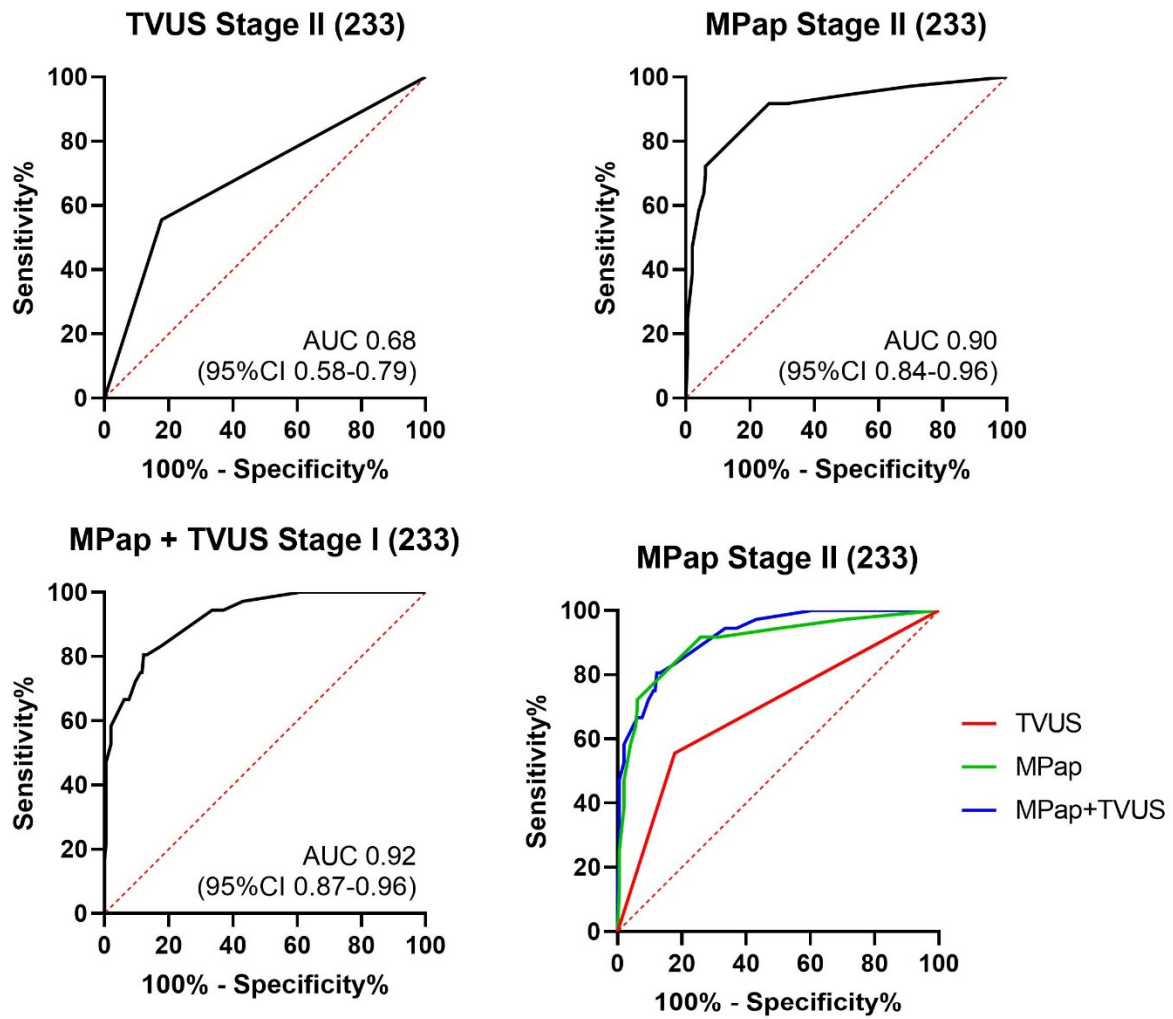
SUPPLEMENTAL INFORMATION



**Figure S1.** The AUC for different ET thicknesses in detection of EC.



**Figure S2.** The complement of MPap assay with or without TVUS in stage 1.



**Figure S3.** The complement of MPap assay with or without TVUS in stage 2.

**Table S1.** Classification of endometrial pathology.

<i>Normal physiological change (Normal)</i>	Proliferative phase of the endometrium Secretory phase of the endometrium Menstrual phase of the endometrium Atrophic postmenopausal endometrium
<i>Benign endometrial lesions (Benign)</i>	Endometrial metaplasia Specific or nonspecific endometritis Endometrial polyp Submucosal leiomyoma Disordered proliferative endometrium
<i>Precancerous change (Hyperplasia)</i>	Endometrial hyperplasia Atypical endometrial hyperplasia Endometrial intraepithelial neoplasia
<i>Endometrial cancer (EC)</i>	Endometrioid adenocarcinoma Carcinosarcoma Clear cell adenocarcinoma Mixed carcinoma Serous adenocarcinoma Undifferentiated carcinoma Others

**Table S2.** Characteristics of EC.

<i>Characteristics</i>		<i>Stage 1*</i>	<i>Stage 2*</i>	<i>P value</i>
		<i>n=42</i>	<i>n=39</i>	
<i>Cancer Type</i>	<i>I</i>	37 (88)	33 (85)	0.6480
	<i>II</i>	5 (12)	6 (15)	
<i>Cancer Stage</i>	<i>I</i>	29 (69)	29 (74)	0.3210
	<i>II</i>	4 (10)	1 (3)	
	<i>III</i>	7 (17)	7 (18)	
	<i>IV</i>	2 (5)	2 (5)	
<i>Cancer Grade</i>	<i>1</i>	16 (38)	17 (44)	0.8110
	<i>2</i>	18 (43)	14 (36)	
	<i>3</i>	8 (19)	8 (21)	

\* Data are shown as n (%) unless otherwise indicated.

**Table S3.** MPap values of the participants.

<i>Cohort</i>		<i>Normal</i>	<i>Benign</i>	<i>Precancerous</i>	<i>EC</i>	<i>P Value</i>
<i>Stage 1</i>	<i>n</i>	138	45	24	42	
	<i>MPap value*</i>	-3.3(1.6)	-3.1(1.7)	-2.9(1.8)	0.2(1.8)	<0.0001
<i>Stage 2</i>	<i>n</i>	86	83	37	39	
	<i>MPap value*</i>	-3.4(1.4)	-3.5(1.5)	-3.7(1.5)	-0.5(1.9)	<0.0001

\* Data are shown as Mean (Standard Deviation).

**Table S4.** Comparison of different thresholds of the MPap value for EC detection.

<i>MPap value</i>	<i>Stage 1*</i>	<i>Stage 2*</i>
<i>AUC</i>	0.91 (0.87-0.94)	0.90 (0.84-0.95)
<i>Sen</i>	92.9 (80.5-98.5)	92.5 (82.9-100.0)
<i>Spe</i>	71.5 (64.8-77.5)	73.8 (67.6-79.4)
<i>PPV</i>	39.8 (34.4-45.5)	40.2 (30.8-50.5)
<i>NPV</i>	98.0 (94.3-99.3)	98.1 (95.8-100.0)

\* Data % are within the 95% CIs unless otherwise indicated.

The cutoff threshold of the MPap value is -2.10.

Sen: sensitivity; Spe: specificity; PPV: positive predictive value; NPV: negative predictive value.

**Table S5.** MPap performance in centers from northern, central, and southern Taiwan.

<i>Centers</i>	<i>Subtotal</i>	<i>EC (n)</i>	<i>Non-EC</i>	<i>Sen (%)</i>	<i>Spe (%)</i>	<i>P Value</i>
	<i>(n)</i>		<i>(n)</i>			
<i>Northern</i>	236	33	203	90.9	73.4	0.39
<i>Central</i>	103	6	97	83.3	70.1	
<i>Southern</i>	152	42	110	95.2	72.7	

EC, endometrial cancer; Sen: sensitivity; Spe: specificity.



**Table S6.** Performance of the MPap test for the detection of different histological types of EC.

<i>Histological type</i>	<i>Stage 1 MPap high risk*</i>	<i>Stage 2 MPap high risk*</i>
<i>Endometrioid adenocarcinoma</i>	35/37 (95%)	30/33 (91%)
<i>Carcinosarcoma</i>	1/2 (50%)	3/3 (100%)
<i>Clear cell adenocarcinoma</i>	1/1 (100%)	0
<i>Desmoplastic small round cell tumor</i>	0	1/1 (100%)
<i>Mixed carcinoma</i>	2/2 (100%)	0
<i>Serous adenocarcinoma</i>	0	1/1 (100%)
<i>Undifferentiated carcinoma</i>	0	1/1 (100%)

\*Data are shown as n or n (%) of the EC cases.

**Table S7.** The frequency of diagnosing EC among IVPs from the Taiwan Cancer

Registry Database.

<i>Age</i>		<i>NHI data</i>	<i>MPap value</i>	
		<i>n</i>	<i>High risk</i>	<i>Low risk</i>
<b>50 years+</b>	<i>IVPs</i>	17752	5393	12359
	<i>EC</i>	1119	1035	84
	<i>NonEC</i>	16633	4358	12275
	<i>IVPs/per EC</i>	15.9	5.2	
	<i>Triage IVPs (%)</i>			69.1
<b>40-50 years</b>	<i>IVPs</i>	20951	5650	15301
	<i>EC</i>	242	224	18
	<i>NonEC</i>	20709	5426	15283
	<i>IVPs/per EC</i>	86.6	25.2	
	<i>Triage IVPs (%)</i>			72.9

NHI: Taiwan's National Health Insurance; IVPs: invasive procedures; EC: endometrial cancer.