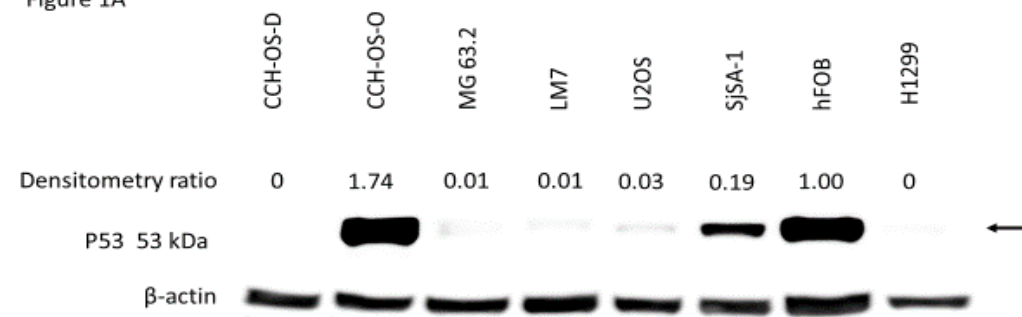


Figure 1A



50KD →

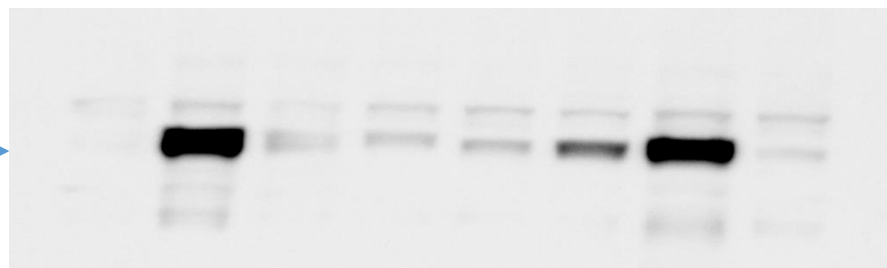


Figure 1B

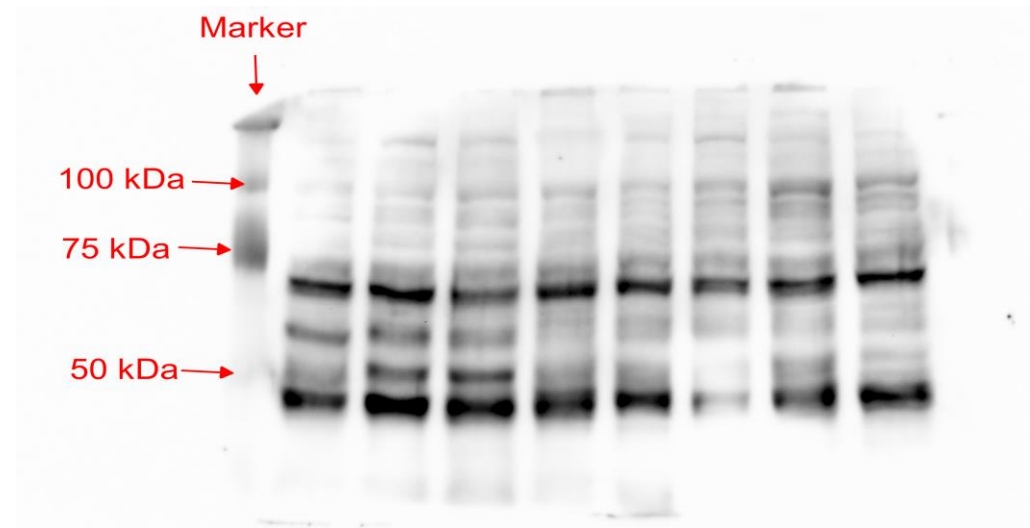
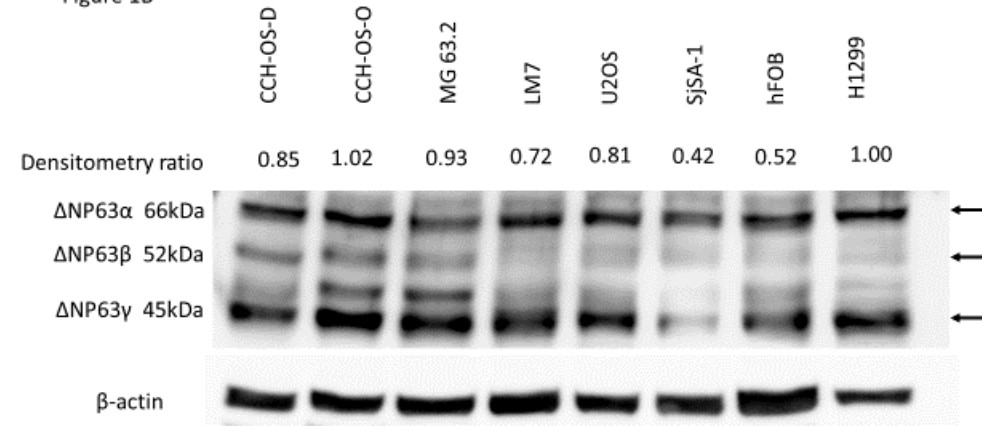


Figure 1C

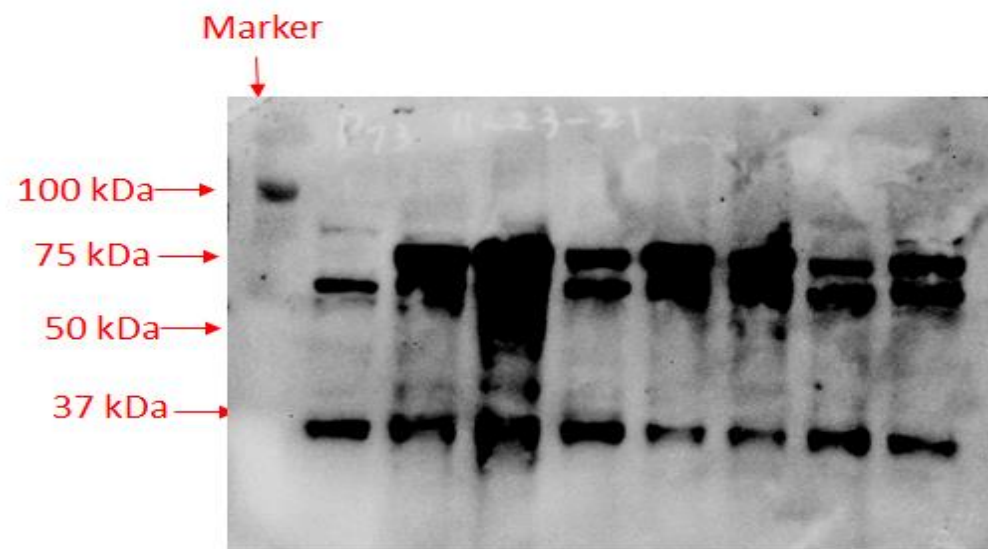
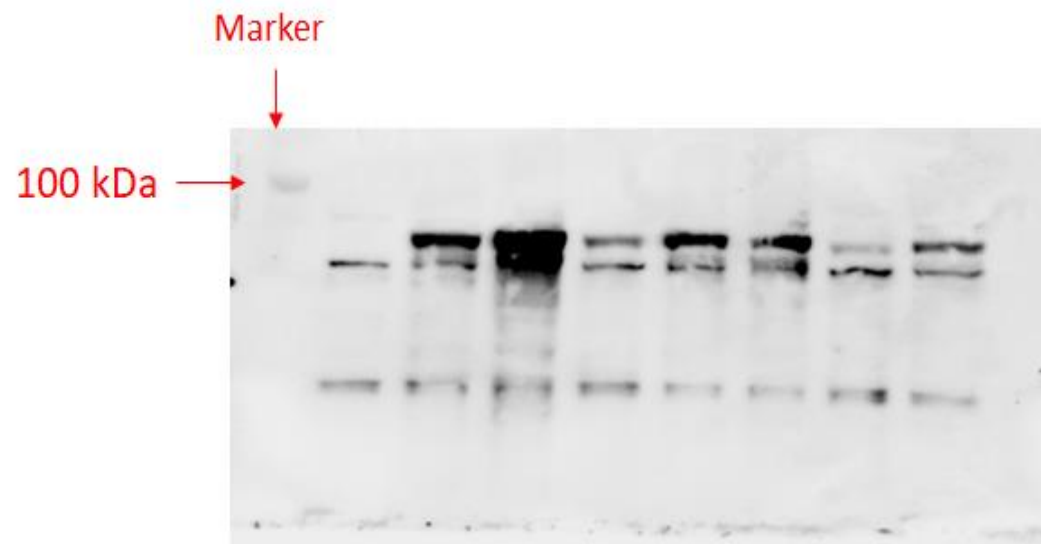
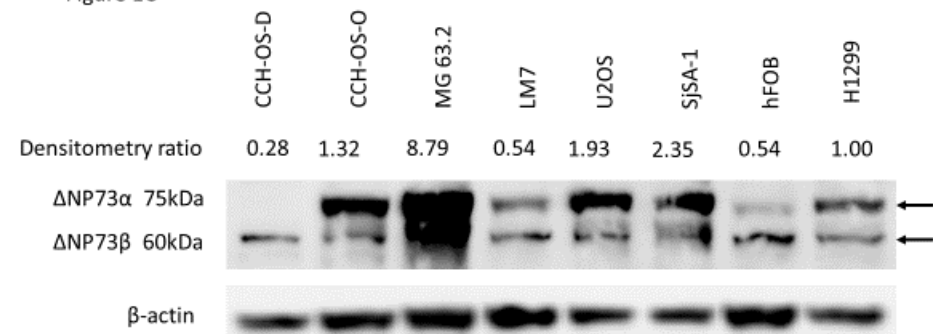
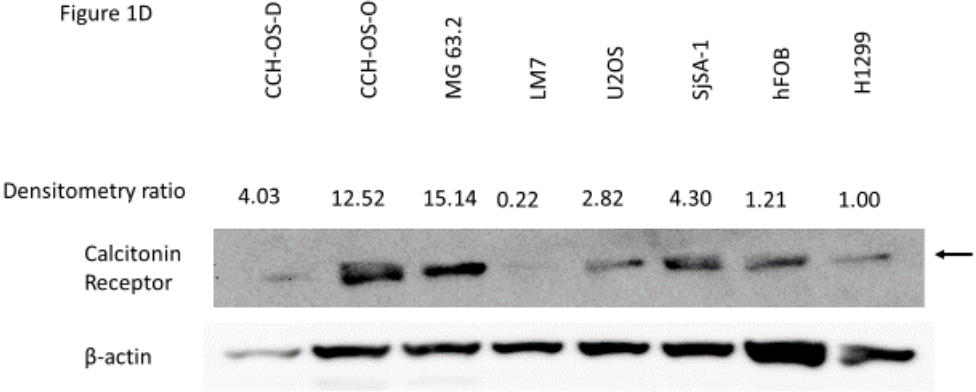
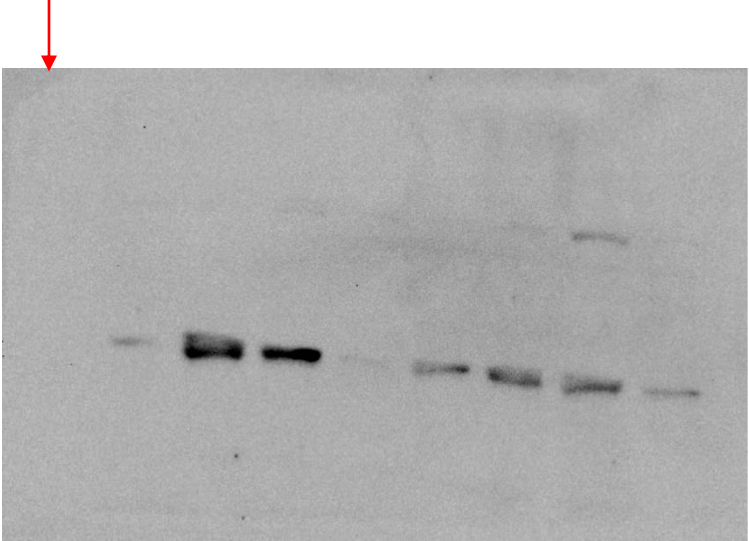


Figure 1D



Marker



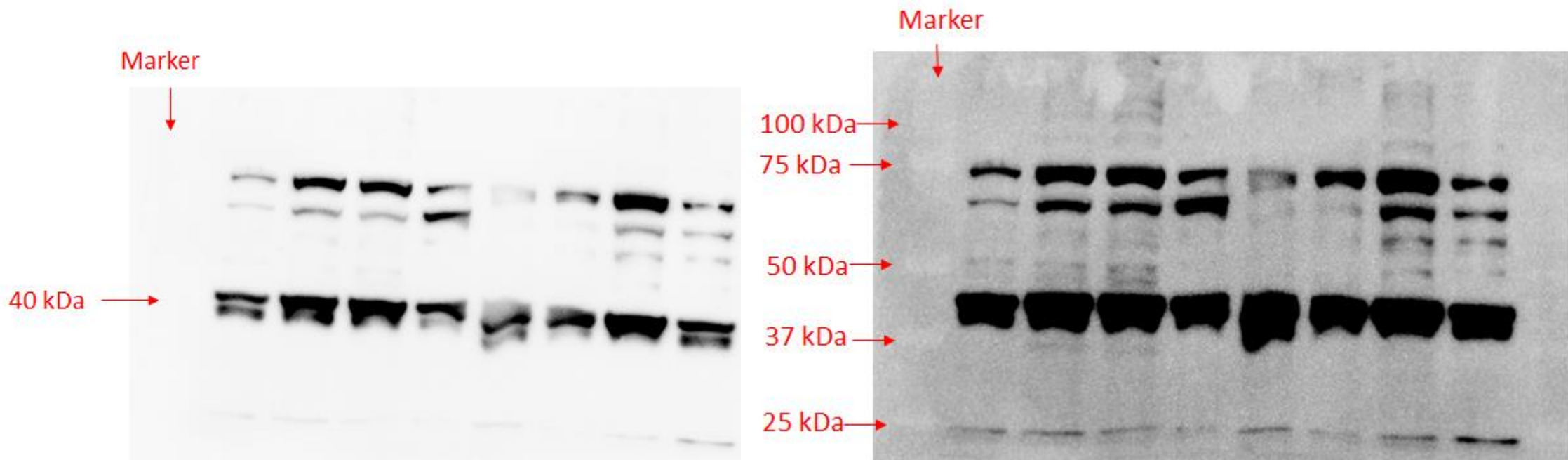
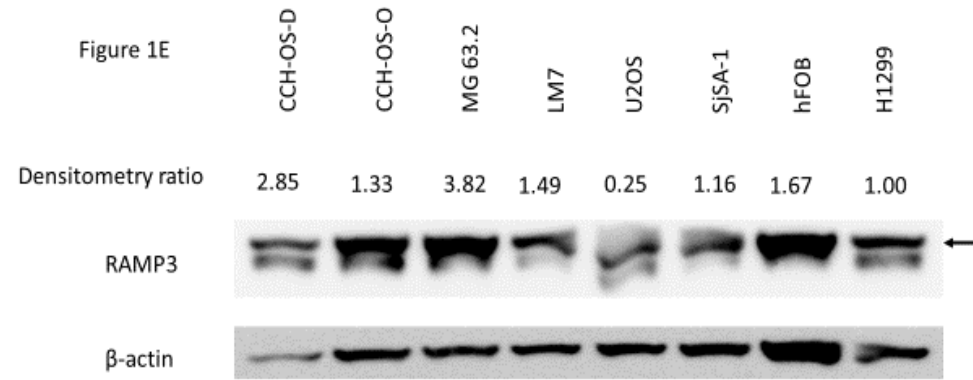


Figure 1F

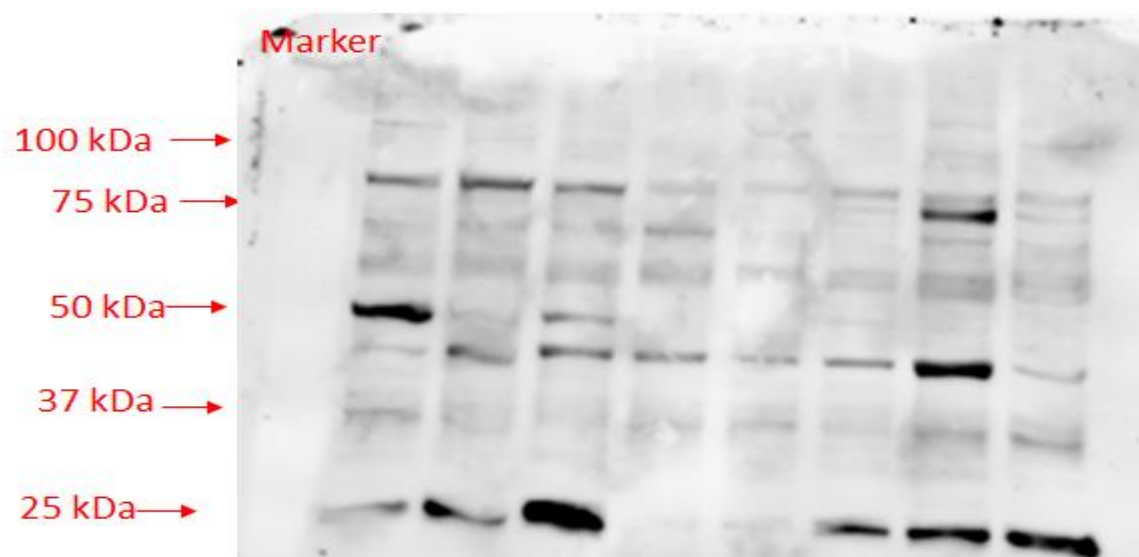
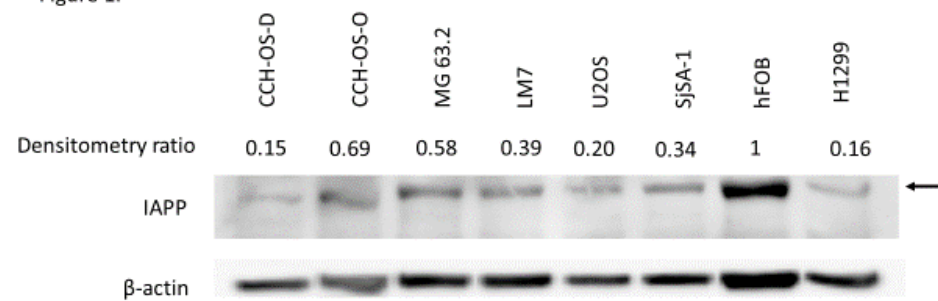


Figure 4A

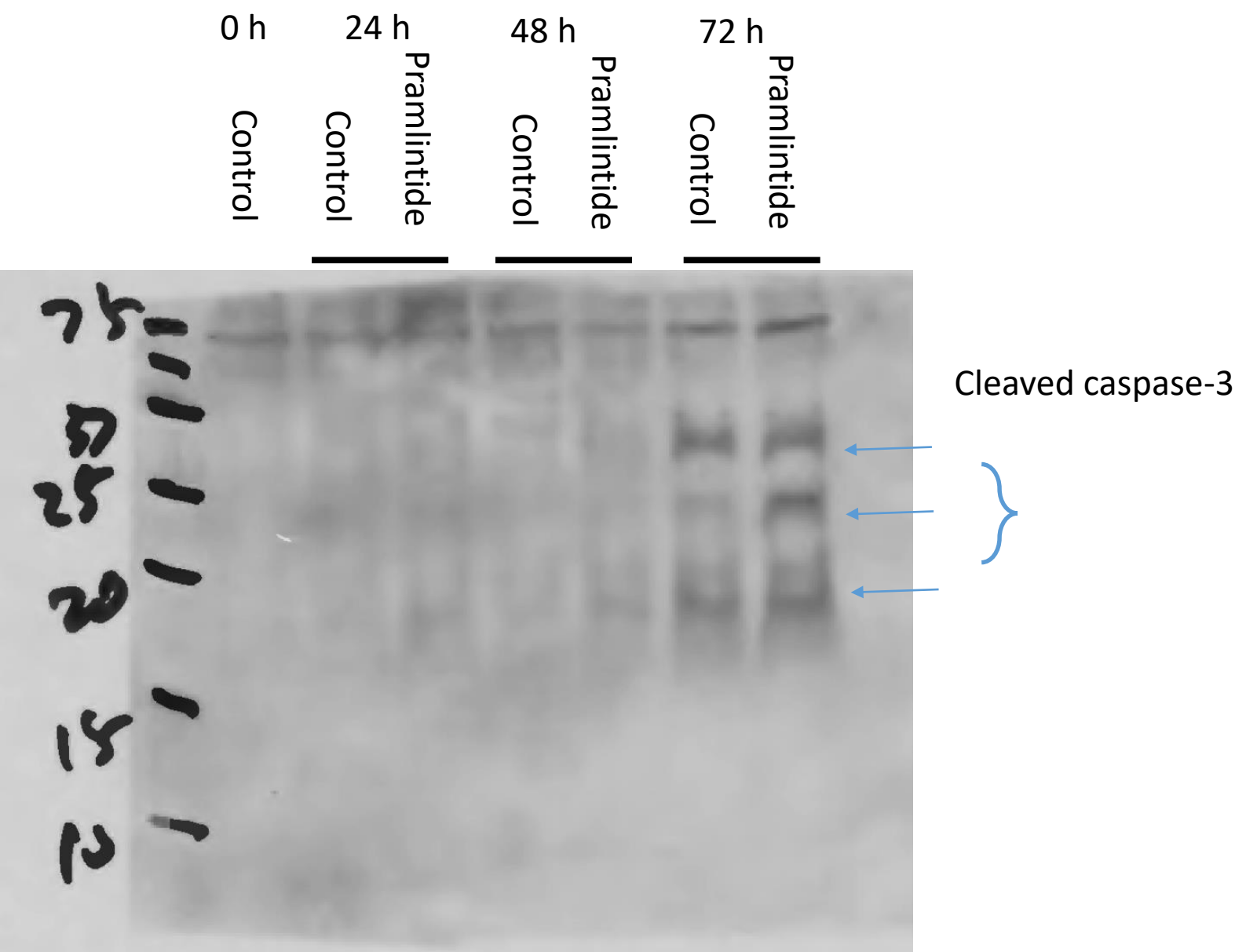
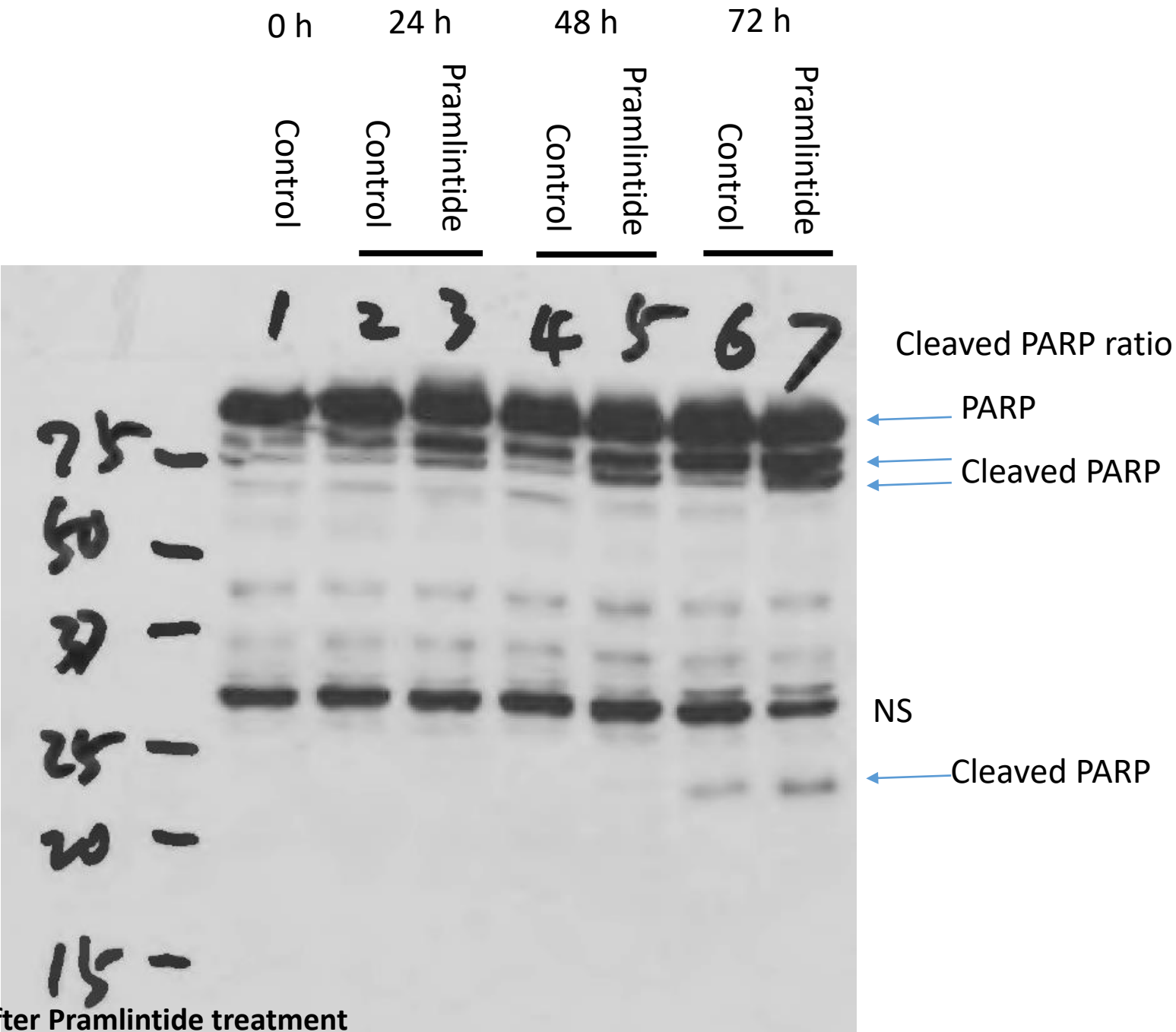


Figure 4B



Increased Cleaved PARP in CCH-OSD after Pramlintide treatment



Figure 4C, D, E

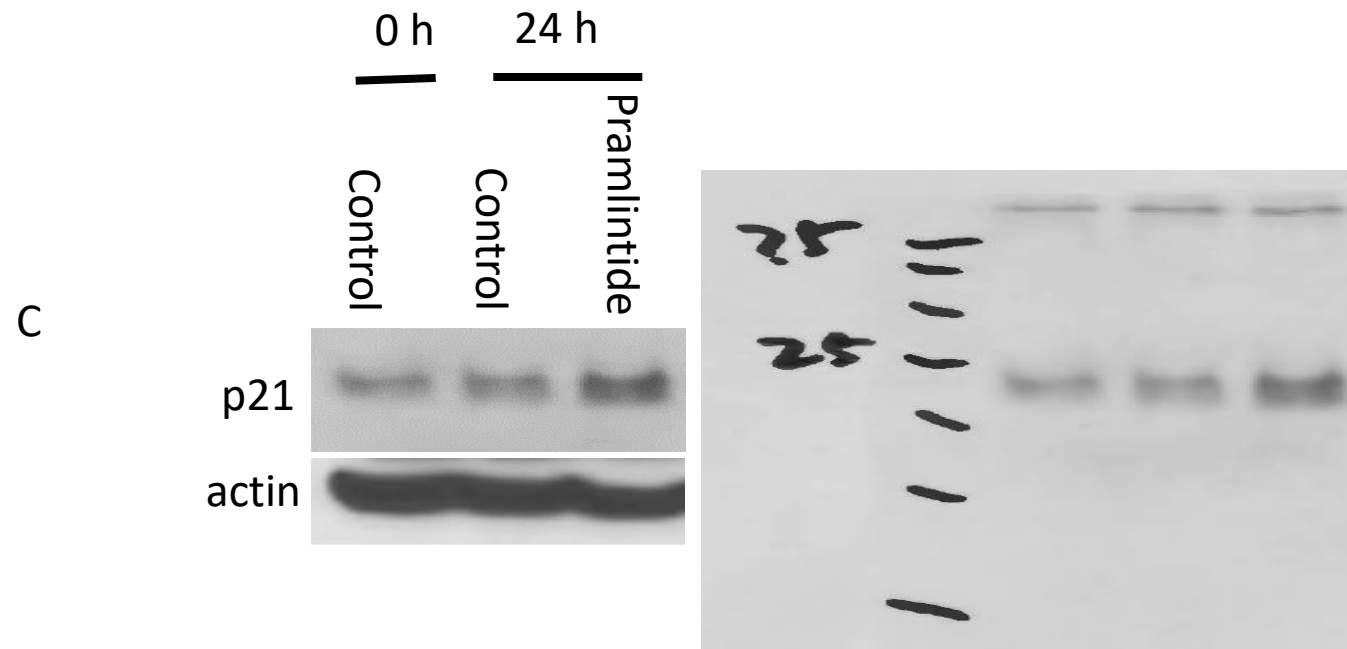


Figure 4C, D, E Increased p21, p27 but not cyclin D3 in CCH-OSD after Pramlintide treatment

Figure 4C, D, E

D

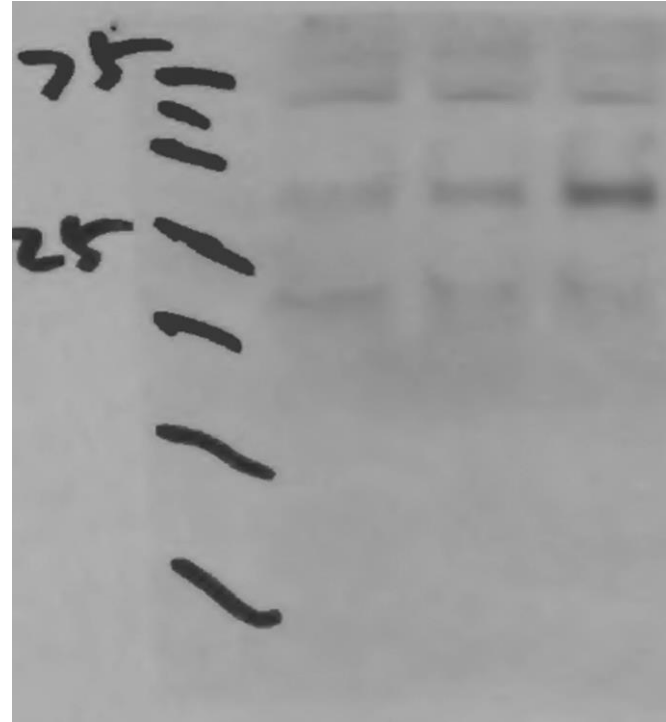
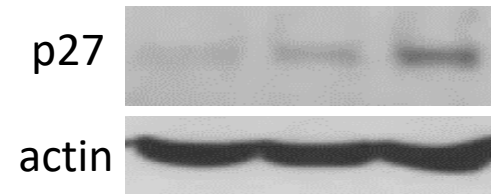
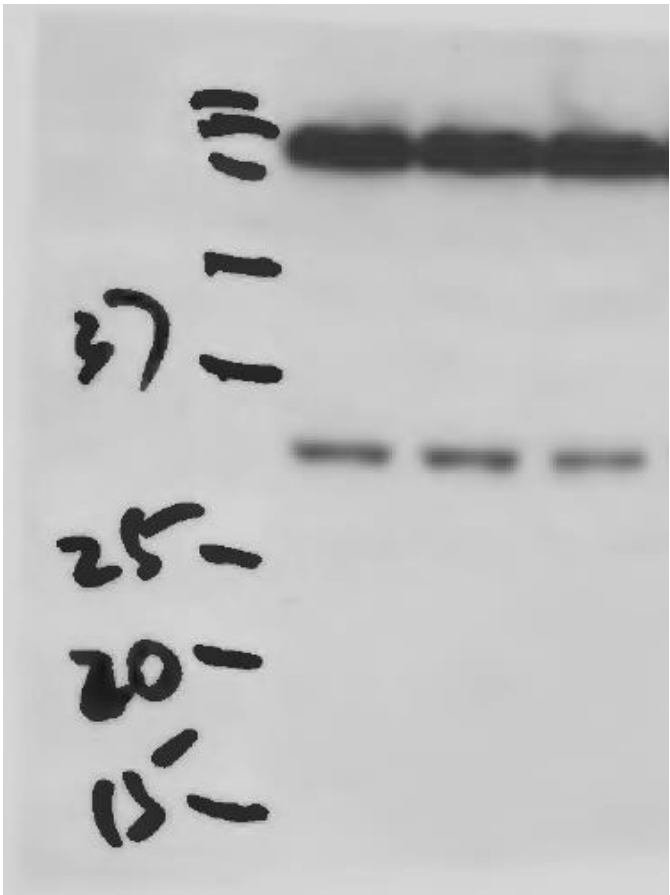
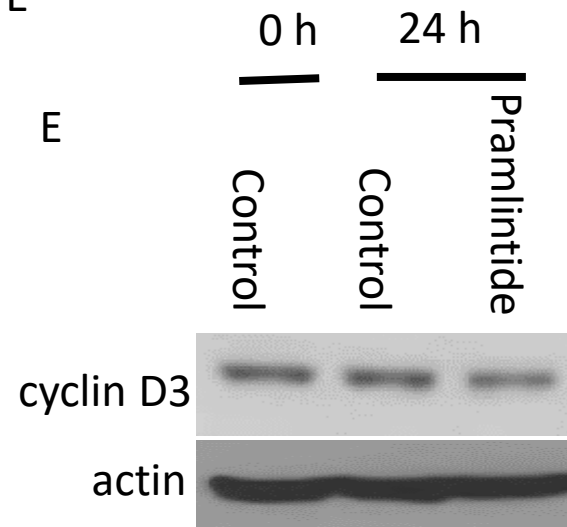


Figure 4C, D, E Increased p21, p27 but not cyclin D3 in CCH-OSD after Pramlintide treatment

Figure 4C, D, E



Pramlintide 20ug/ml

Figure 4C, D, E Increased p21, p27 but not cyclin D3 in CCH-OSD after Pramlintide treatment