

Supplementary Figures

Supplementary Figure S1.

Figure 4g. GALNT14 protein expression in 7 OSCC cell lines.

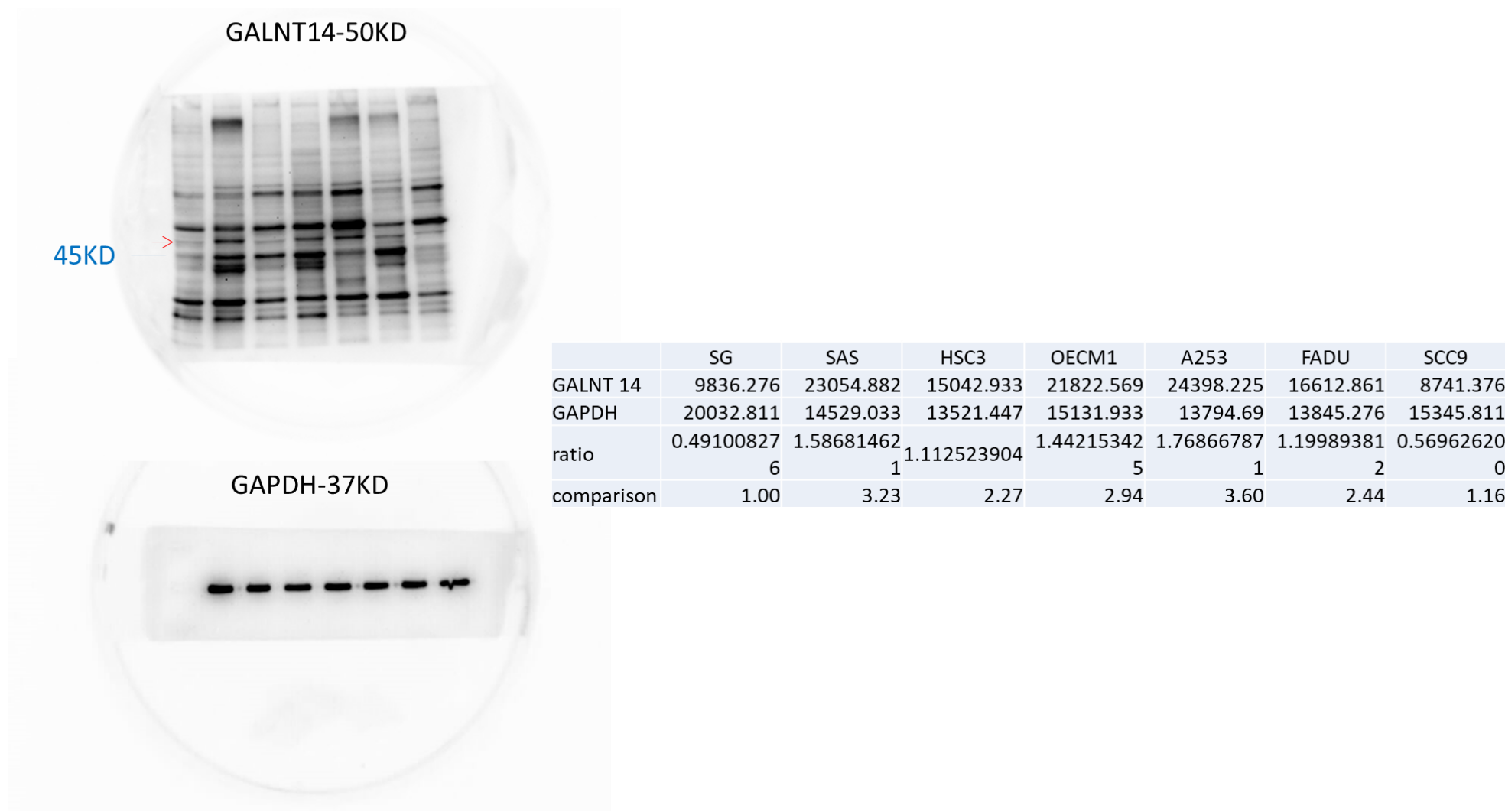


Figure 4h. GALNT14 protein expression after treatment with vehicle, 12.5 or 100 µg/mL arecoline for 24 h in SG.

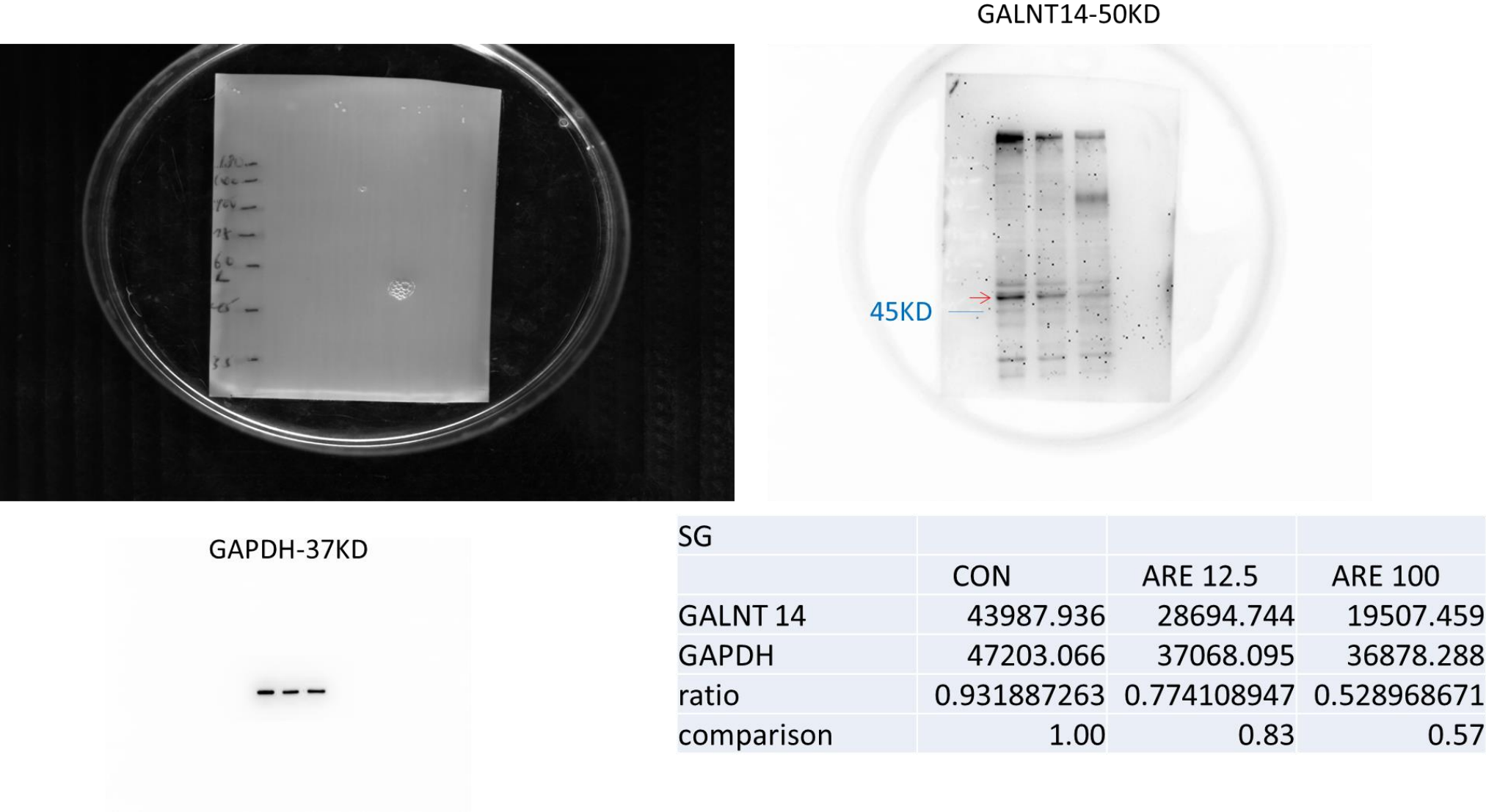


Figure 4i. GALNT14 protein expression after treatment with vehicle, 12.5 or 100 µg/mL arecoline for 24 h in SAS.

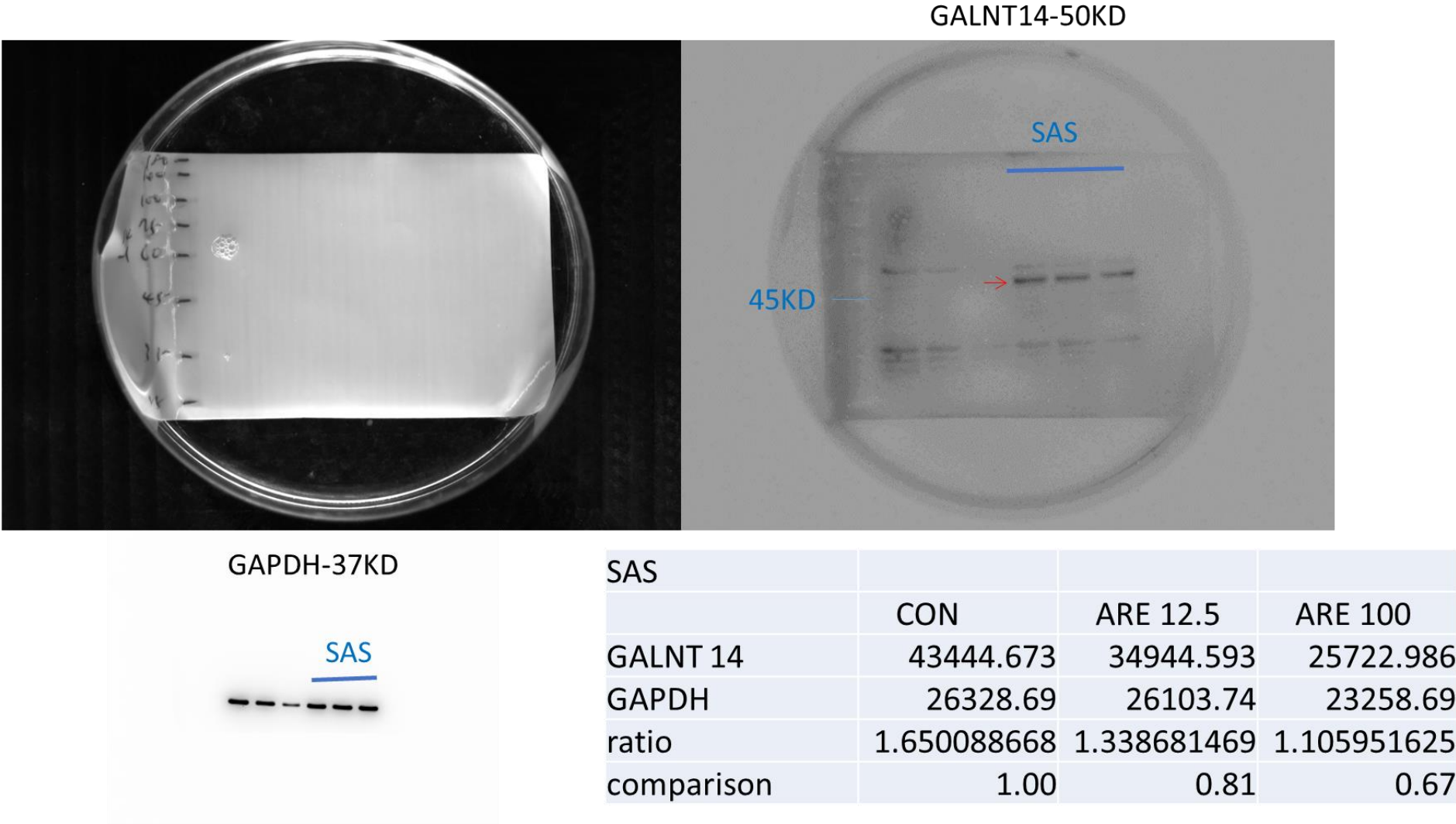
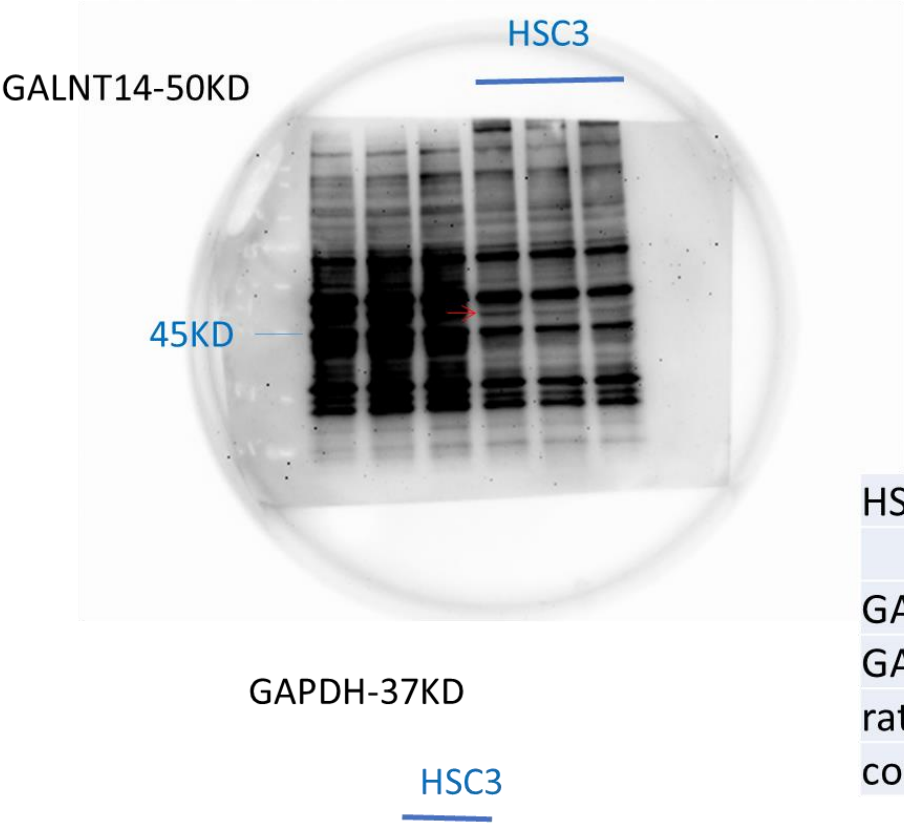
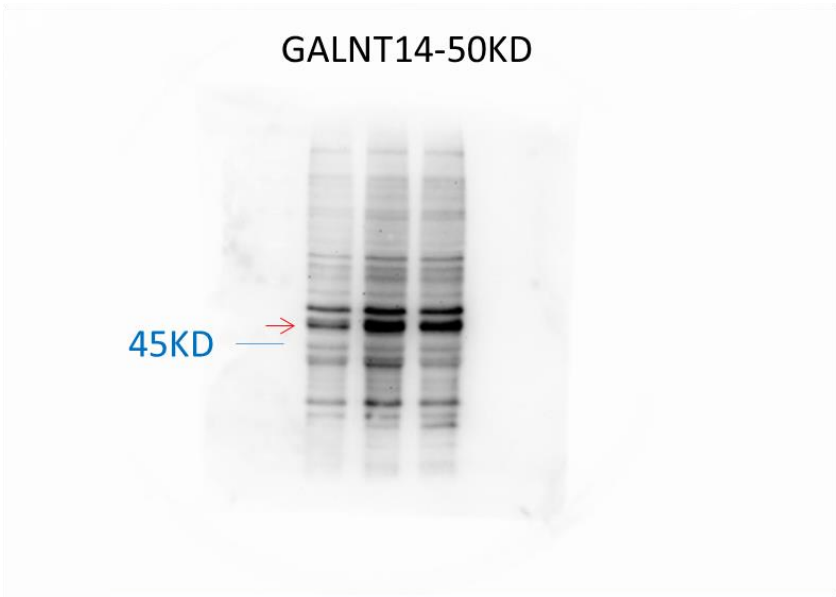
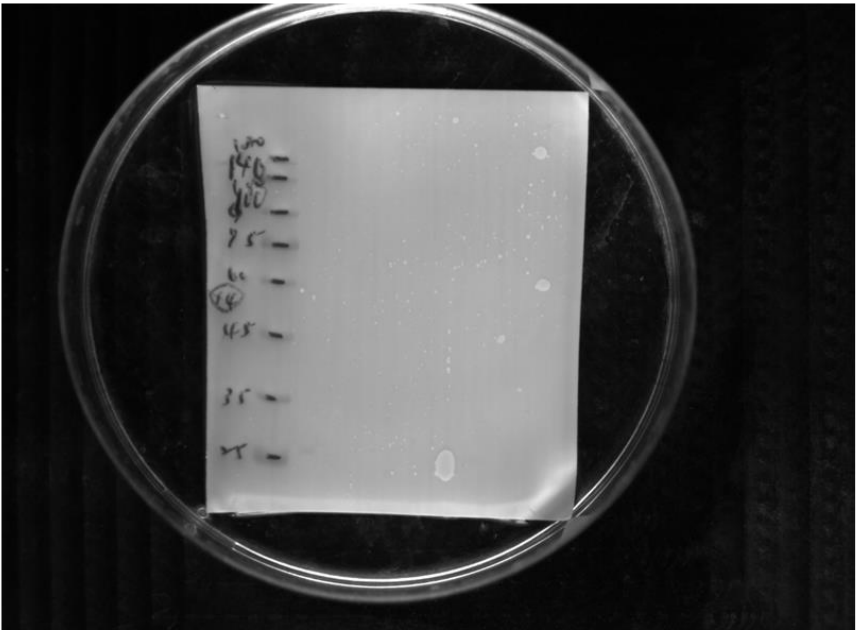


Figure 4j. GALNT14 protein expression after treatment with vehicle, 12.5 or 100 µg/mL arecoline for 24 h in HSC3.



HSC3			
	CON	ARE 12.5	ARE 100
GALNT 14	51283.045	34344.238	30025.459
GAPDH	44606.087	39955.329	39128.865
ratio	1.149687149	0.859565892	0.767348069
comparison	1.00	0.75	0.67

Figure 4k. GALNT14 protein expression after treatment with vehicle, 12.5 or 100 $\mu\text{g/mL}$ arecoline for 24 h in OECM-1.



OECM-1			
	CON	ARE 12.5	ARE 100
GALNT 14	25937.116	53566.217	47624.338
GAPDH	31793.388	43786.238	38974.409
ratio	0.815802204	1.223357371	1.221938683
comparison	1.00	1.50	1.50

Figure 4I. GALNT14 protein expression after treatment with vehicle, 12.5 or 100 µg/mL arecoline for 24 h in A253.

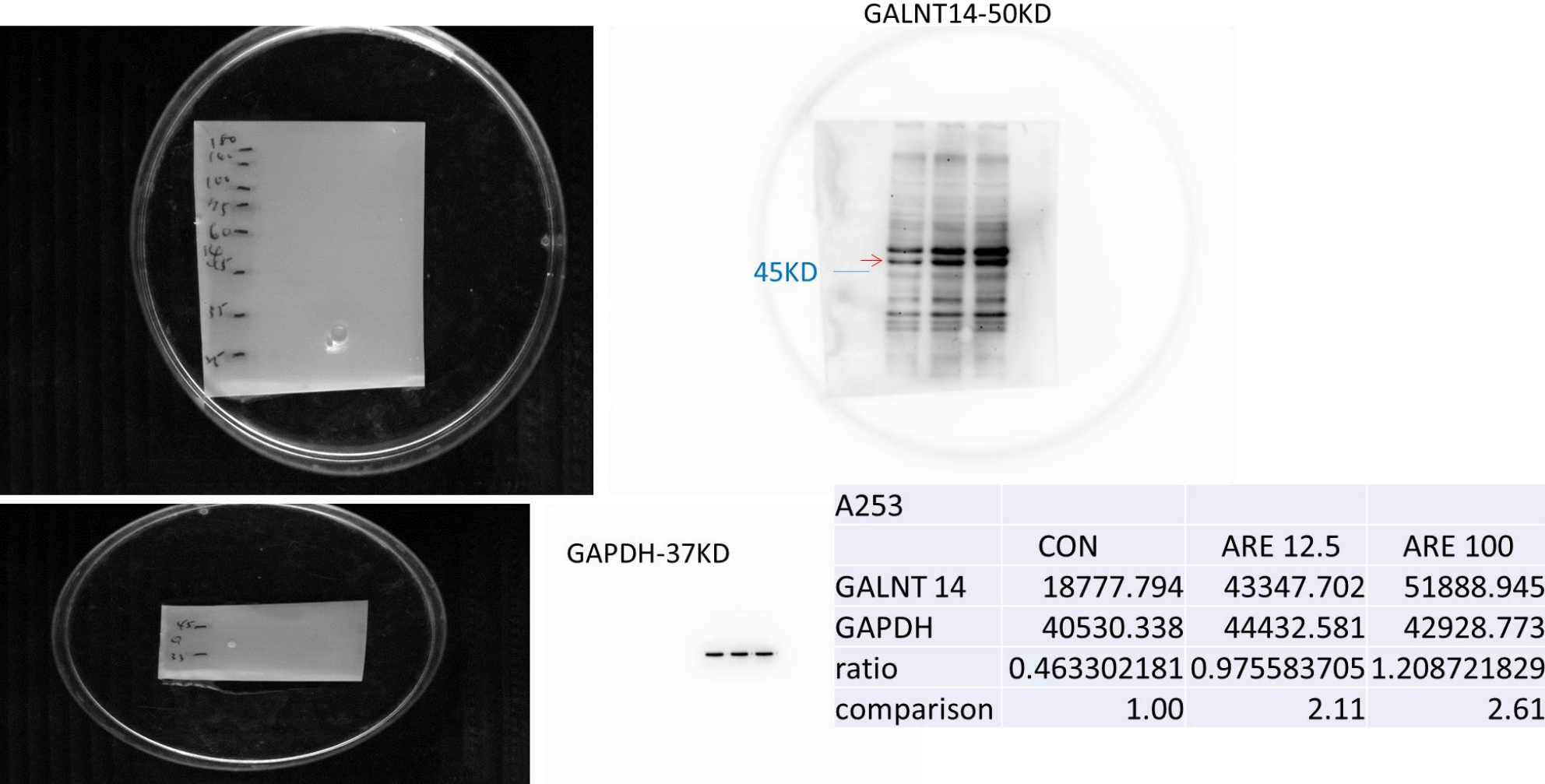
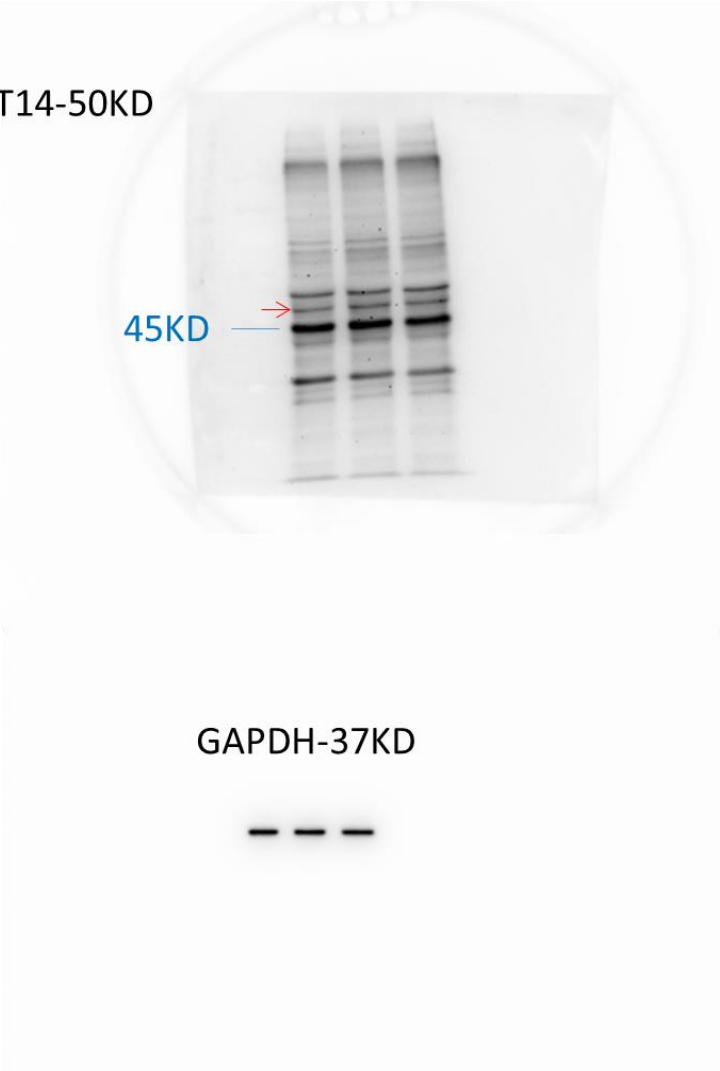
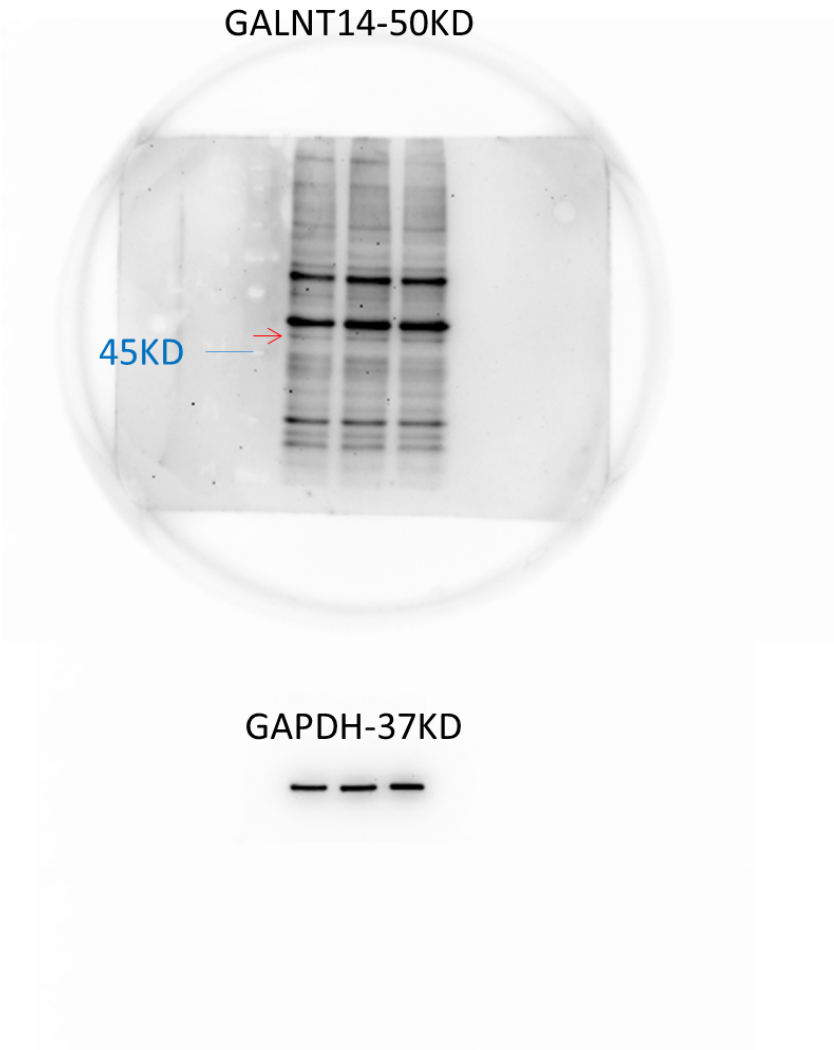


Figure 4m. GALNT14 protein expression after treatment with vehicle, 12.5 or 100 µg/mL arecoline for 24 h in FaDu.



FADU			
	CON	ARE 12.5	ARE 100
GALNT 14	36059.681	46394.451	43711.167
GAPDH	39124.459	43089.409	40708.167
ratio	0.921665933	1.076701957	1.073768981
comparison	1.00	1.17	1.17

Figure 4n. GALNT14 protein expression after treatment with vehicle, 12.5 or 100 µg/mL arecoline for 24 h in SCC9.



SCC9			
	CON	ARE 12.5	ARE 100
GALNT 14	24887.108	33044.229	43366.037
GAPDH	38861.409	46550.095	46304.844
ratio	0.640406734	0.709863836	0.936533487
comparison	1.00	1.11	1.46

Figure S1. All Western blot figures (uncropped blots) in Figure 4g-n, include densitometry readings/intensity ratio of each band.

Supplementary Figure S2.

GDC TCGA Head and Neck Cancer (HNSC), n=612

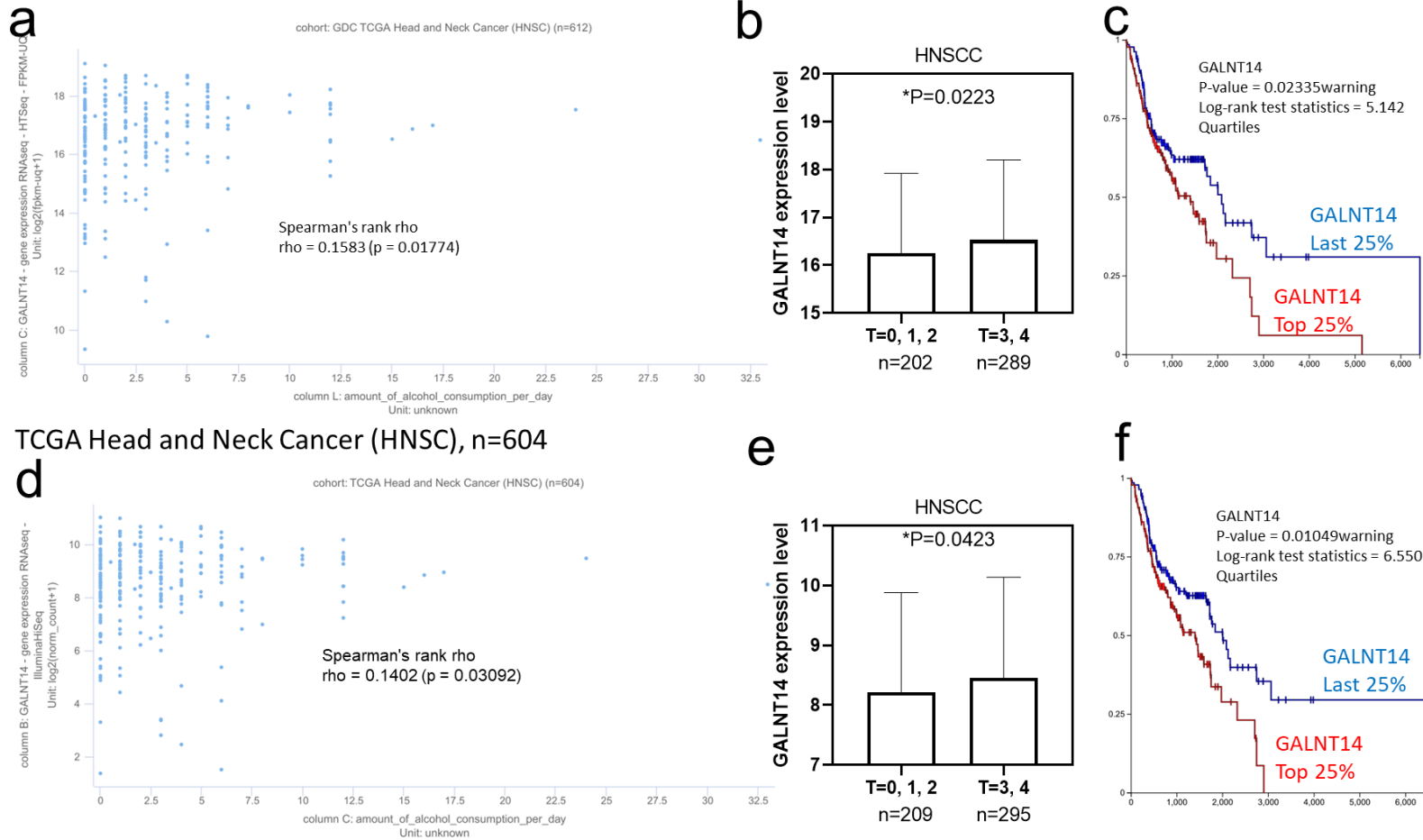


Figure S2. *GALNT14* expression level was associated with alcohol consumption, tumor stage, and survival time in head and neck cancer. (a, b, c) GDC TCGA Head and Neck Cancer profile. (d, e, f) TCGA Head and Neck Cancer profile. (a), (d) The relation between *GALNT14* expression level and alcohol consumption analyzed using Spearman's rank correlation test. (c), (e) *GALNT14* expression level in tumor early stage (0, 1, and 2) and late stage (3, and 4), analyzed using Mann-Whitney test. (c), (f) The survival time of *GALNT14* expression level last 25% and top 25% groups, Analyzed using Log-rank test. * p < 0.05.

Supplementary Figure S3.

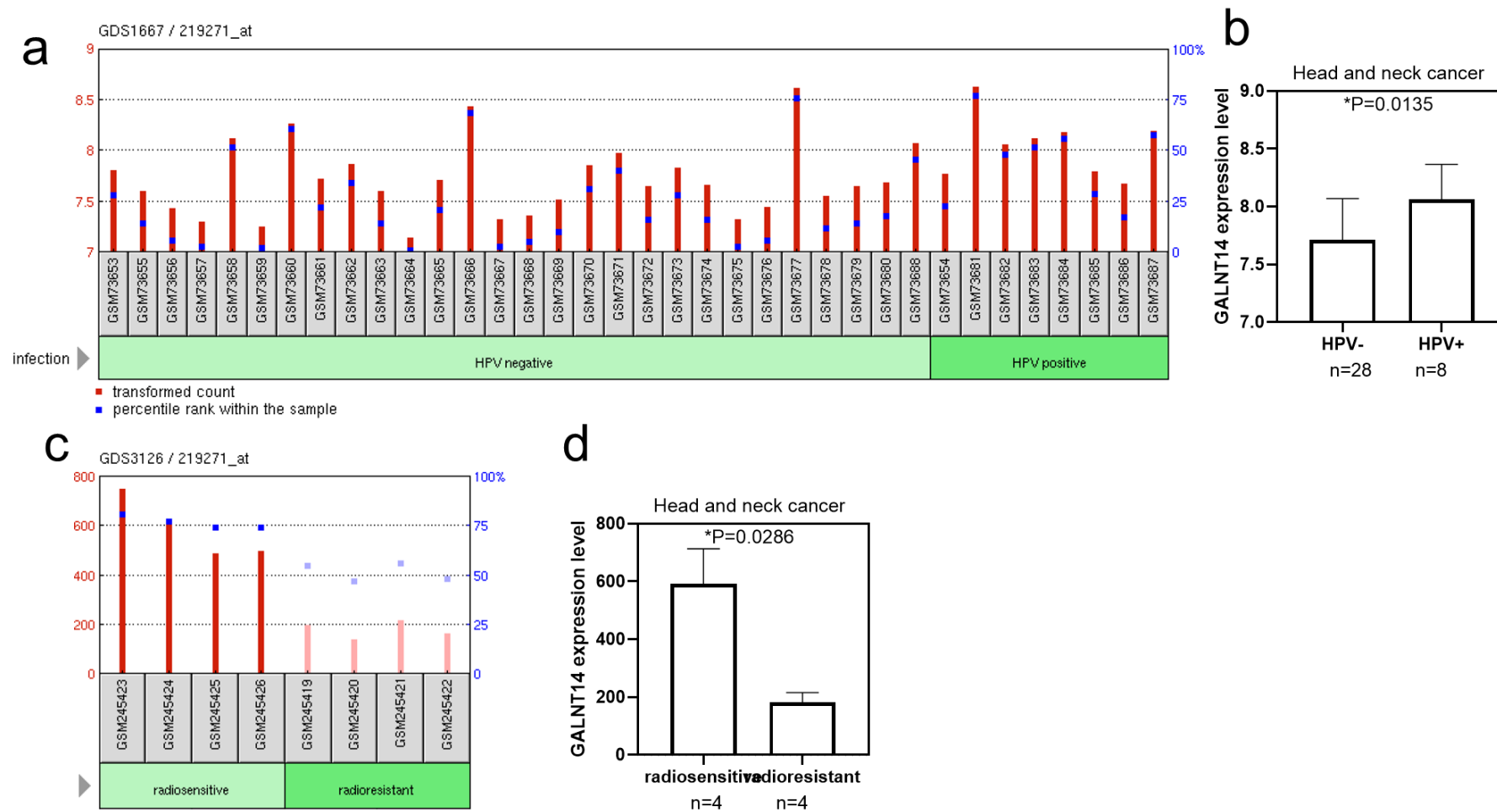


Figure S3. The relation between *GALNT14* expression and HPV positivity, or radiosensitivity in head and neck cancer. The data generated in this study are publicly available in GEO at GDS1667 / 219271_at and GDS3126 / 219271_at profiles. (a) The *GALNT14* expression level of each case in the GEO profile. HPV-, n=28; HPV+, n=8. (b) *GALNT14* expression level (mean \pm SD) in HPV- and HPV+ groups. (c) The *GALNT14* expression level of each case in the GEO profile. Radiosensitive, n=4; Radioresistant, n=4. (d) *GALNT14* expression level (mean \pm SD) in radiosensitive and radioresistant groups. (b), (d), analyzed using Mann-Whitney test. * $p < 0.05$.