

Supplementary Materials

Western blots for K562 cell lysate showing ARG1 and ARG2 bands with densitometry readings were shown in Figure S1.

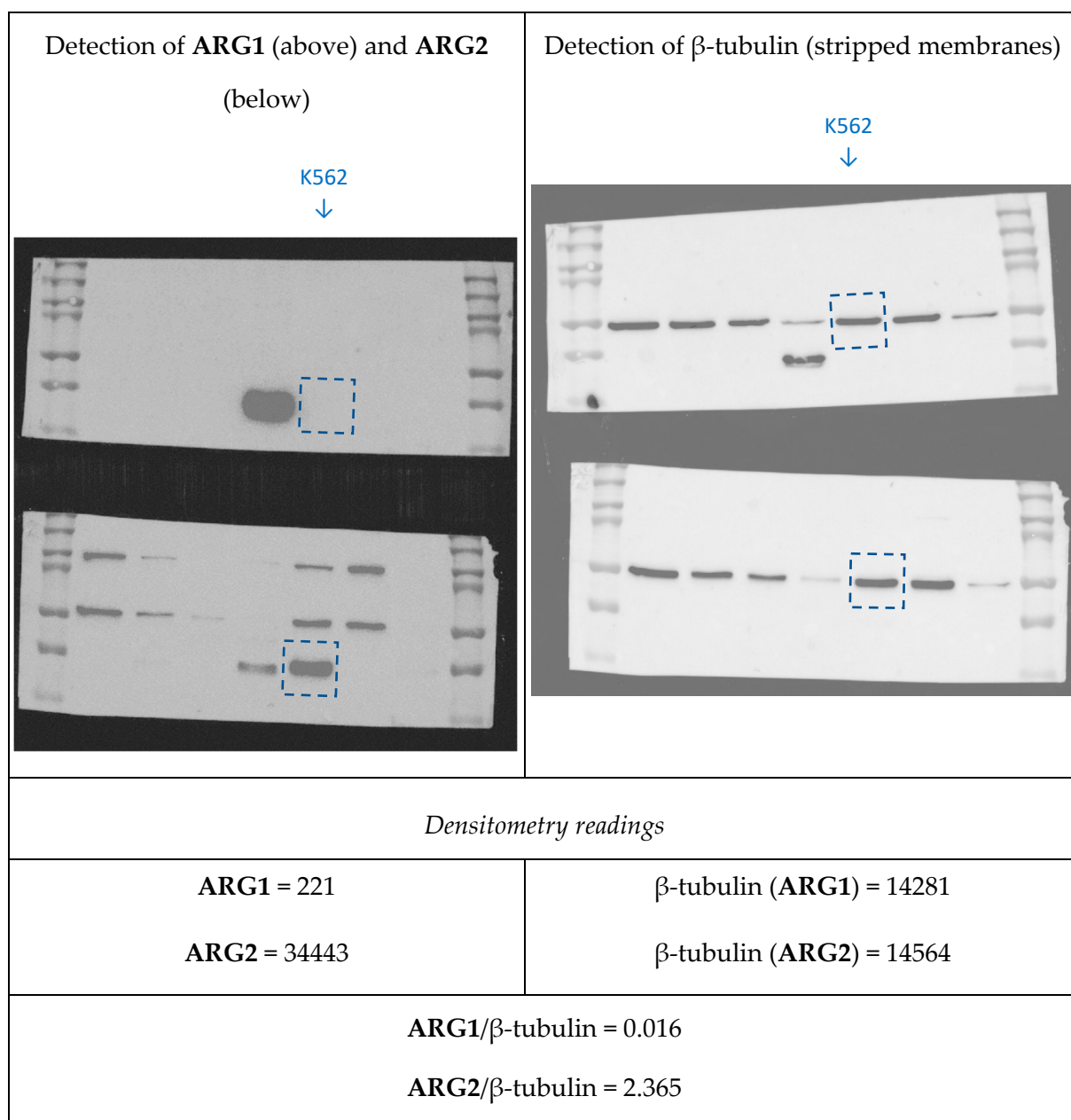


Figure S1. ARG1 and ARG2 expression (left panel) was confirmed in K562 cell lysate by SDS-PAGE and western blotting with specific antibodies; after stripping, detection of β -tubulin (right panel) was performed.