

Figure 2B

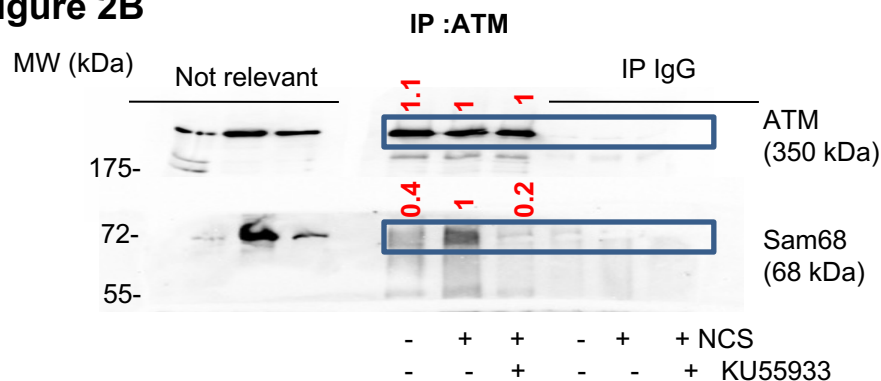
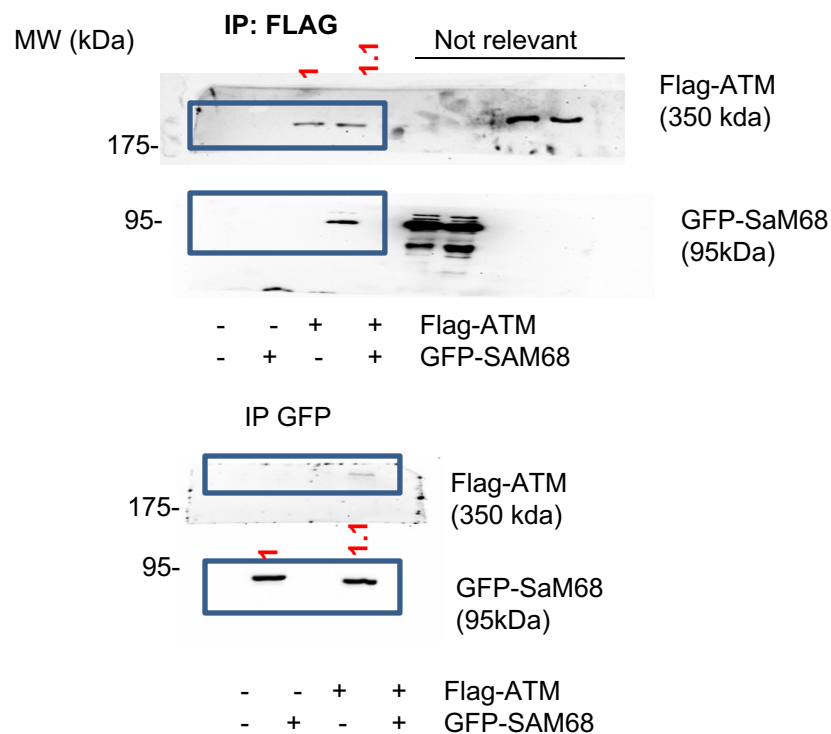


Figure S1. Uncropped Western blot of Figure 2 A and 2B and and normalized densitometry in red.

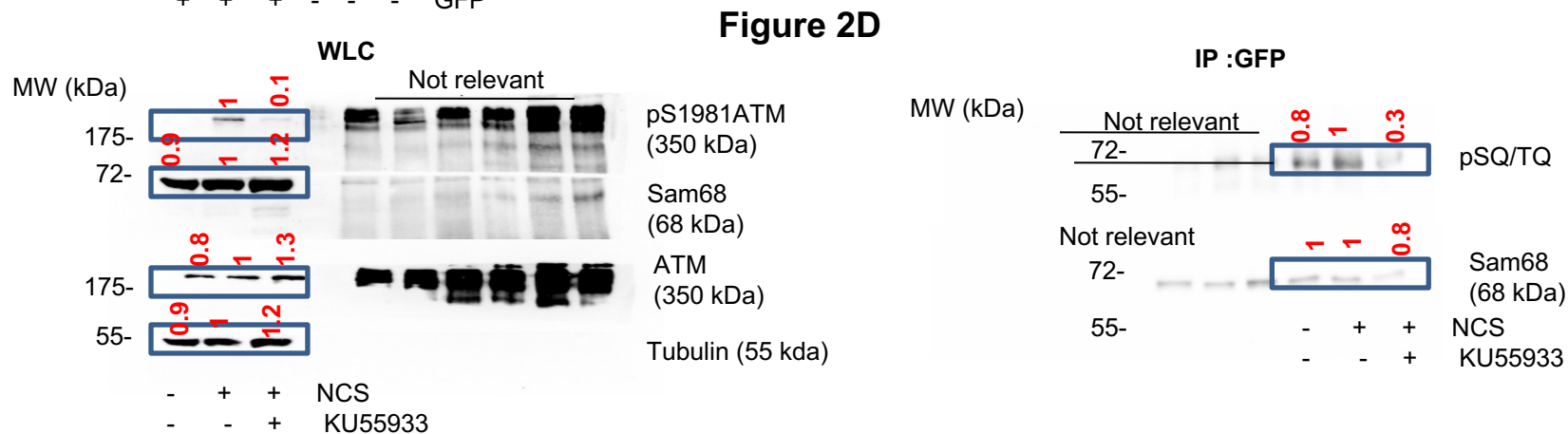
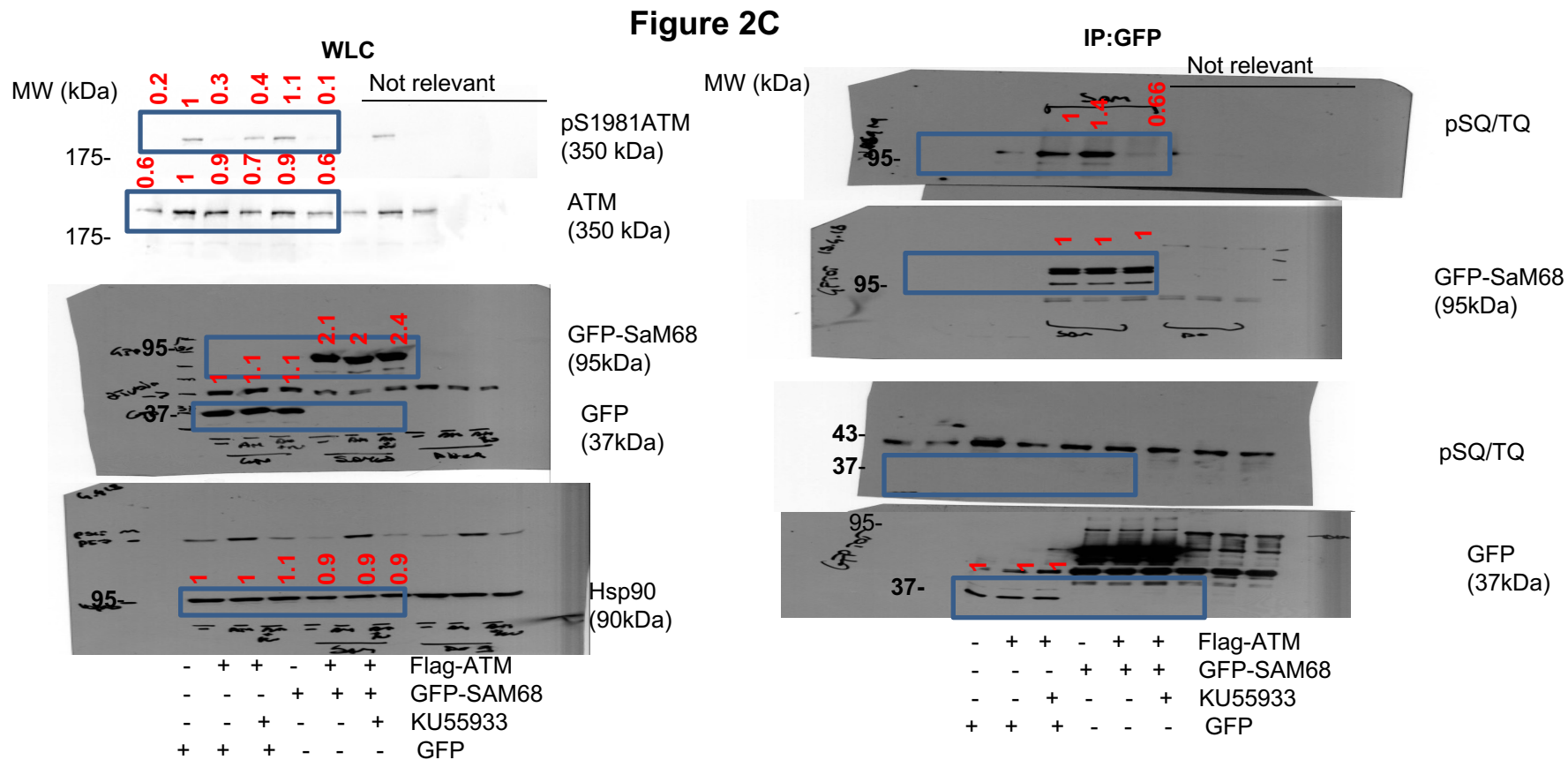


Figure S1. Uncropped Western blot of Figure 2 C and 2D and normalized densitometry in red.

Figure 3B

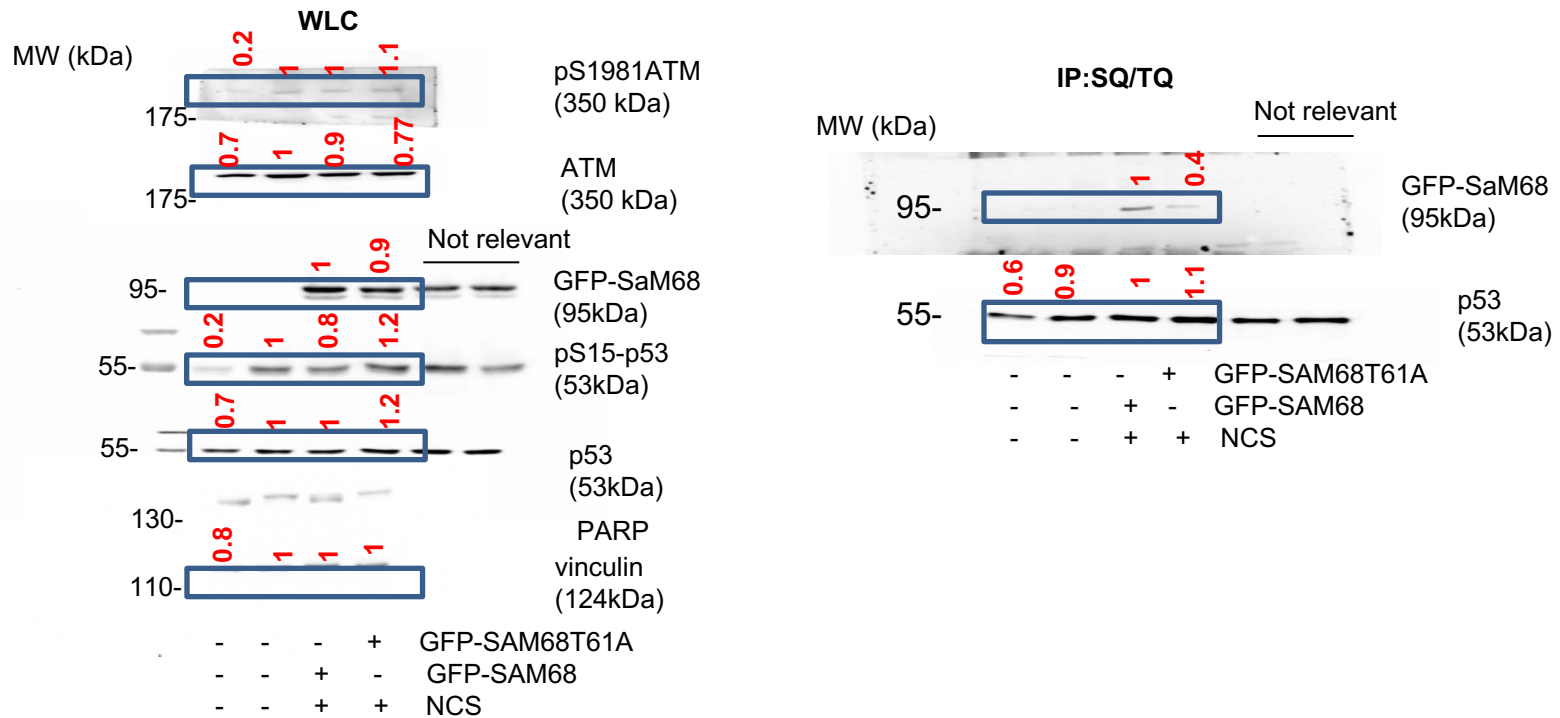


Figure 3C

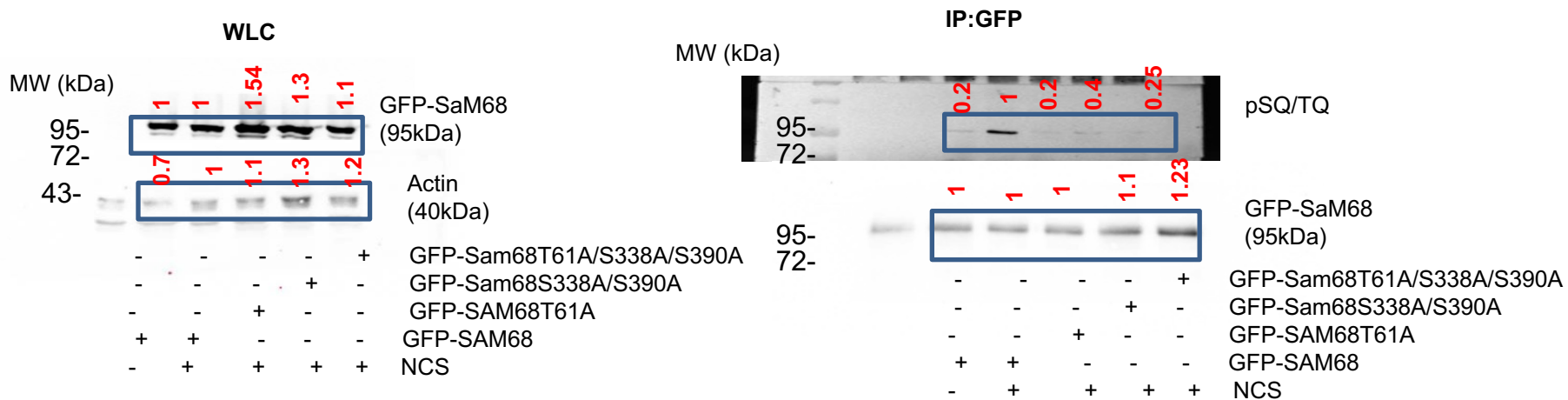


Figure S1. Uncropped Western blot of Figure 3 B and 3C and normalized densitometry in red.

Figure 4A

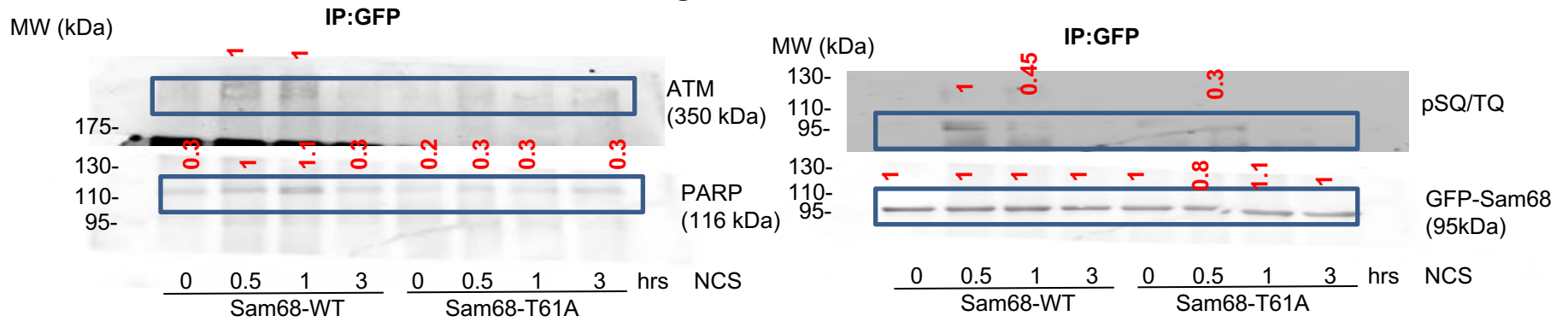


Figure 4B

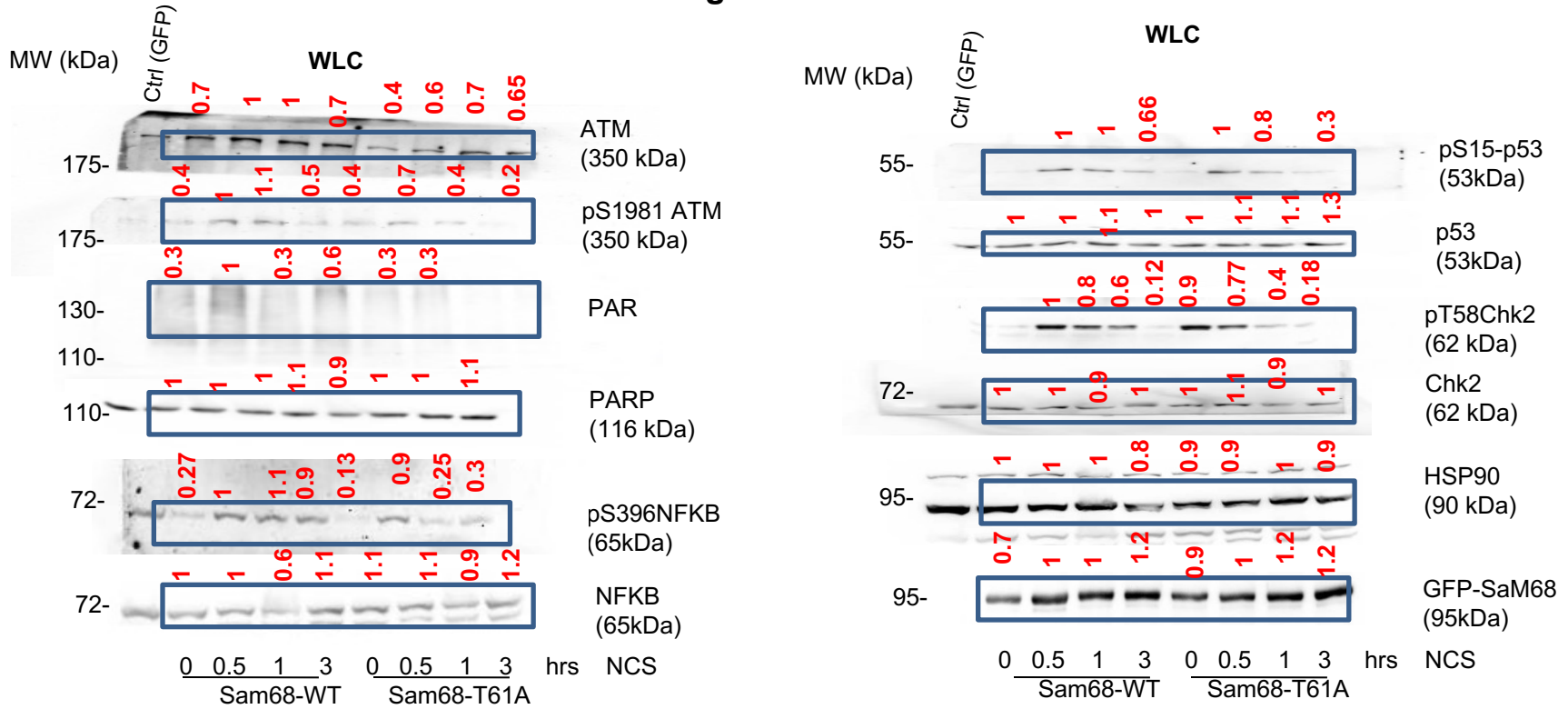


Figure S1. Uncropped Western blot of Figure 4A and 4B and normalized densitometry in red.

Figure 4C

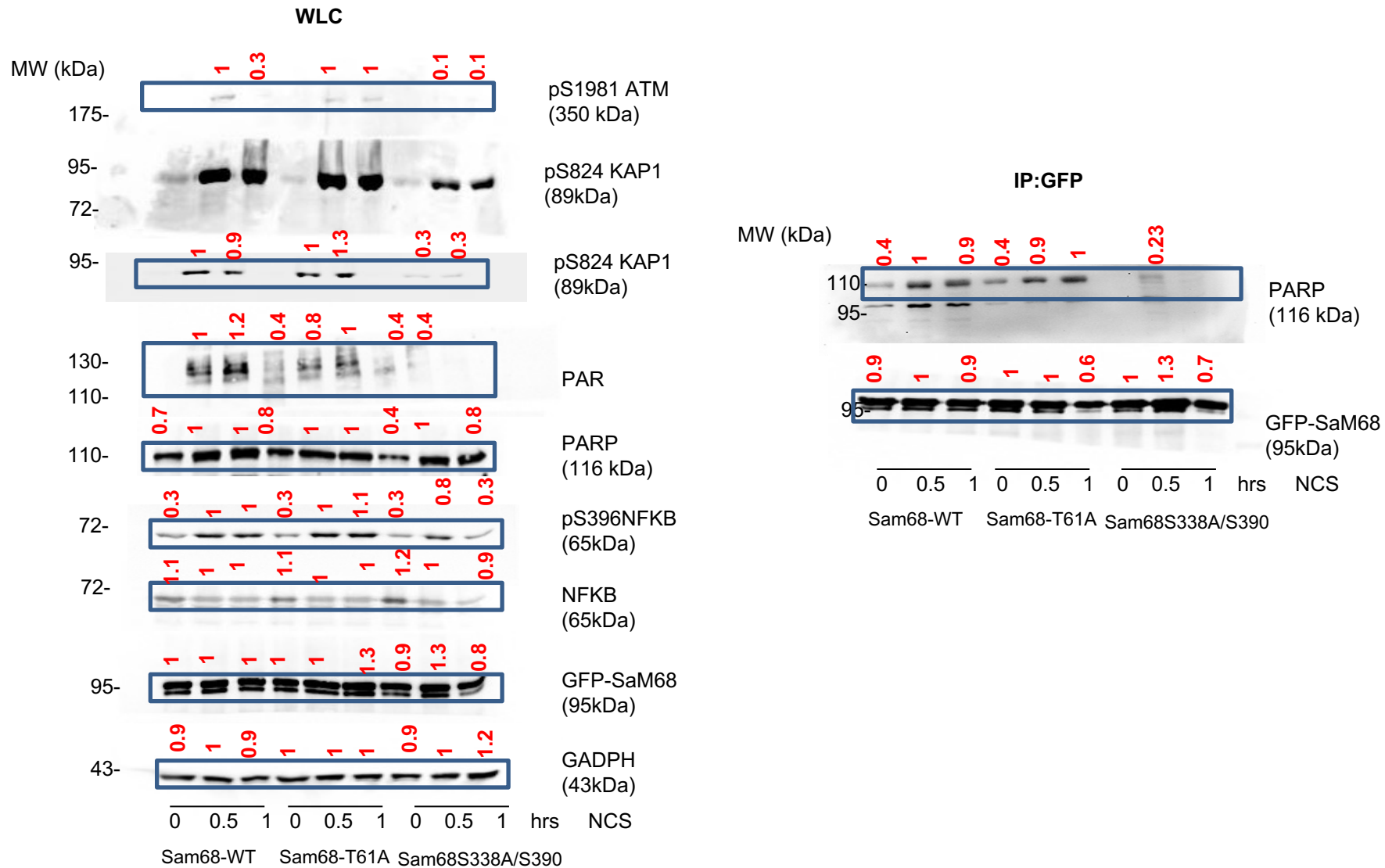
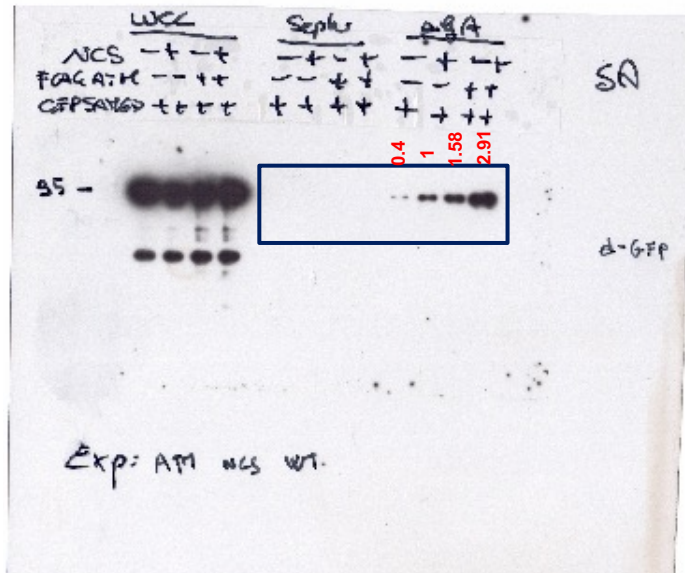


Figure S1. Uncropped Western blot of Figure 4C and normalized densitometry in red.

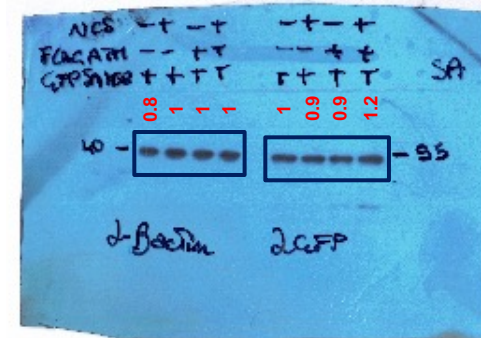
Figure 5A

PolyA pulldown



GFP-Sam68 (95 kDa)

WCL

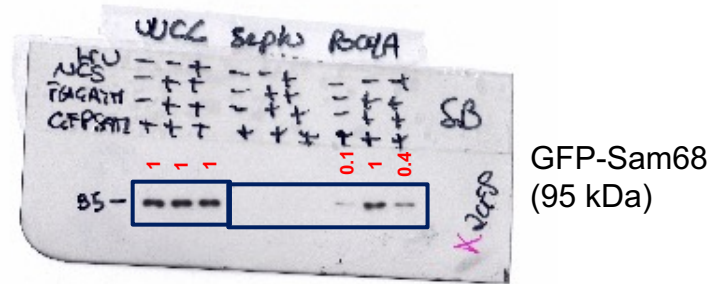


β-Actin (40 kDa)

GFP-Sam68 (95 kDa)

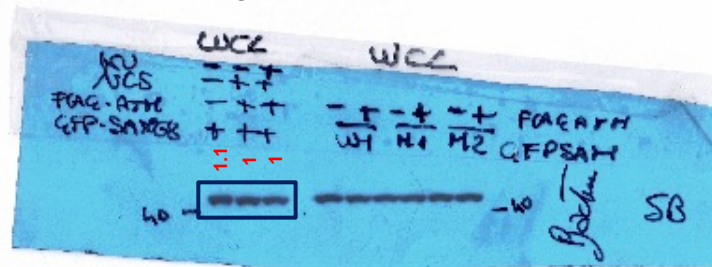
Figure S1. Uncropped Western blot of Figure 5A and normalized densitometry in red.

WCL PolyA pulldown



GFP-Sam68
(95 kDa)

WCL



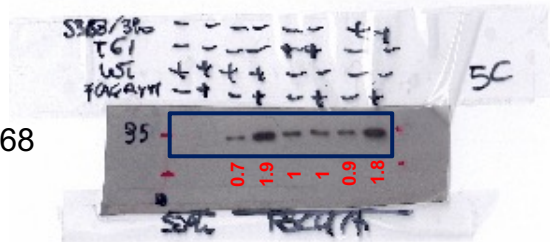
β-Actin
(40 kDa)

Figure S1. Uncropped Western blot of Figure 5B and normalized densitometry in red.

Figure 5C

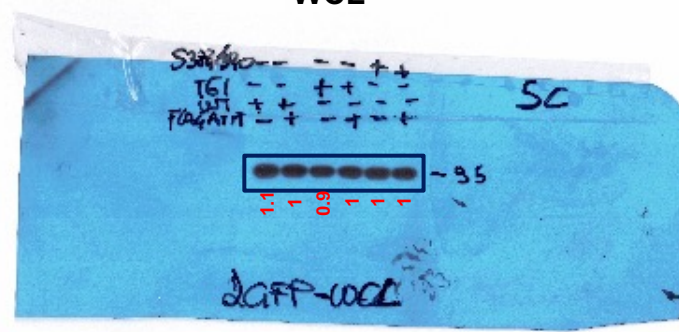
PolyA pulldown

GFP-Sam68
(95 kDa)



WCL

GFP-Sam68
(95 kDa)



WCL

β -Actin
(40 kDa)

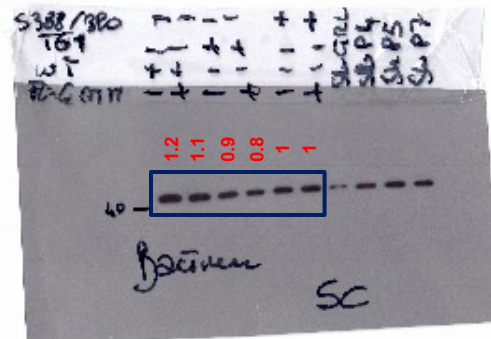


Figure S1. Uncropped Western blot of Figure 5C and normalized densitometry in red.

Figure 6C

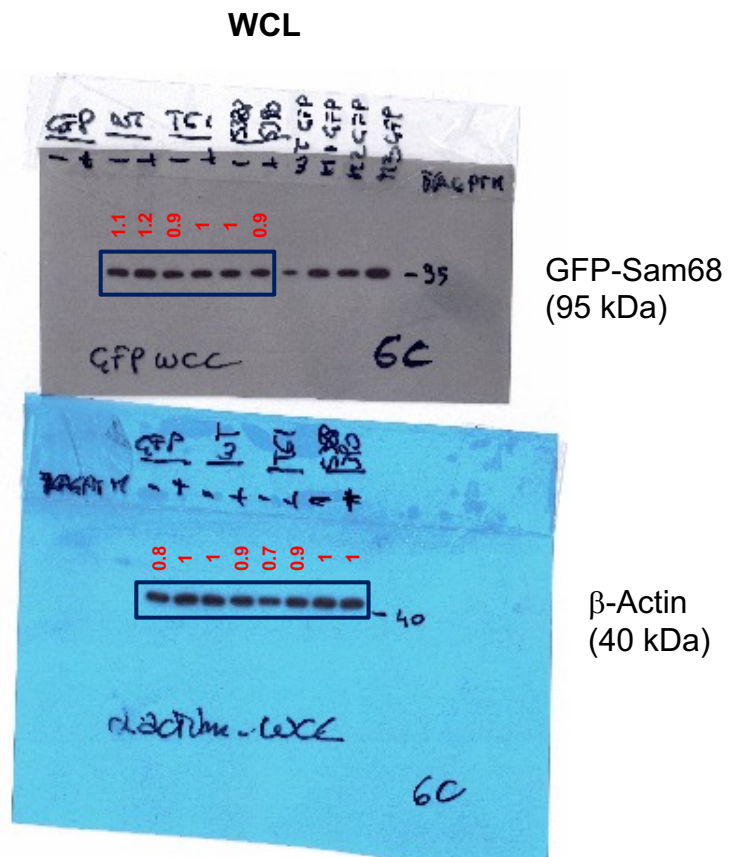


Figure S1. Uncropped Western blot of Figure 6C and normalized densitometry in red.

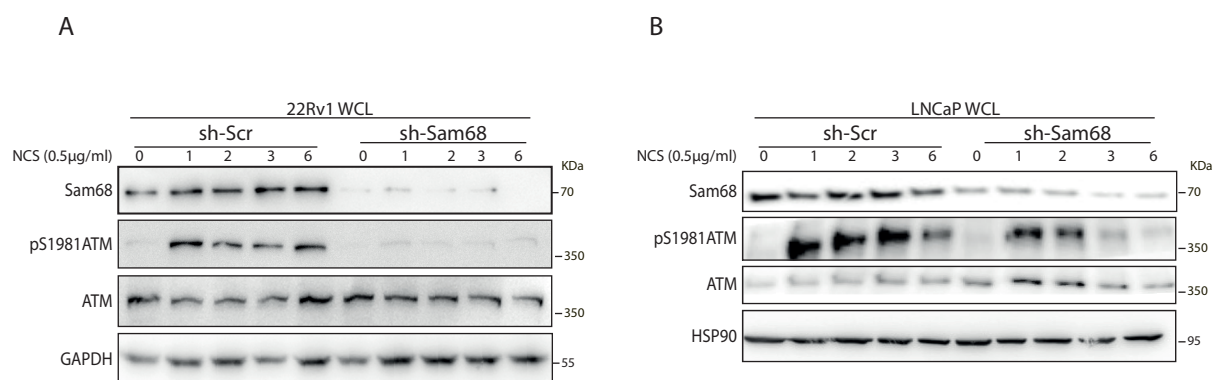


Figure S2. Sam68 induces DDR pathway activity. Relative to Figure 1. (A,B) 22Rv1 (**A**) and LNCaP (**B**) cells were silenced (sh-Sam68) or not (sh-Scr) for Sam68 and treated or not with NCS (500 ng/ml) for 1,2,3 or 6 hours. Proteins were extracted and analyzed by Western Blot analysis. (**A**) Representative Western blot of total protein extracts (WCL) were immunoblotted for the indicated antibodies. GAPDH and HSP90 were evaluated as loading controls of total protein extracts.

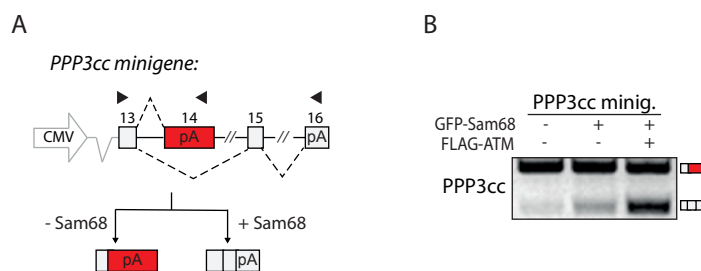


Figure S3. ATM modulates APA activity of Sam68. Relative to Figure 5. **(A)** Schematic representation of PPP3CC minigene. The exon 14 in red is the premature last exon, while the exon 16 contains the canonic dpA; Black arrows indicate primers used for the PCR analysis. **(B)** Representative PCR agarose gel of pA selection in PPP3CC minigene system transfected in HEK293T cells in presence, or not, of GFP-Sam68 and FLAG-ATM plasmids.