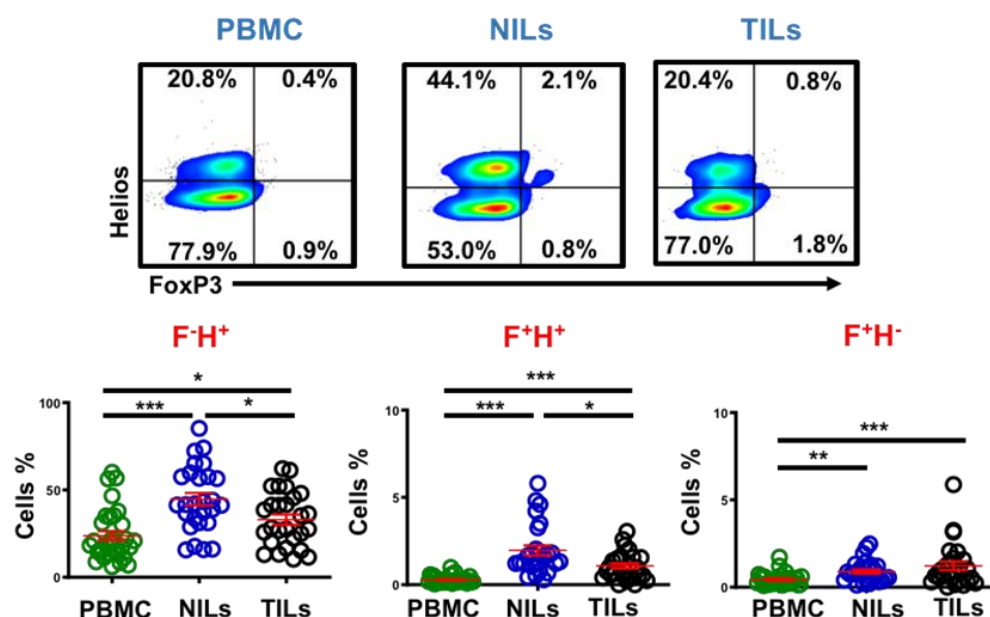


# Circulating and Tumor-Infiltrating Immune Checkpoint-Expressing CD8<sup>+</sup> Treg/T Cell Subsets and Their Associations with Disease-Free Survival in Colorectal Cancer Patients

Alhasan Alsalman, Mohammad A. Al-Mterin, Khaled Murshed, Ferial Alloush, Samia T. Al-Shouli, Salman M. Toor and Eyad Elkord



**Figure S1.** FoxP3 and Helios co-expression on CD8<sup>+</sup> T cells in CRC patients. Representative flow cytometric plots and scatter plots show the levels of FoxP3<sup>+</sup>Helios<sup>+</sup>, FoxP3<sup>+</sup>Helios<sup>-</sup> and FoxP3<sup>-</sup>Helios<sup>-</sup>, CD3<sup>+</sup>CD4<sup>-</sup> (CD8<sup>+</sup>) T cells in PBMCs, NILs and TILs from CRC patients. Statistical significance levels indicated at \*  $p < 0.05$ , \*\*  $p < 0.01$  and \*\*\*  $p < 0.001$ .