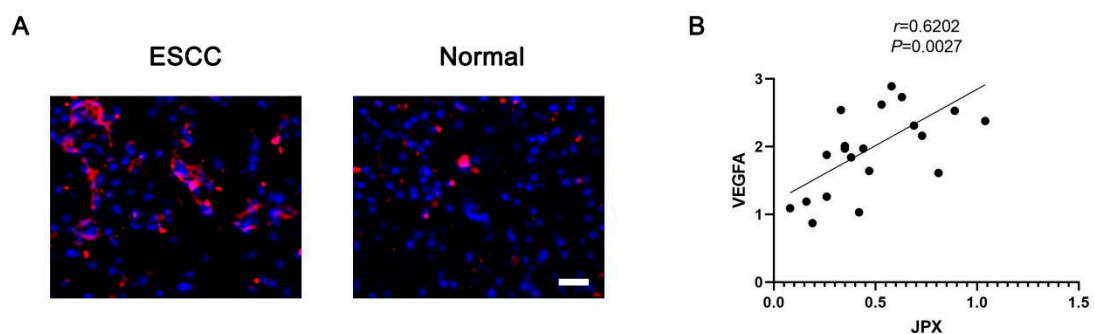


**Supplementary Figure S1. Clinical analysis of JPX, miR-516b-5p, and VEGFA for ESCC patients.** Expression of JPX (A), miR-516b-5p (B), and VEGFA (C) in patients with different T stages of ESCC. Expression of JPX (D), miR-516b-5p (E), and VEGFA (F) in patients with different N stages of ESCC. \* $P < 0.05$ , \*\* $P < 0.01$ . The statistical differences were calculated by Student's t-test.



**Supplementary Figure S2. LncRNA JPX expression in ESCC tissues.** The expression of JPX (red) in ESCC tissues or normal tissues was determined by FISH assay. Nuclei was stained by DAPI (blue). Scale bar, 50  $\mu\text{m}$ . (B) The coefficient between JPX and VEGFA in ESCC patients.