

Figure S1. Actin organization and FA in S1P5^{-/-} MEFs. (A), Representative images of S1P5^{+/+} and S1P5^{-/-} MEFs cultured in medium containing 10% FCS. Cells were fixed 24 h post plating and stained for F-Actin (Phalloidin-red) and DNA (Hoechst 33342-blue). Scale bar, 10 μ m. (B), Representative images of S1P5^{+/+} and S1P5^{-/-} MEFs cultured as in A and stained for F-Actin (Phalloidin-red), vinculin (a-vin-green) and DNA (Hoechst 33342-blue). Scale bar, 10 μ m.

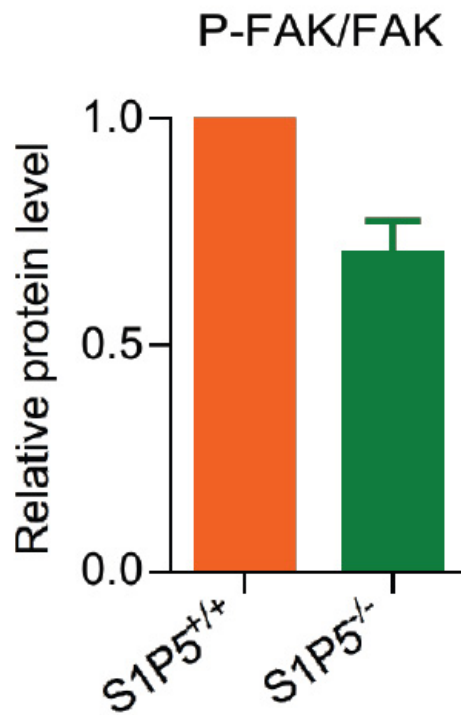


Figure S2. FAK phosphorylation is decreased in S1P5^{-/-} MEFs. S1P5^{+/+} and S1P5^{-/-} MEFs were cultured in medium containing 10% FCS during 24 h, and the total cell extracts were analyzed by SDS/PAGE with antibodies against phosphorylated FAK, FAK and tubulin. Data represent the quantification of relative P-FAK/FAK levels of 3 independent experiments (means \pm SEM).