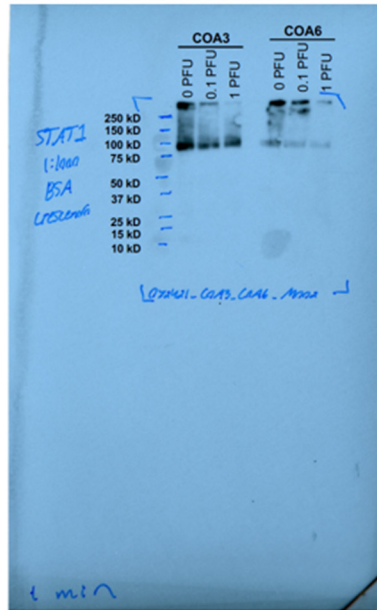
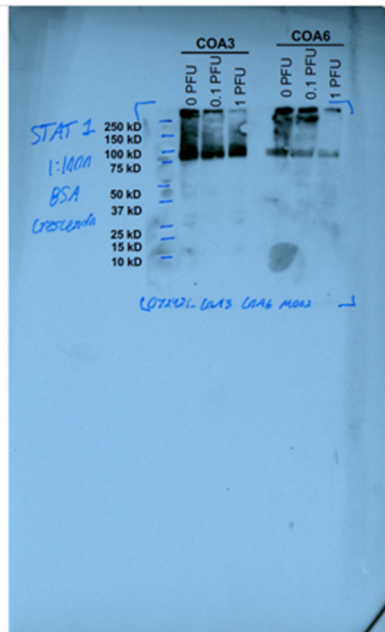


A



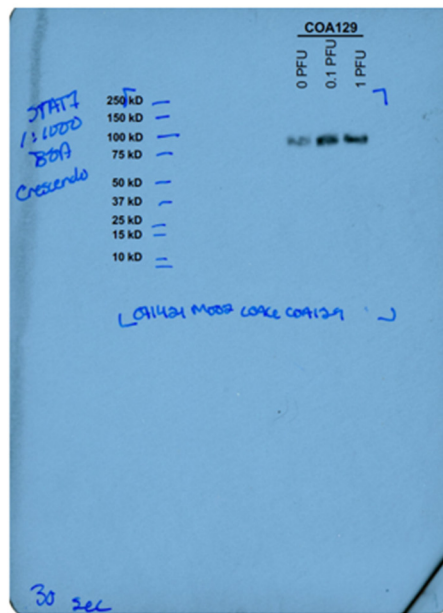
Lane	Ratio
COA3 STAT1 - 0 PFU	2.97
COA3 STAT1 - 0.1 PFU	2.05
COA3 STAT1 - 1 PFU	1.91

B



Lane	Ratio
COA6 STAT1 - 0 PFU	0.90
COA6 STAT1 - 0.1 PFU	0.63
COA6 STAT1 - 1 PFU	0.42

C



Lane	Ratio
COA129 STAT1 - 0 PFU	0.28
COA129 STAT1 - 0.1 PFU	0.58
COA129 STAT1 - 1 PFU	0.53

D

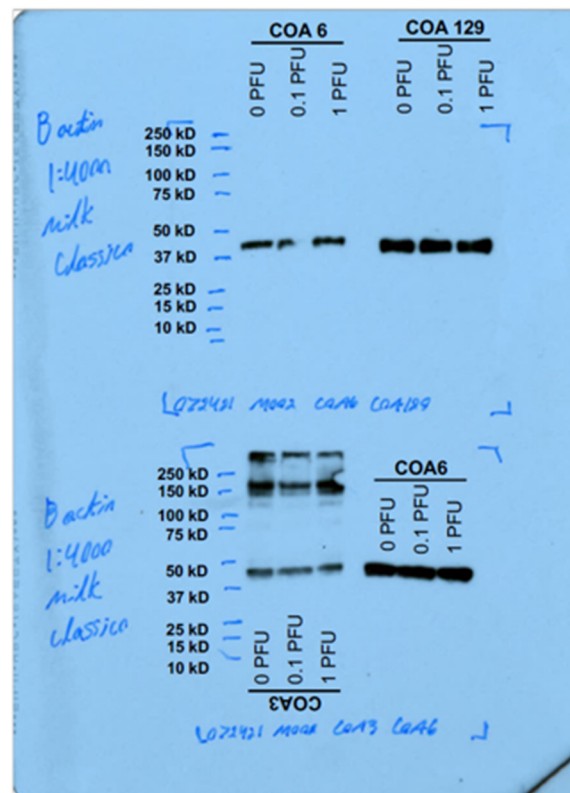


Figure S1. Full Western blot scans are provided and densitometry performed for Figure 3C. Following infection with M002, there is a decrease in the expression of STAT1 in COA3 (A) and COA6 (B) with increasing MOIs (0, 0.1, 1 PFU) of M002. Conversely, there is an increase in STAT1 expression in COA129 (C) with M002 infection. (D) β -actin was utilized as a loading control for all blots.

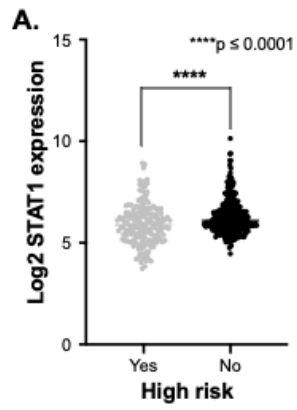


Figure S2. High-risk neuroblastoma expresses less STAT1. Using the SEQC publicly available database, STAT1 expression was compared across human neuroblastoma tumors that were classified as high-risk and non-high-risk. High-risk tumors were more likely to have significantly lower STAT1 in comparison to non-high-risk tumors.