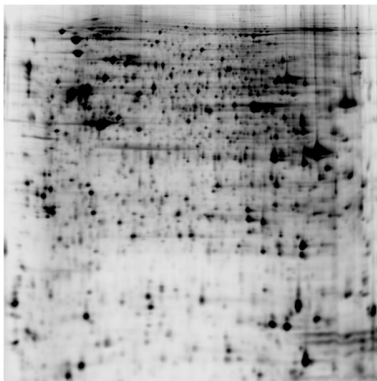
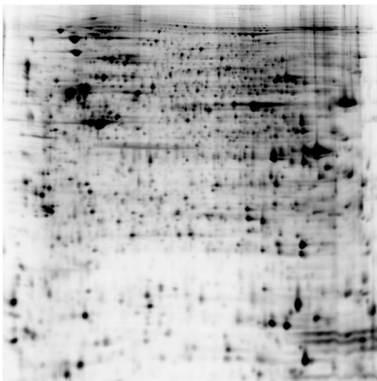


FLO-1

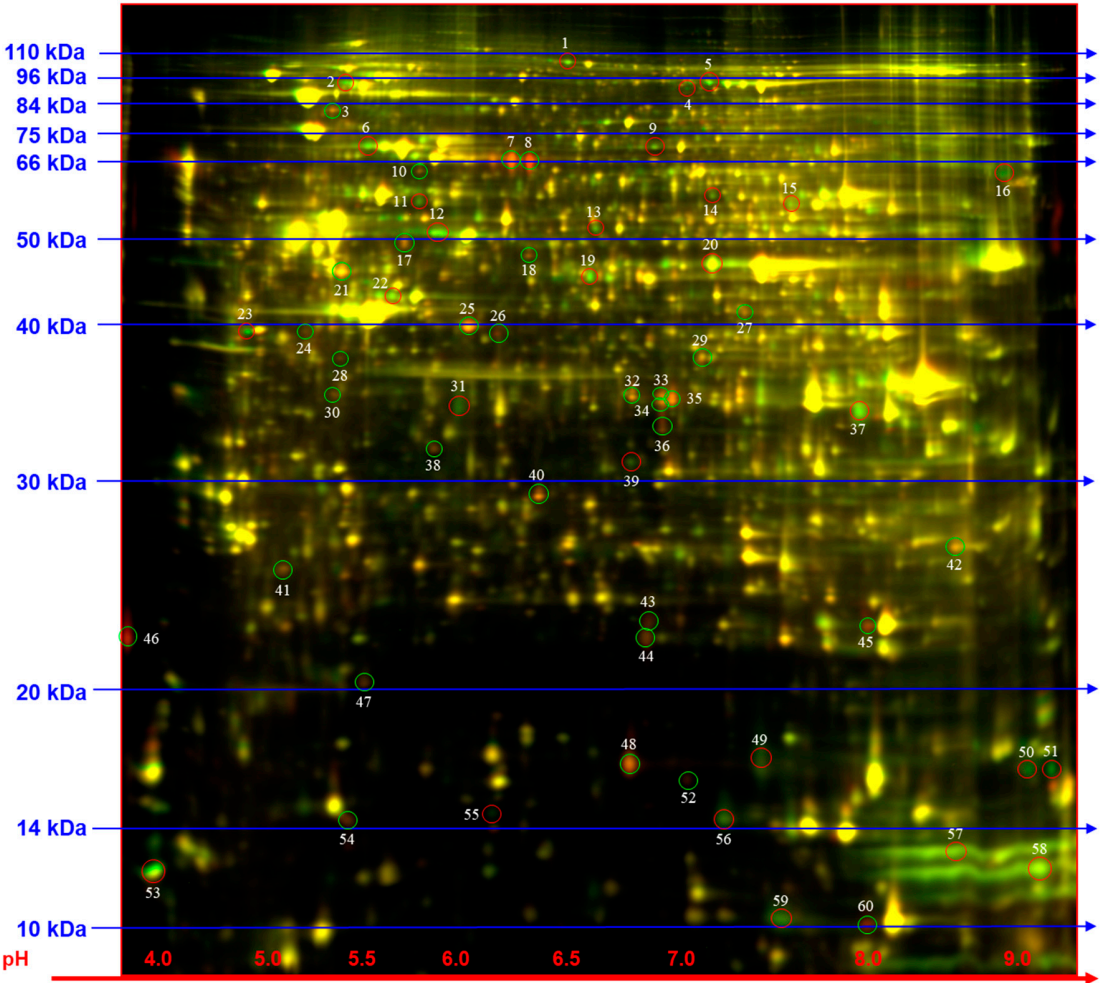
Control

Resveratrol



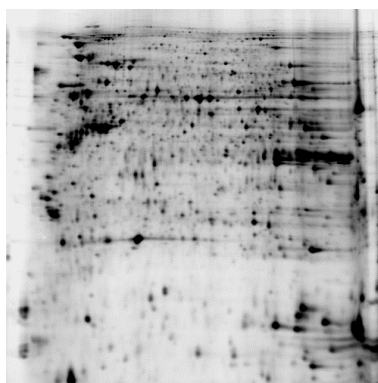
Overlay

FLO1 Control
/ FLO1 Res

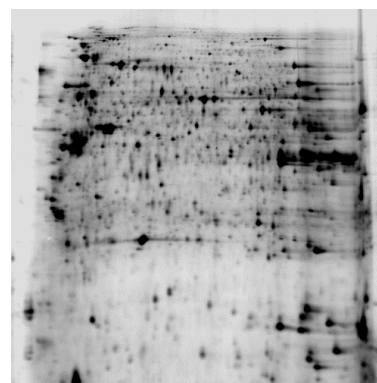


OE-19

Control



Resveratrol



Overlay

OE19 Control

/ OE19 Res

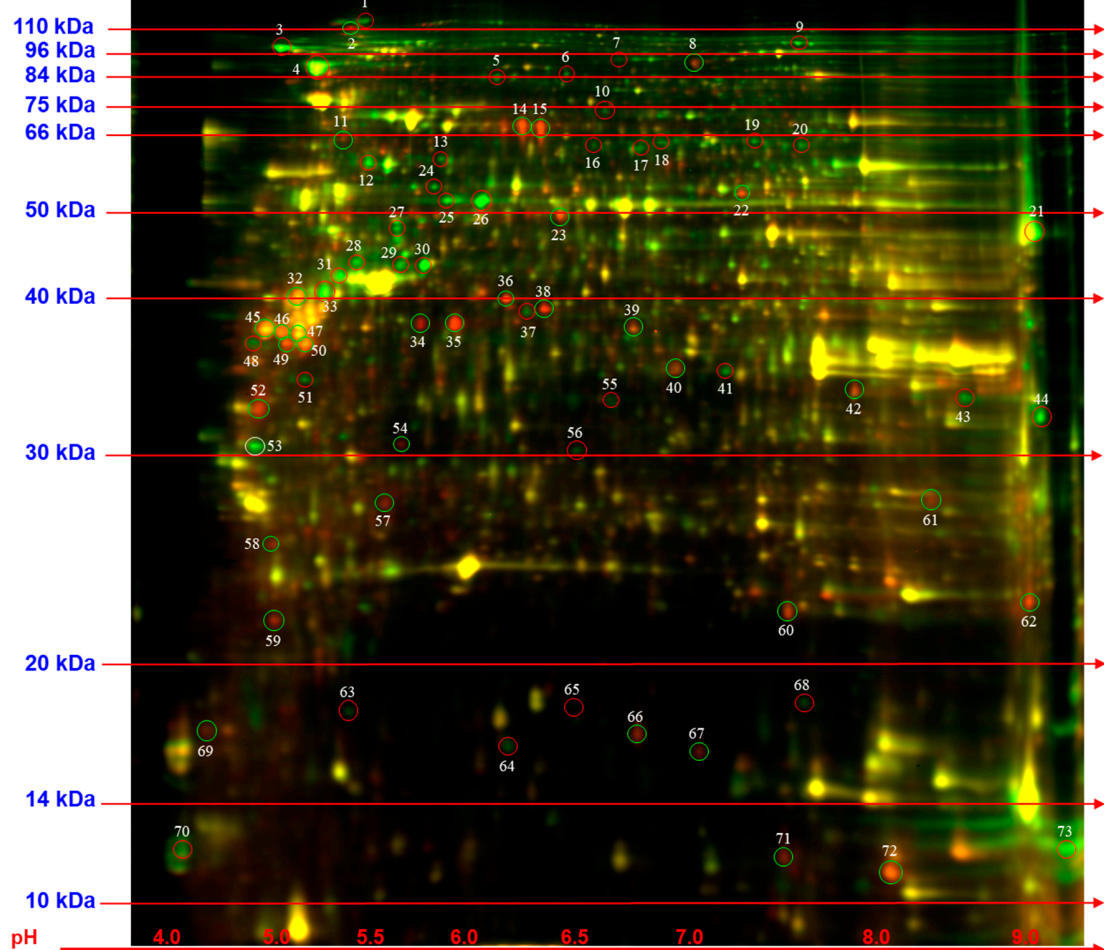


Figure S1. Proteomic Analysis of OE19 and FLO-1 cells on treatment with resveratrol at the IC₅₀ concentration of 50 μ M and 40 μ M, respectively. Differentially expressed proteins are circled. Detailed procedures are described in Materials and Methods.