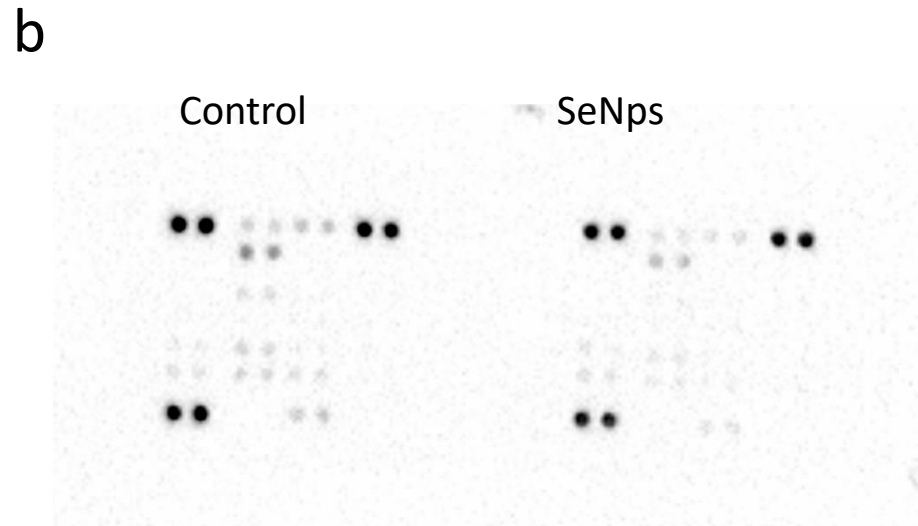
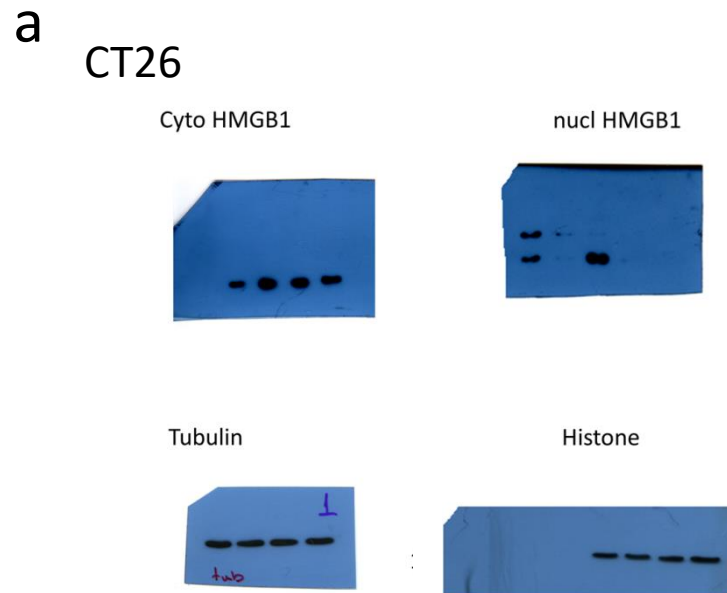
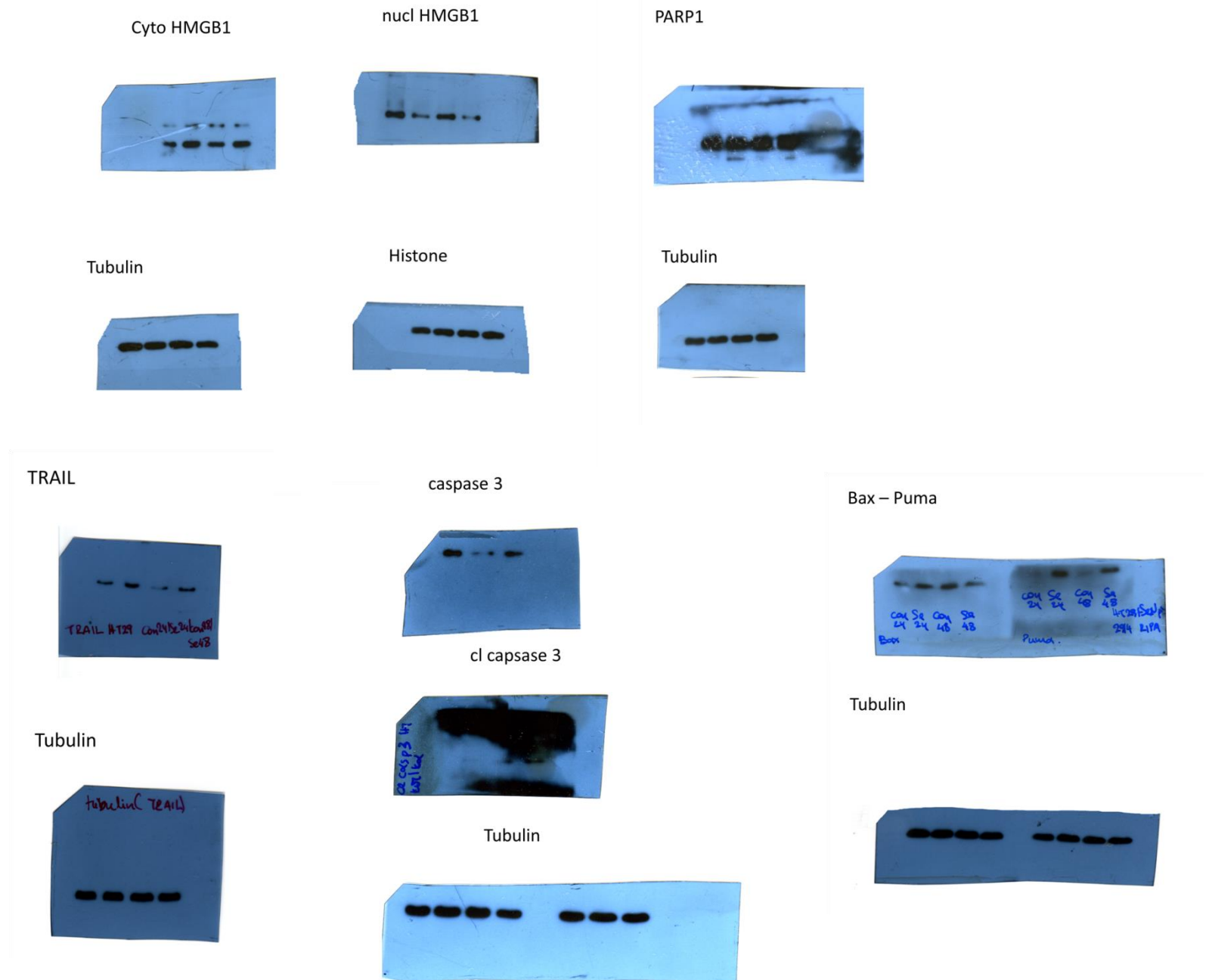


**Figure S1.** Gating strategy for flow cytometry analysis of ATP intracellular levels and surface exposure of calreticulin or ERp57 in HT29 and CT26 cells. Cells were incubated with 4  $\mu$ M quinacrine dihydrochloride (for the quantification of ATP levels) or labeled with either an anti-calreticulin or anti-ERp57 primary antibody and a Alexa fluor 488 conjugated secondary antibody. Dead cells or cells with compromised membrane were excluded from the analysis by 7-AAD staining. Only live cells (7-AAD negative) were analyzed.

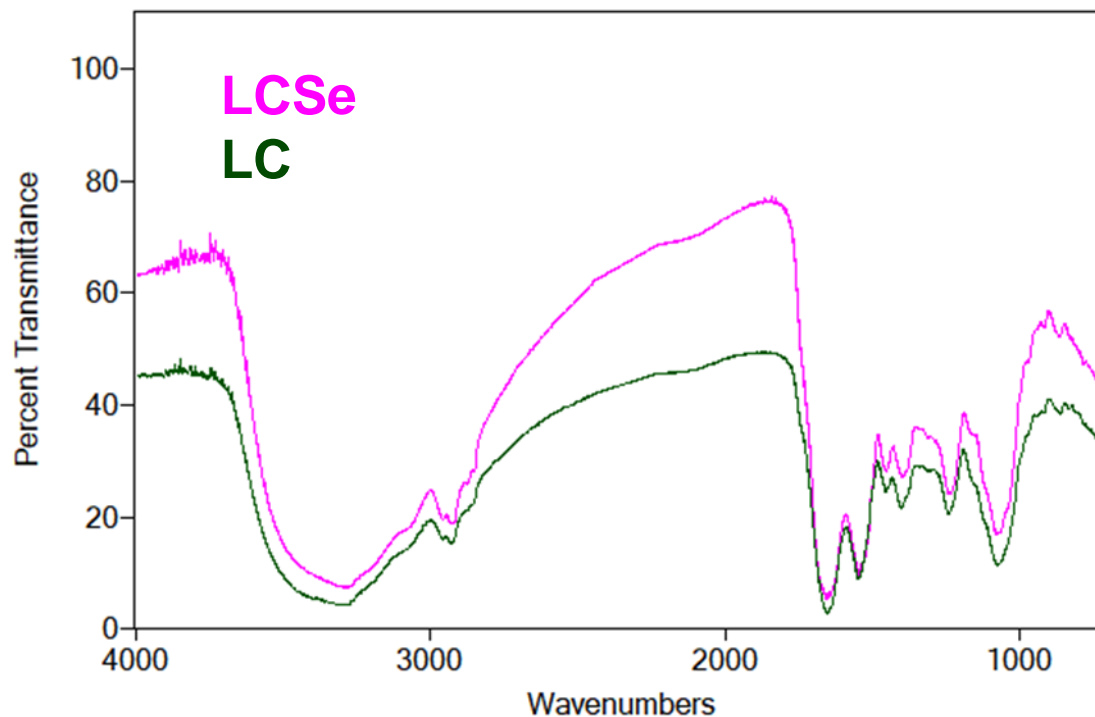


**Figure S2.** (a) Western blot images for CT26 cells. (b) Images of dot plots of protein levels analyzed with a mouse apoptosis array (ARY031, R&D Systems).

HT29



**Figure S3.** Western blot images for HT29 cells.



**Figure S4.**  $\mu$ -FTIR spectra of *L. casei* ATCC 393 bacteria grown in their standard medium (LC, green line) or in the presence of 20  $\mu\text{g/ml}$   $\text{NaHSeO}_3$  (LCSe, purple line).