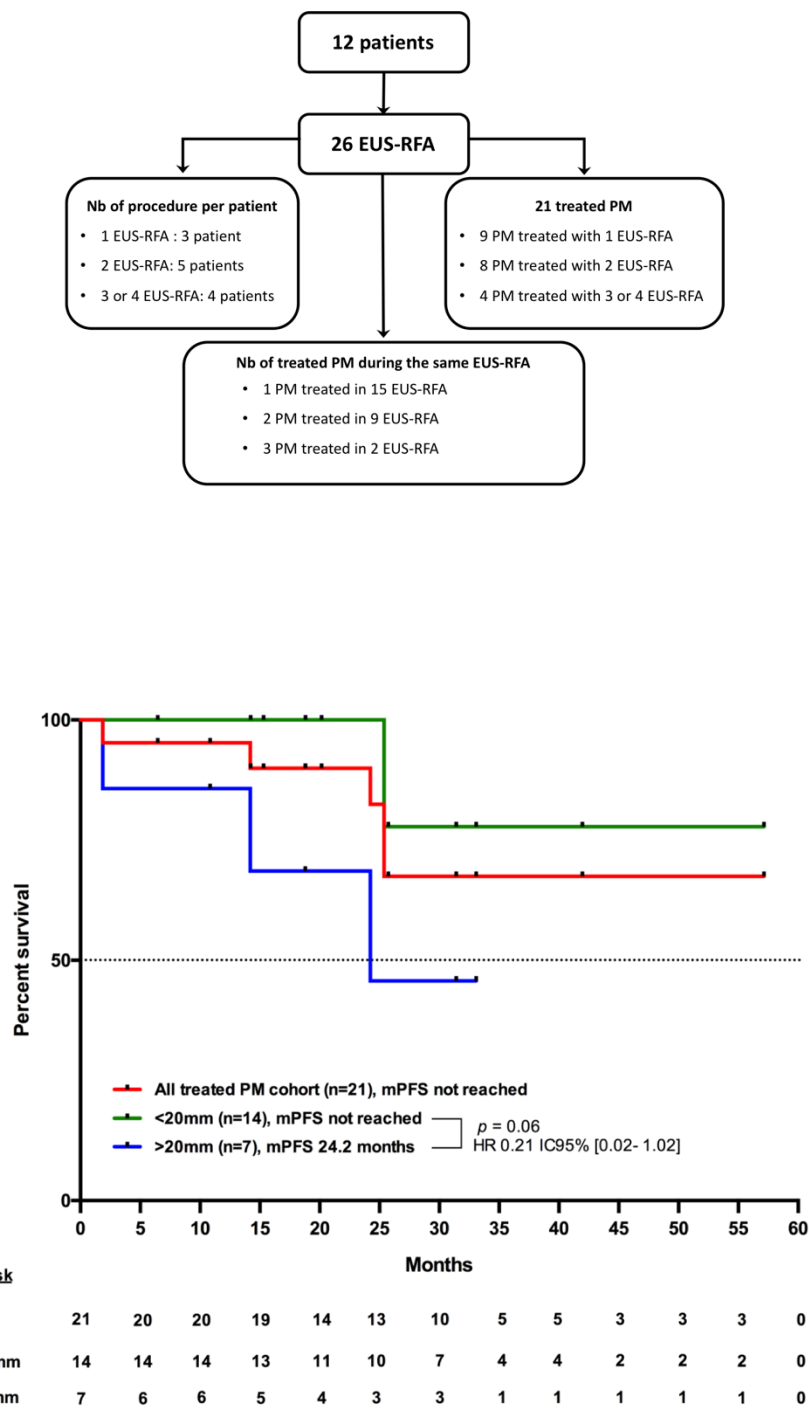


Supp Figure S1 - Study detail

Supp Figure S2 - Time until progression for all treated PM. Sub-group analysis according to PM size



**Supp Table S1- EUS-RFA procedures characteristics**

n = 26			
Median number of procedures per patient	n (range)	2	[1-4]
Median time between procedures (months)	n (range)	3.6	[2.5-15.2]
Median Number of Procedures per PM	All PM n (range)	2	[1-4]
	> 20mm n (range)	1	[1-4]
	≤ 20mm n (range)	1	[1-2]
Median number of PM treated in each EUS-RFA	n (range)	1	[1-3]
Post <b>EUS-RFA</b> severe Side Effects	Immediate (n, %)	0	0
	Delayed (n, %)	2	8

**SuppTable S2: Focal control at 2, 6 and 12 months according to PM size**

	< 20mm (%) (n=14)			> 20mm (%) (n=7)		
	2mo.	6mo.	12mo.	2mo.	6mo.	12mo.
<b>FOCAL CONTROL RATE</b>	92,9	91.7	72.7	85.7	71.4	75
<b>COMPLETE RESPONSE</b>	28,6	33.3	45.5	43.9	14.3	25
<b>PROGRESSION</b>	7.1	8.3	27.3	14.3	28.6	25
<b>NOT EVALUABLE</b>	0.0	14.3	21.4	0.0	0.0	42.9

PM: pancreatic metastasis CR: complete response, PR: partial response, SD: stable disease PD: progression

disease, mo.: Months

Focal Control Rate = CR + PR +SD

**Supp Table S3: Logistic regression of variables potentially associated with 6-months objective response.**

	6 months Response	
	OR (95%IC)	P-value
<b>Age</b> (for 5 years)	1.44 (0.39-6.17)	0.57
<b>Sex</b> (male vs female)	0.50 (0.07-3.13)	0.46
<b>Tumor Localization</b> (tail vs body) (head-uncus vs body)	0.50 (0.03-6.95)	0.60
	0.62 (0.06-5.22)	0.66
<b>Tumor size</b> (≥20mm vs <20mm)	0.37 (0.04-2.50)	0.31
<b>IMDC</b> (Intermediate vs good)	0.11 (0.009-0.92)	0.057

IMDC= International Metastatic RCC Database Consortium; OR = Odds Ratio.