

Supplementary Materials: *LNK1* Contributes to Cell Cycle Progression and Cisplatin Resistance

Minsu Jang, Rackhyun Park, Yea-In Park, Yeonjeong Park, Jin I. Lee, Sim Namkoong, Eun-Ju Lee and Junsoo Park

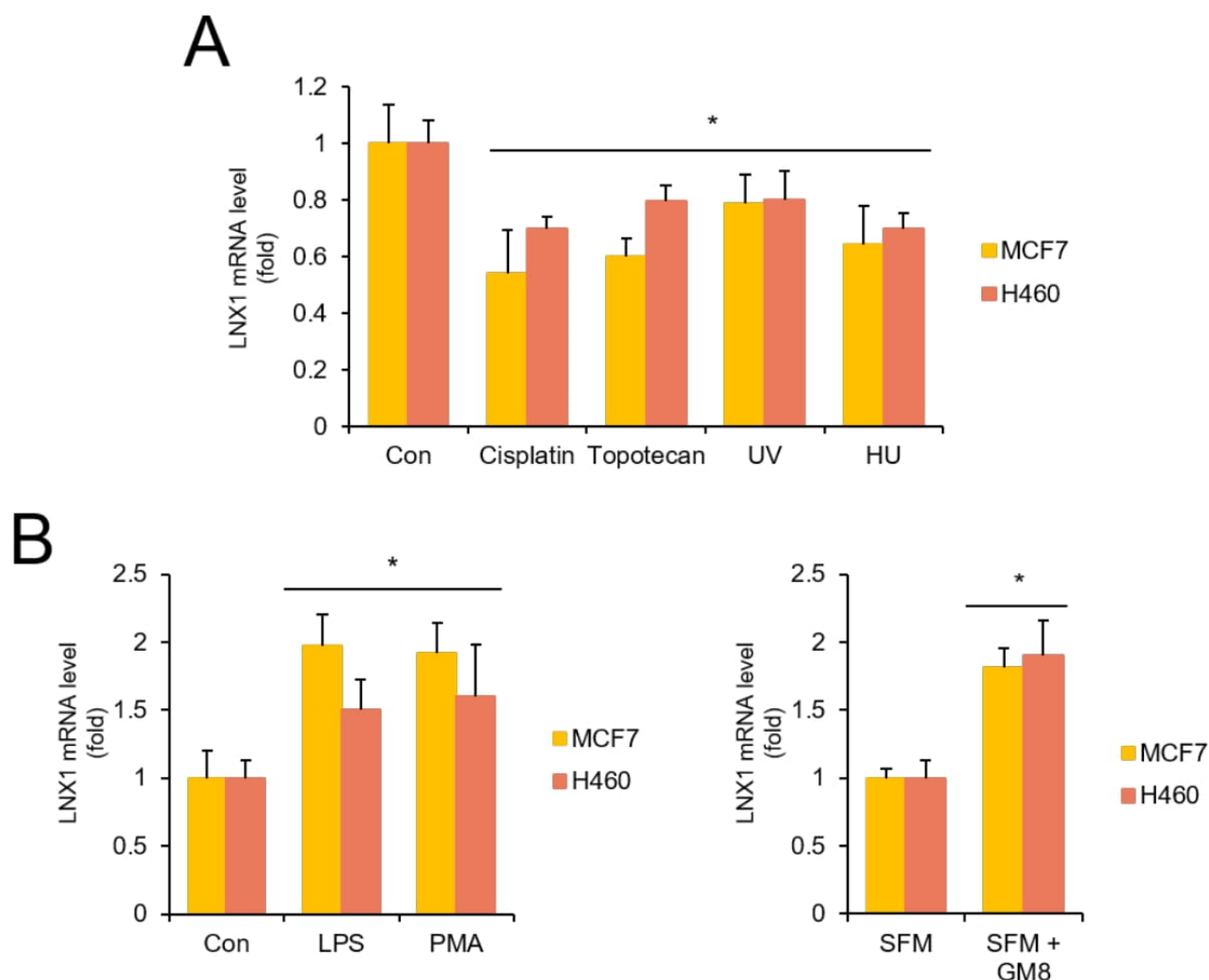
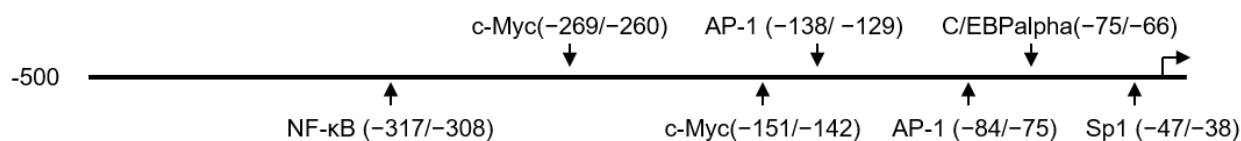


Figure S1. DNA damage and cell growth were associated with expression of *LNK1* in MCF7 and H460 cells. (A) Each cell was treated with cisplatin (10 $\mu\text{g/mL}$), topotecan (0.1 μM) and Hydroxyurea (1 μM) or irradiated with UV (50 mJ/cm^2). (B) Each cell was treated with LPS (100 ng/mL), PMA (200 nM) or incubated with serum-free medium for 24 h. serum-free medium was replaced to growth media and cells were incubated for 8 h. Expression levels were calculated by quantitative real-time PCR analysis. The results are represented as relative mRNA levels. Control vs. Drug-treated cells, *: $p < 0.05$.

A



B

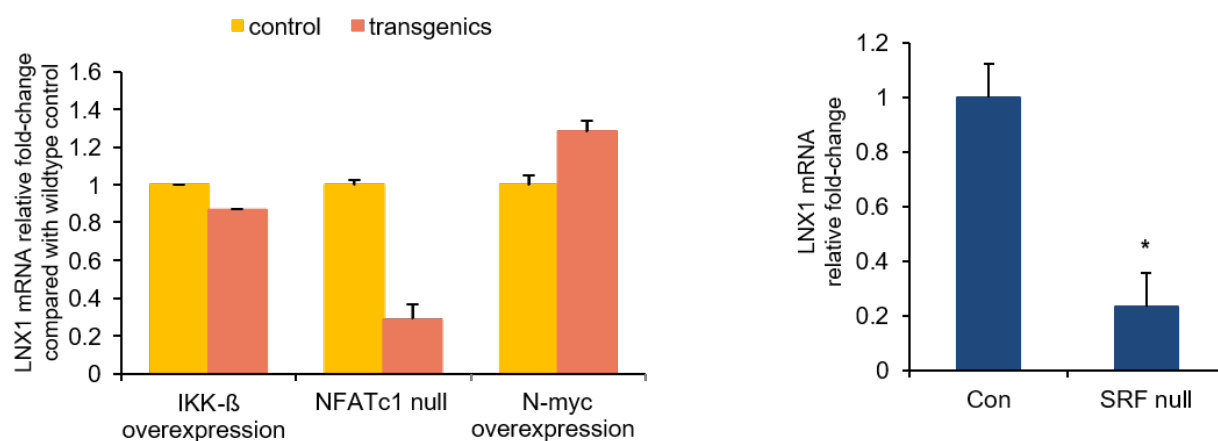


Figure S2. Several oncogenic transcription factors are involved with the expression of *LNK1*. (A) Potential transcription factor binding sites within the *LNK1* gene promoter were screened using the AliBaba 2.1 program (www.gene-regulation.com). The program searches putative transcription binding sites against the TRANSFAC database. (B) Serum response factor, *NFATc1*, *IKK- β* and *N-myc* contribute to the expression of *LNK1*. Expression profiles from the GSE13333, GSE17511, GSE37219, and GSE6077 datasets were obtained from the Gene Expression Omnibus. The expression of *LNK1* was analyzed, and the relative expression levels are shown in the graph. Wild type-mice vs. SRF deficient mice, *: $p < 0.05$.

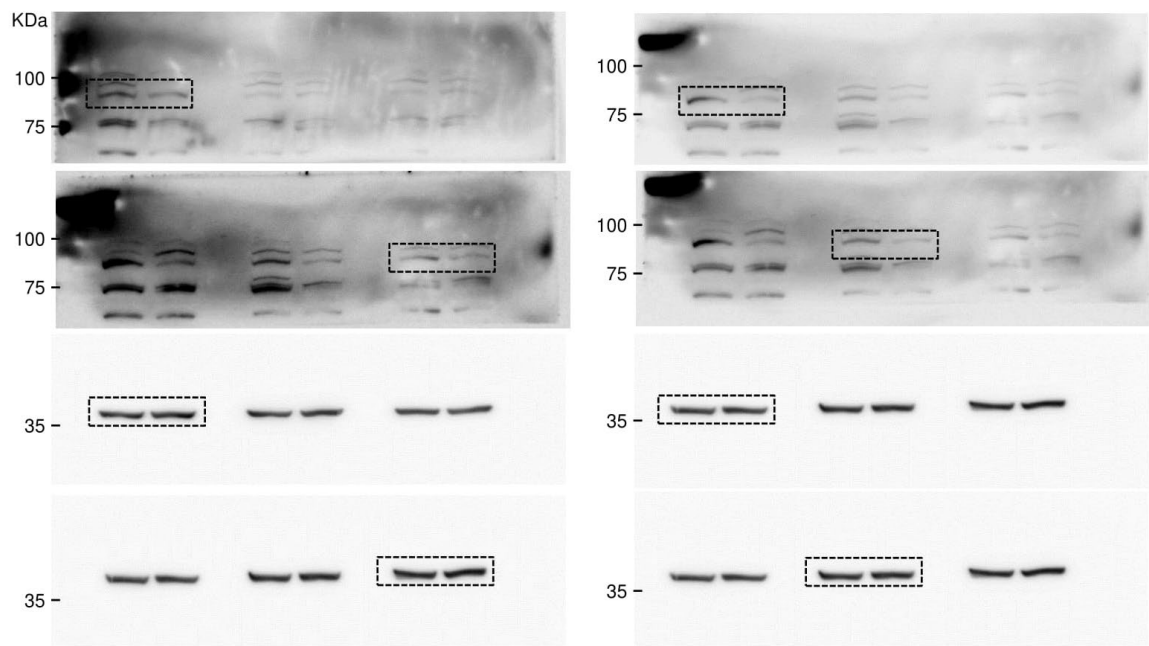


Figure 1C

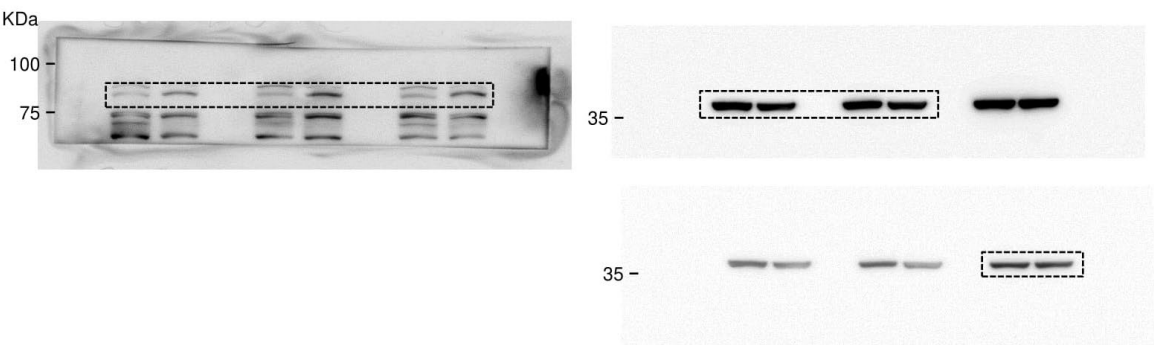


Figure 2C

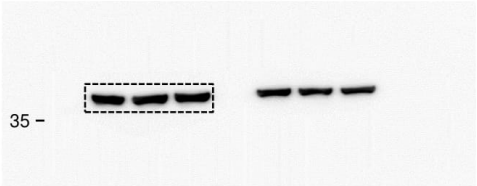
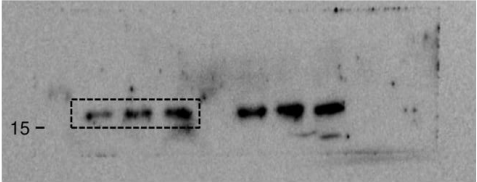
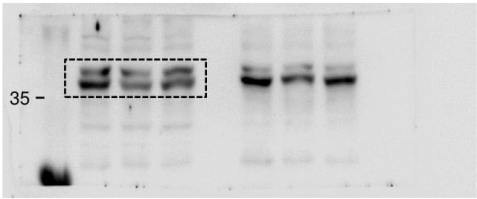
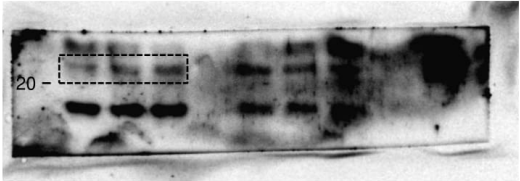
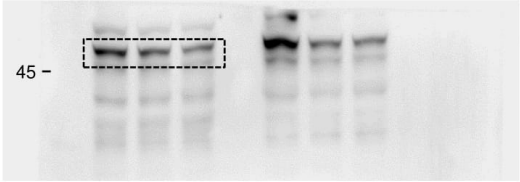
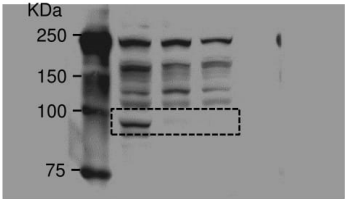


Figure 4A

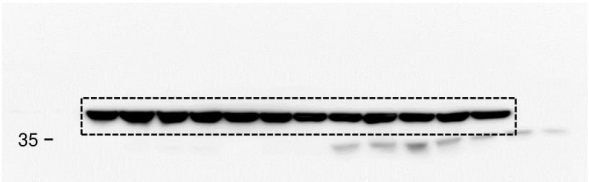
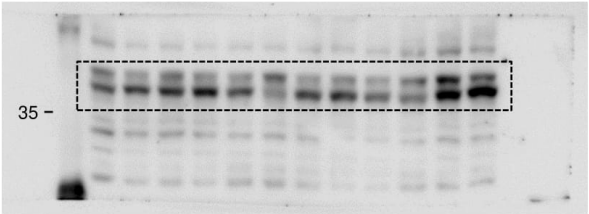
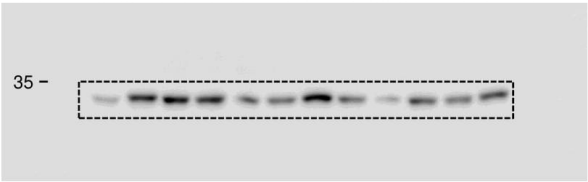
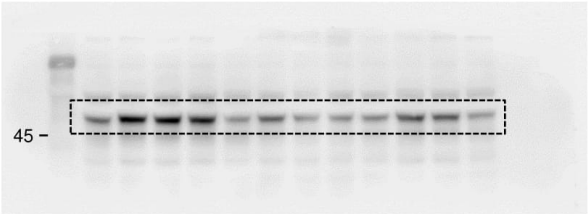


Figure 4C

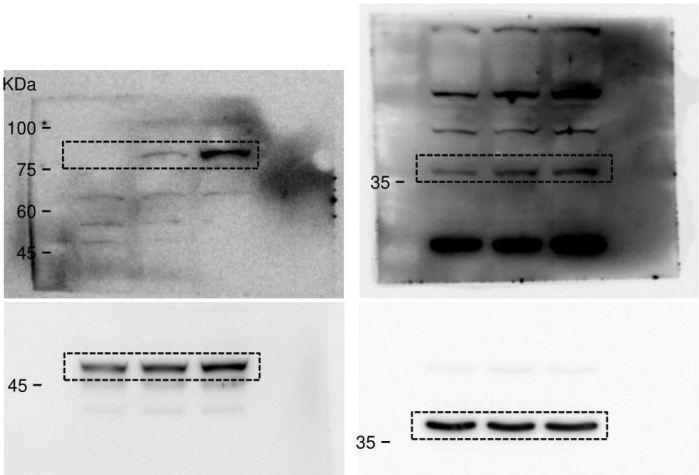


Figure 5A

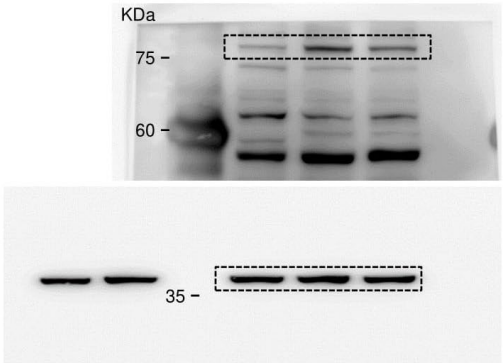


Figure 5D

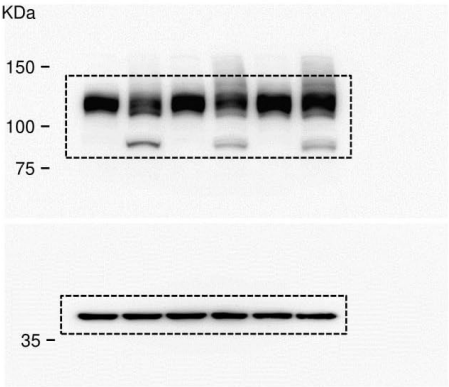


Figure 6E

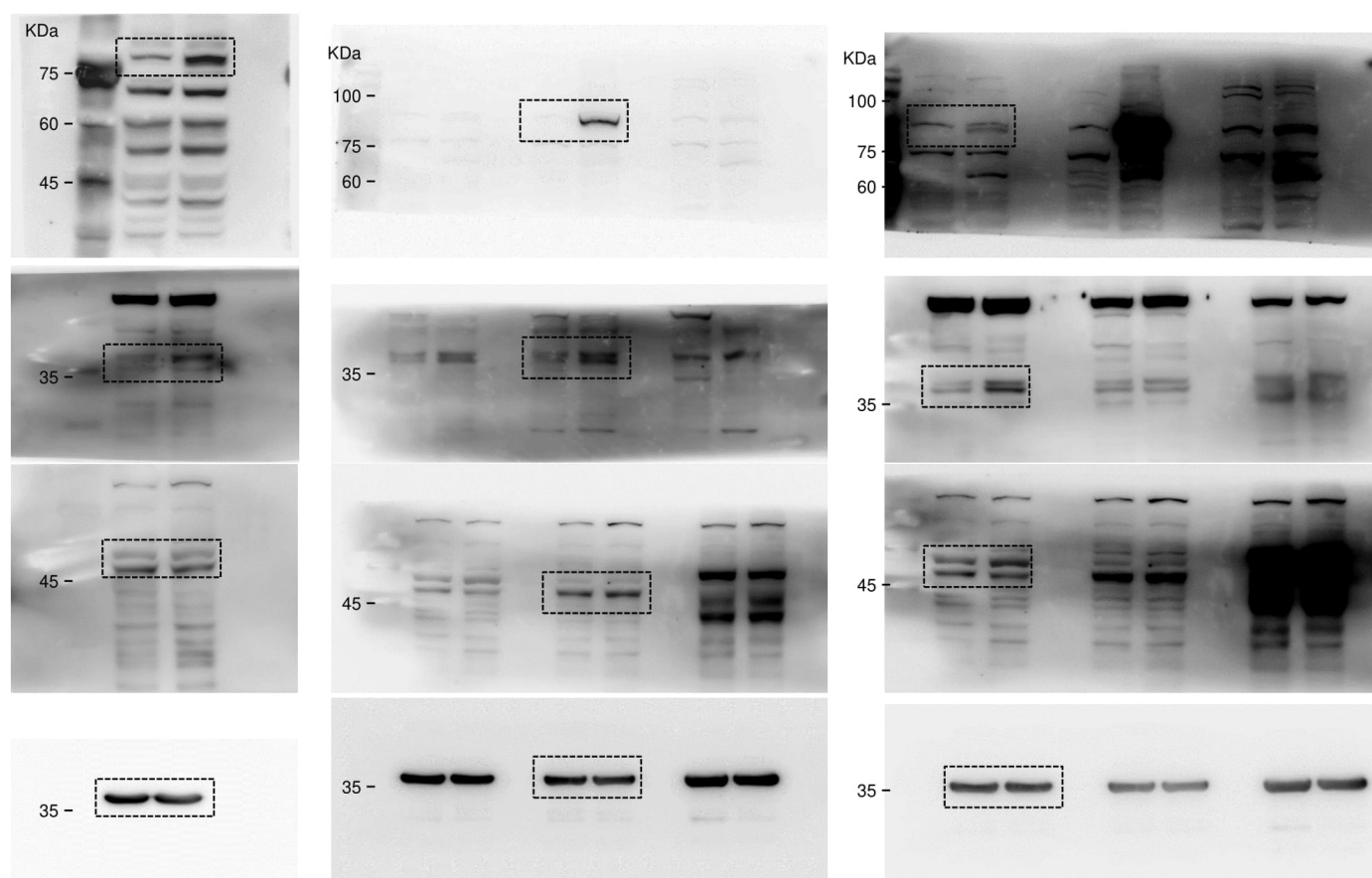


Figure 7

Figure S3. Full length blots cropped for representative figures.