

Long-Term Outcomes of a Randomized Study of Neoadjuvant Induction Dual HER2 Blockade with Trastuzumab and Lapatinib Followed by Weekly Paclitaxel Plus Dual HER2 Blockade for HER2-Positive Primary Breast Cancer (Neo-Lath Study)

Eriko Tokunaga, Norikazu Masuda, Naohito Yamamoto, Hiroji Iwata, Hiroko Bando, Tomoyuki Aruga, Shoichiro Ohtani, Tomomi Fujisawa, Toshimi Takano, Kenichi Inoue, Nobuyasu Suganuma, Masahiro Takada, Kenjiro Aogi, Kenichi Sakurai, Hideo Shigematsu, Katsumasa Kuroi, Hironori Haga, Shinji Ohno, Satoshi Morita and Masakazu Toi

Supplementary Material

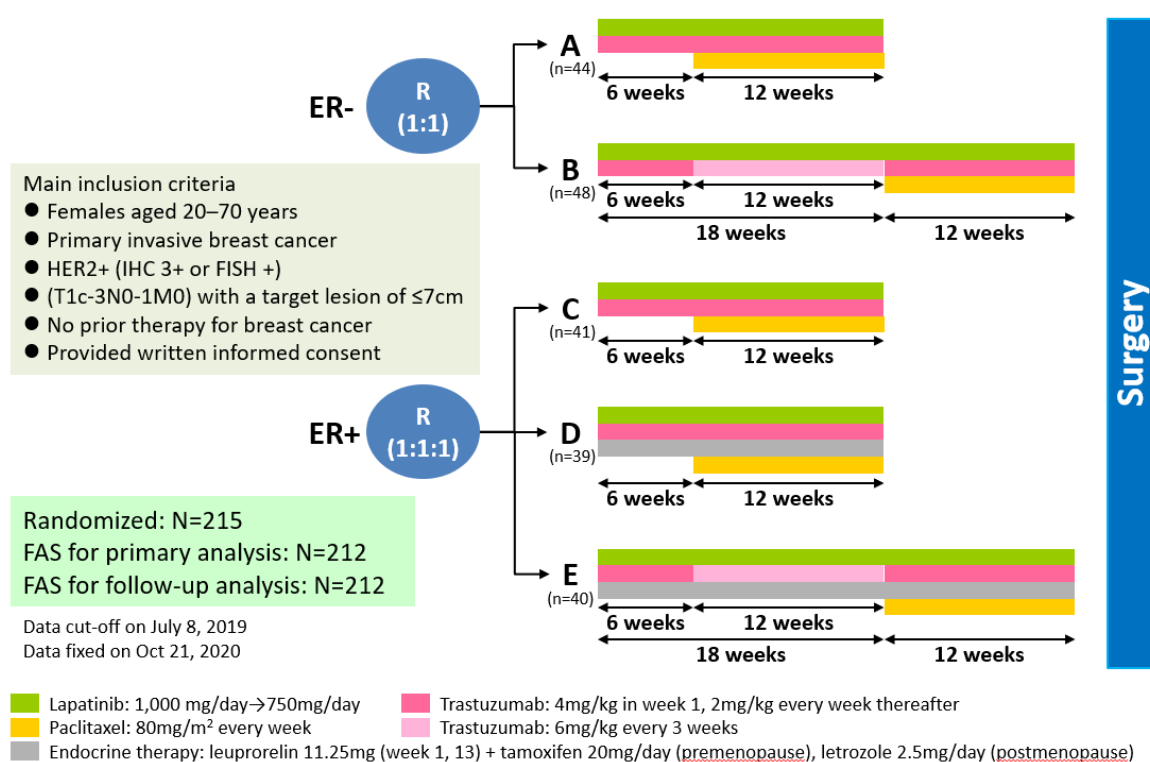
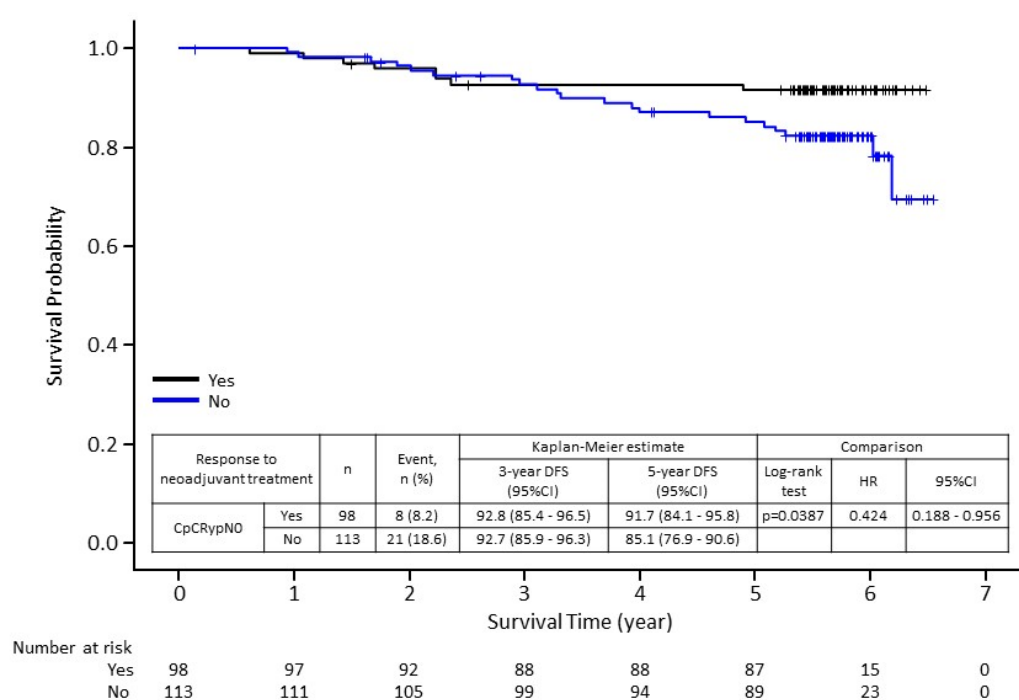
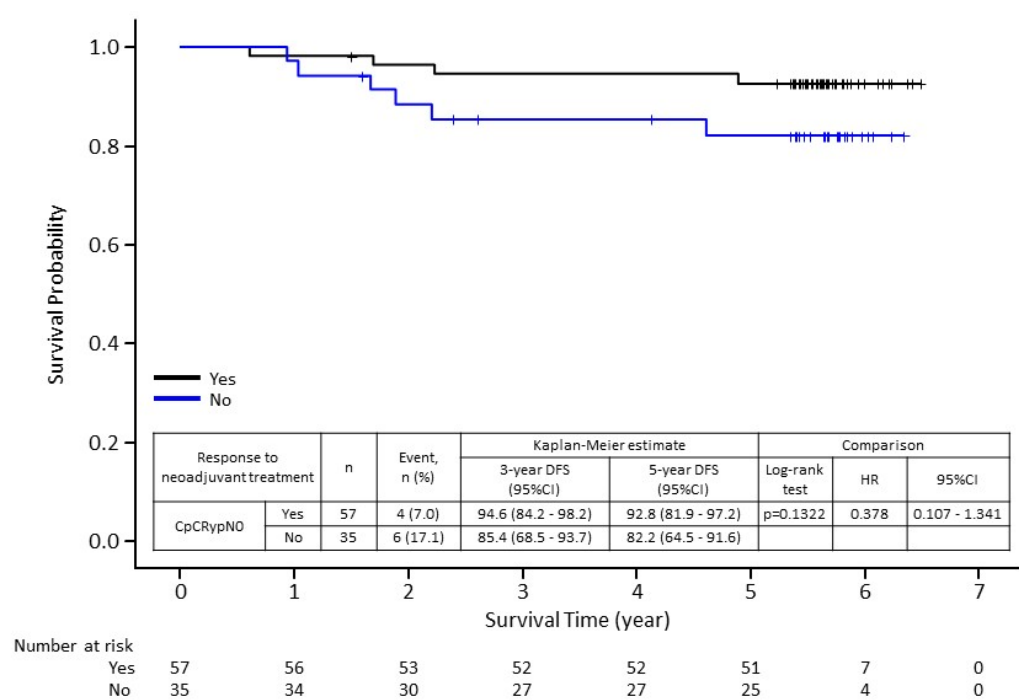


Figure S1. Study design of the Neo-LaTH study. ER, estrogen receptor; FAS, full analysis set; FISH, fluorescence in situ hybridization; HER, human epidermal growth factor receptor; IHC, immunohistochemistry.

A**B**

C

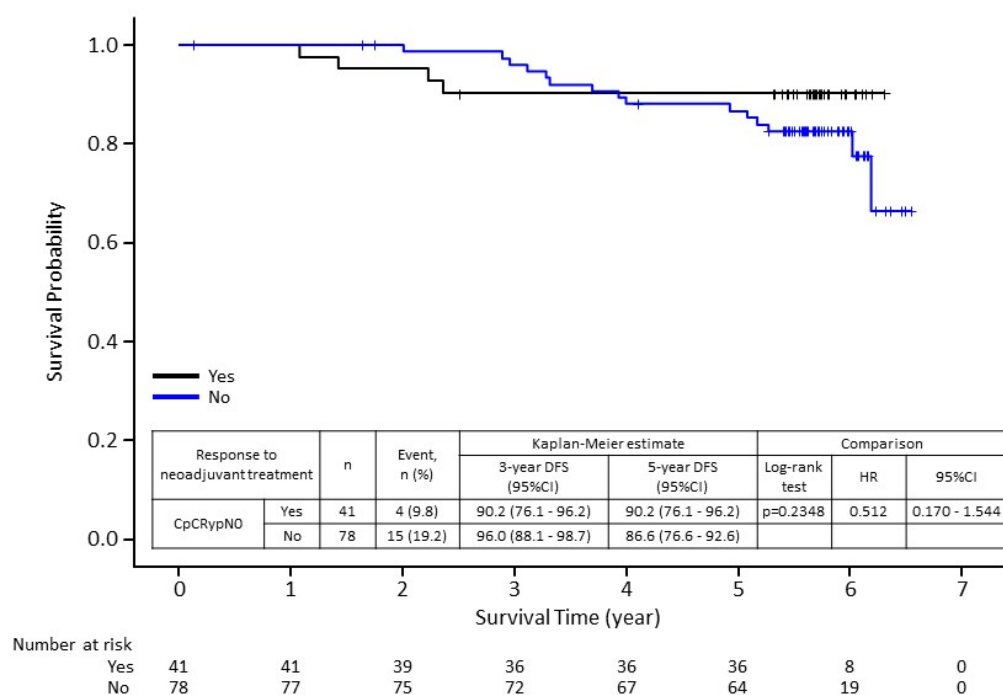


Figure S2. Kaplan–Meier curves of disease-free survival (DFS) stratified by response to neoadjuvant treatment (with or without CpCRypN0): A. all patients ($n = 211$), B. estrogen receptor (ER)-negative patients ($n = 92$), and C. ER-positive patients ($n = 119$). CI, confidence interval; CpCRypN0, comprehensive pathological complete response with a pathologically negative axilla; HR, hazard ratio.

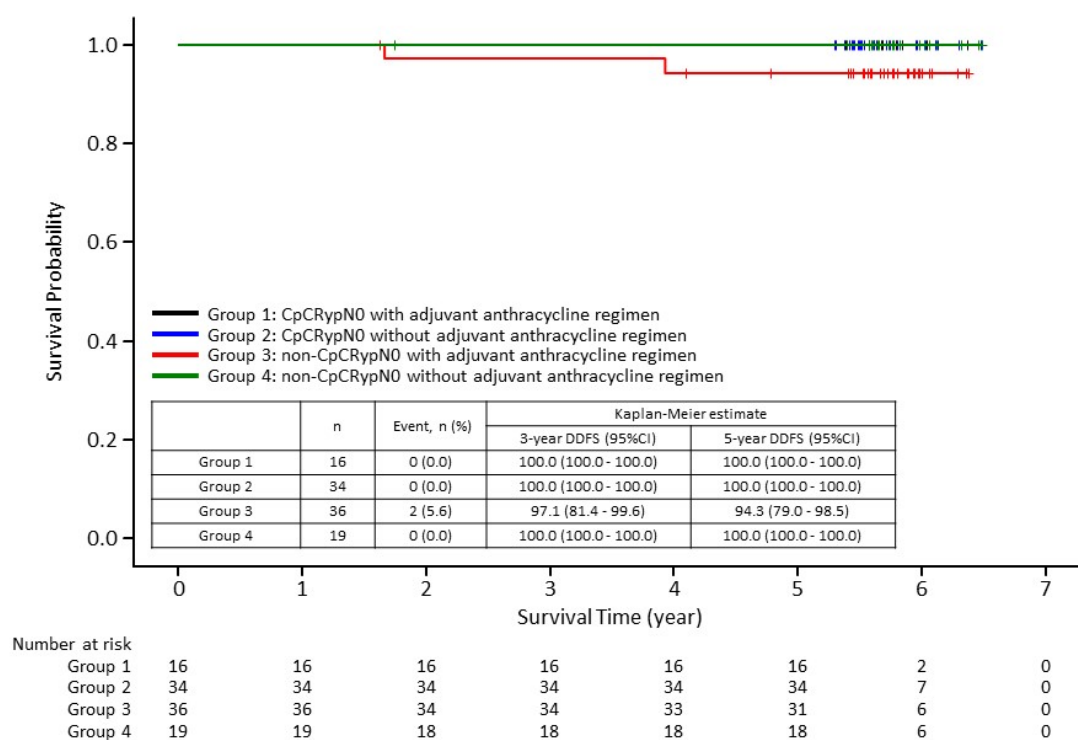


Figure S3. Kaplan–Meier curves of distant disease-free survival (DDFS) in patients with T1cT2N0 stratified by response to neoadjuvant treatment (with or without CpCRypN0) and with or without use of adjuvant anthracycline in all patients ($n = 105$). CI, confidence interval. CpCRypN0, comprehensive pathological complete response with a pathologically negative axilla.