

Figure S1

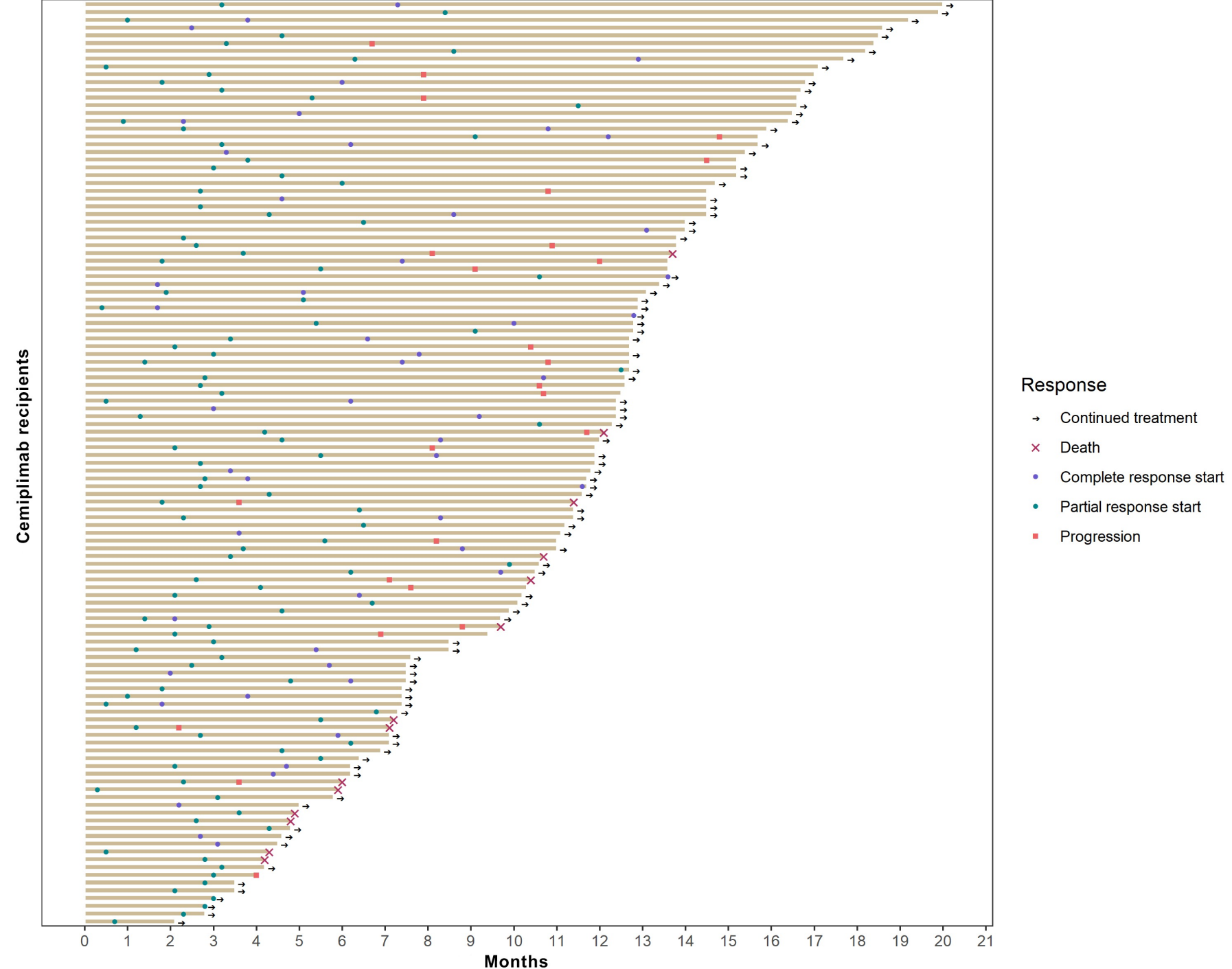


Table S1: Therapies given to the 245 intent-to-treat patients before cemiplimab

Prior Treatments	Value
Radiotherapy	144 (60)
Surgery	193 (79)
Previous systemic treatment	121 (49)
Pre-cemiplimab line(s) of systemic treatment(s)/121	
1	93 (77)
2	19 (16)
3	8 (7)
4	1 (0.8)
Median duration of systemic treatment, months (range)	4 (0–65)
Systemic treatments administered/121	
Single chemotherapy	9 (7)
Combined chemotherapies	29 (24)
Chemotherapy plus radiotherapy	15 (12)
Anti-EGFR antibody	31 (26)
Anti-EGFR antibody plus radiotherapy	9 (7)
Anti-EGFR antibody plus chemotherapy	46 (38)
Anti PD-1	5 (4)
Others <sup>a</sup>	7 (6)

Results are expressed as number (%), unless stated otherwise.

EGFR, epidermal growth factor receptor; PD-1, programmed cell-death protein-1

<sup>a</sup> Other treatments included: intratumoral bleomycin, 2; 1 each: combination chemotherapy, anti-EGFR and radiotherapy, anti-EGFR and imiquimod, vismodegib, paclitaxel and interferon followed by sorafenib, or unknown.