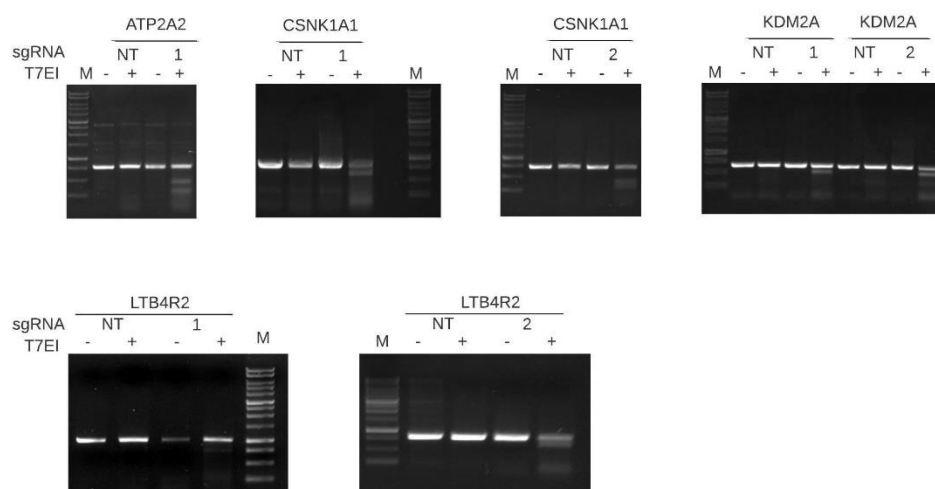
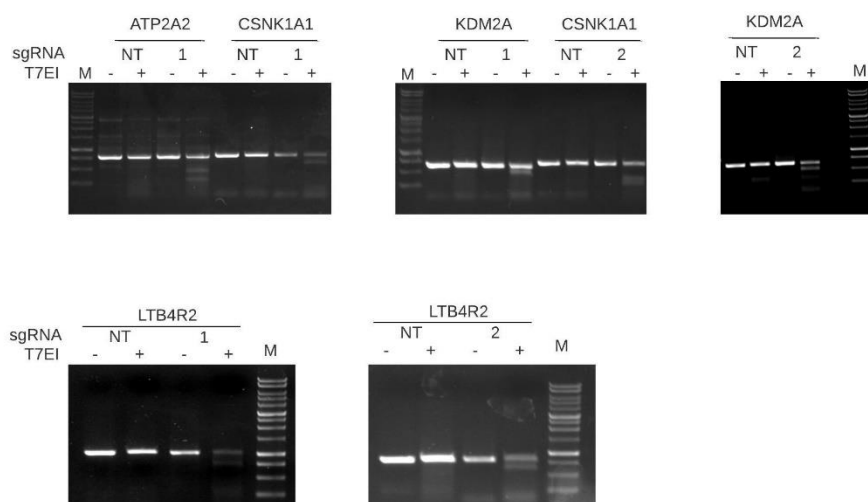


**A**

NCI-H23

**B**

A549

**Figure S1: Evaluation of CRISPR/Cas9-mediated genetic modification**

A) Agarose gel runs showing Alt-R mismatch analysis in NCI-H23/Cas9 cells infected with the indicated sgRNAs. As negative control (CT), NCI-H23/Cas9 cells infected with a non-targeting (NT) sgRNA were used. The addition of T7 endonuclease I (T7EI) is indicated over each lane. M indicates a molecular weight marker in the range of 100bp-1kb. B) Agarose gel runs showing Alt-R mismatch analysis in A549/Cas9 cells infected with the indicated sgRNAs. As negative control (CT), A549/Cas9 cells infected with a non-targeting (NT) sgRNA were used. The addition of T7 endonuclease I (T7EI) is indicated over each lane. M indicates a molecular weight marker in the range of 100bp-1kb.