

A Novel benzopyrane derivative targeting cancer cell metabolic and survival pathways

Dana M. Zaher^{1,2,#}, Wafaa S. Ramadan^{1,2,#}, Raafat El-Awady^{1,3}, Hany A. Omar^{1,3,4}, Fatema Hersi^{1,2}, Vunnam Srinivasulu¹, Ibrahim Y. Hachim^{1,2}, Farah I. Almarzooq^{1,5}, Cijo G. Vazhappilly^{1,6}, Salim Merali⁷, Carmen Merali⁷, Nelson C. Soares^{1,3}, Paul Schilf⁸, Saleh M. Ibrahim^{1,2,8}, Taleb H. Al-Tel^{1,3,*}

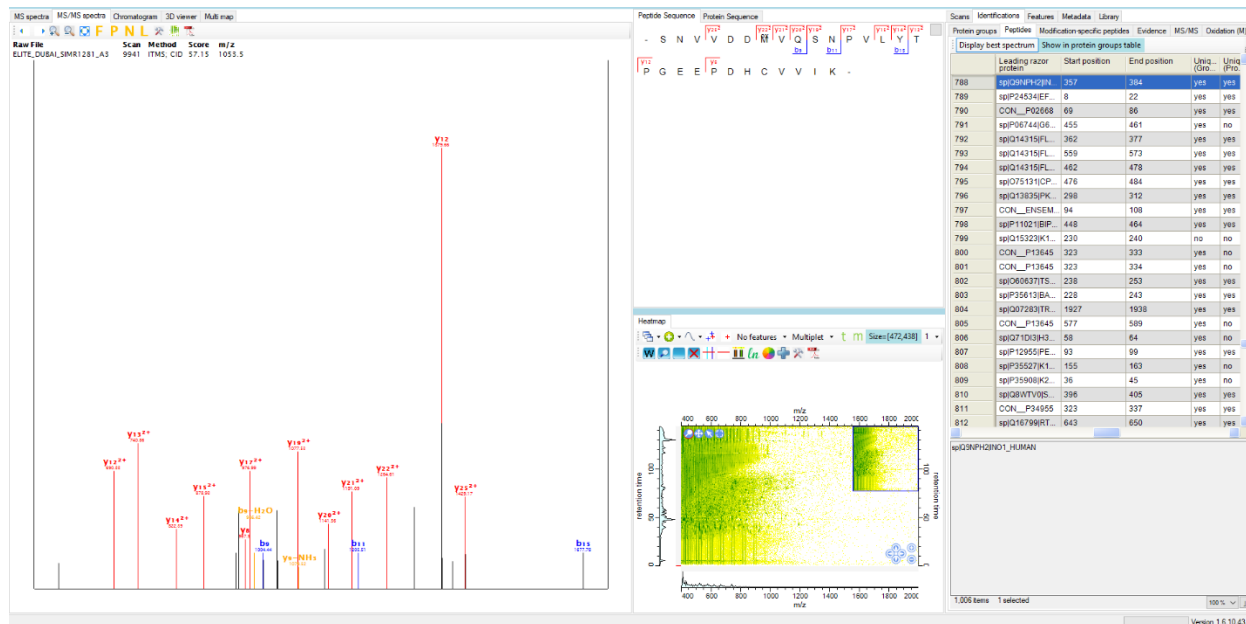
*Correspondance: taltal@sharjah.ac.ae, Tel: +97165057417

These coauthors contributed equally to this work and are both first authors

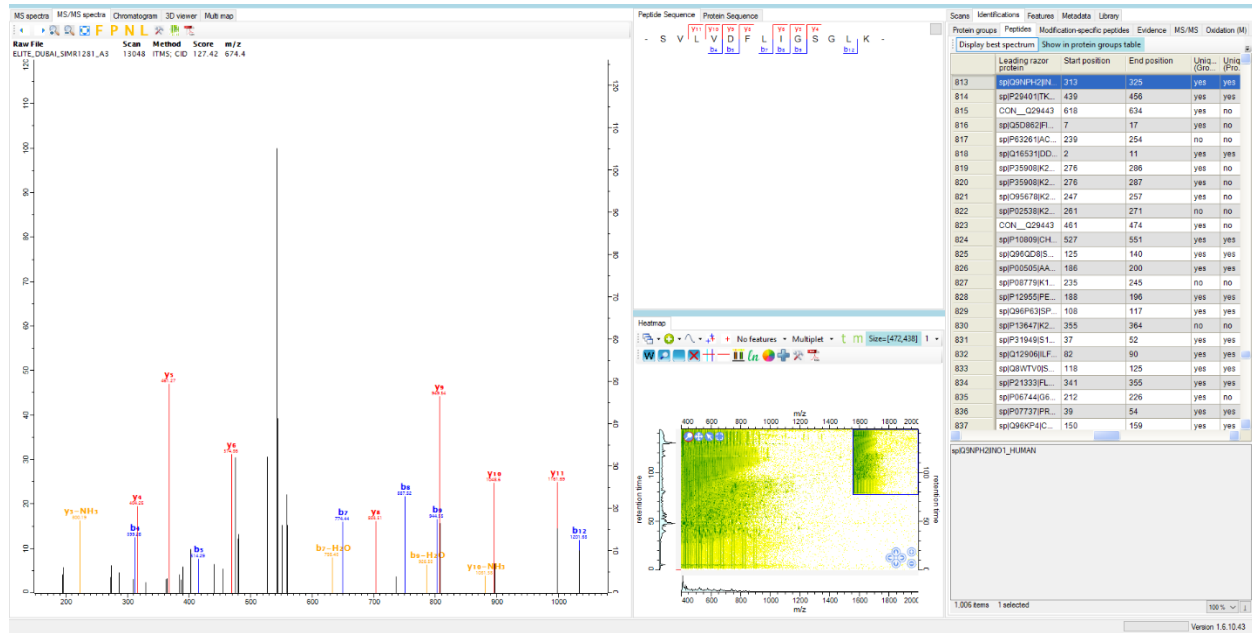
Supplementary file S2.

The MS/MS spectra of assigned to the identified peptides for each reported protein. Images were obtained from Maxquant viewer version (1.6.10.43)

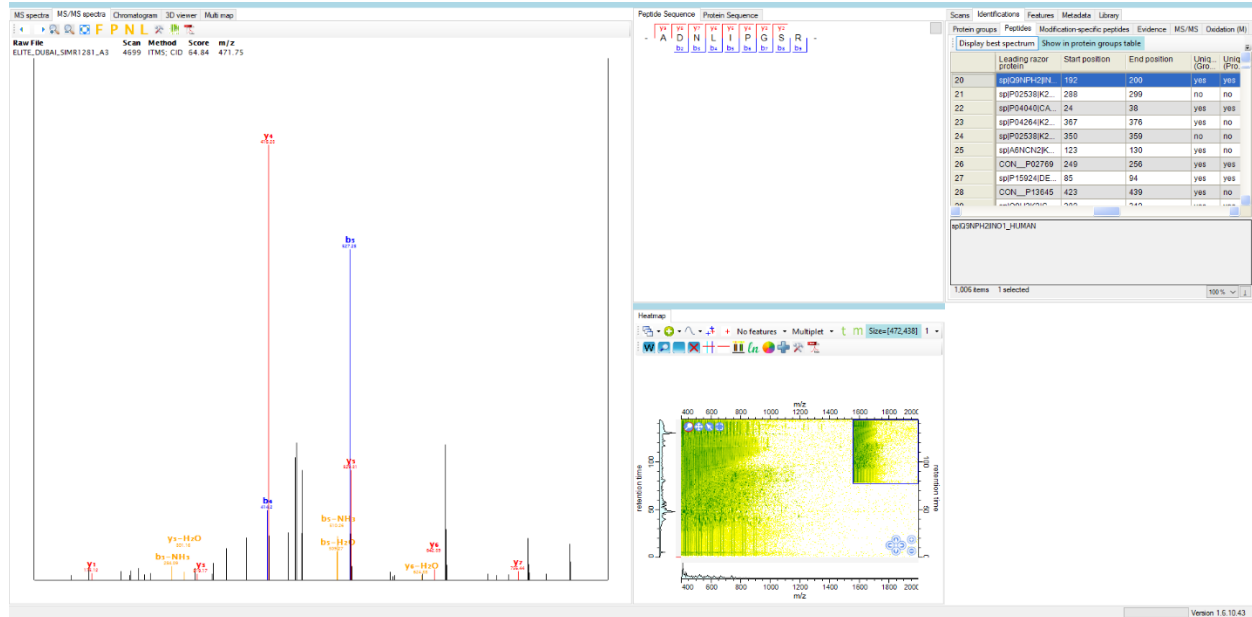
sp|Q9NPH2|INO1_HUMAN Inositol-3-phosphate synthase 1



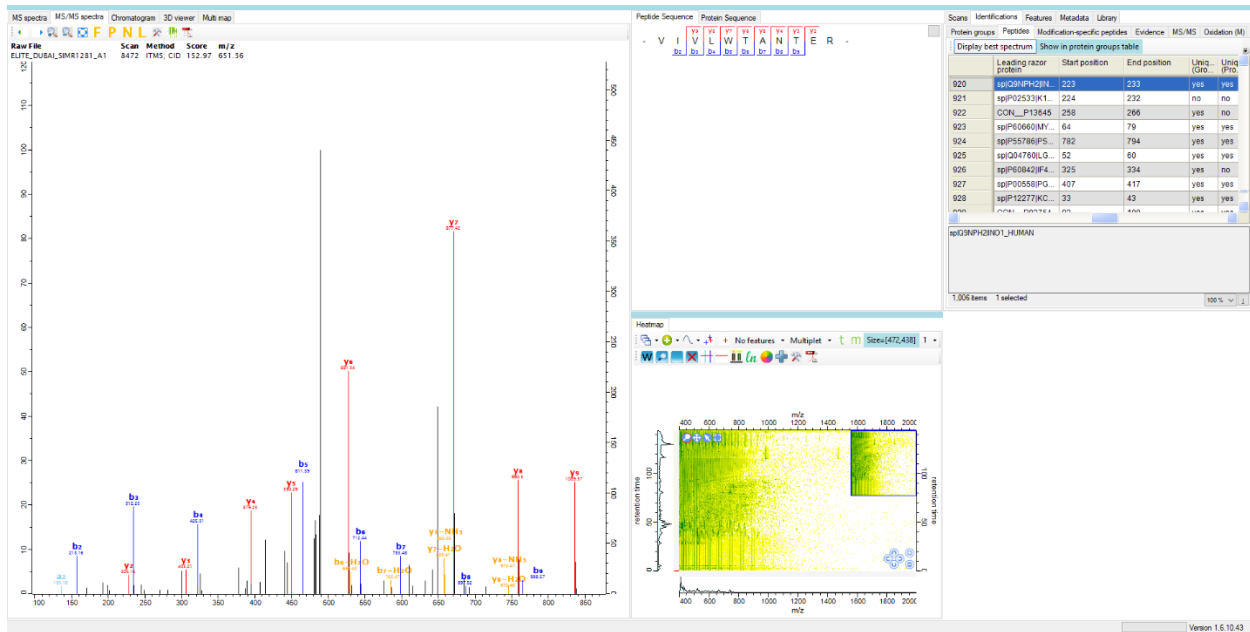
MS/MS fragmentation spectrum show both b- and y-ions of a peptide (SNVDDMVQSNPVLVTPGEEP~~DH~~CVVIK) assigned to sp|Q9NPH2|INO1_HUMAN Inositol-3-phosphate synthase 1



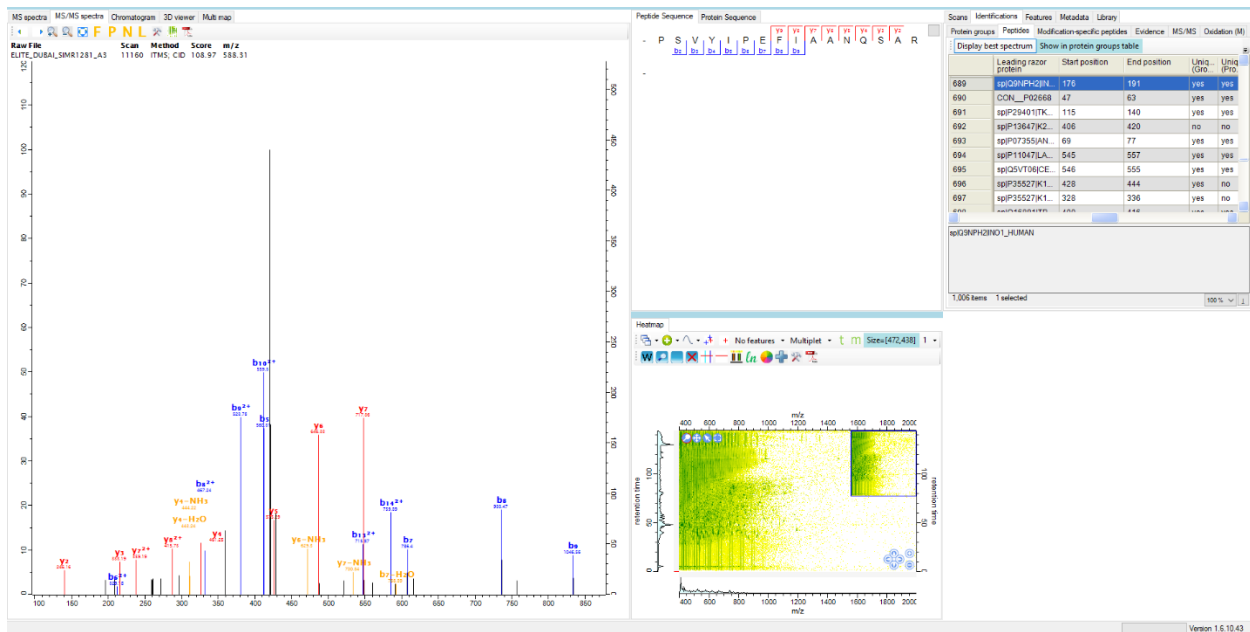
MS/MS fragmentation spectrum show both b- and y-ions of a peptide (SVLVDFLIGSGLK) assigned to sp|Q9NPH2|INO1_HUMAN Inositol-3-phosphate synthase 1



MS/MS fragmentation spectrum show both b- and y-ions of a peptide (ADNLIPGSR) assigned to sp|Q9NPH2|INO1_HUMAN Inositol-3-phosphate synthase 1

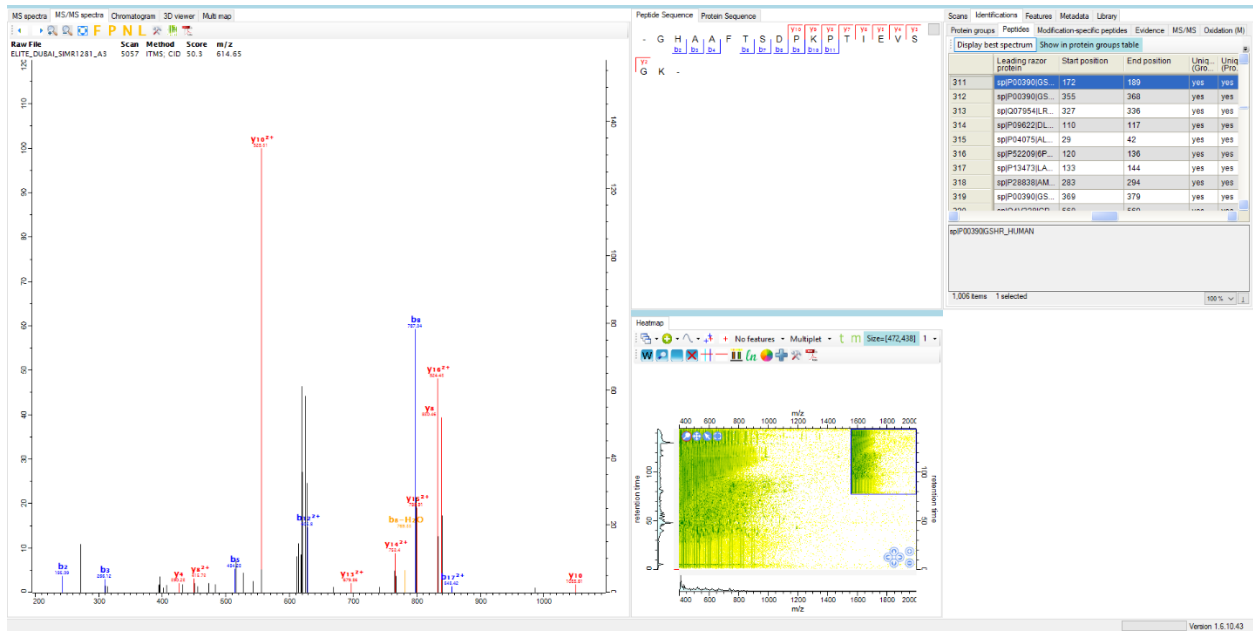


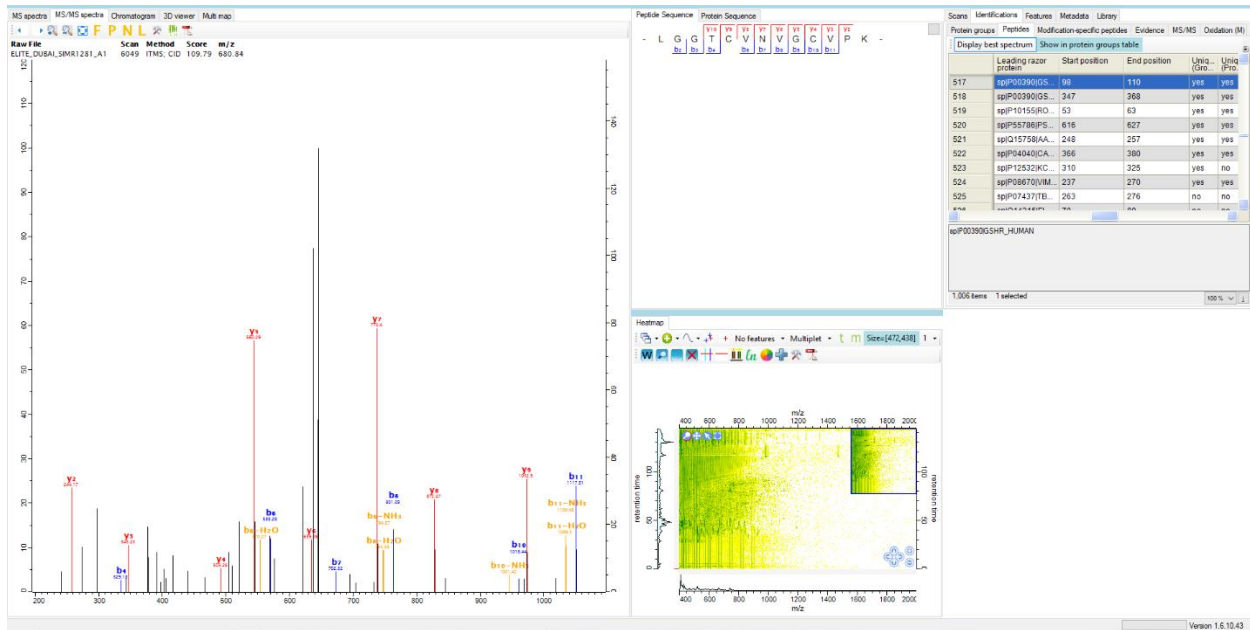
MS/MS fragmentation spectrum show both b- and y-ions of a peptide (**VIVLWTANTER**) assigned to **sp|Q9NPH2|INO1_HUMAN Inositol-3-phosphate synthase 1**



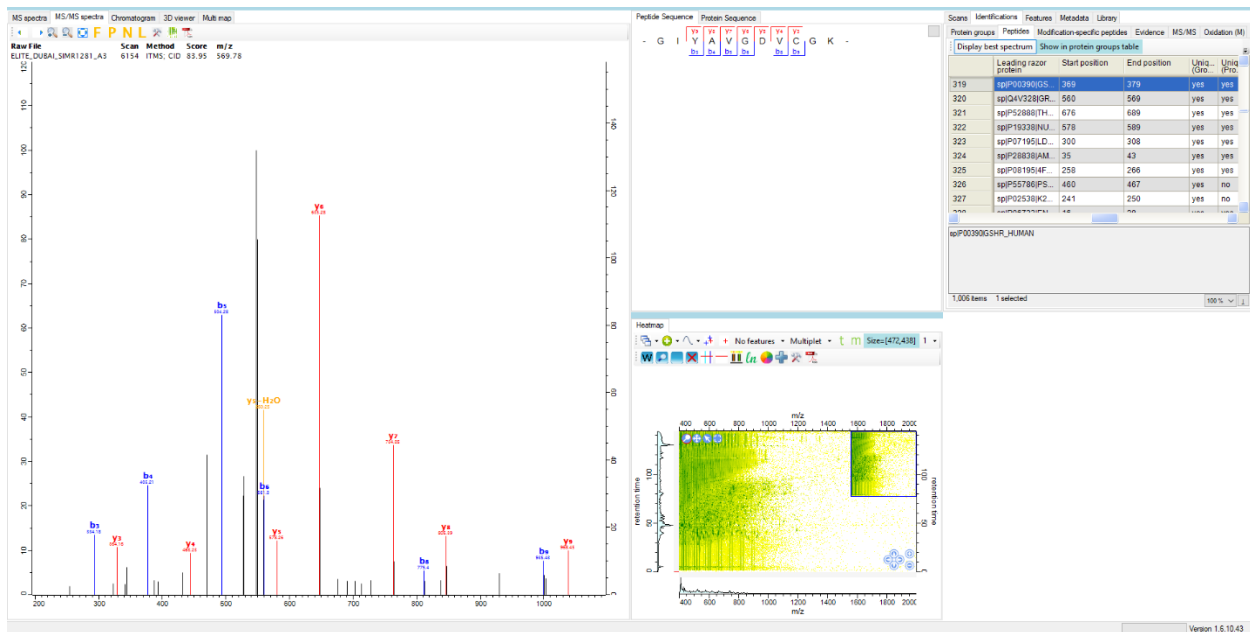
MS/MS fragmentation spectrum show both b- and y-ions of a peptide (**PSVYIPEFIAANQSAR**) assigned to **sp|Q9NPH2|INO1_HUMAN Inositol-3-phosphate synthase 1**

sp|P00390|GSHR_HUMAN Glutathione reductase 1, mitochondrial

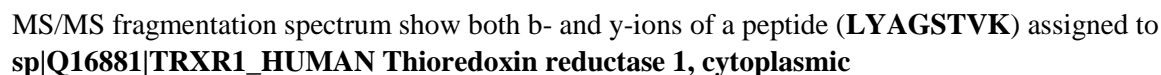


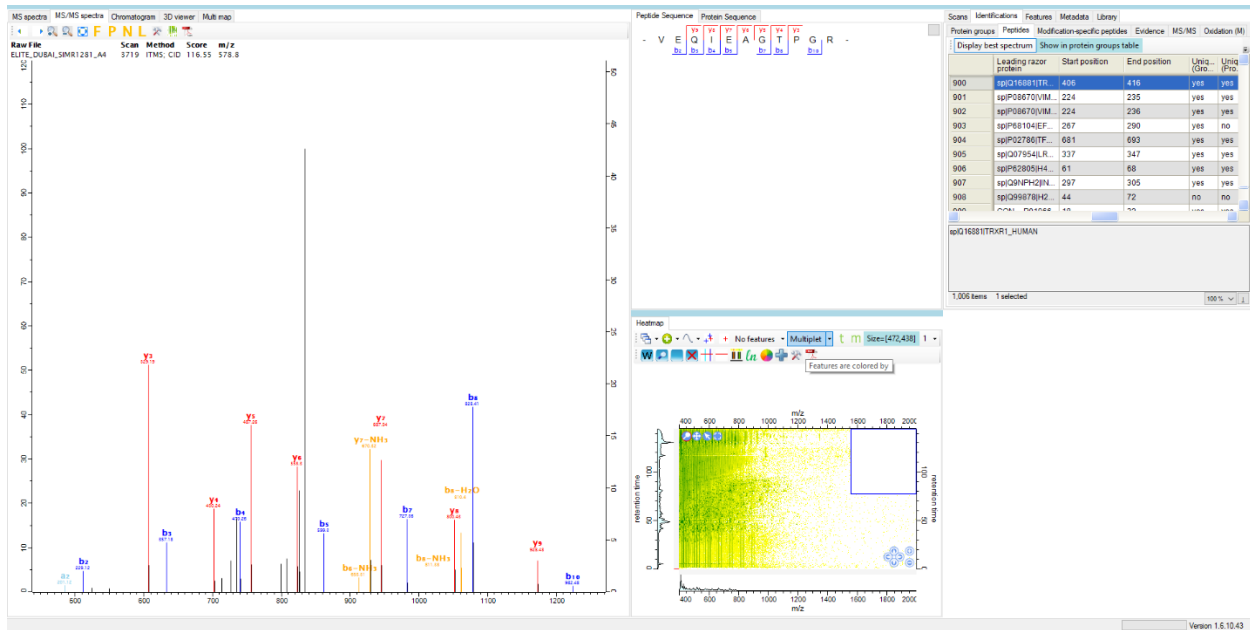


MS/MS fragmentation spectrum show both b- and y-ions of a peptide (**LGGTCVNVGCVPK**) assigned to **sp|P00390|GSHR_HUMAN** Glutathione reductase 1, mitochondrial

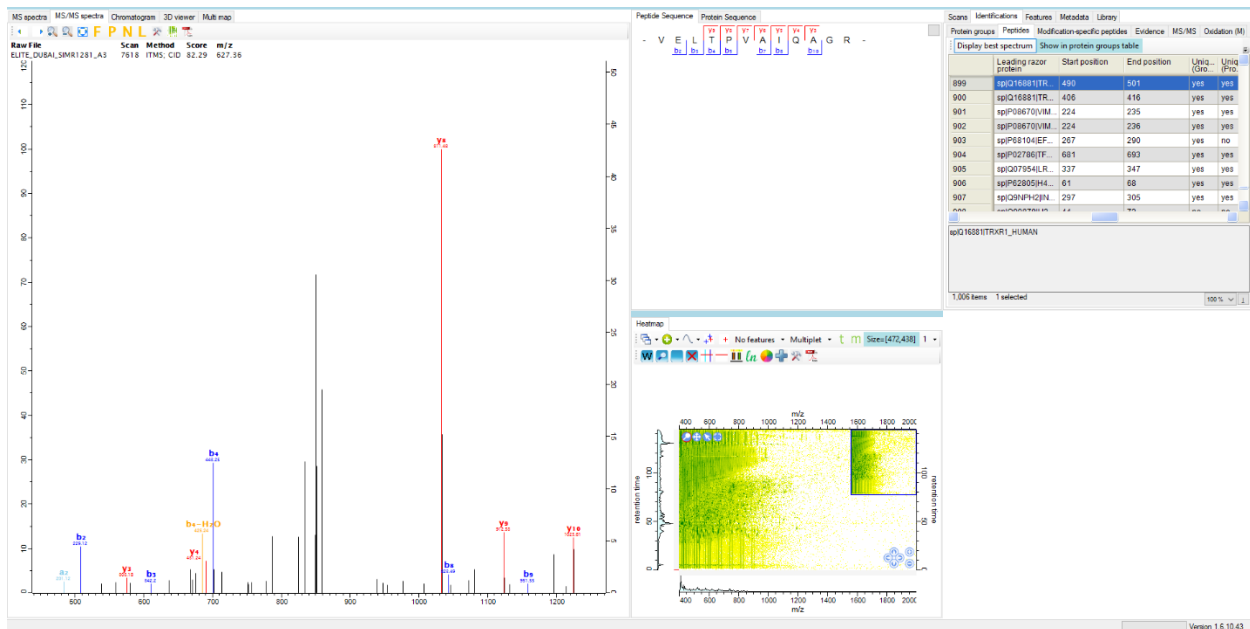


MS/MS fragmentation spectrum show both b- and y-ions of a peptide (**GIYAVGDCGK**) assigned to **sp|P00390|GSHR_HUMAN** Glutathione reductase 1, mitochondrial

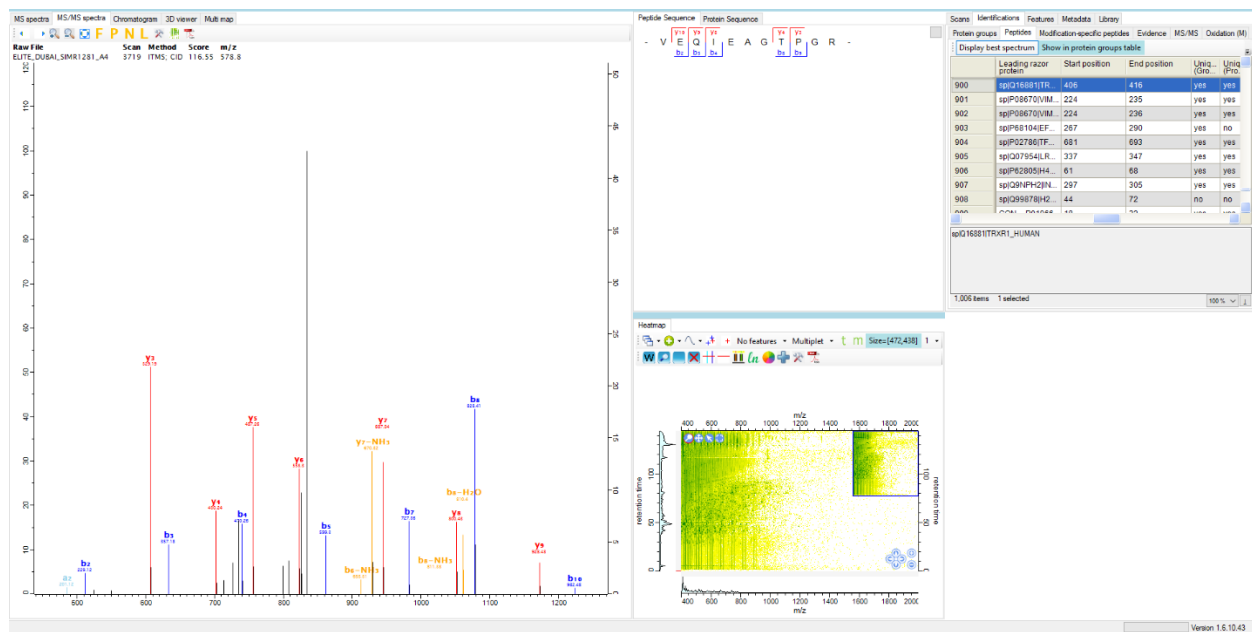




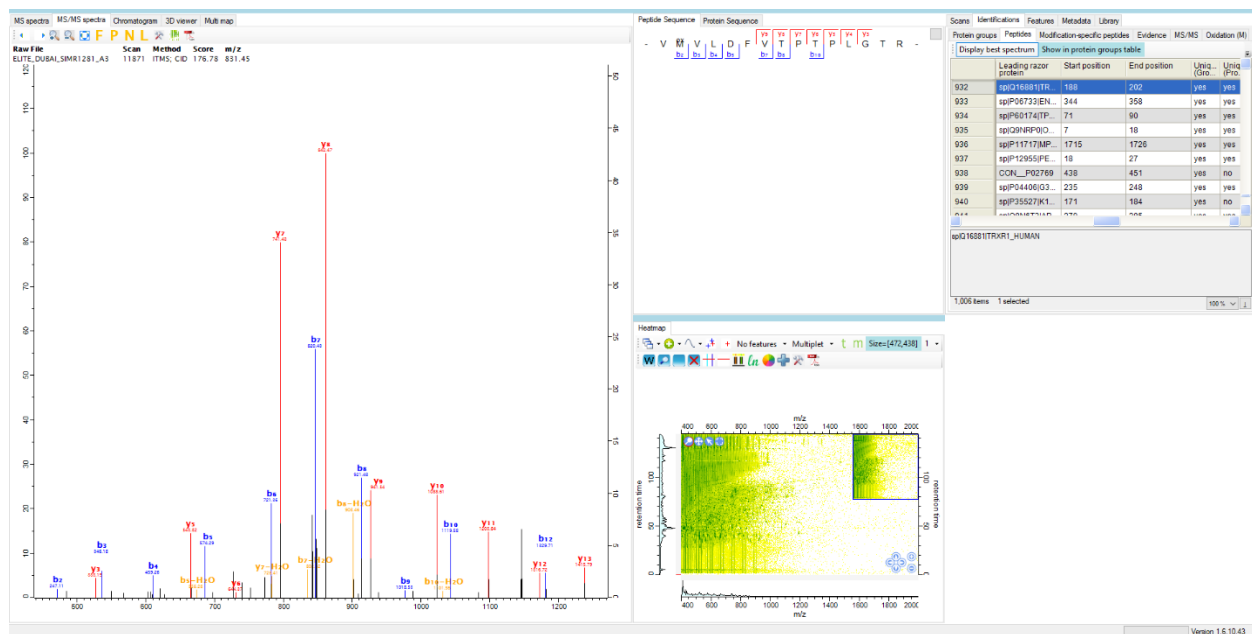
MS/MS fragmentation spectrum show both b- and y-ions of a peptide (**VEQIEAGTPGR**) assigned to **sp|Q16881|TRXR1_HUMAN** Thioredoxin reductase 1, cytoplasmic



MS/MS fragmentation spectrum show both b- and y-ions of a peptide (**VELTPVAIQAGR**) assigned to **sp|Q16881|TRXR1_HUMAN** Thioredoxin reductase 1, cytoplasmic



MS/MS fragmentation spectrum show both b- and y-ions of a peptide (**VEQIEAGTPGR**) assigned to **sp|Q16881|TRXR1_HUMAN Thioredoxin reductase 1, cytoplasmic**



MS/MS fragmentation spectrum show both b- and y-ions of a peptide (**VMVLDFVTPTPLGTR**) assigned to **sp|Q16881|TRXR1_HUMAN Thioredoxin reductase 1, cytoplasmic**