

Fig 3A	M8	actin	ratio	
1	3270.983	4874.062	0.6711	1.00
2	805.406	7441.912	0.108226	0.16
3	442.042	7151.912	0.061808	0.09
4	719.991	6025.418	0.119492	0.18
5	611.184	4747.305	0.128743	0.19
6	276.506	4674.669	0.05915	0.09

Fig 3B	M8GFP	actin	r
1	89.364	3767.456	0.02372
2	5794.418	3257.92	1.778564

Fig 4B	caspase	M8	actin	r caspase	r M8
1	0	0	5822.648	0	0
2	3079.619	0	6593.255	0.467086	0
3	3417.698	0	5545.234	0.616331	0
4	0	14501.95	5833.184	0	2.486111
5	5576.598	14800.14	6098.012	0.914494	2.427043
6	8839.548	15081.87	7625.255	1.159246	1.977885

Fig 5A	CD44	BAX	BID	M8 GFP	actin	rCD44	rBAX	rBID	rM8
1	6914.477	705.456	2114.406	0	6618.962	1.044647	0.106581	0.319447	0
2	740.092	3315.698	7144.548	11391.36	6821.305	0.108497	0.48608	1.047387	1.669968
		?							

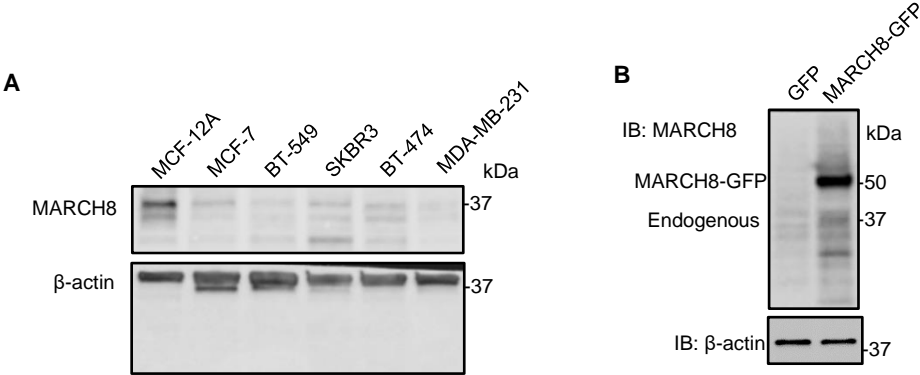
Fig 5D	CD44	M8 GFP	actin	rCD44	rM8
1	13473.95	0	11803.23	1.141548	0
2	2422.619	13435.97	11520.23	0.210293	1.166294
3	757.698	16158.85	9951.033	0.076143	1.623837
4	11117.49	15158.15	9927.397	1.11988	1.5269

Fig 5F	BAX	BID	CD44	M8 GFP	actin	rBAX	rBID	rCD44	rM8
1	0	0	14085.59	0	11198.98	0	0	1.257756	0
2	4456.184	5317.426	7682.569	15020.71	11757.4	0.379011	0.452262	0.653424	1.277554
3	3115.355	3088.184	11488.71	13698.39	12167.05	0.256048	0.253815	0.944248	1.125859

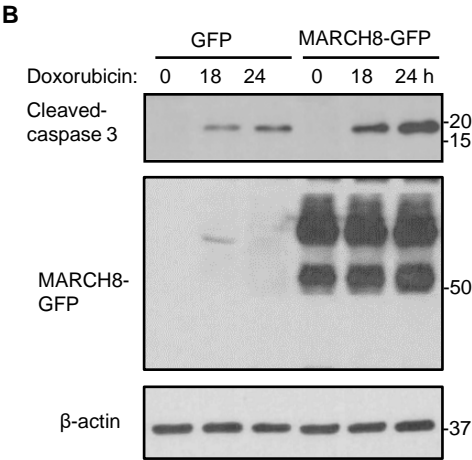
Fig 6A	AKT	pAKT	ERK	pERK	actin	rAKT	rpAKT	rERK	rpERK
1	3435.983	7772.447	5498.782	7988.69	7385.962	0.465205	1.052327	0.744491	1.081605
2	3351.912	6541.497	5655.368	9790.518	7433.962	0.450892	0.879948	0.760747	1.316999
3	2867.548	8129.347	5978.371	7238.569	6819.426	0.420497	1.192087	0.876668	1.061463
4	7254.033	6757.912	5421.974	7994.933	6345.962	1.143094	1.064915	0.854397	1.259846

Fig 6D	CD44 A	CD44 S	STAT A	STAT S	BID A	BID S	BAX A	BAX S	actin A	actin S
1	9219.397	7136.79	5697.184	5730.305	0	0	0	0	7641.598	7323.891
2	4995.669	3162.891	6904.962	7615.225	4418.113	3794.719	2805.77	4855.941	8360.548	7517.255
3	11841.84	12129.98	7000.548	6121.083	2891.527	1990.355	1403.82	2702.77	8500.497	7562.134
4	2634.134	3884.083	6625.255	6131.79	2489.698	1797.527	1747.698	1882.355	8622.912	7972.305
5	3564.548	2458.012	10346.18	10092.49	1250.406	847.82	1201.82	816.163	8732.326	6897.305
6	3820.669	1124.234	7323.447	5435.255	4386.648	3945.698	5184.527	2633.941	8523.497	7035.719
	rCD44 A	rCD44 S	rSTAT A	rSTAT S	rBID A	rBID S	rBAX A	rBAX S		
1	1.206475	0.974453	0.745549	0.782413	0	0	0	0		
2	0.597529	0.420751	0.825898	1.013033	0.528448	0.504801	0.335596	0.645973		
3	1.393077	1.604042	0.823546	0.809439	0.34016	0.2632	0.165146	0.357408		
4	0.305481	0.487197	0.768332	0.769136	0.288731	0.225471	0.202681	0.236112		
5	0.408201	0.356373	1.184813	1.463251	0.143193	0.12292	0.137629	0.118331		
6	0.448251	0.159789	0.859207	0.772523	0.514654	0.560809	0.608263	0.374367		

**Fig 3. MARCH8 induces apoptosis in TNBC cells**

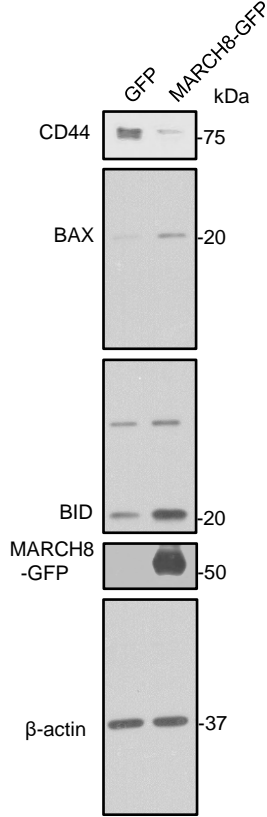


**Fig 4. MARCH8 inhibits colony formation *in vitro* and lung colonization *in vivo***

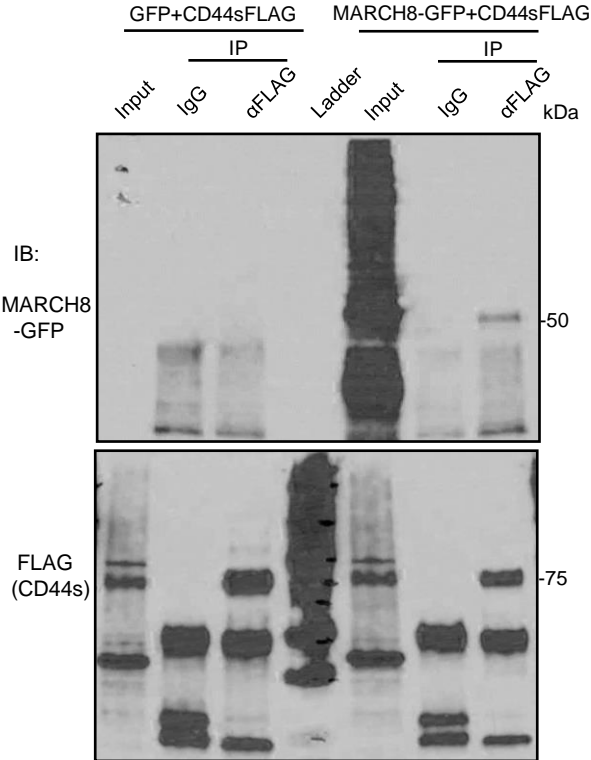


**Fig 5. MARCH8 interacts with and degrades CD44 through the lysosome pathway.**

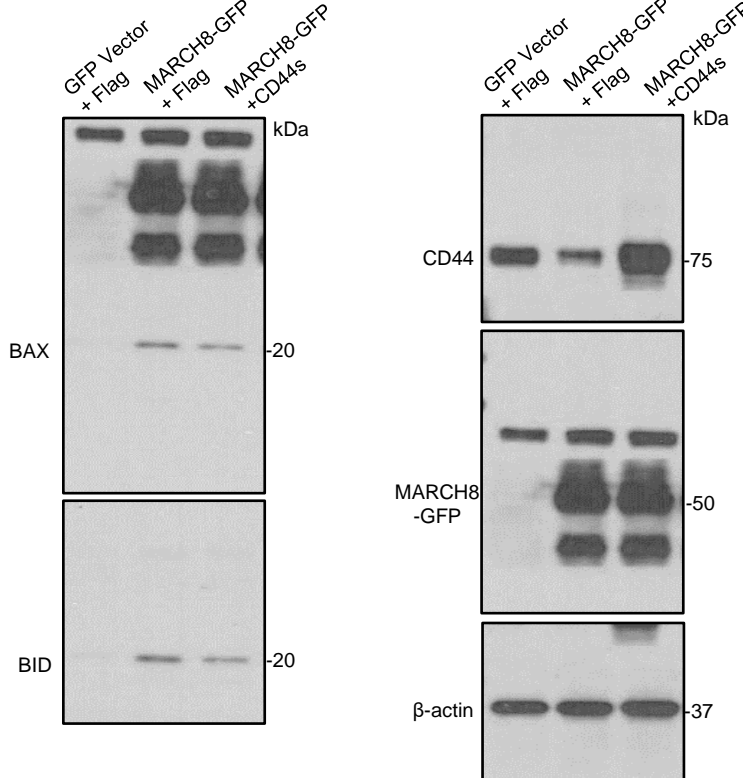
**A**



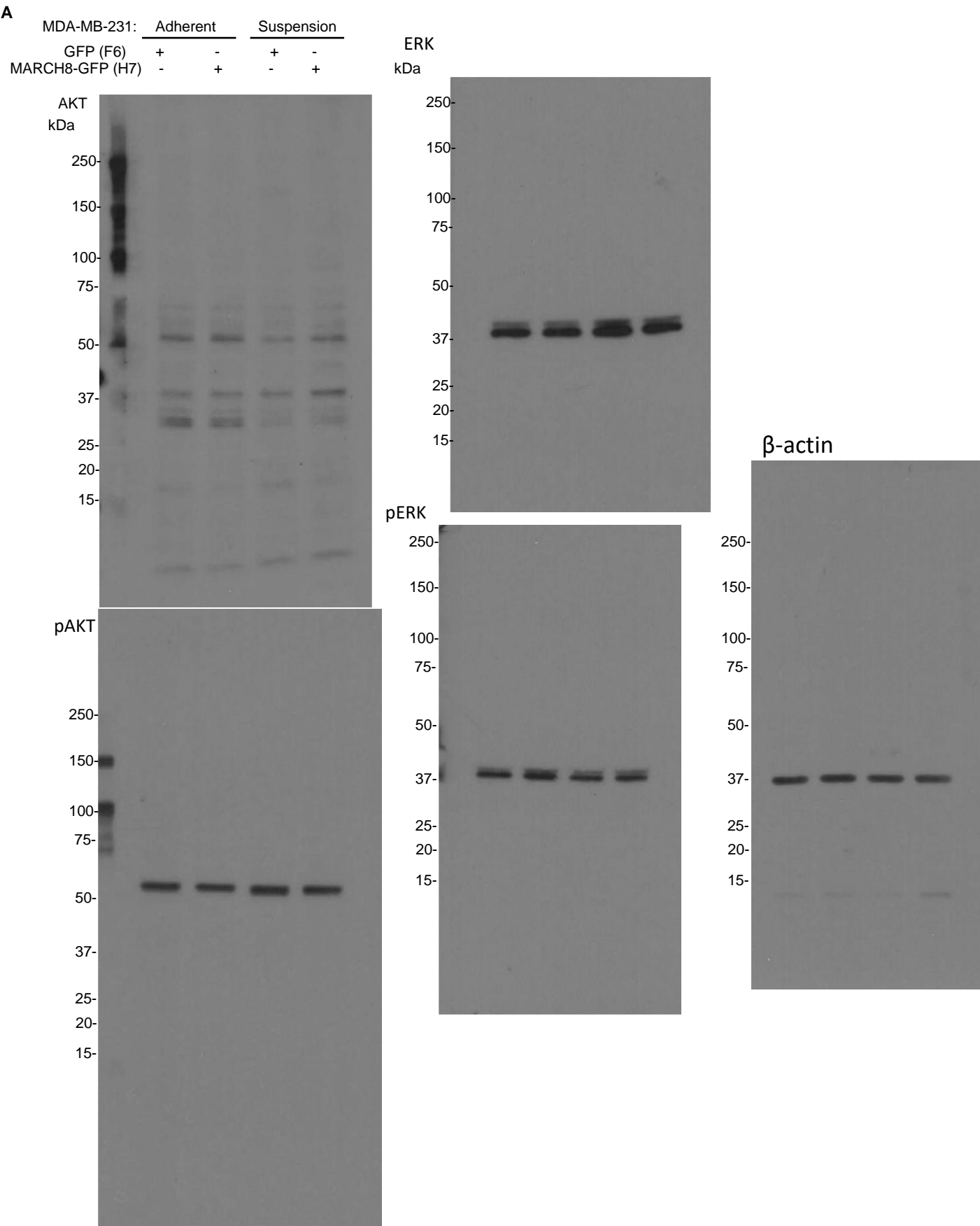
**E** HEK-293 (CLQ)

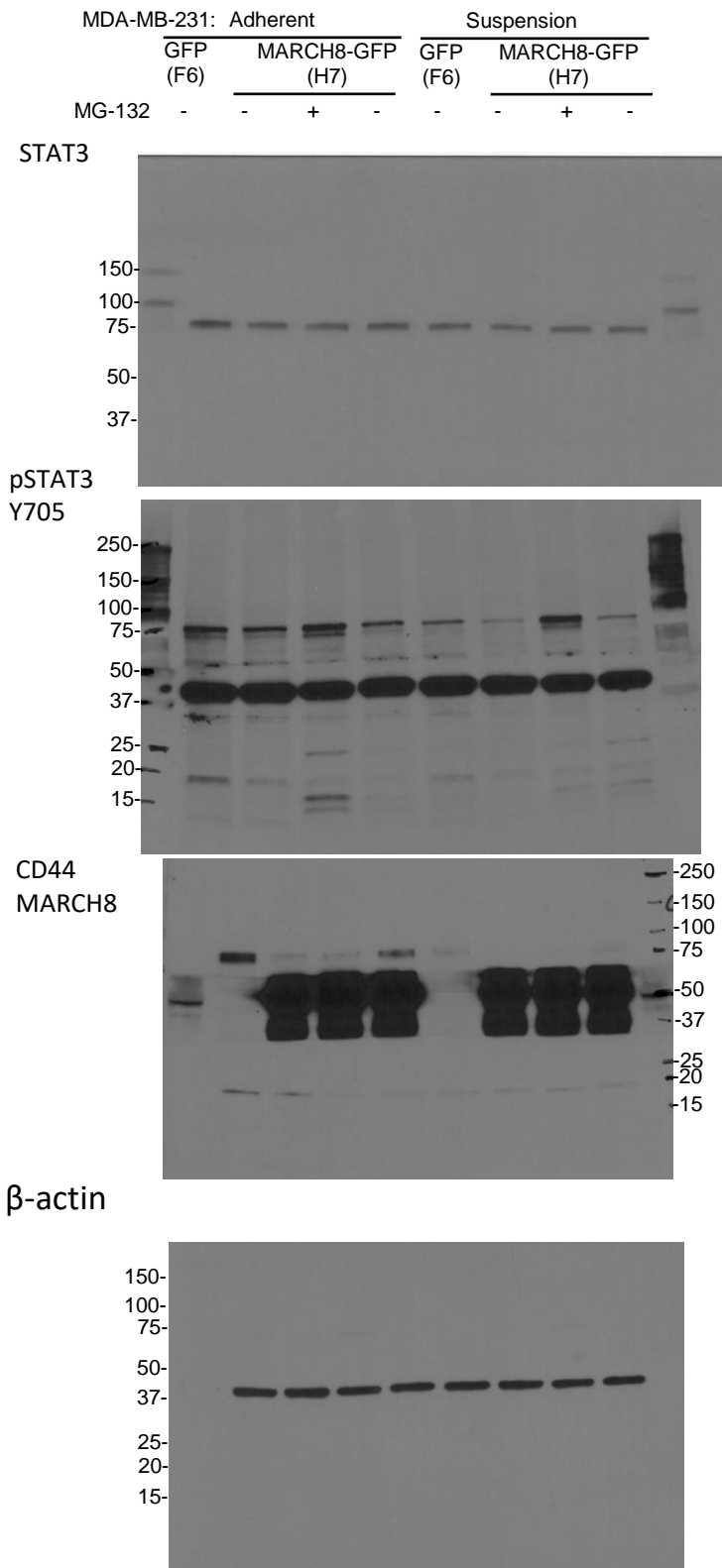


**F**



Full blot for Figure 6



**B**

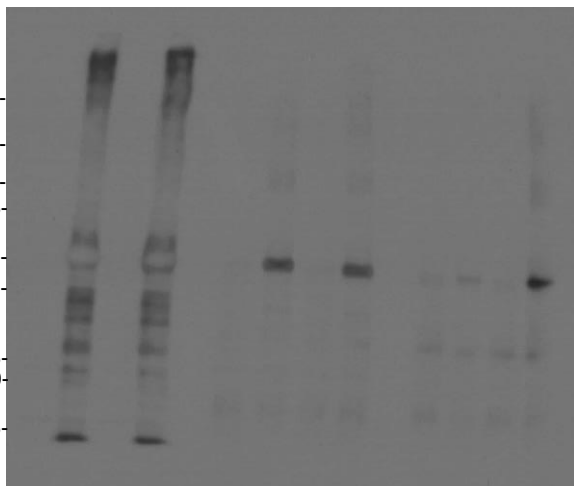
**C**

HEK293 cells + MG-132:

	Input				STAT3 IP				p-STAT3 (Y705) IP			
STAT3 Y705F	-	-	+	+	-	-	+	+	-	-	+	+
GFP	+	-	+	-	+	-	+	-	+	-	+	-
MARCH8-GFP	-	+	-	+	-	+	-	+	-	+	-	+

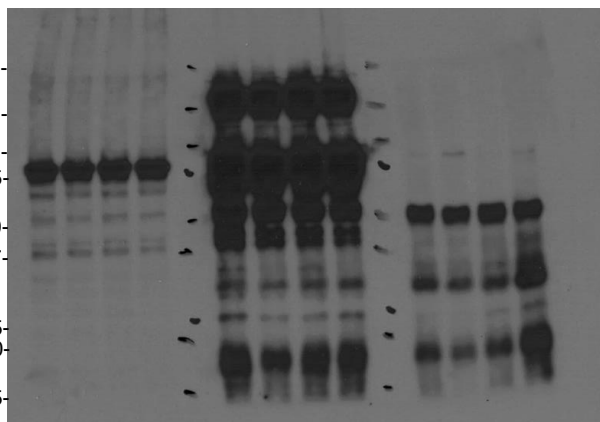
IB: MARCH8

250-  
150-  
100-  
75-  
50-  
37-  
25-  
20-  
15-

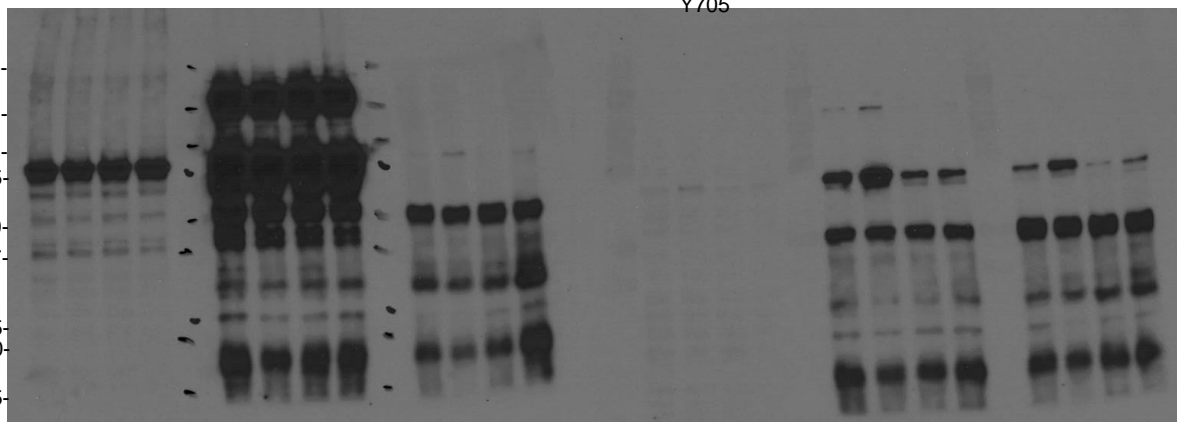


STAT3

250-  
150-  
100-  
75-  
50-  
37-  
25-  
20-  
15-

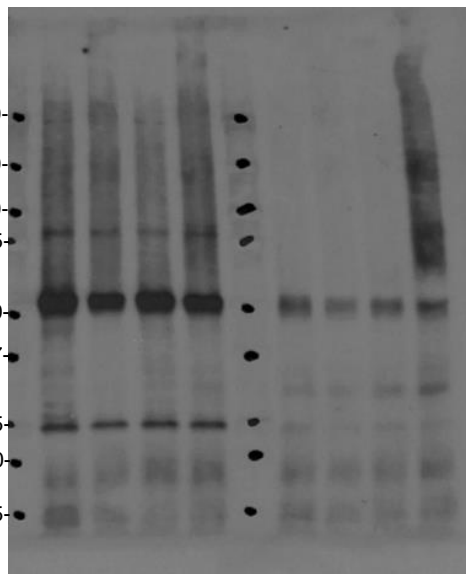


p-STAT3  
Y705



IB: ubiquitin

250-  
150-  
100-  
75-  
50-  
37-  
25-  
20-  
15-



D

MDA-MB-231:	Adherent						Suspension					
GFP	+	+	-	-	-	-	+	+	-	-	-	-
MARCH8-GFP	-	+	+	+	+	+	-	+	+	+	+	+
CD44	-	-	+	-	-	-	-	-	+	-	-	-
STAT3	-	-	-	+	-	-	-	-	-	+	-	-
STAT3 Y705F	-	-	-	-	+	-	-	-	-	-	+	-

kDa

