

Clinical, Pathological and Prognostic Features of Rare BRAF Mutations in Metastatic Colorectal Cancer (mCRC): A Bi-Institutional Retrospective Analysis (REBUS Study)

Maria Alessandra Calegari, Lisa Salvatore, Brunella Di Stefano, Michele Basso, Armando Orlandi, Alessandra Boccaccino, Fiorella Lombardo, Alessandra Auriemma, Ina Valeria Zurlo, Maria Bensi, Floriana Camarda, Marta Ribelli, Raffaella Vivolo, Alessandra Cocomazzi, Carmelo Pozzo, Michele Milella, Maurizio Martini, Emilio Bria and Giampaolo Tortora

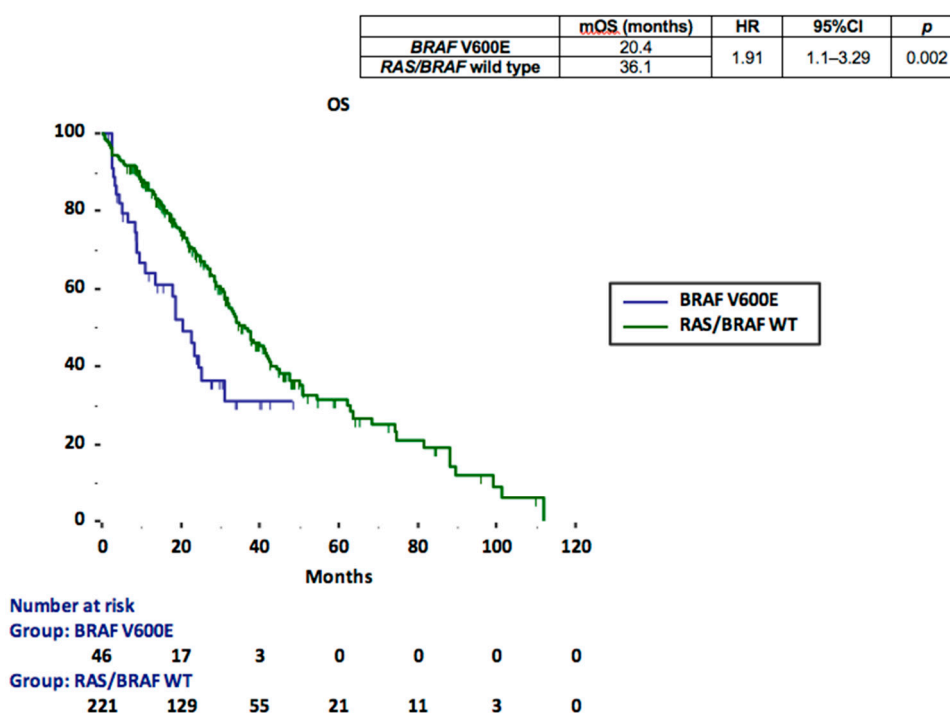


Figure S1: Kaplan-Meier OS curves for *BRAF* V600E cohort vs *RAS/BRAF* wild type dataset

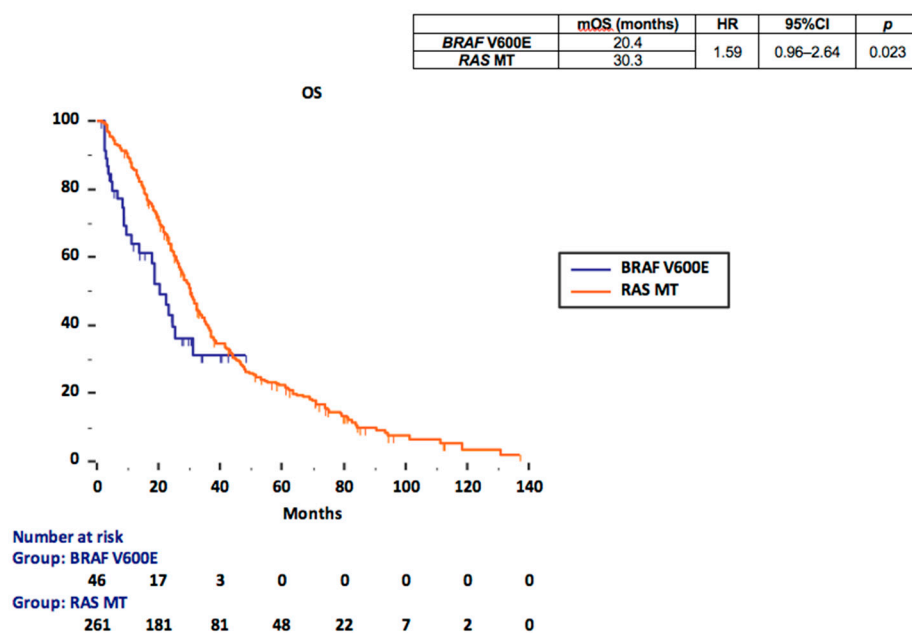


Figure S2: Kaplan-Meier OS curves for *BRAF* V600E cohort vs *RAS* mutated dataset

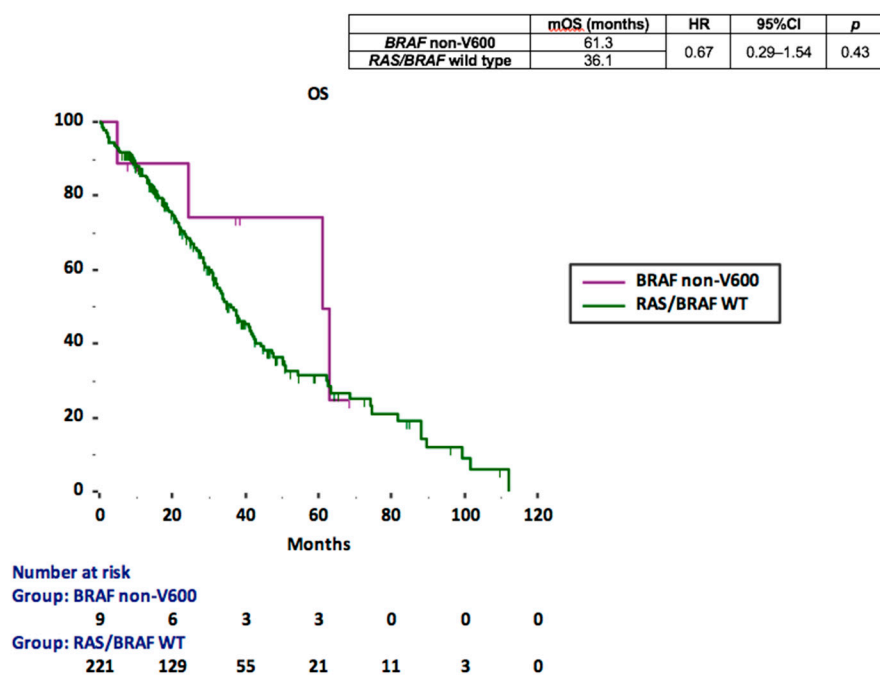


Figure S3: Kaplan-Meier OS curves for *BRAF* nonV600 cohort vs *RAS* mutated dataset

	mOS (months)	HR	95%CI	p
<i>BRAF</i> non-V600	61.3	0.53	0.25–1.11	0.2
<i>RAS</i> MT	30.3			

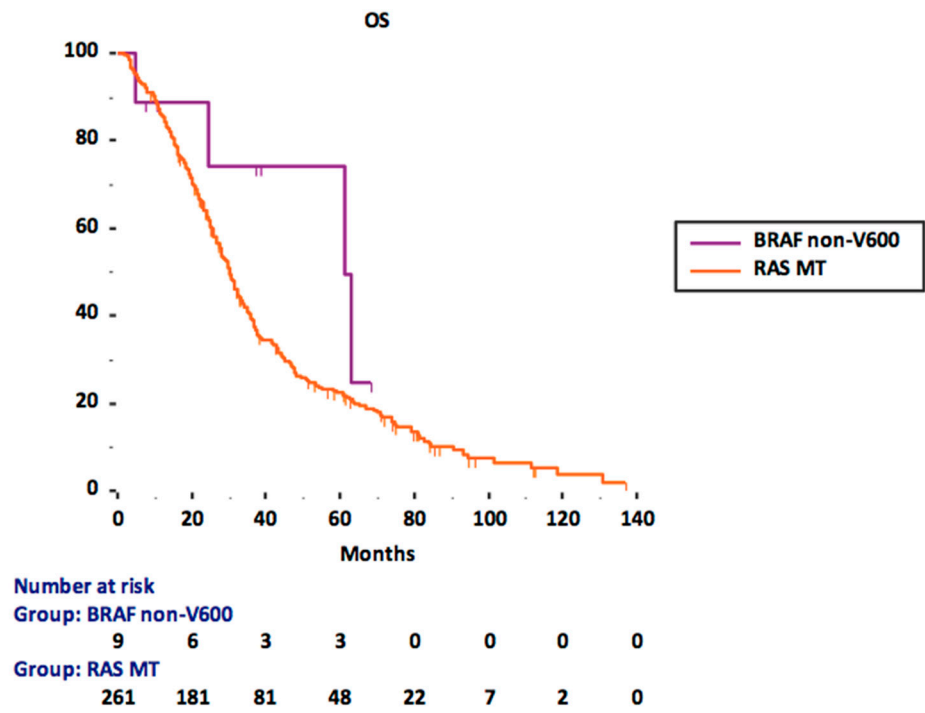


Figure S4: Kaplan-Meier OS curves for *BRAF* nonV600 cohort vs *RAS*/*BRAF* wild type dataset