

Fourteen-Day Gemcitabine-Docetaxel Chemotherapy Is Effective and Safer Compared to 21-Day Regimen in Patients with Advanced Soft Tissue and Bone Sarcoma

Minggui Pan, Maily K. Trieu, Manpreet Sidhu, Jeanette Yu, Tiffany Seto and Kristen Ganjoo

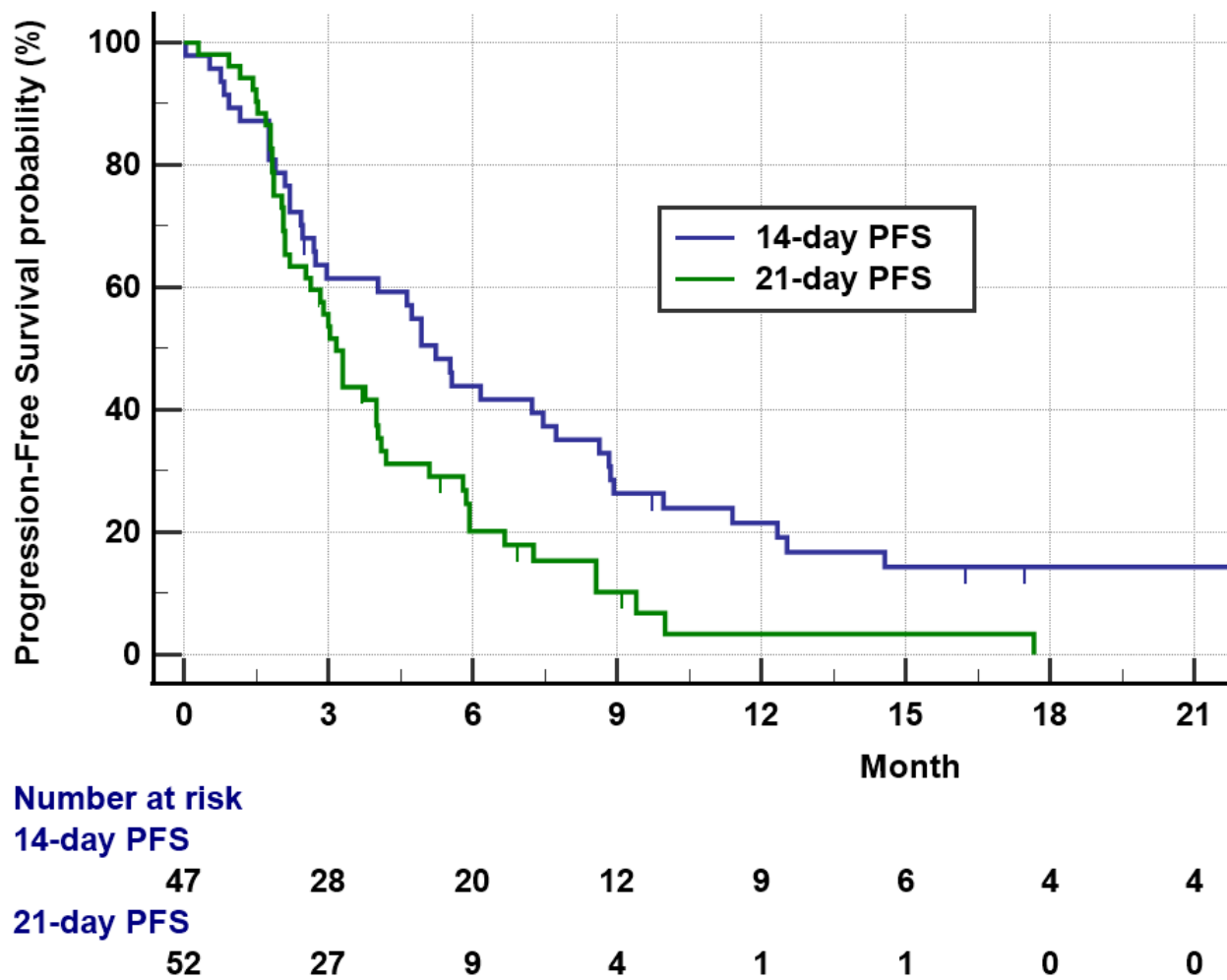


Figure S1. Kaplan-Meier plot of PFS of patients treated with first-line 14-day or 21-day G-D regimen. Note the median PFS was 5.2 months versus 3.2 months for 14-day (blue) and 21-day (green) G-D regimen respectively ($p = 0.01$). Patients who had not progressed are marked as censored. Number of patients at risk is indicated in the bottom.

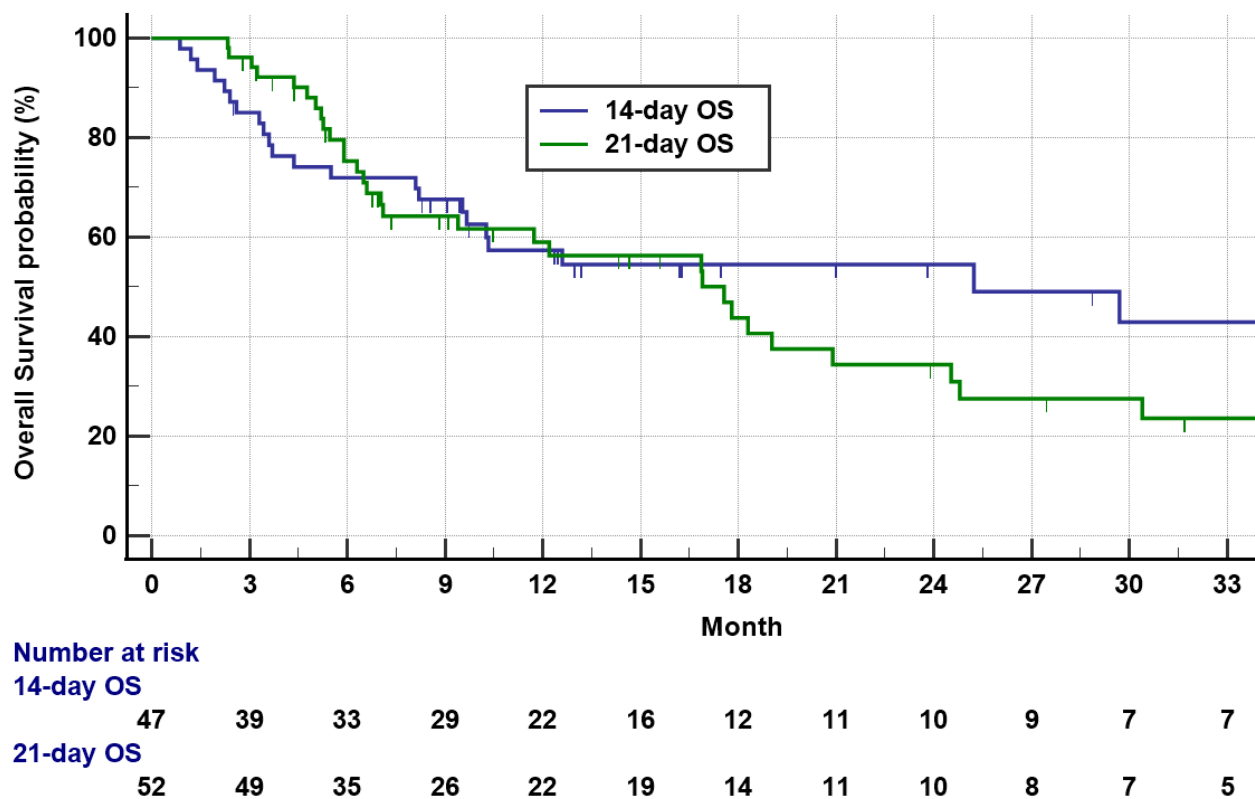


Figure S2. Kaplan-Meier plot of OS of patients treated with first-line 14-day or 21-day G-D regimen. Note the median OS was 25.2 months versus 17.6 months for 14-day(blue) and 21-day (green) G-D regimen respectively ($p = 0.57$). Patients who were still alive are marked as censored. Number of patients at risk is indicated in the bottom.

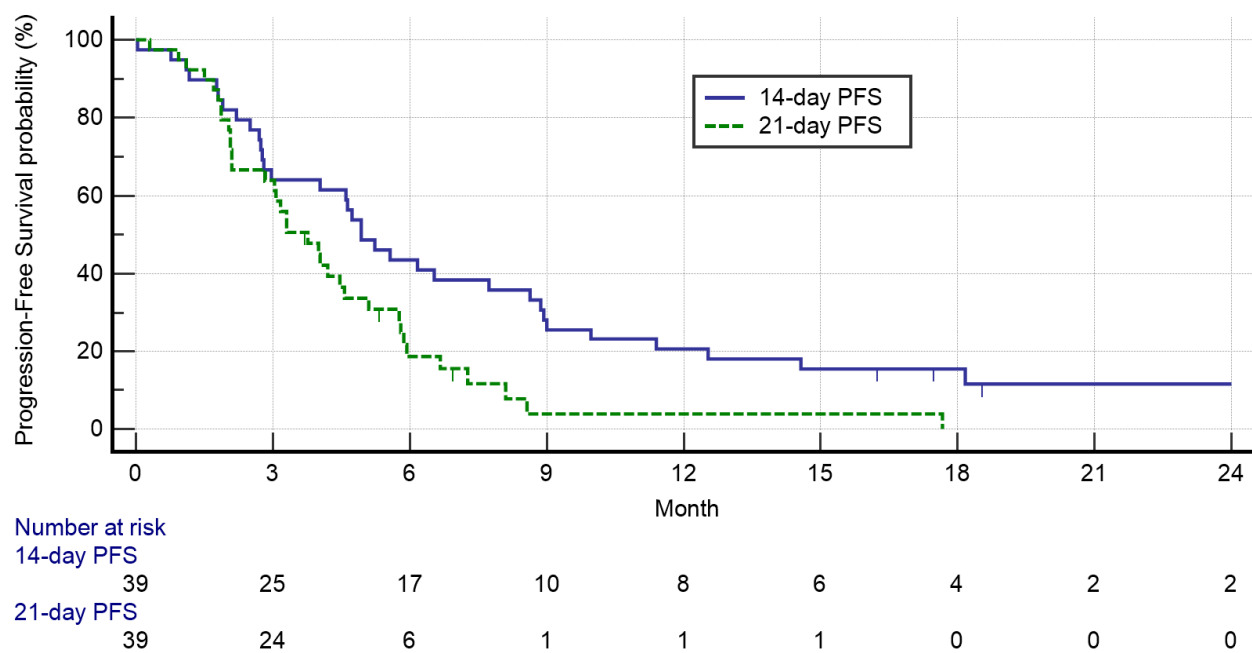


Figure S3. Kaplan-Meier plot of PFS of patients with advanced leiomyosarcoma (LMS) treated with 14-day (blue) versus 21-day (green) G-D regimen. Note $p = 0.01$ indicating better PFS for patients treated with 14-day G-D regimen compared to 21-day regimen. Patients who have not progressed are marked as censored. Number of patients at risk is indicated in the bottom.

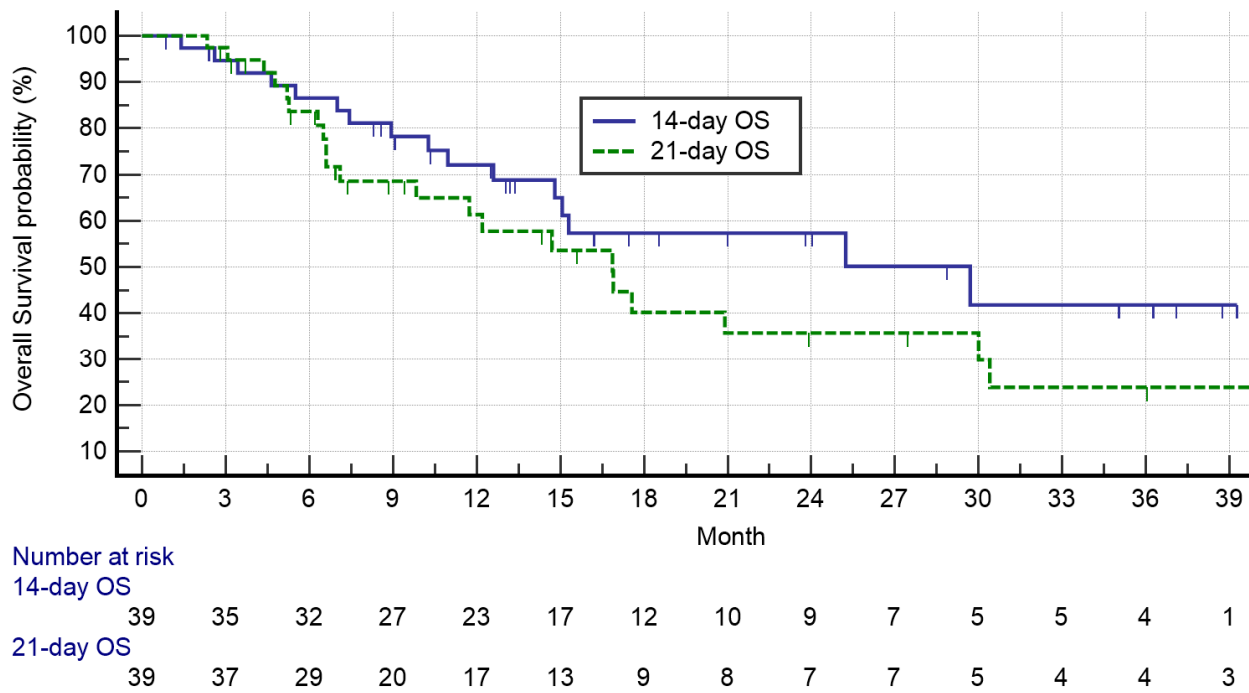


Figure S4. Kaplan-Meier plot of OS of patients with advanced LMS treated with 14-day (blue) or 21-day (green) G-D regimen. Note $p = 0.2$ indicating no significant statistical difference between patients treated with either 14-day (blue) or 21-day (green) G-D regimen. Patients who were still alive are marked as censored. Number of patients at risk is indicated in the bottom.