

Article

Supplementary Materials: PD-L1 as a Prognostic Factor in Early-Stage Colon Carcinoma within the Immunohistochemical Molecular Subtype Classification

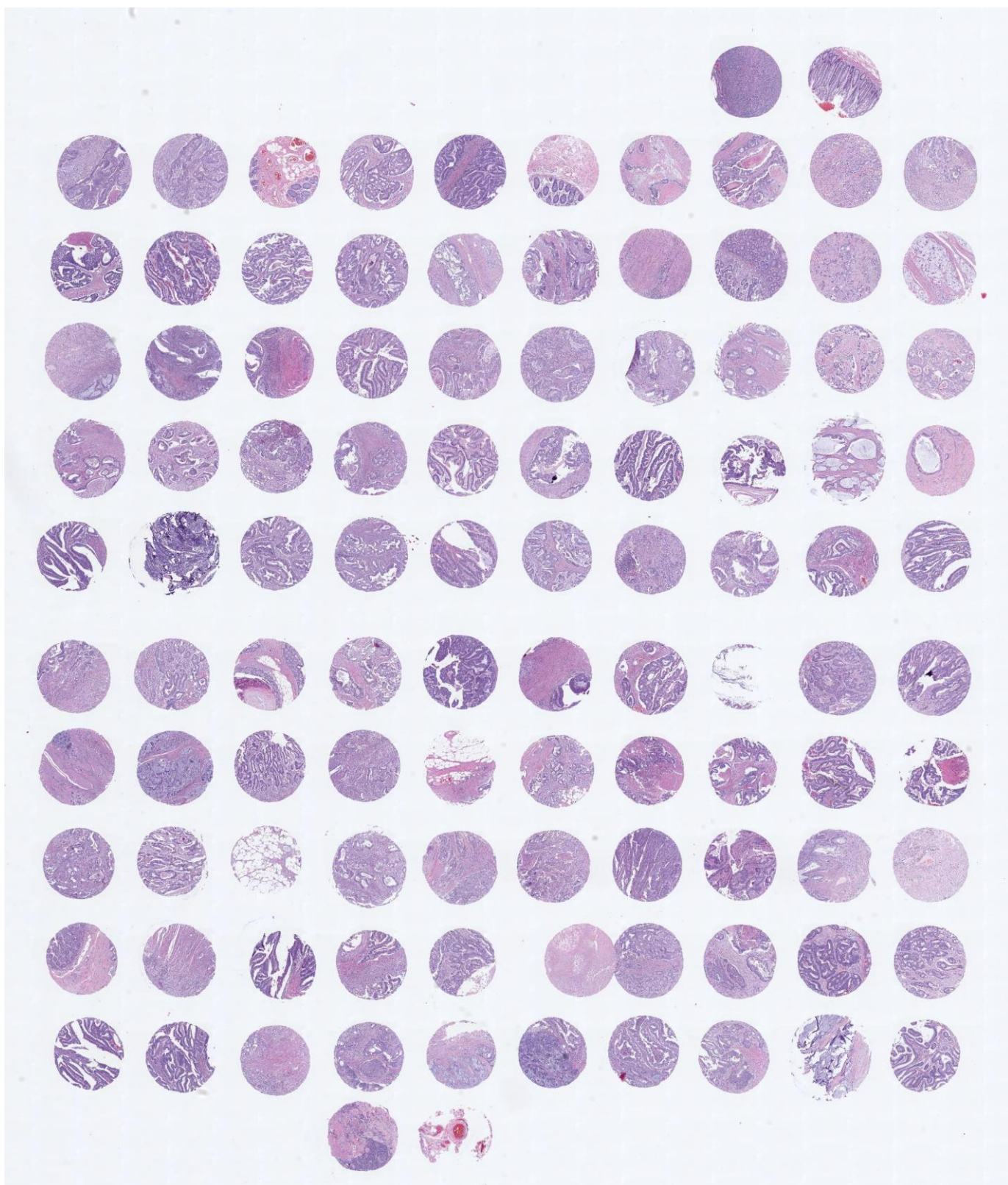
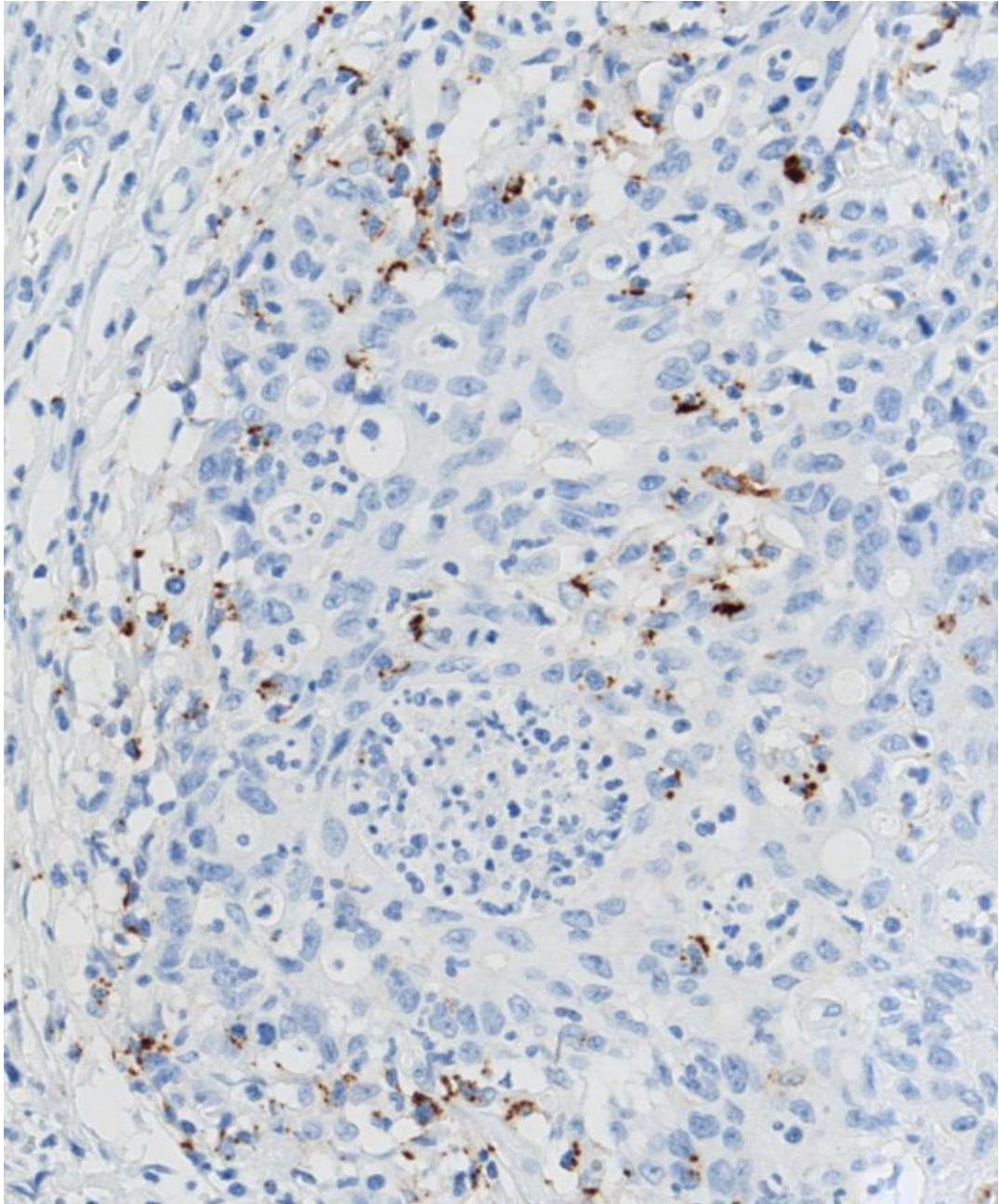
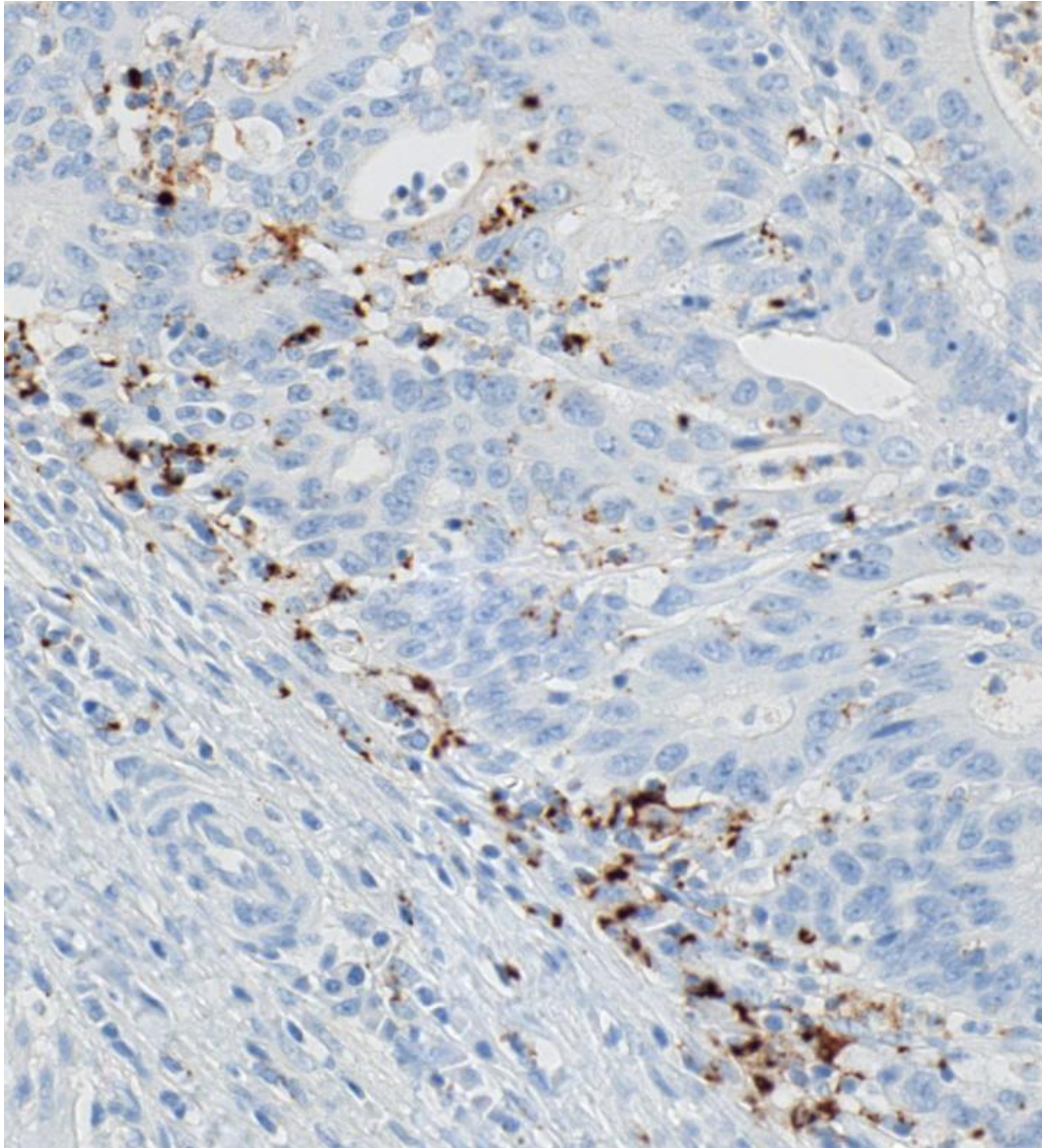


Figure S1. Scanned image of TMA (hematoxylin-eosin stain).



(a)



(b)

Figure S2. IHC scan detail on high power field of PD-L1 staining in immune cells (core X20).