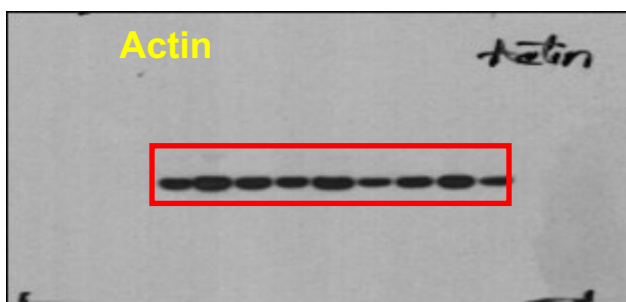
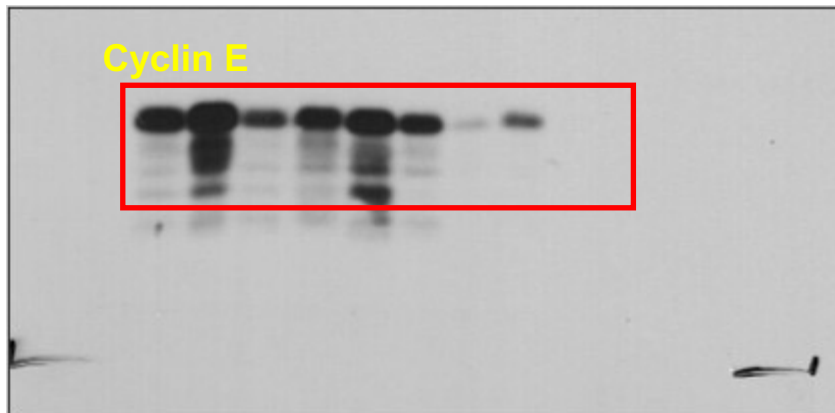
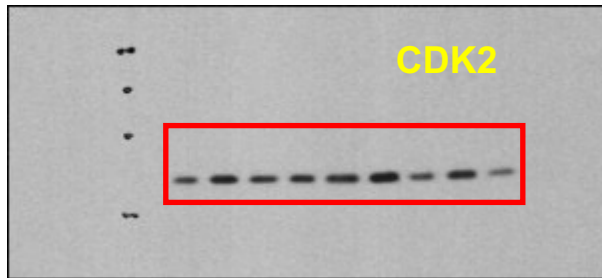
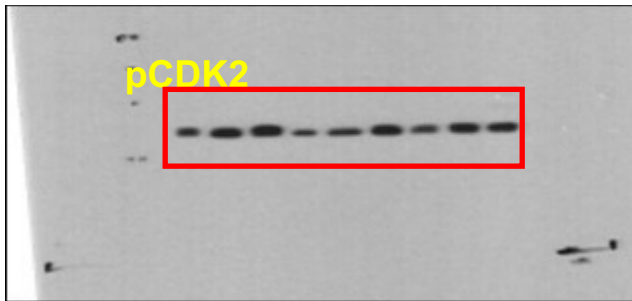


# Uncropped Western Blots

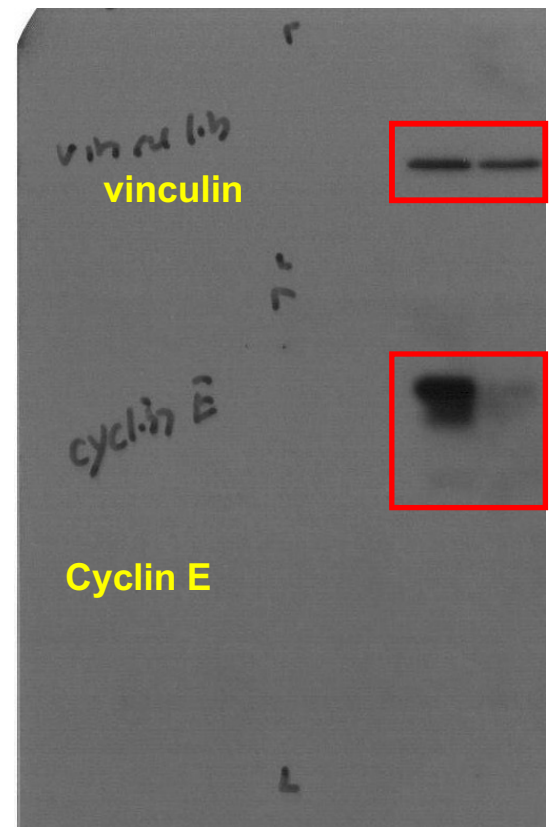
**Targeting Replicative Stress and DNA Repair by Combining  
PARP and Wee1 Kinase Inhibitors is Synergistic in Triple  
Negative Breast Cancers with Cyclin E or *BRCA1* Alteration**

**Authors:** Xian Chen, Dong Yang, Jason P. W. Carey, Cansu Karakas, Constance Albarracin, Aysegul A. Sahin, Banu K. Arun, Merih Guray Durak, Mi Li, Mehrnoosh Kohansal, Tuyen N. Bui, Min Jin Ha, Kelly K. Hunt and Khandan Keyomarsi

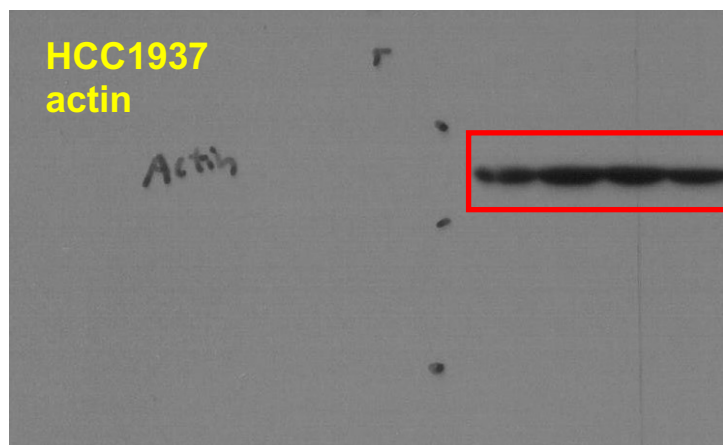
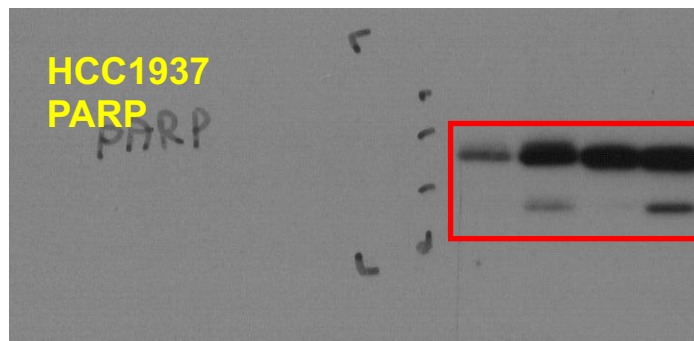
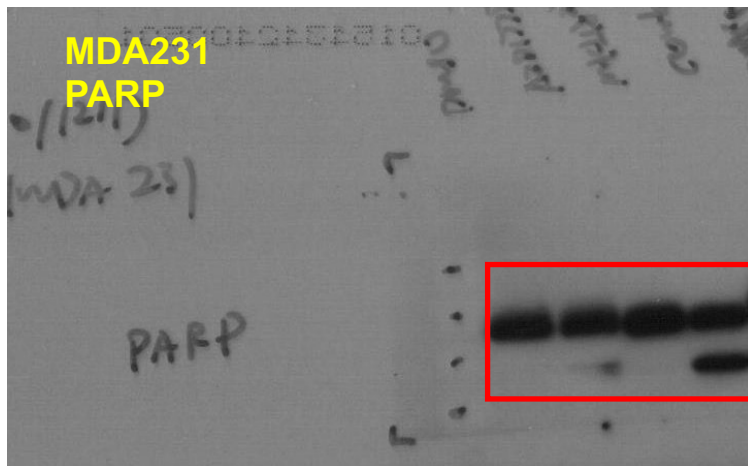
# Figure 2B



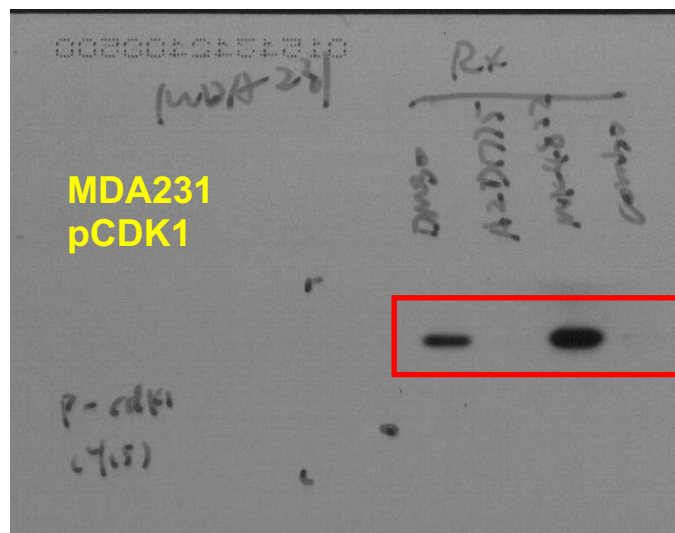
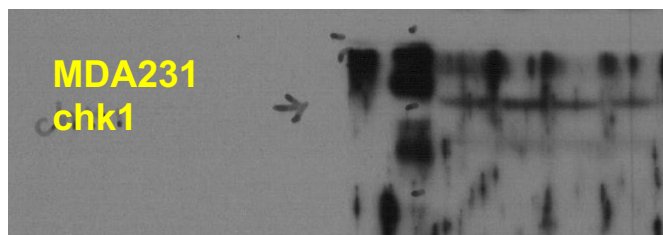
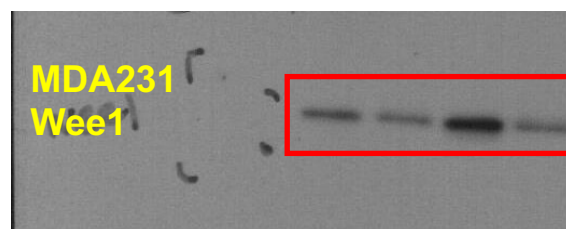
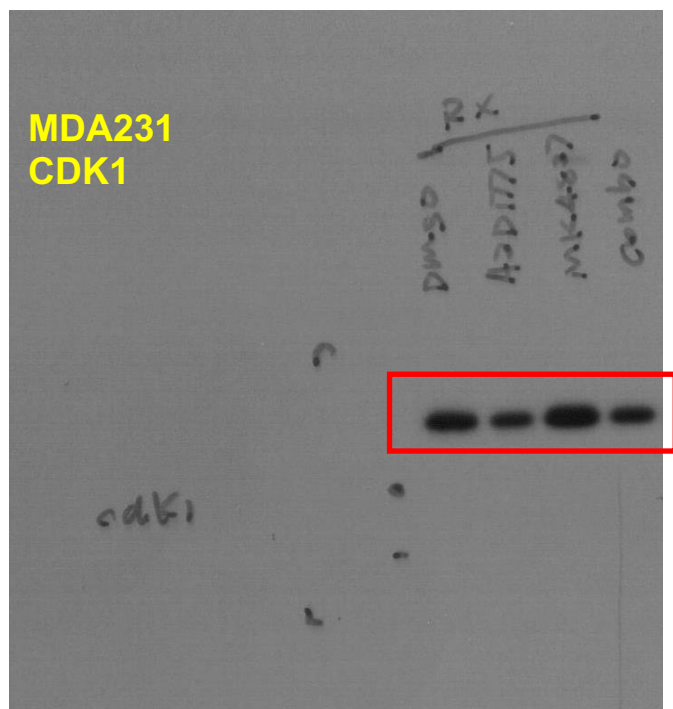
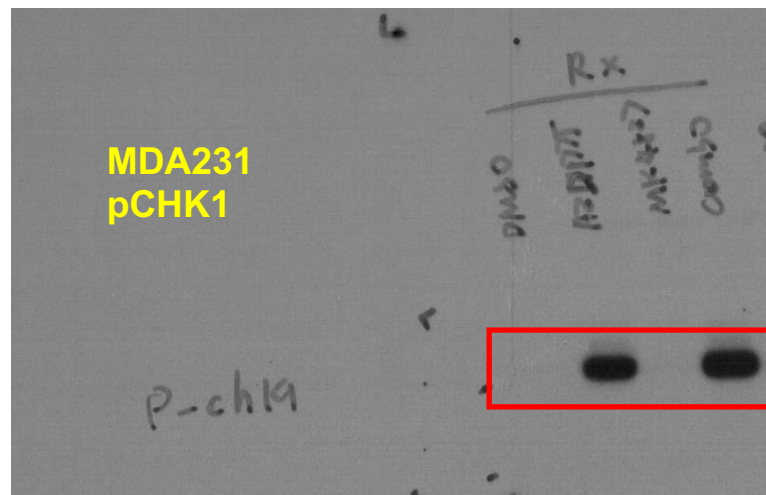
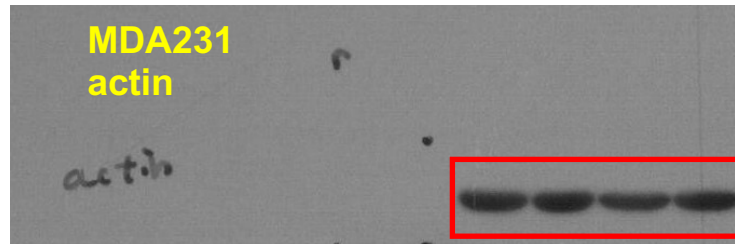
# Figure 2E



# Figure 3D



# Figure 4D (MDA231)



# Figure 4D (HCC1937)

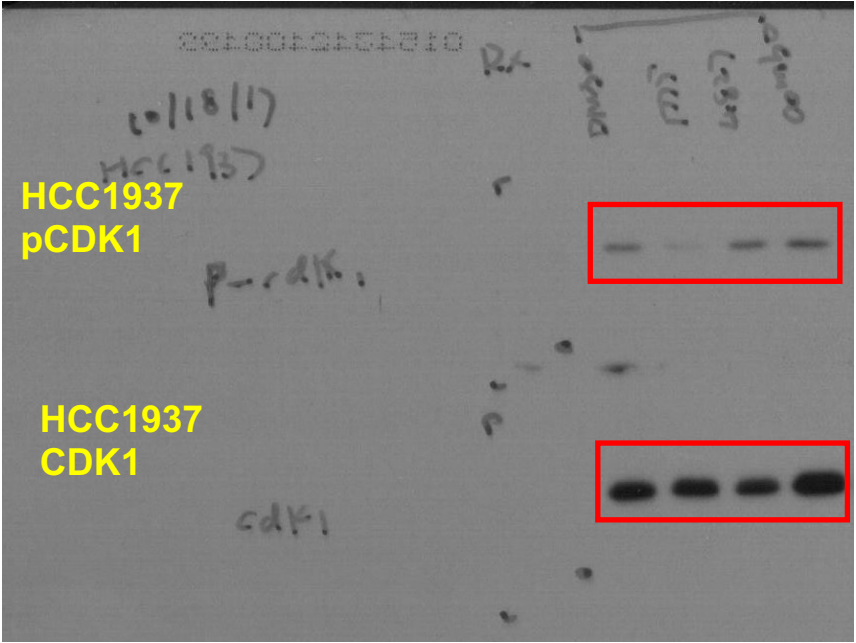
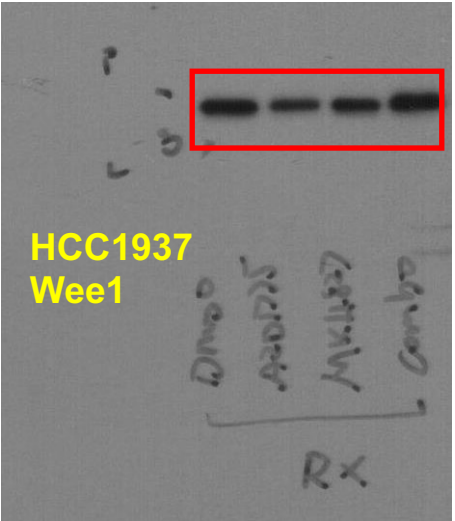
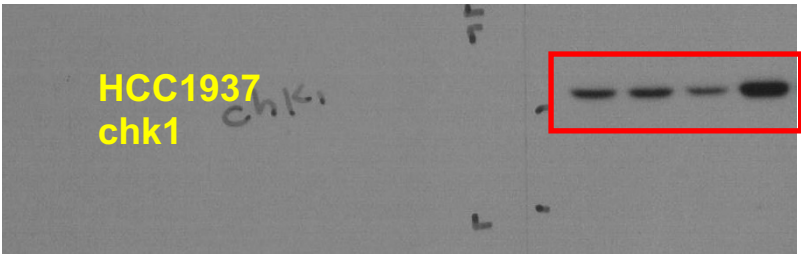
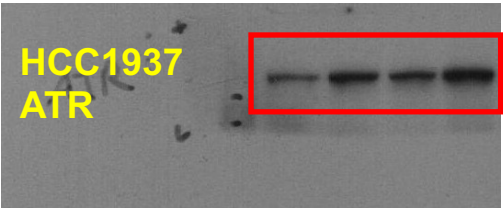
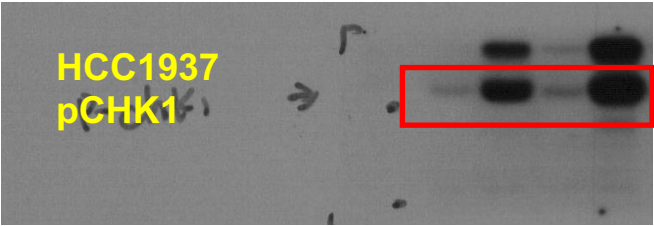
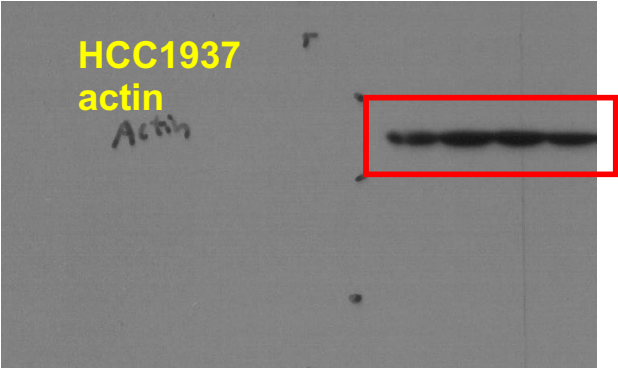
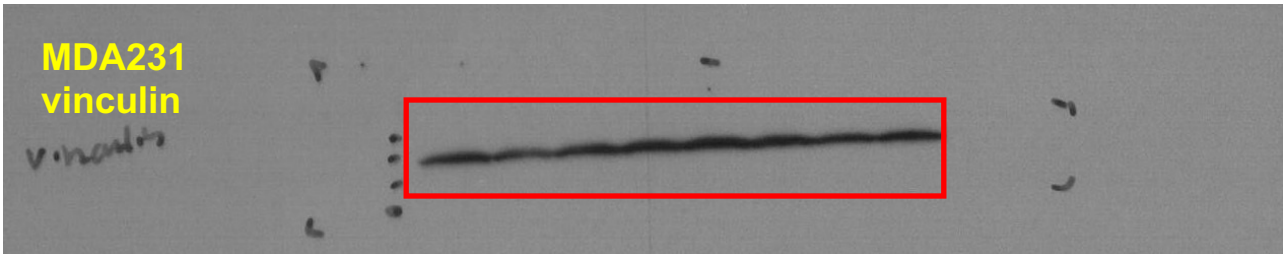
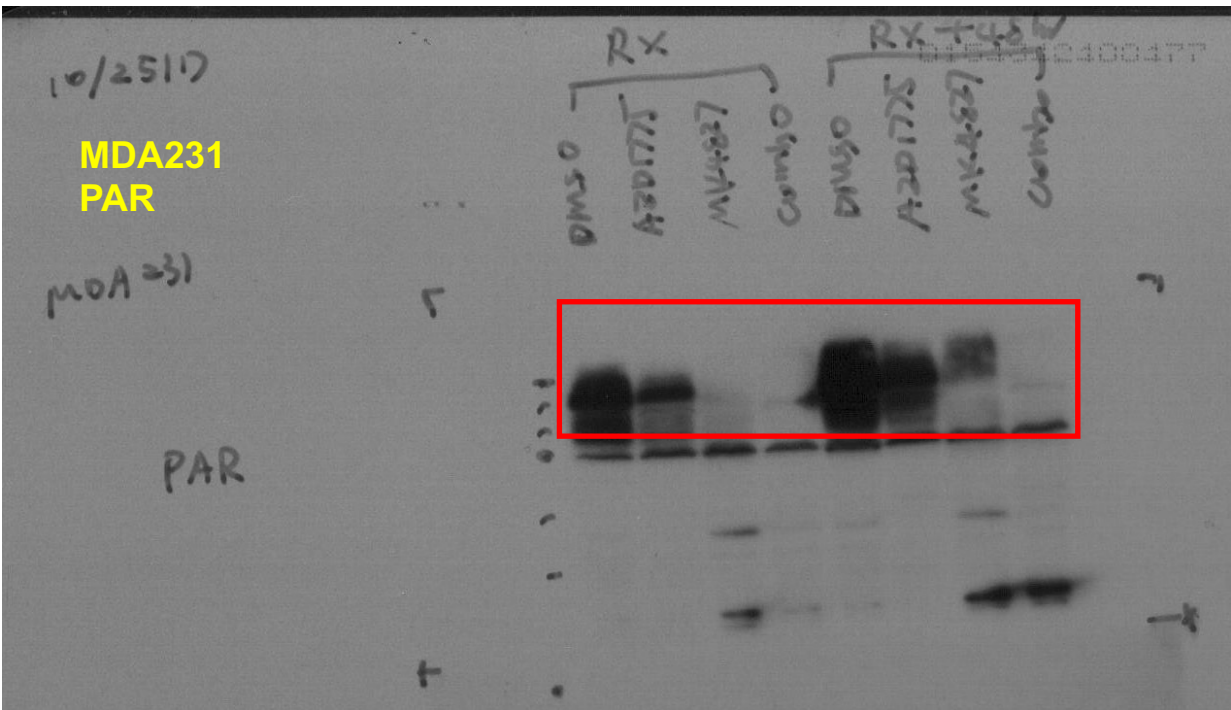
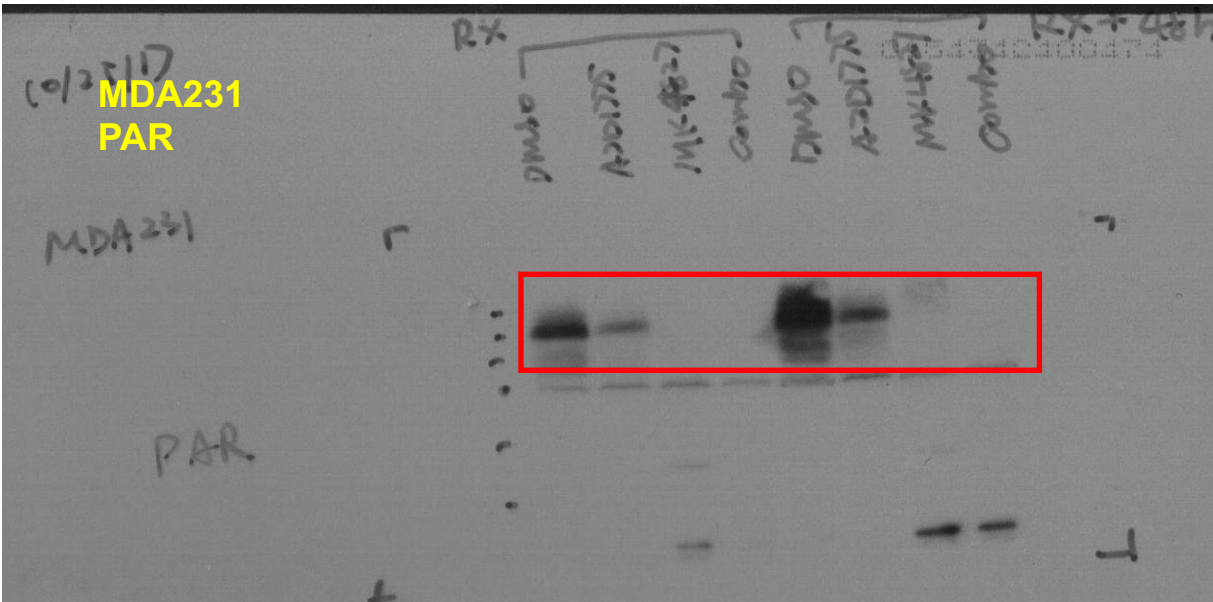
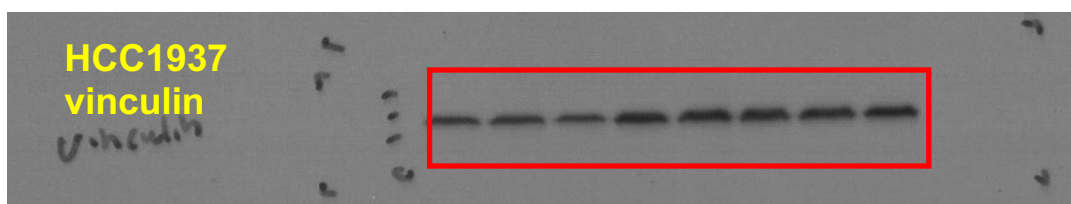
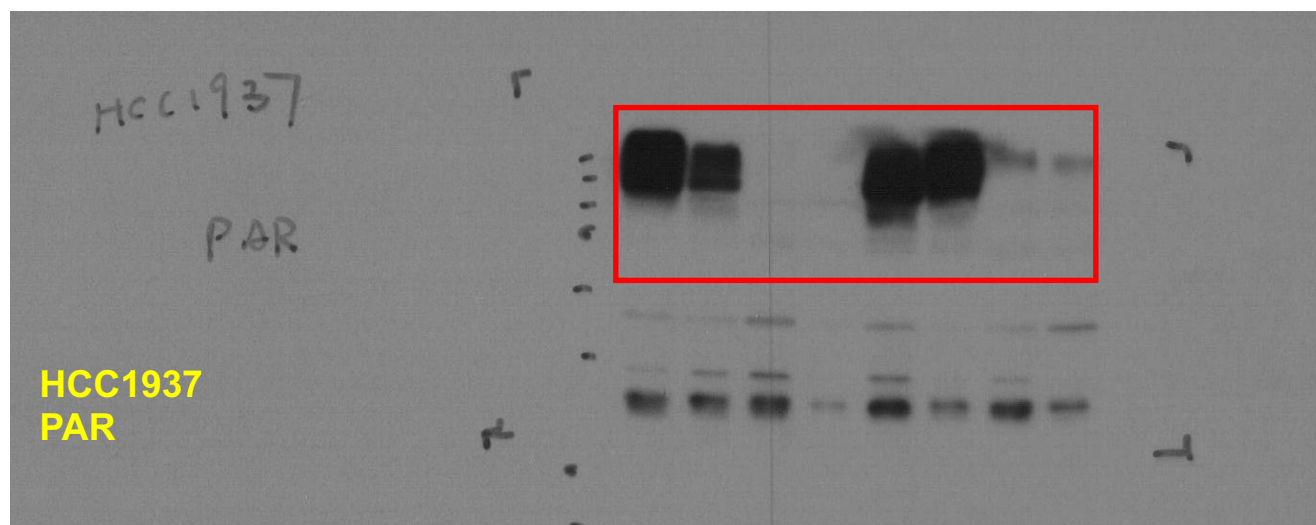
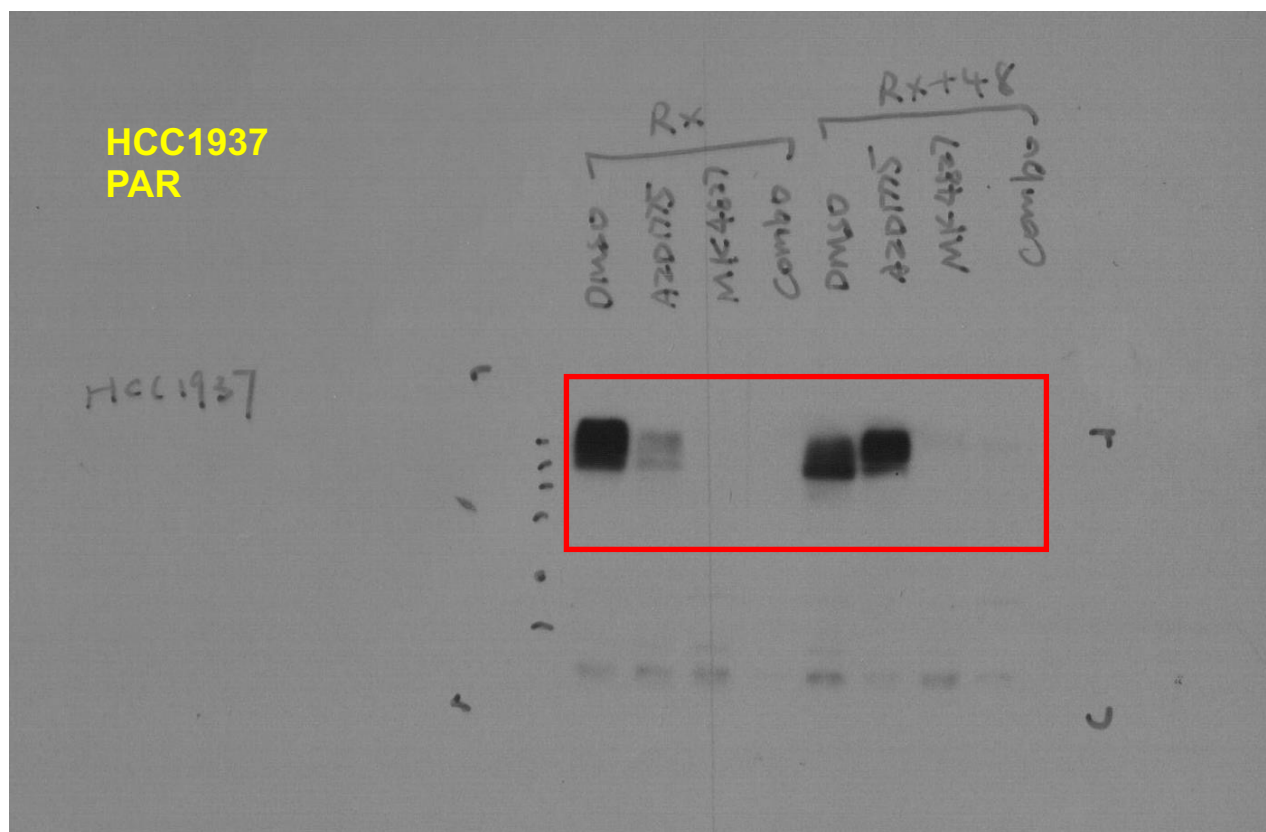




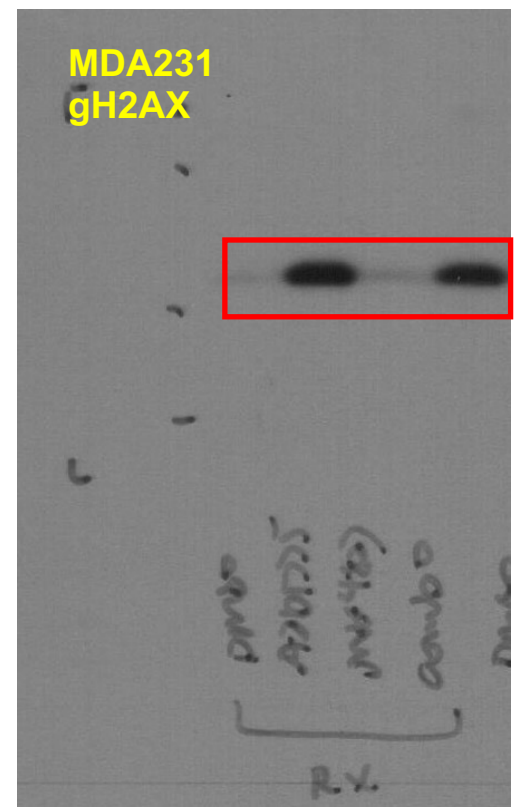
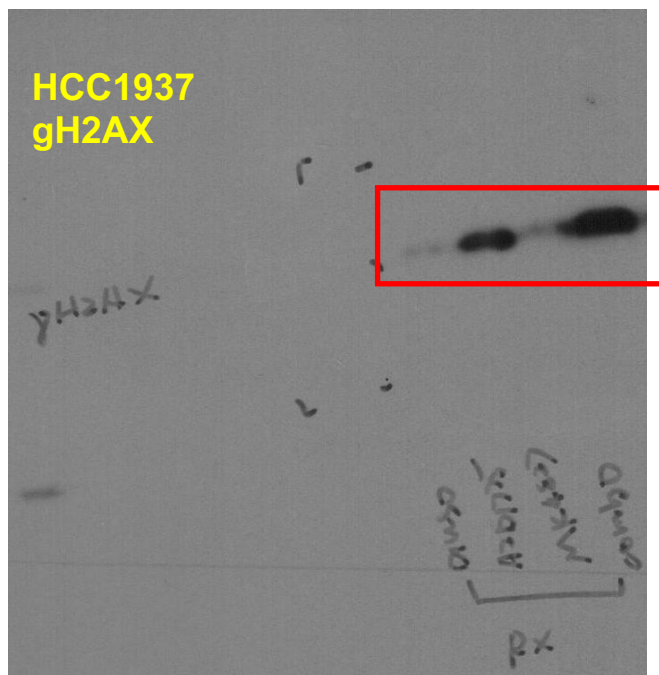
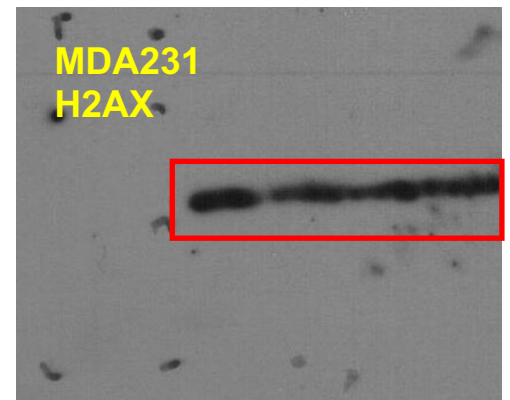
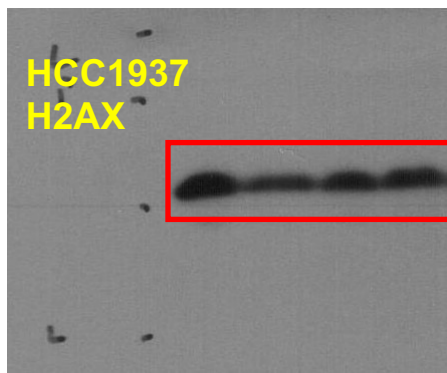
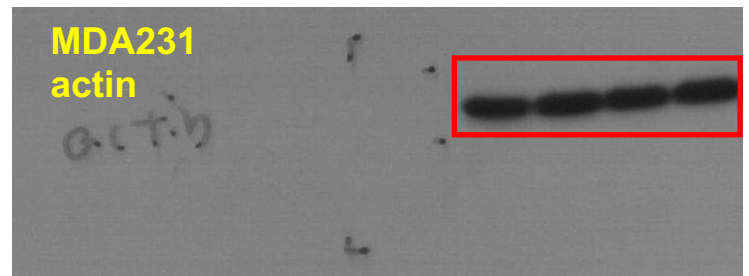
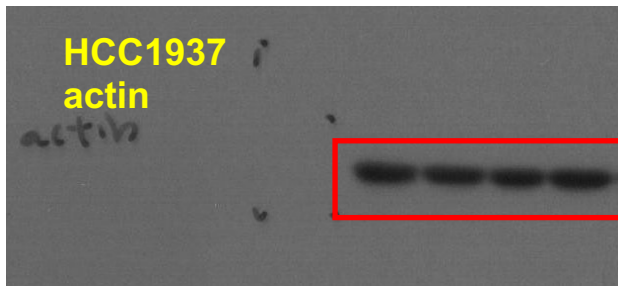
Figure 5C (MDA231)



# Figure 5C (HCC1937)

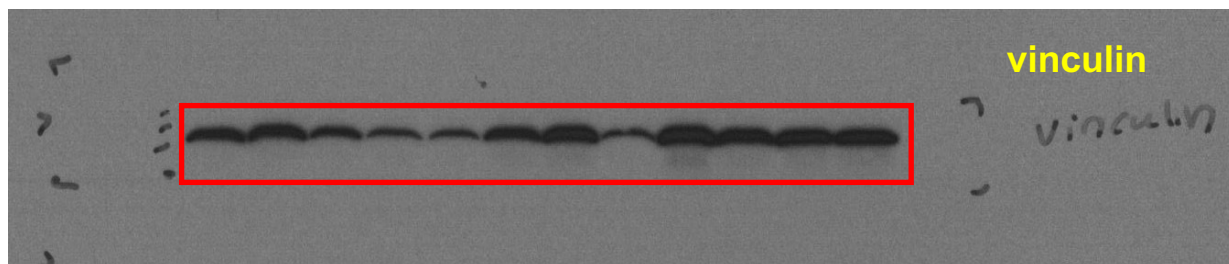
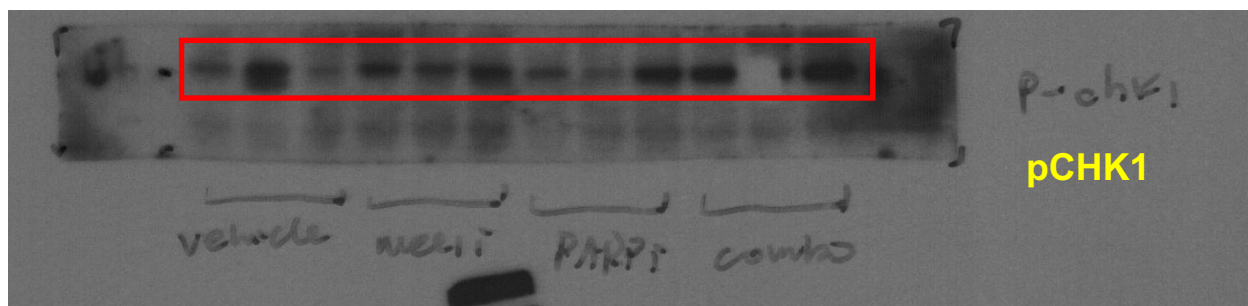
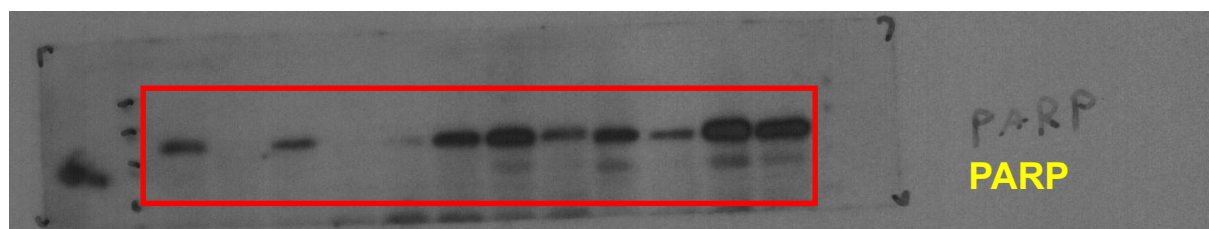
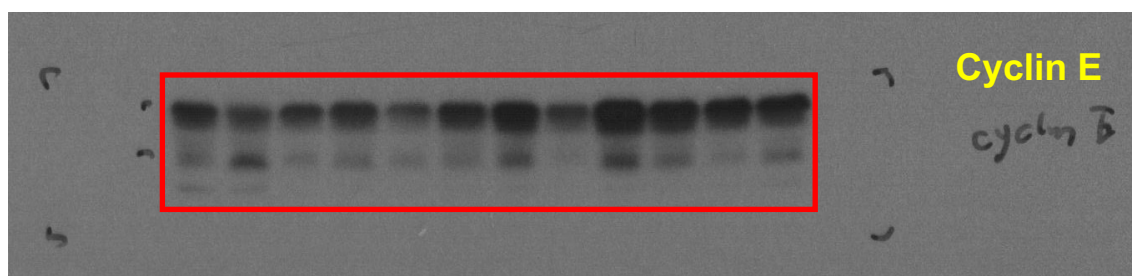
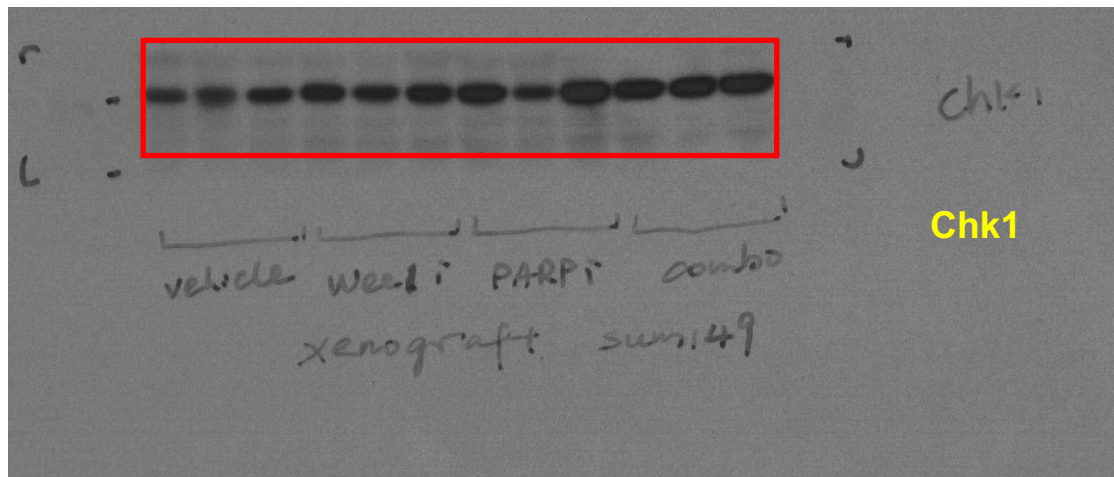


# Figure 5F





# Figure 6H



# Figure S2C

