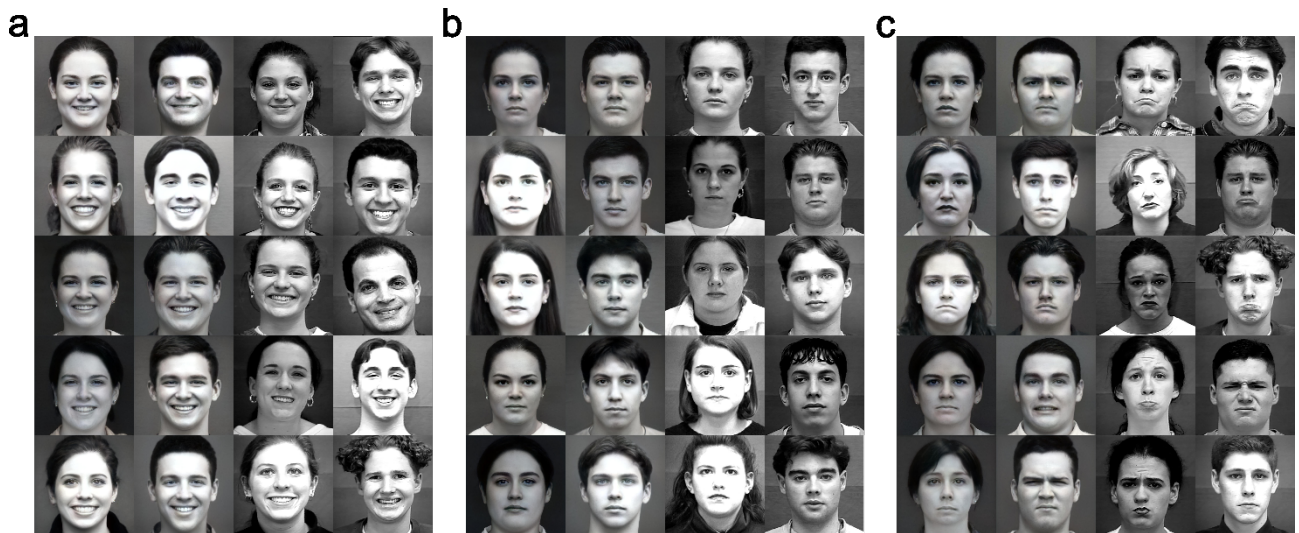


Supplementary Materials of “Real and Deepfake Face Recognition: an EEG Study on Cognitive and Emotive Implications”



*Figure S 1 – All 60 images of human faces used in the proposed visual stimuli task. **a** Happy set, **b** Neutral set, **c** Sad set. For each set, the leftmost column report real faces of woman, then faces of real men, AI-generated faces of woman and, finally, AI-generated faces of men.*

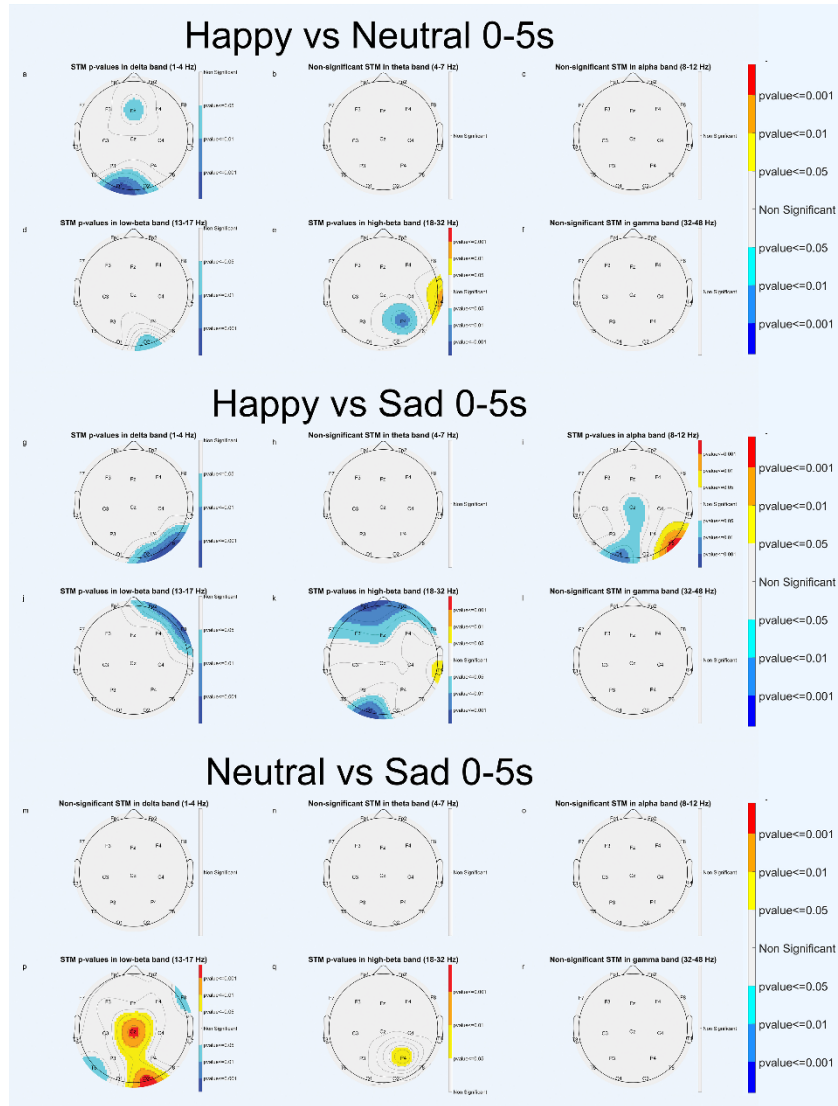


Figure S2 – STMs of significant statistical activation of brain areas in Emotional comparisons (0-5 s). "Happy vs. Neutral" comparison (a,b,c,d,e,f); a delta band, b theta band, c alpha band, d low-beta band, e high-beta band, f gamma band. "Happy vs. Sad" comparison (g,h,i,j,k,l); g delta band, h theta band, i alpha band, j low-beta band, k high-beta band, l gamma band. "Neutral vs. Sad" comparison (m,n,o,p,q,r); m delta band, n theta band, o alpha band, p low-beta band, q high-beta band, r gamma band.

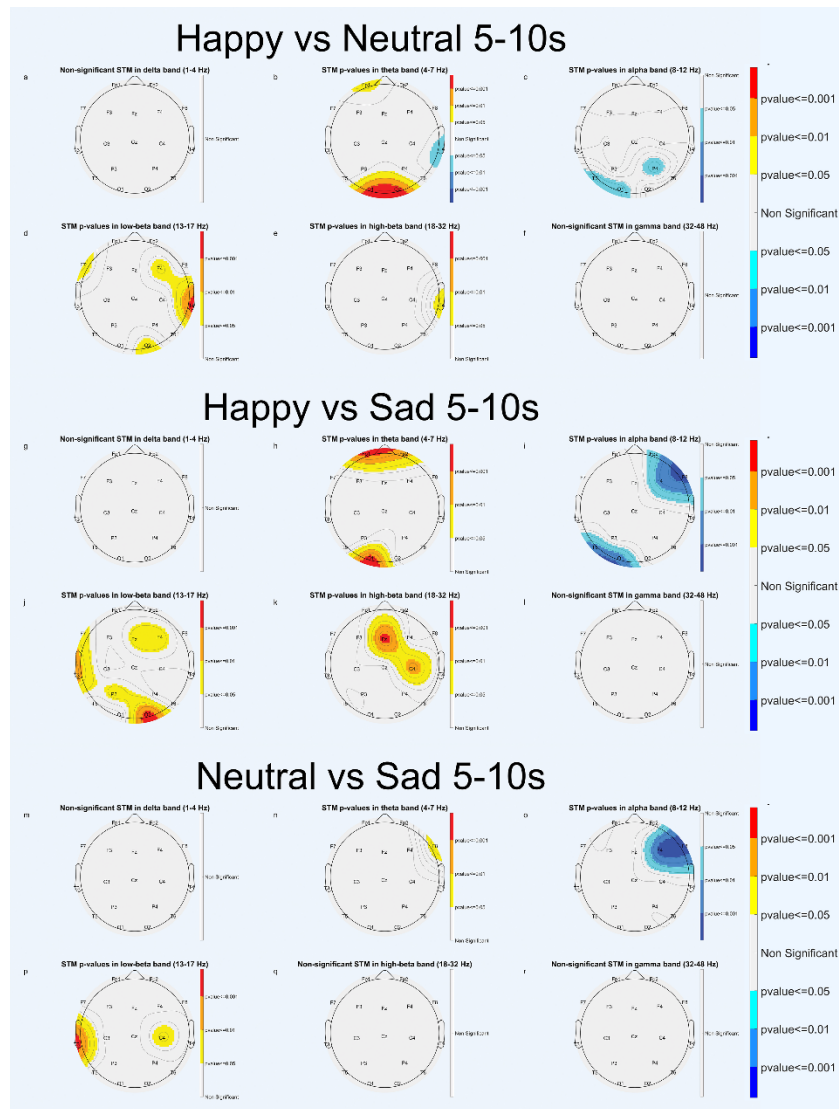


Figure S 3 – STMs of significant statistical activation of brain areas in Emotional comparisons (5-10 s). "Happy vs. Neutral" comparison (**a,b,c,d,e,f**); **a** delta band, **b** theta band, **c** alpha band, **d** low-beta band, **e** high-beta band, **f** gamma band. "Happy vs. Sad" comparison (**g,h,i,j,k,l**); **g** delta band, **h** theta band, **i** alpha band, **j** low-beta band, **k** high-beta band, **l** gamma band. "Neutral vs. Sad" comparison (**m,n,o,p,q,r**); **m** delta band, **n** theta band, **o** alpha band, **p** low-beta band, **q** high-beta band, **r** gamma band.