

Supplementary Materials

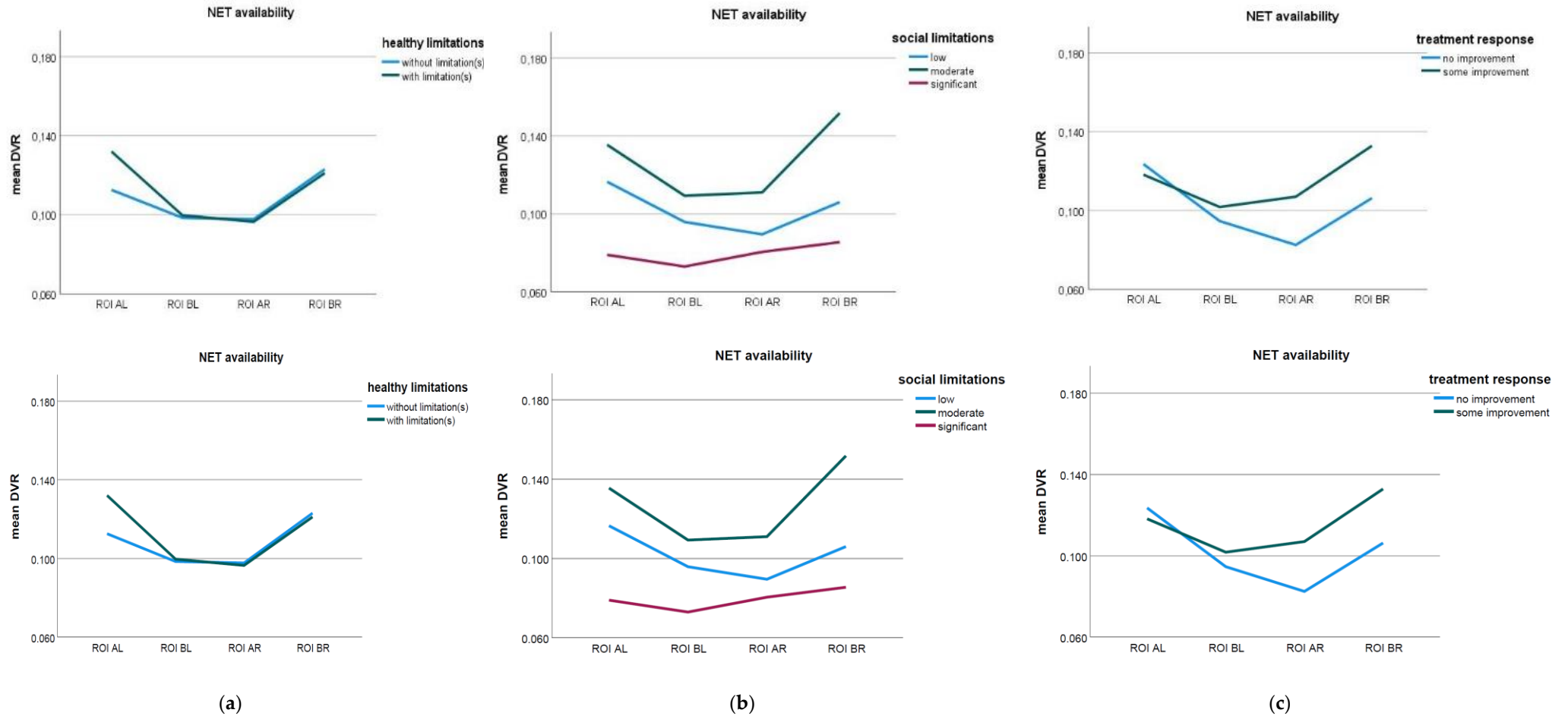


Figure S1. Mean distributed volume ratios (DVRs) in selected regions of interest (ROIs) for (a) patients with and without diagnosed comorbidities and/or physical disease; (b) patients with different levels of social impairments; (c) patients with and without improvement in CAARS DSM-Global raw scores. Note: AL, attention-related ROI of left hemisphere; BL, behavior-related ROI of left hemisphere; AR, attention-related ROI of right hemisphere; BR, behavior-related ROI of right hemisphere.