

Supplementary Materials

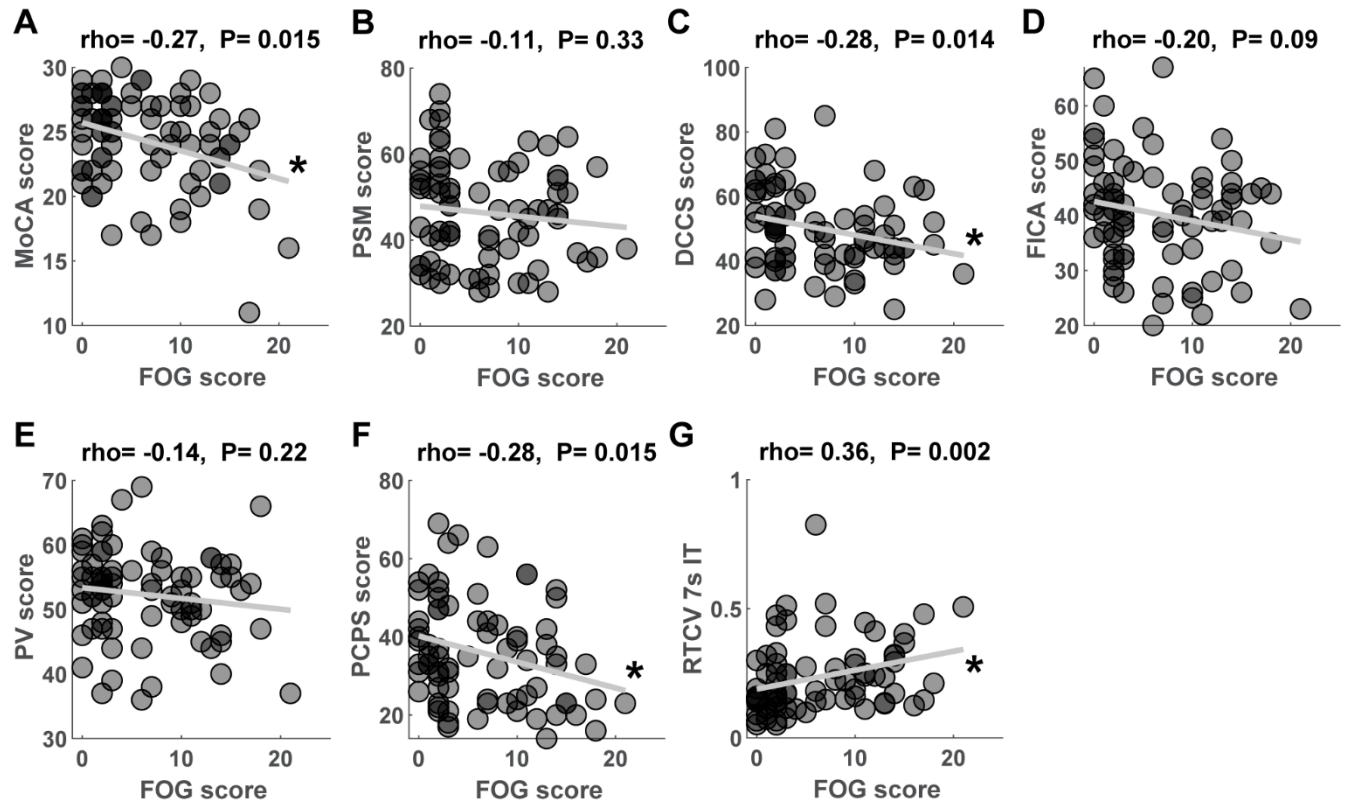


Fig. S1. Spearman correlation plots between FOG scores and cognitive measurement scores (A-G) in PD patients. Higher FOG score denotes severe FOG, lower MoCA score (A) and NIH toolbox cognitive tests (B-F), and higher RTCV (G) denote poor cognitive control. * $p < 0.05$ represents significant correlation.

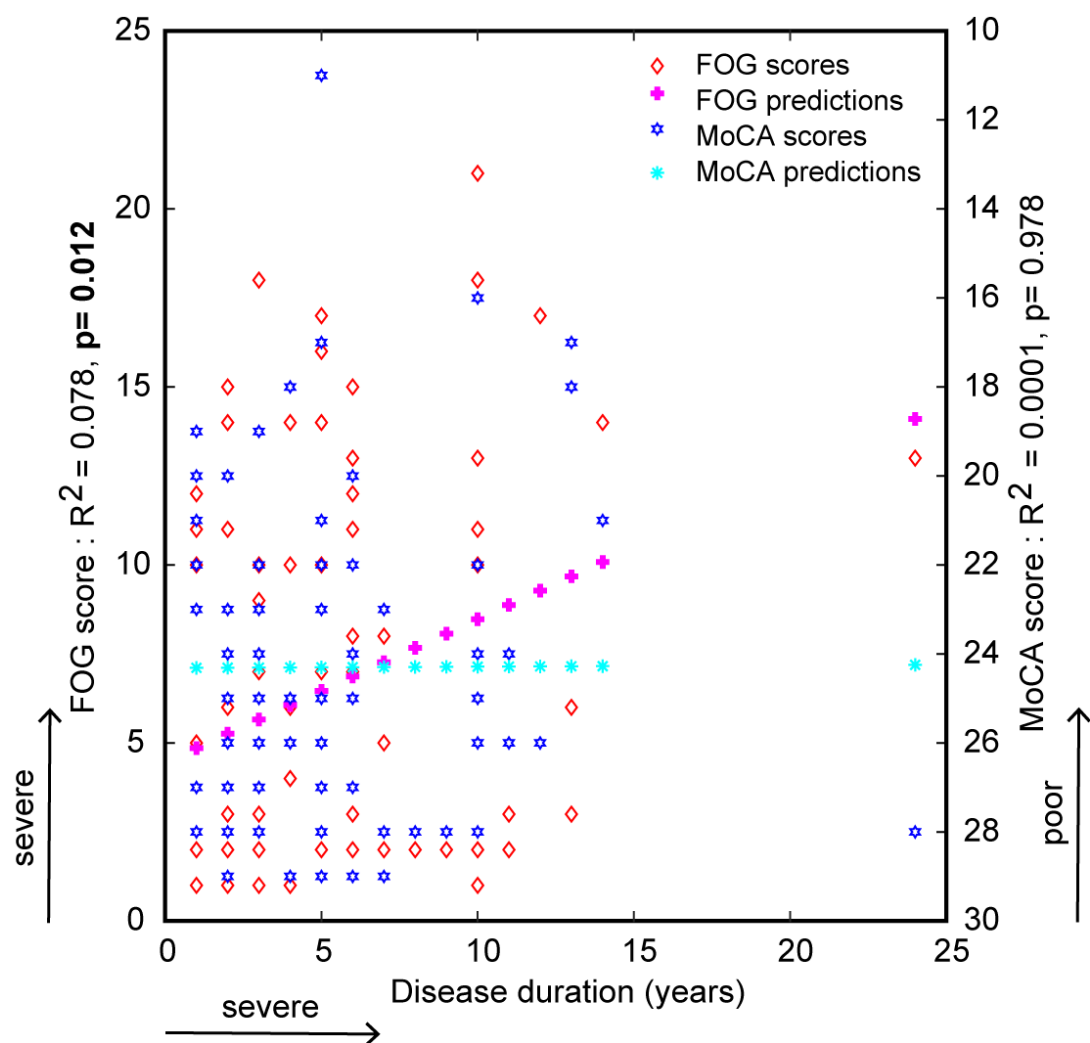


Fig. S2. Linear regression analysis and predicted responses between disease duration and FOG severity and cognitive assessment (MoCA) scores. Bold p-value represents the significance.

Table S1. Cognitive Measurements between PDFOG+ and PDFOG- controlling for variables

	Model 1	Model 2	Model 3	Model 4	Model 5	Model 6	Model 7
Variable	Age	Gender	Years of Education	Disease Duration	Age, Gender, Education	Age, Gender, Education, Disease Duration	Age, Gender, Education, Disease Severity
<i>Cognitive function</i>							
MoCA	4.14 (0.045)*	3.74 (0.057)	5.22 (0.025)*	4.3 (0.041)*	4.55 (0.034)*	4.7 (0.034)*	0.68 (0.411)
<i>Episodic memory</i>							
PSM	0.99 (0.324)	1.66 (0.202)	0.68 (0.413)	1.52 (0.222)	0.049 (0.487)	0.43 (0.515)	0.58 (0.448)
<i>Executive function/Attention</i>							
DCCS	7.96 (0.006)**	8.51 (0.005)**	8.67 (0.004)**	7.9 (0.006)**	7.78 (0.007)**	7.44 (0.008)**	2.03 (0.159)
FICA	2.45 (0.122)	2.66 (0.107)	2.4 (0.126)	2.1 (0.152)	1.64 (0.205)	1.07 (0.304)	0.18 (0.673)
<i>Language</i>							
PV	1.92 (0.17)	1.81 (0.182)	1.6 (0.21)	2.06 (0.155)	1.21 (0.276)	1.28 (0.262)	1.29 (0.259)
<i>Processing speed</i>							
PCPS	1.46 (0.231)	1.9 (0.173)	2.23 (0.14)	2.03 (0.158)	1.46 (0.232)	1.53 (0.22)	0.07 (0.79)
<i>Temporal processing/Working memory</i>							
RTCV	4.9 (0.03)*	4.25 (0.043)*	3.77 (0.056)	3.99 (0.05)*	2.98 (0.089)	2.36 (0.129)	0.50 (0.484)

ANCOVAs for differences in cognition between PDFOG+ and PDFOG- controlling for variables. Model 1, adjusting for age; Model 2, adjusting for gender; Model 3, adjusting for years of education; Model 4, adjusting for disease duration; Model 5, adjusting for age, gender, years of education; Model 6, adjusting for all covariates; Model 7, adjusting for age, gender, years of education, and disease severity. Presented as F-value (p-value). *

p<0.05; ** p<0.01

Abbreviations:

MoCA: Montreal Cognitive Assessment

PSM: Picture Sequence Memory test of the NIHTB-CB

DCCS: Dimensional Change Card Sort test of the NIHTB-CB

FICA: Flanker Inhibitory Control and Attention test of the NIHTB-CB

PV: Picture Vocabulary test of the NIHTB-CB

PCPS: Pattern Comparison Processing Speed test of the NIHTB-CB

RTCV: Response Time Coefficient of Variation of 7-s interval timing task