

Supplementary Material

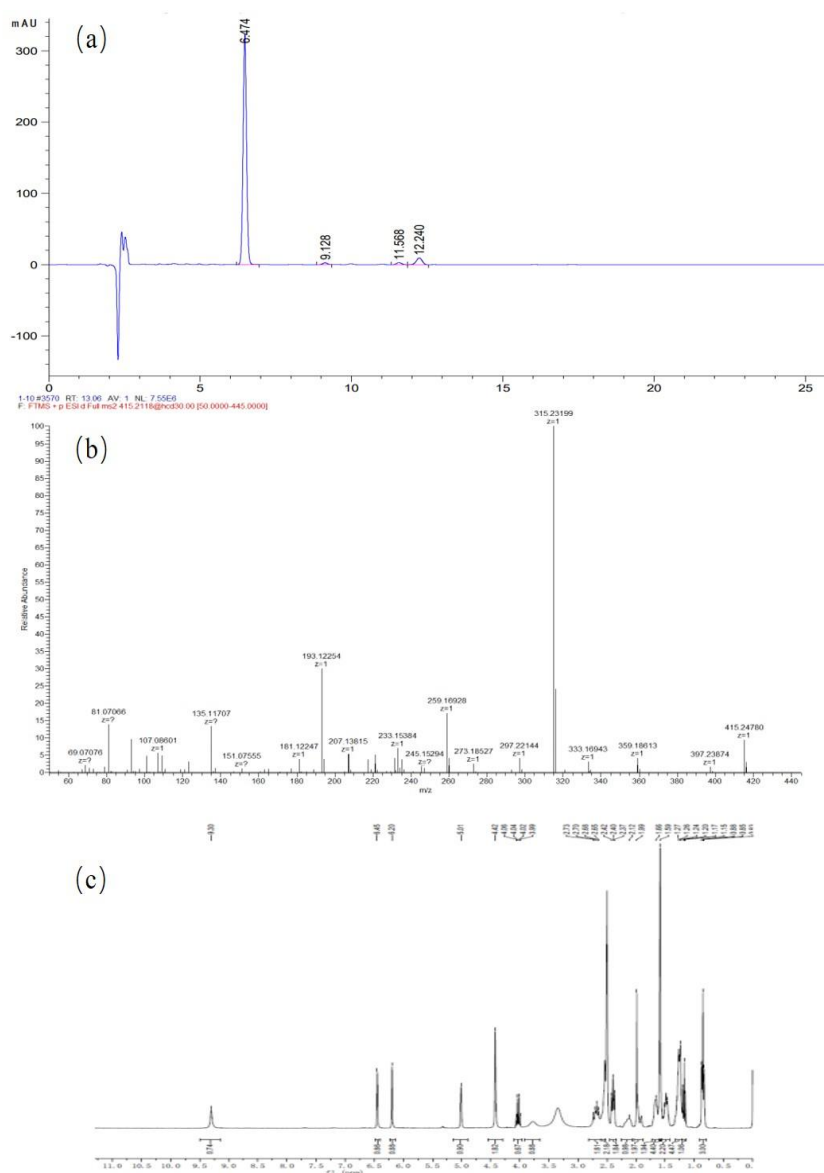
# High Specific and Rapid Detection of Cannabidiol by Gold Nanoparticle-Based Paper Sensor

Yufeng Sun <sup>†</sup>, Dong Zhu <sup>†</sup>, Ran Tao, Long Li, Bei Fan <sup>\*</sup> and Fengzhong Wang <sup>\*</sup>

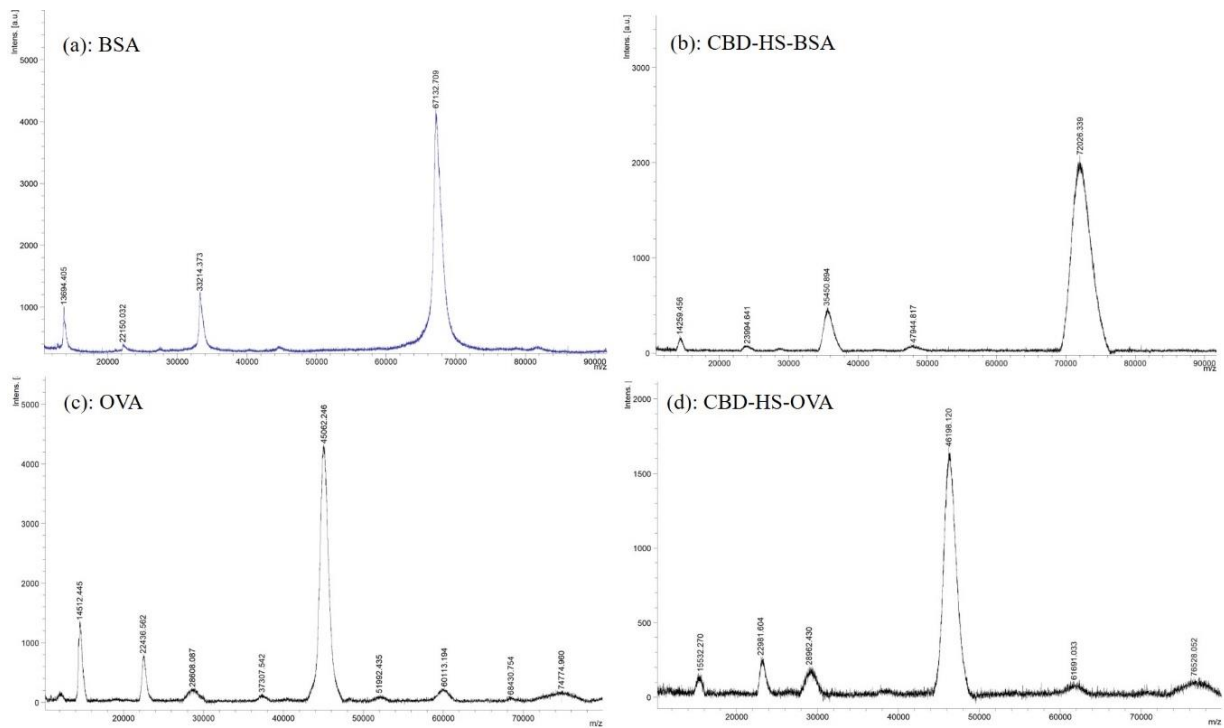
Institute of Food Science and Technology, Chinese Academy of Agricultural Sciences, Beijing 100193, China; sunyufeng@caas.cn (Y.S.); zhudong0111@163.com (D.Z.); taoran@caas.cn (R.T.); lilong@caas.cn (L.L.)

<sup>\*</sup> Correspondence: fanbei@caas.cn (B.F.); wangfengzhong@caas.cn (F.W.)

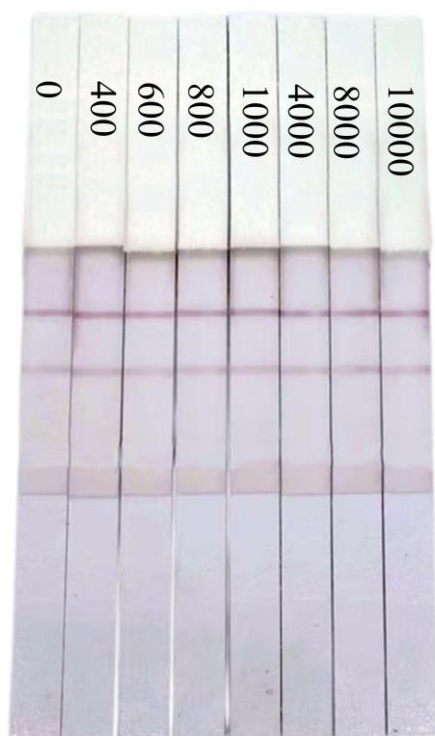
<sup>†</sup> These authors contributed equally to this work.



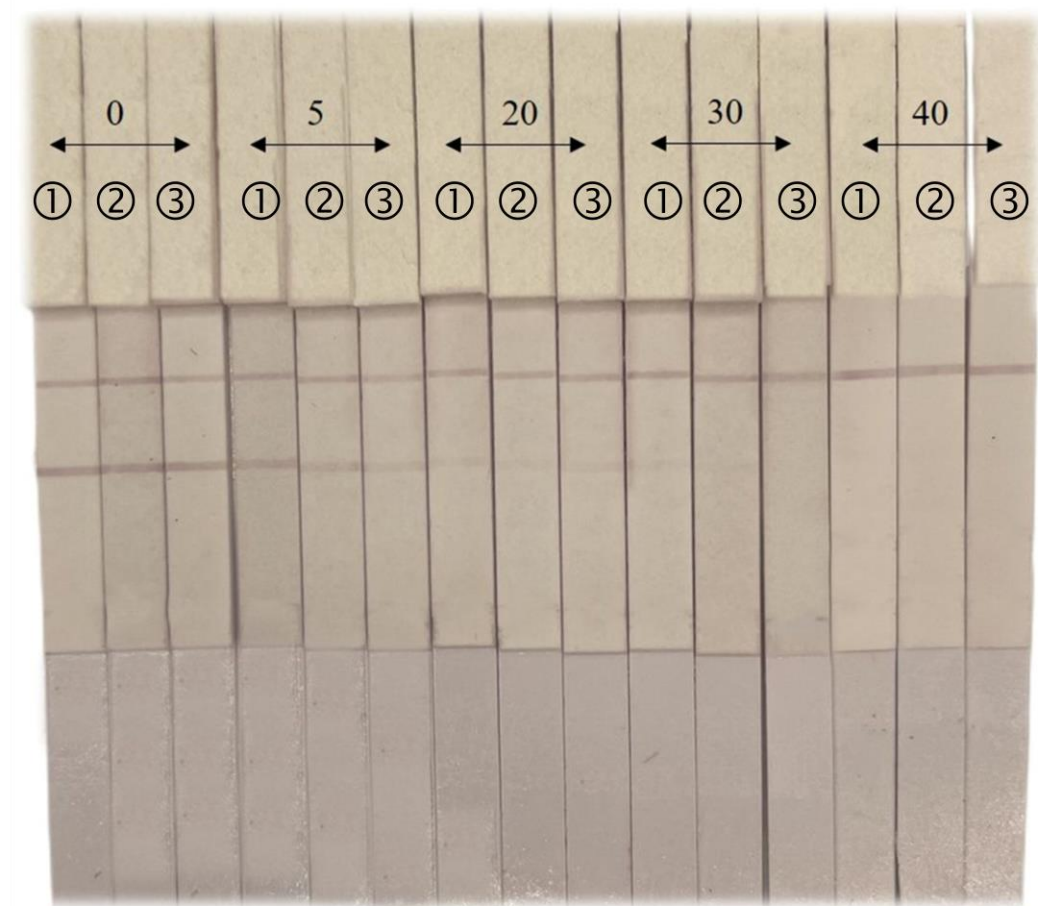
**Figure S1.** (a) Liquid chromatogram of CBD hapten; (b) HRMS of CBD hapten; (c) <sup>1</sup>H-NMR spectra of CBD hapten.



**Figure S2.** MALDI TOF spectra of (a) BSA, (b) CBD-HS-BSA, (c) OVA, and (d) CBD-HS-OVA.



**Figure S3.** Specificity of GICA strip for THC (0, 400, 600, 800, 1000, 4000, 8000, 10000 ng/mL).



**Figure S4.** Strip images of CBD in spiked wine (①), sparkling water (②) and sports drink (③) samples (0, 5, 20, 30, 40 µg/mL).