

Supplementary Material

A Smartphone-Based sEMG Signal Analysis System for Human Action Recognition

Shixin Yu ¹, Hang Zhan ¹, Xingwang Lian ¹, Sze Shin Low ², Yifei Xu ¹, Jiangyong Li ¹, Yan Zhang ¹, Xiaojun Sun ¹ and Jingjing Liu ^{1,*}

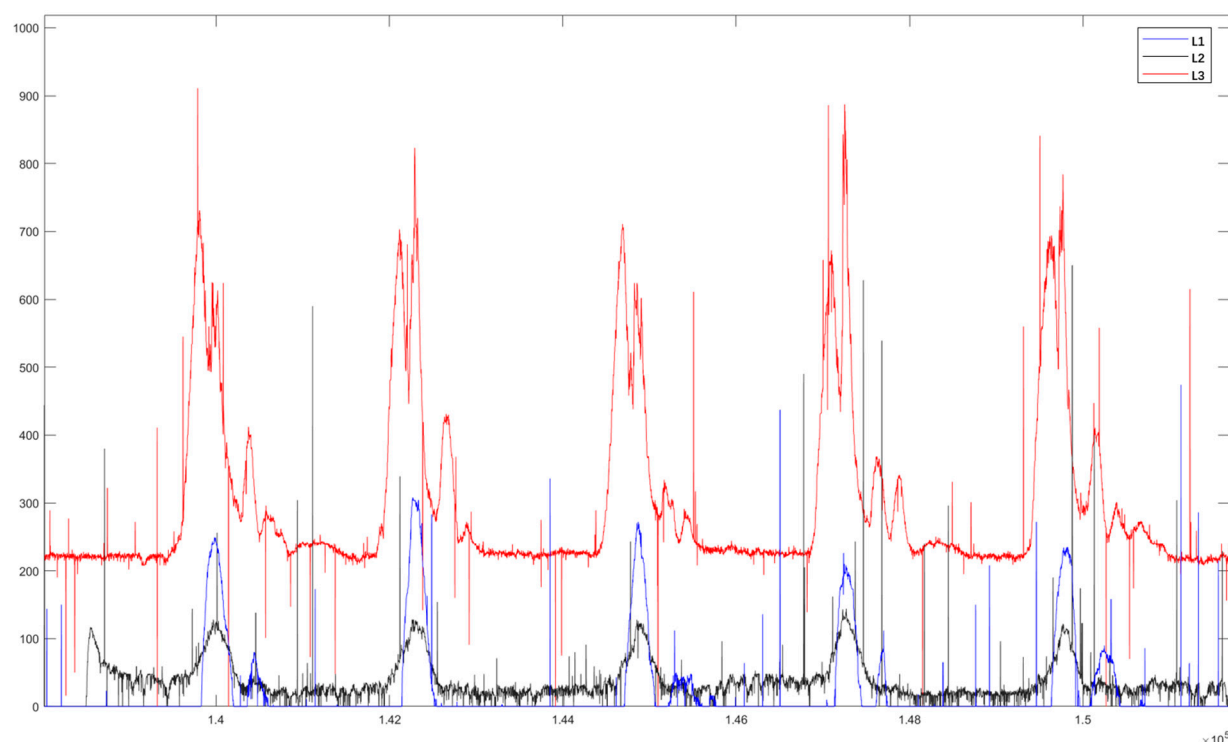


Figure S1. The original sEMG time-varying curve of A1 subject executing action 1 (red: response curve of sEMG at rectus femoris muscle; black: response curve of sEMG at tibialis anterior; blue: response curve of sEMG at gastrocnemius muscle).

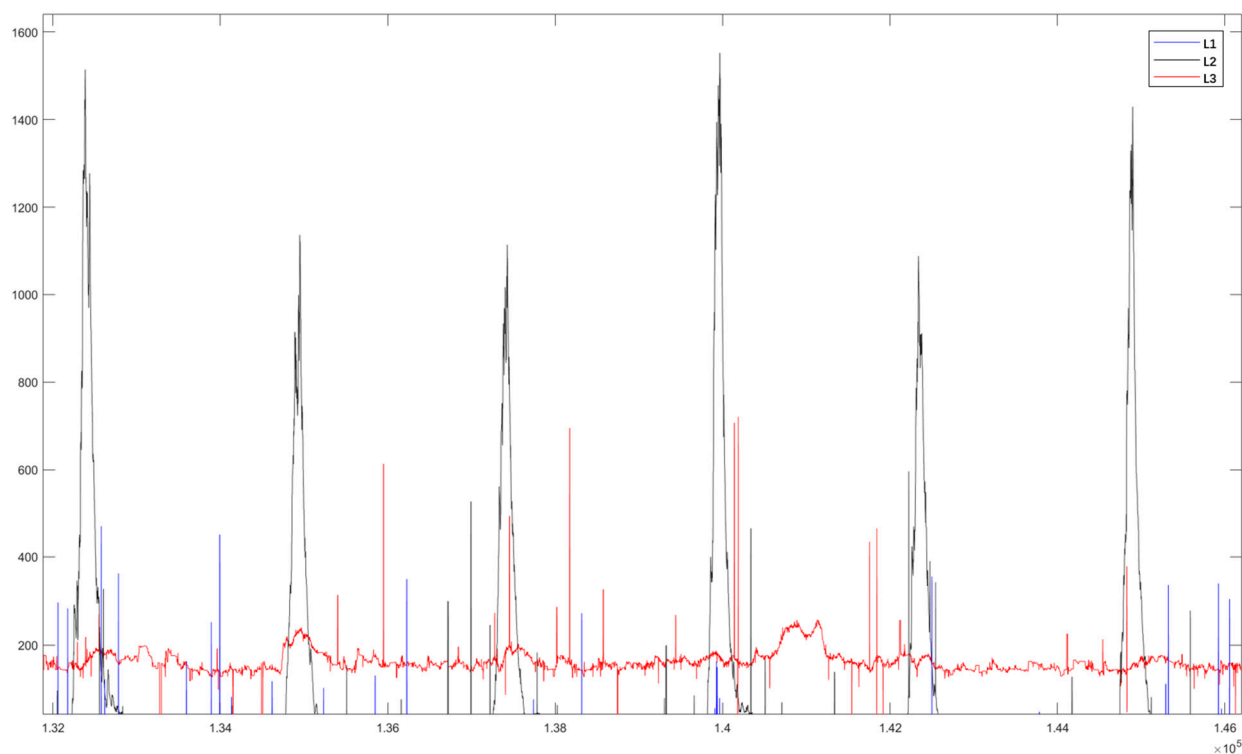


Figure S2. The original sEMG time-varying curve of A1 subject executing action 2 (red: response curve of sEMG at rectus femoris muscle; black: response curve of sEMG at tibialis anterior; blue: response curve of sEMG at gastrocnemius muscle).

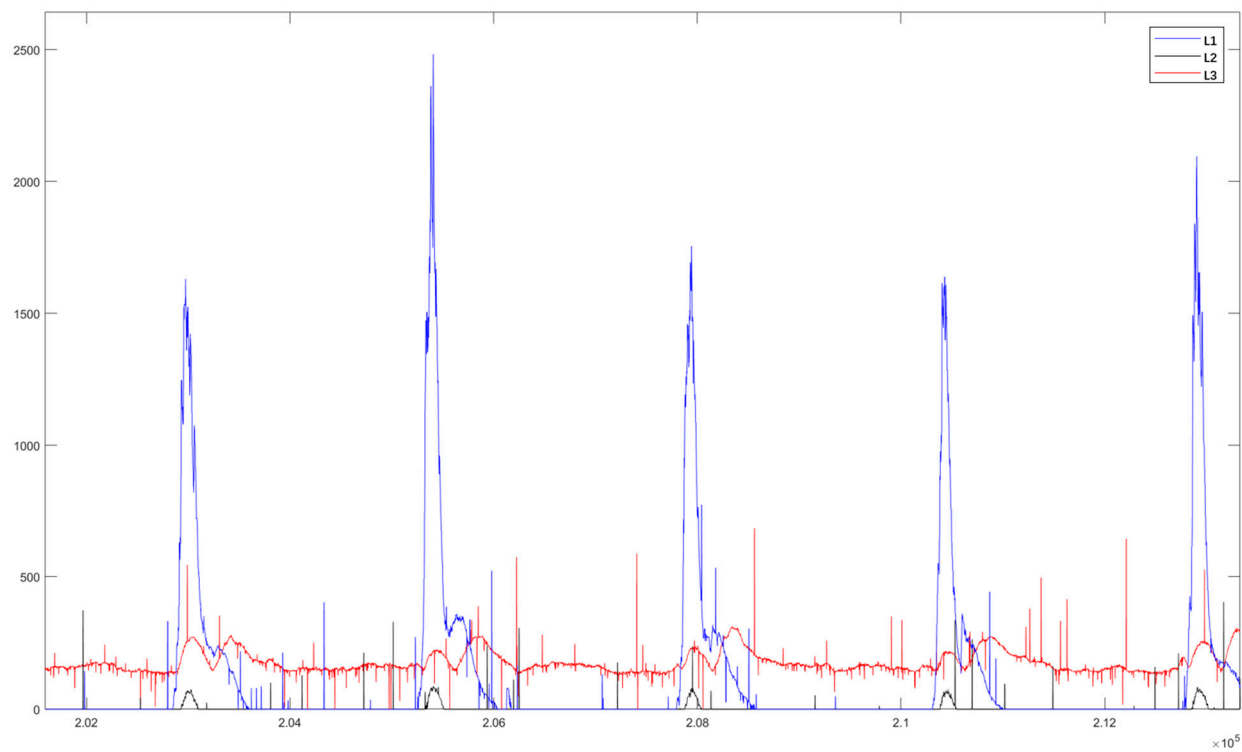


Figure S3. The original sEMG time-varying curve of A1 subject executing action 3 (red: response curve of sEMG at rectus femoris muscle; black: response curve of sEMG at tibialis anterior; blue: response curve of sEMG at gastrocnemius muscle).

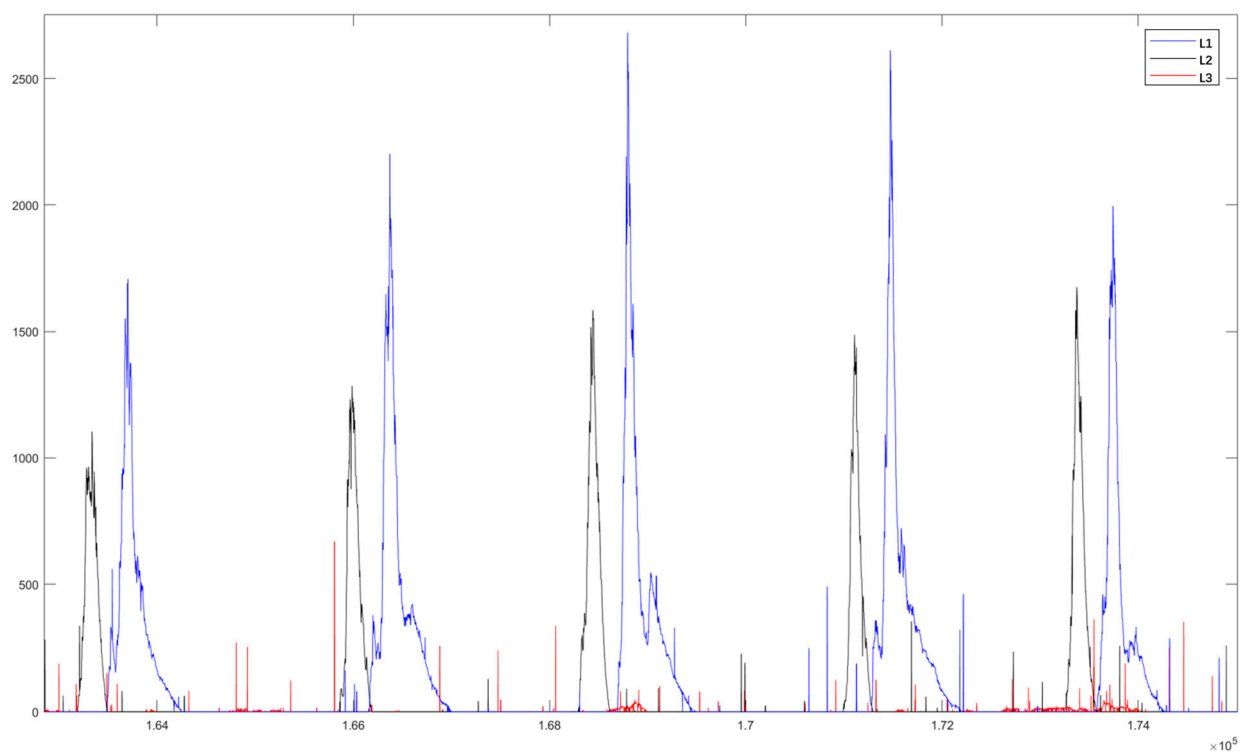


Figure S4. The original sEMG time-varying curve of A1 subject executing action 4 (red: response curve of sEMG at rectus femoris muscle; black: response curve of sEMG at tibialis anterior; blue: response curve of sEMG at gastrocnemius muscle).

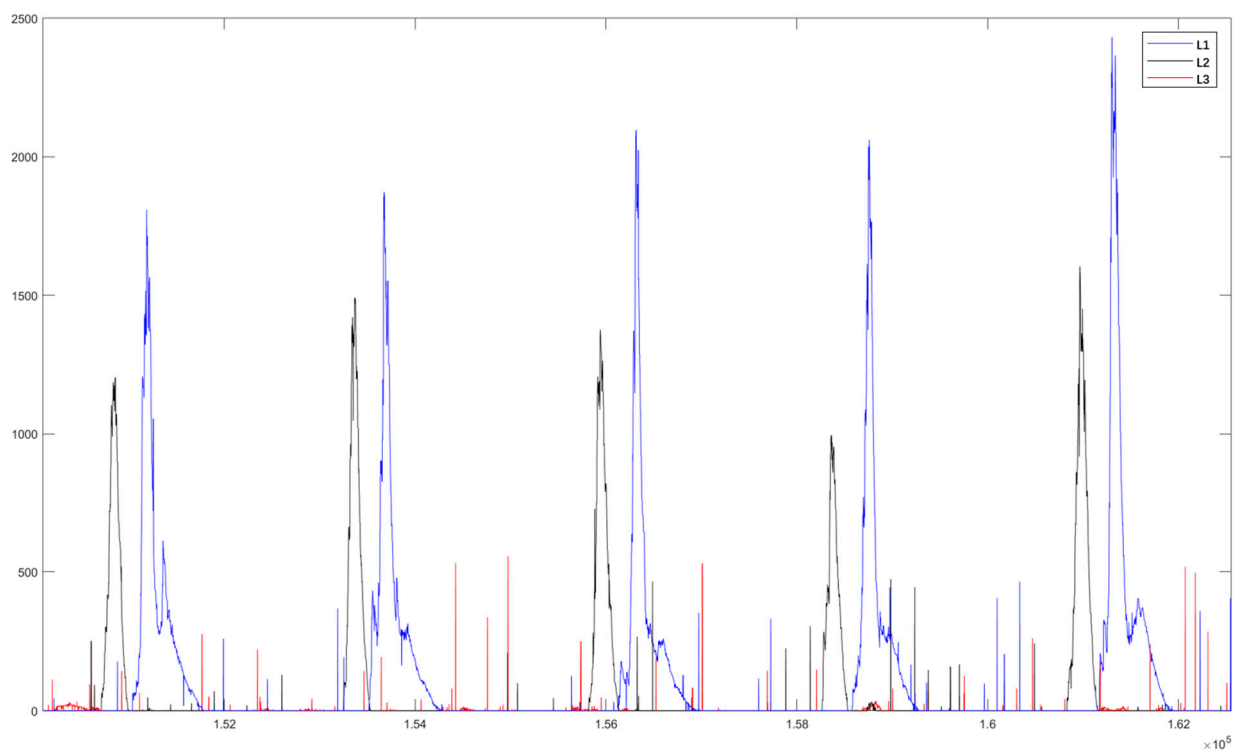


Figure S5. The original sEMG time-varying curve of A1 subject executing action 5 (red: response curve of sEMG at rectus femoris muscle; black: response curve of sEMG at tibialis anterior; blue: response curve of sEMG at gastrocnemius muscle).

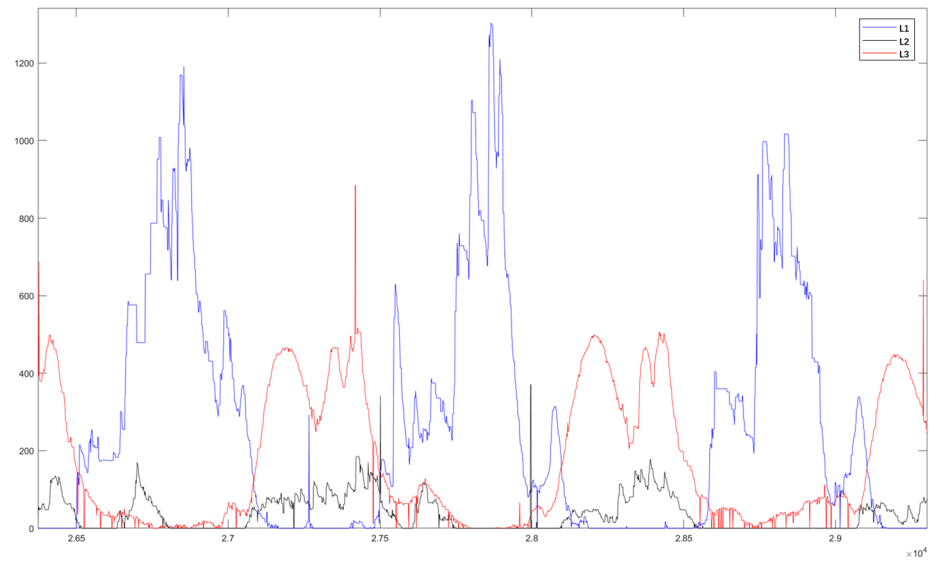


Figure S6. The original sEMG time-varying curve of A1 subject executing action 6 (red: response curve of sEMG at rectus femoris muscle; black: response curve of sEMG at tibialis anterior; blue: response curve of sEMG at gastrocnemius muscle).

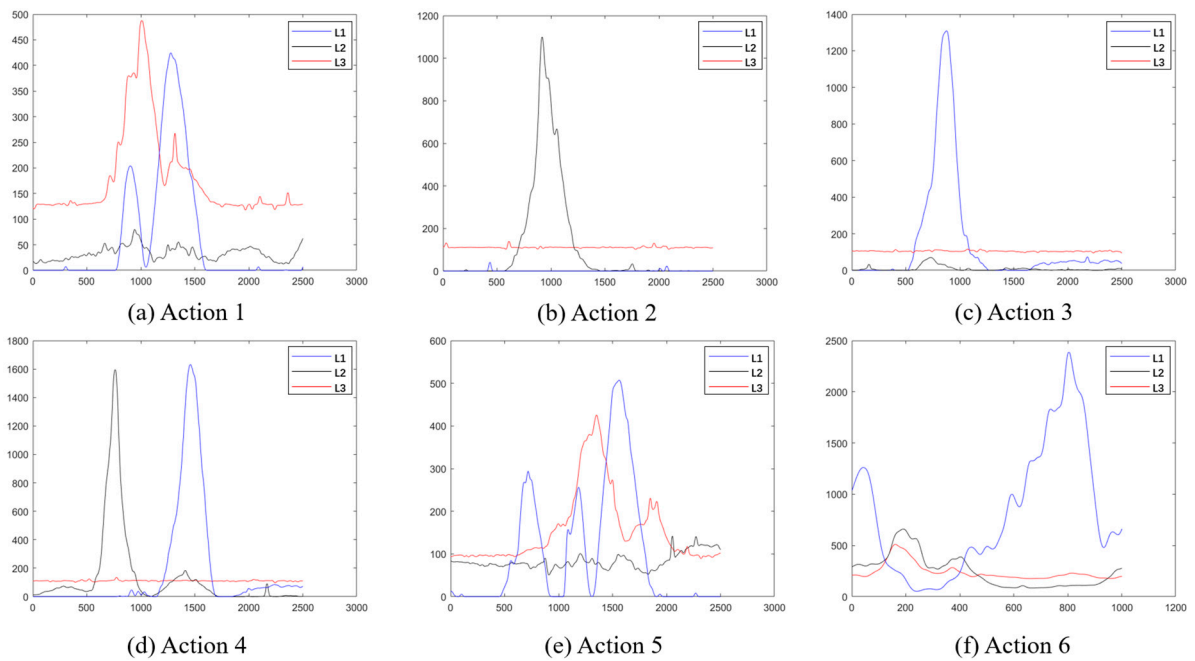


Figure S7. Filtered response curve of sEMG signals of subject A2 executing each action (red: response curve of sEMG at rectus femoris muscle; black: response curve of sEMG at tibialis anterior; blue: re-sponse curve of sEMG at gastrocnemius muscle).

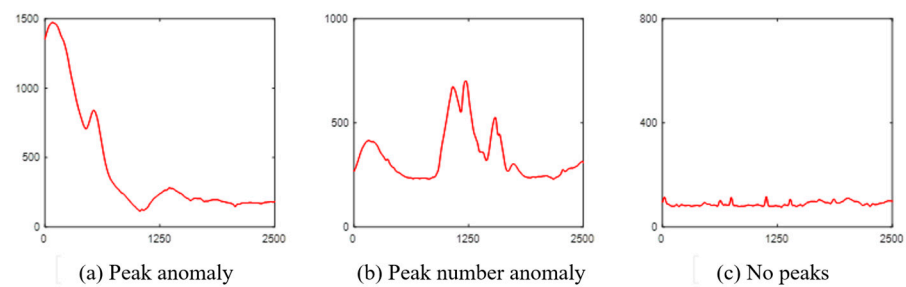


Figure S8. Abnormal samples waveform.