

Supplementary Materials

The Dual-Targeted Peptide Conjugated Probe for Depicting Residual Nasopharyngeal Carcinoma and Guiding Surgery

Wenhui Huang ^{1,2,3}, Zicong He ², Xuekang Cai ⁴, Jingming Zhang ⁴, Wei Li ^{2,3}, Kun Wang ^{3,*} and Shuixing Zhang ^{2,*}

¹ College of Medicine and Biological Information Engineering, Northeastern University, Shenyang 110167, China

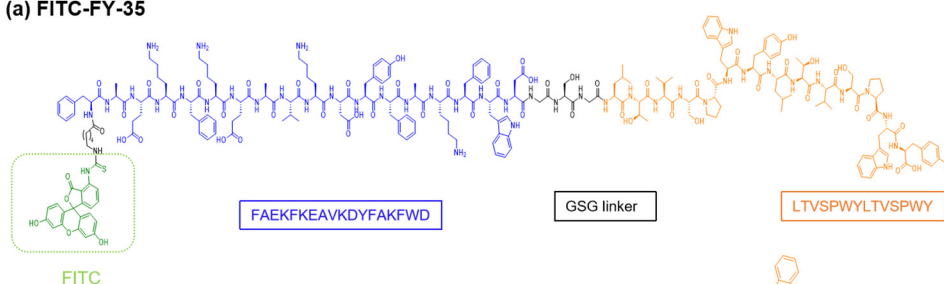
² Medical Imaging Center, the First Affiliated Hospital, Jinan University, Guangzhou 510630, China

³ CAS Key Laboratory of Molecular Imaging, the State Key Laboratory of Management and Control for Complex Systems, Institute of Automation, Chinese Academy of Sciences, Beijing 100190, China

⁴ Department of Nuclear Medicine, Peking University First Hospital, Beijing 100034, China

* Correspondence: kun.wang@ia.ac.cn (K.W.); zsx7515@jnu.edu.cn (S.Z.); Tel.: +86-13544597585 (S.Z.); +86-18612965656 (K.W.)

(a) FITC-FY-35



(b) FITC-FL-35

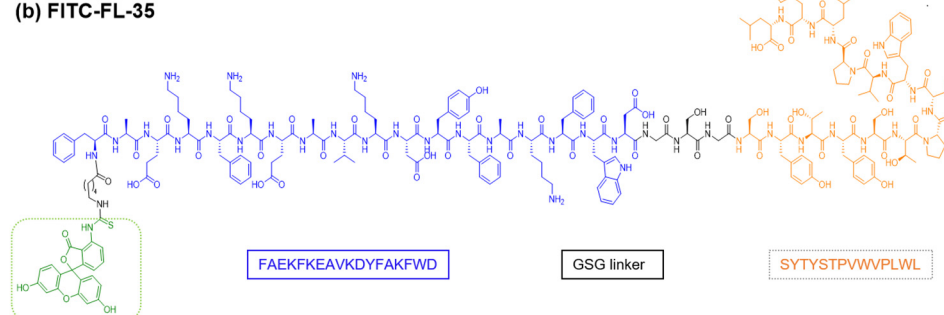


Figure S1. The chemical structure of FITC-FY-35 and FITC-FL-35.

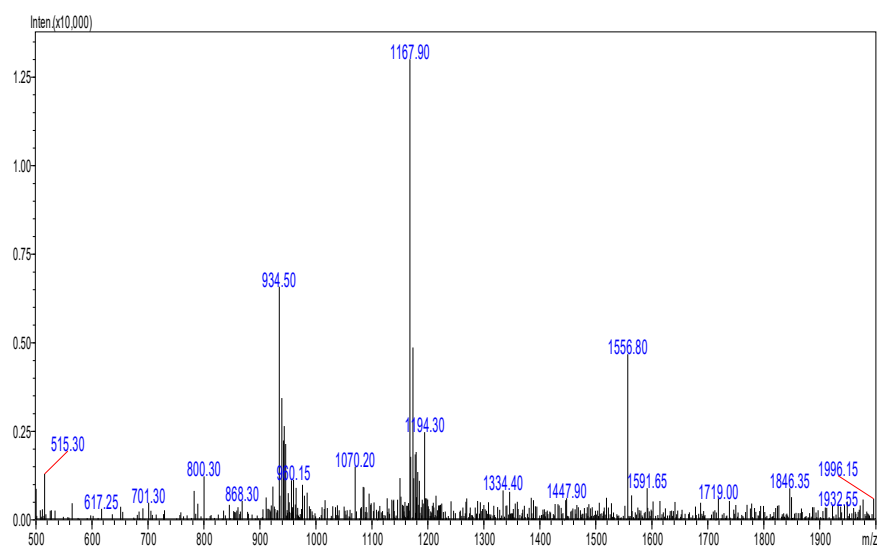


Figure S2. Mass spectra of FITC-FY-35.

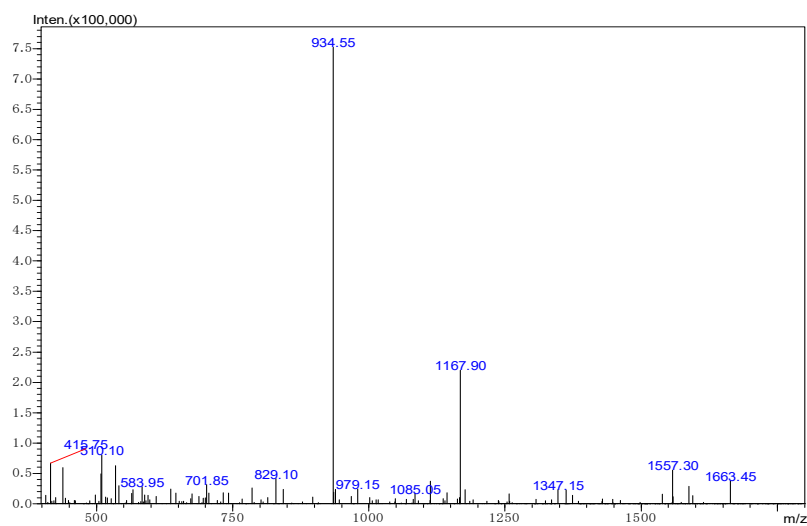


Figure S3. Mass spectra of FITC-FL-35.

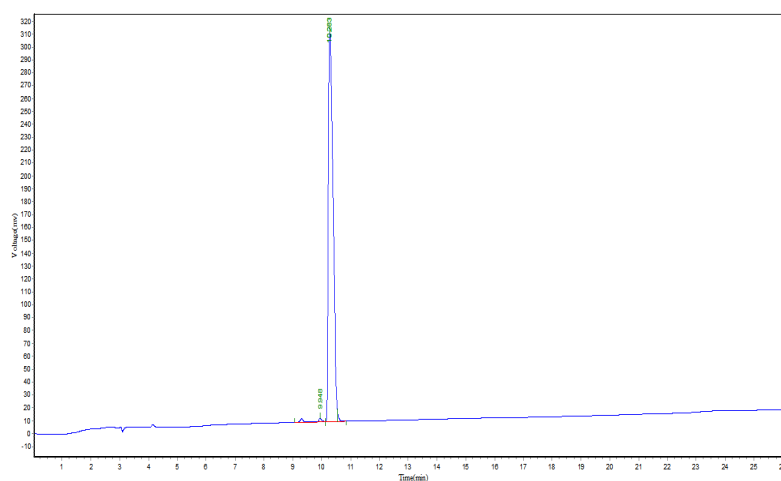


Figure S4. HPLC for FITC-FY-35.

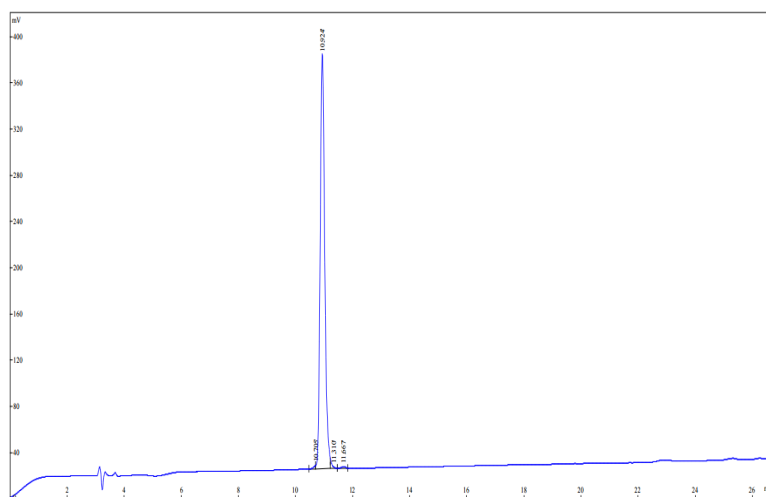


Figure S5. HPLC for FITC-FL-35.

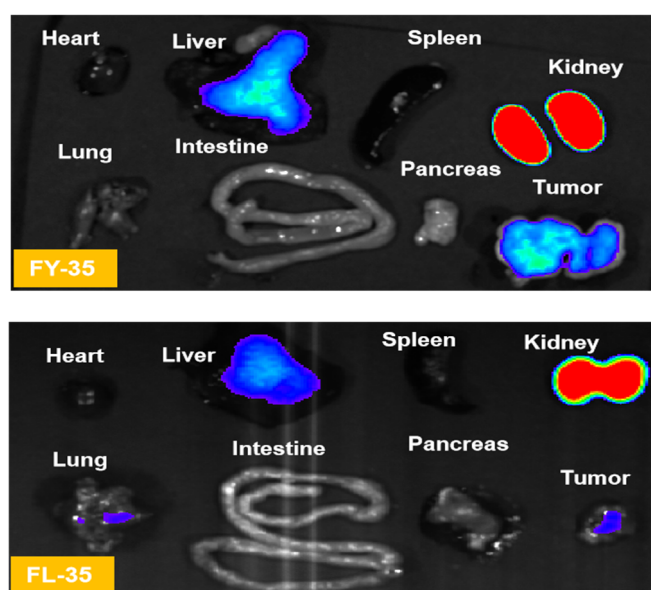


Figure S6. *Ex vivo* fluorescent imaging for the resected organs and tumours in two groups.