

Supporting Information

# Multiplexed, High-Sensitivity Measurements of Antibody Affinity Using Interferometric Reflectance Imaging Sensor

Allison M. Marn <sup>1,\*</sup>, James Needham <sup>2</sup>, Elisa Chiodi <sup>3</sup> and M. Selim Ünlü <sup>3,4</sup>

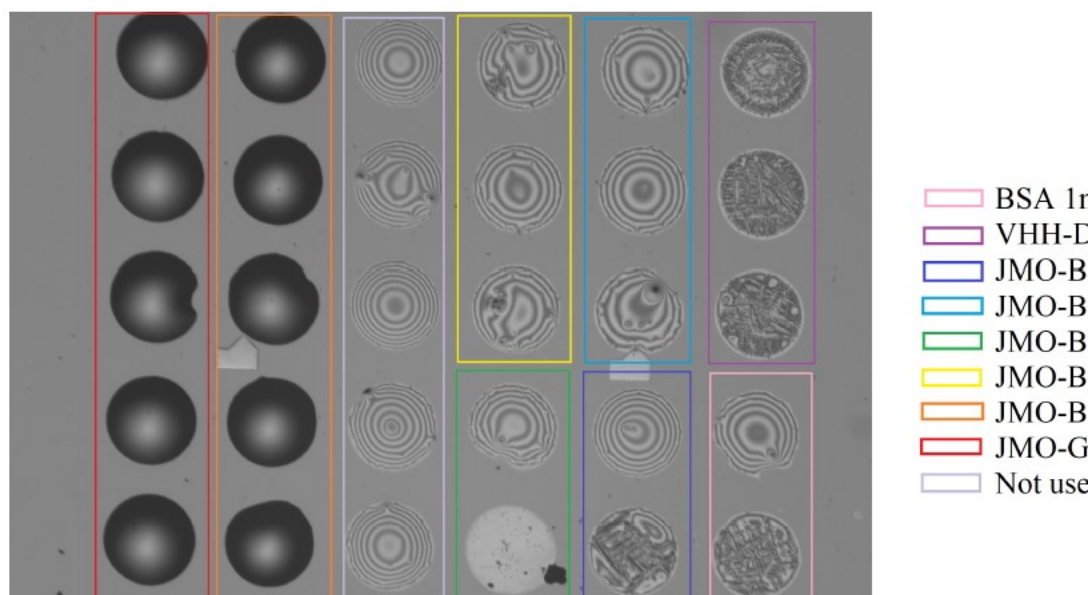
<sup>1</sup> School of Engineering, Computing, and Construction Management, Roger Williams University, Bristol, RI 02809, USA

<sup>2</sup> InBios International, Inc., Seattle, WA 98109, USA; james@inbios.com

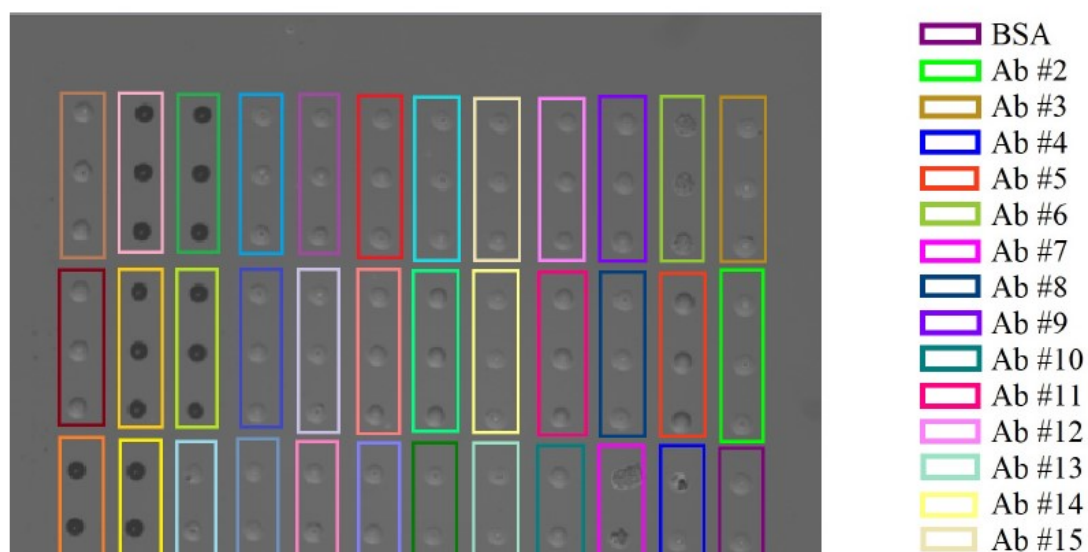
<sup>3</sup> Department of Electrical Engineering, Boston University, Boston, MA 02215, USA; elich@bu.edu (E.C.); selim@bu.edu (M.S.Ü.)

<sup>4</sup> Department of Biomedical Engineering, Boston University, Boston, MA 02215, USA

\* Correspondence: amarn@rwu.edu



**Figure S1.** IRIS image showing the spotting scheme used for the experiments show in Figures 2–4.



**Figure S2.** IRIS image showing the spotting scheme used for the experiments show in Figure 5.