

S-Figure.1

A

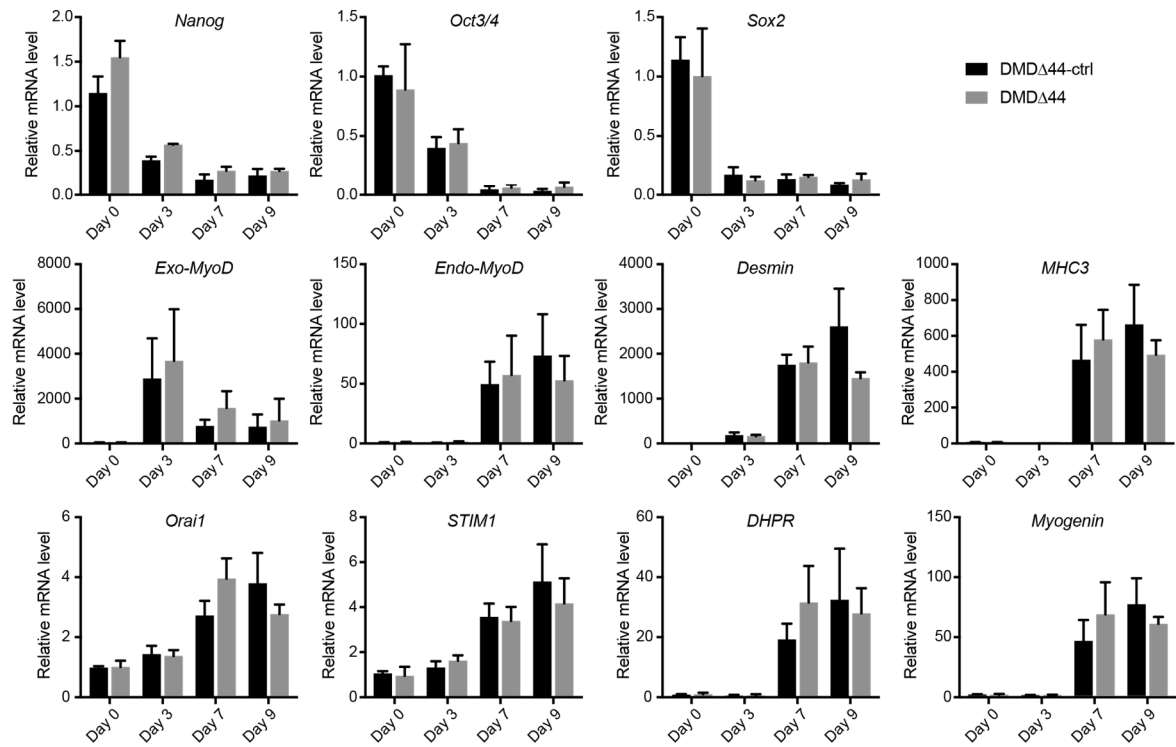


Figure S1. Gene expression analyses of hiPSC-skeletal myotubes differentiated by the standard replating method. (A) RT-qPCR analysis of *Nanog*, *Oct3/4*, *Sox2*, exogenous-*MyoD*, endogenous-*MyoD*, *Desmin*, *MHC2*, *Orai1*, *STIM1*, *DHPR* and *Myogenin* of DMD Δ 44-ctrl and DMD Δ 44 myotubes differentiated by the standard replating method. Data represent the mean \pm SD and were analyzed with an unpaired *t*-test from three biological replicates. * indicates $P < 0.05$.

S-Figure.2

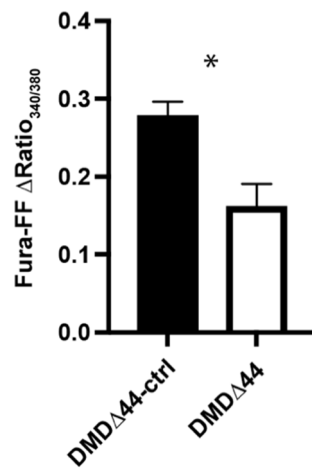


Figure S1. Total releasable Ca^{2+} store content analyses of hiPSC-skeletal myotubes. Data represent the mean \pm SD and were analyzed with an unpaired t -test from three biological replicates. * indicates $P < 0.05$.

S-Figure.3

A

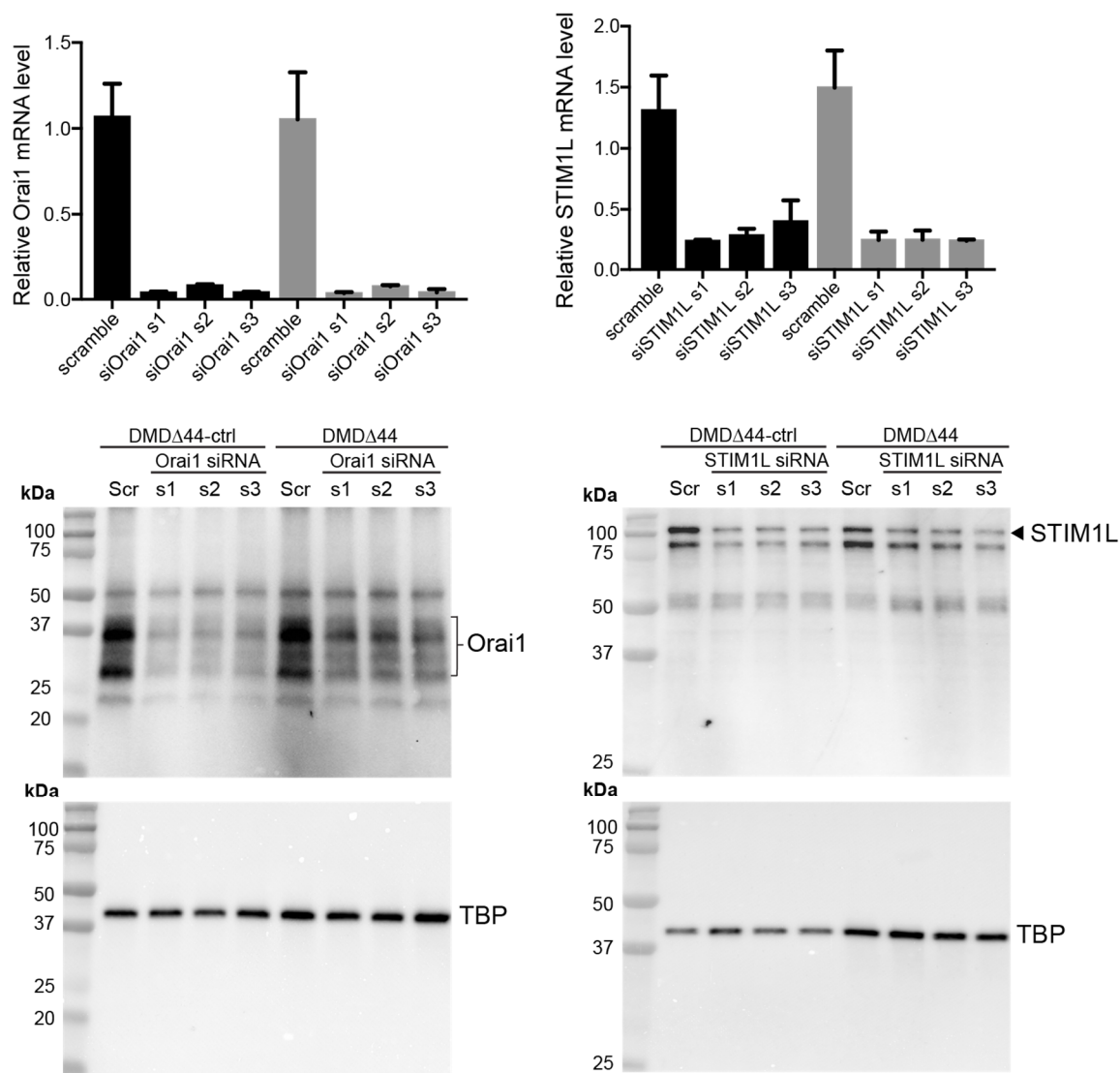


Figure S3. siRNA-mediated Orai1 and STIM1L knock-down on differentiated myotubes by the modified replating. siRNA-mediated Orai1 and STIM1 knock-down was confirmed by (A) RT-qPCR analysis and (B) Western blot.