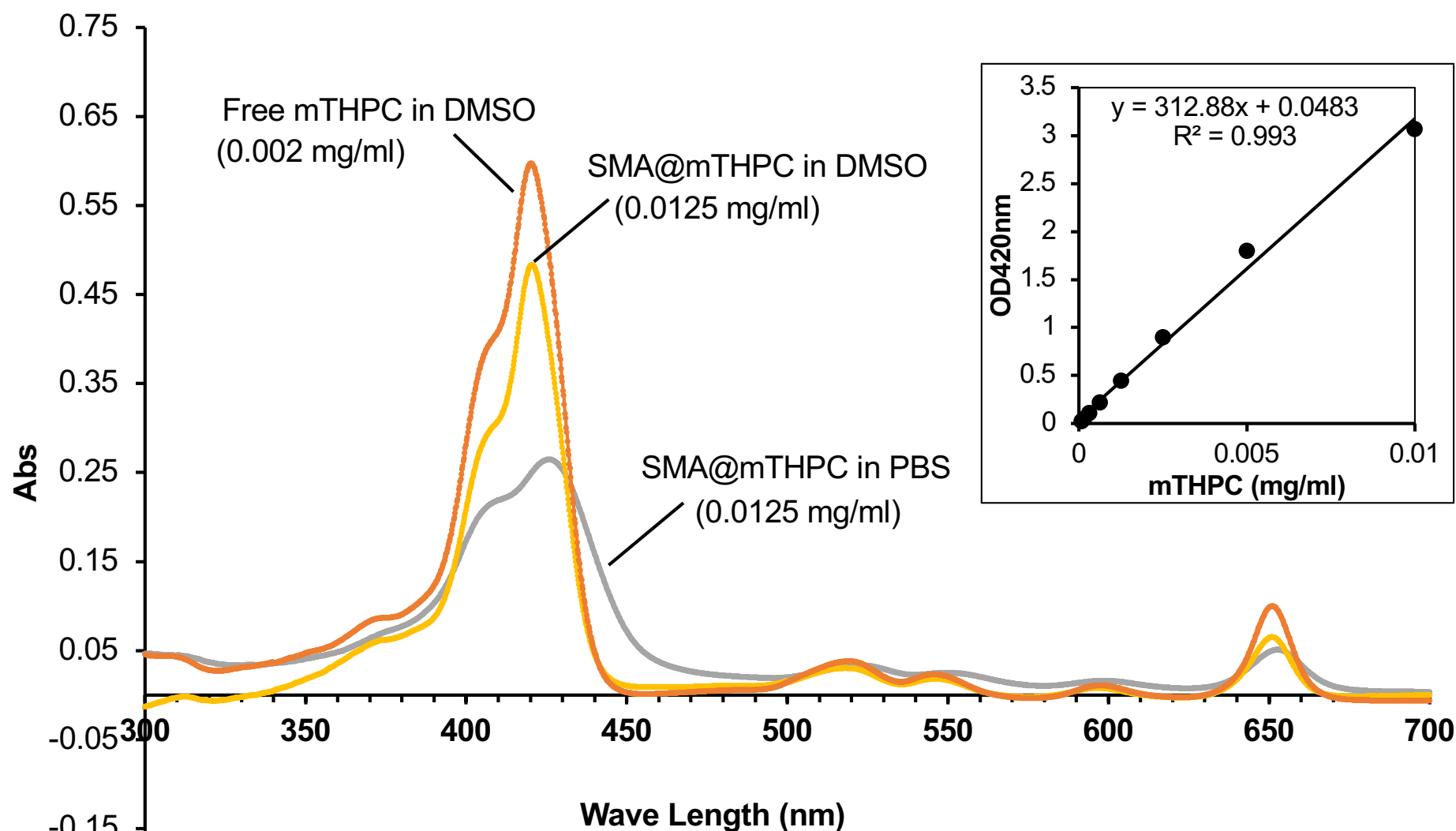
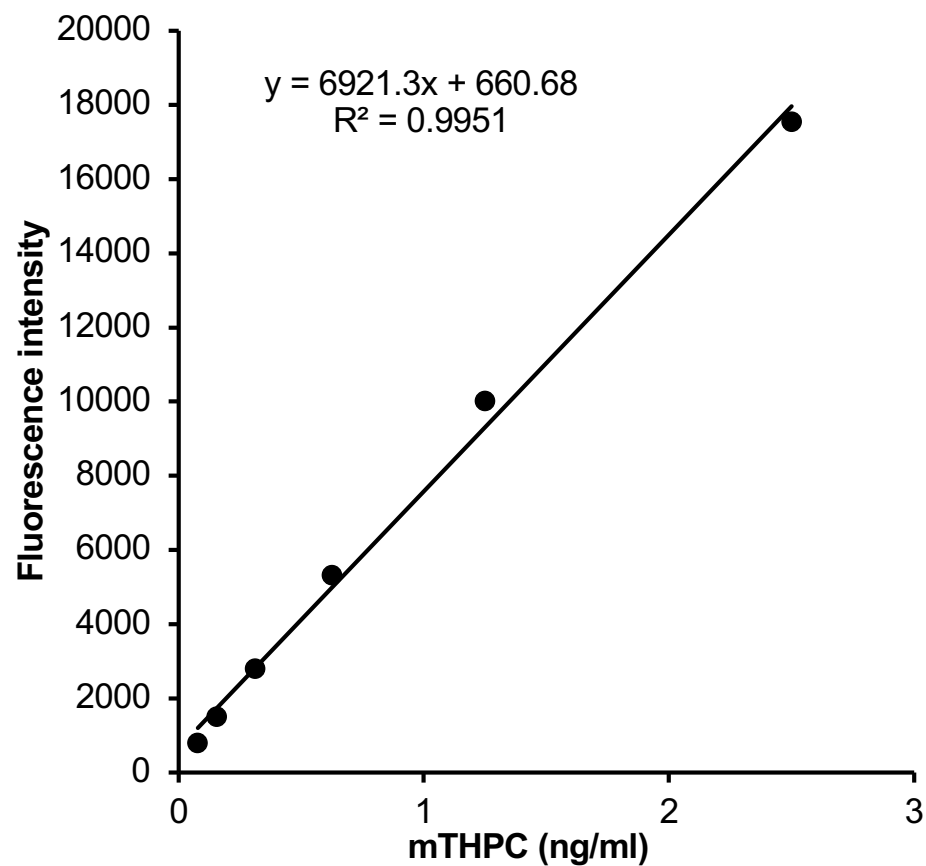


## Supplementary data Figure S1



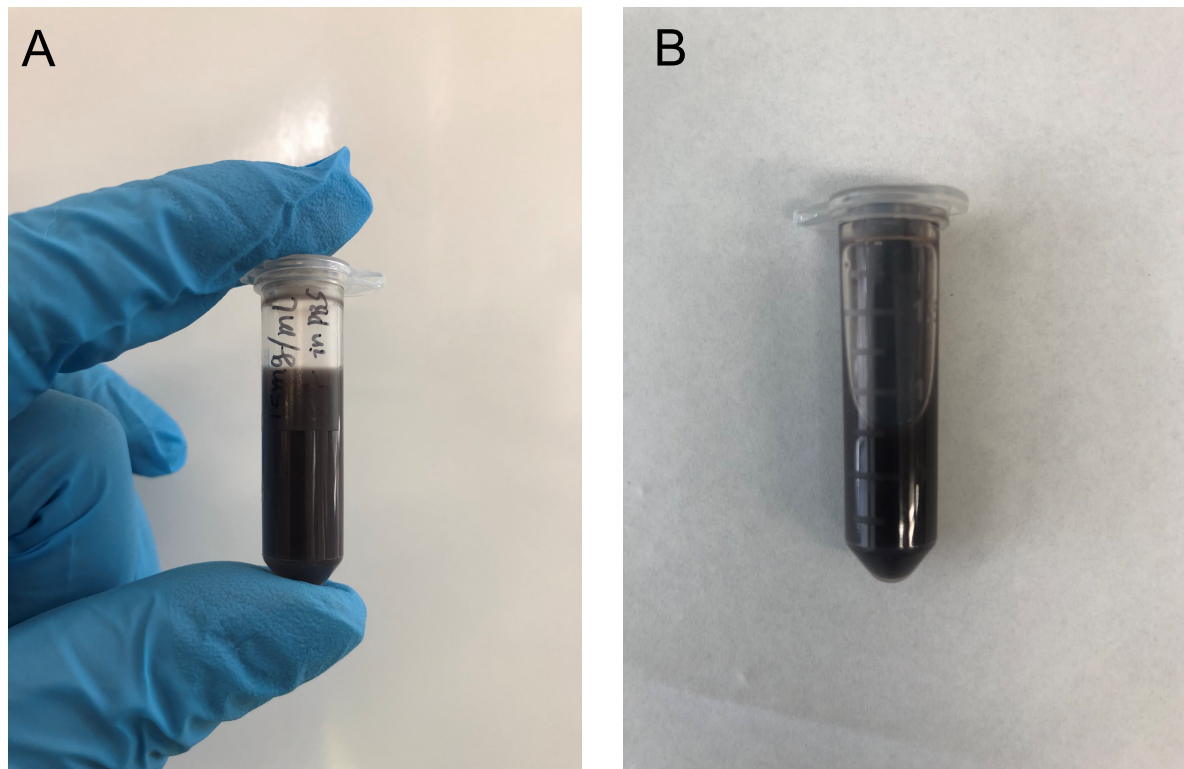
**Figure S1.** UV-vis spectra of SMA@mTHPC and free mTHPC. Inset shows the standard curve of mTHPC, by which the mTHPC loading in SMA@mTHPC was calculated as 10%.

## Supplementary data Figure S2



**Figure S2.** Standard curve of mTHPC in DMSO as measured by fluorescence (Ex420nm/Em590nm).

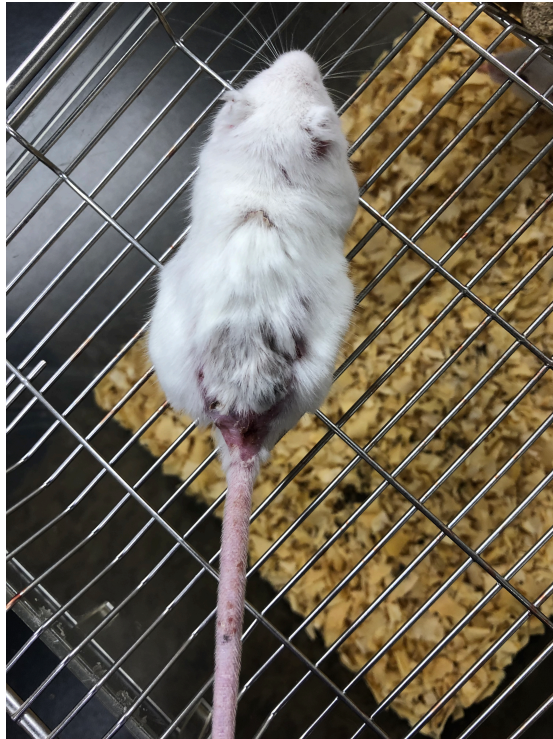
## Supplementary data Figure S3



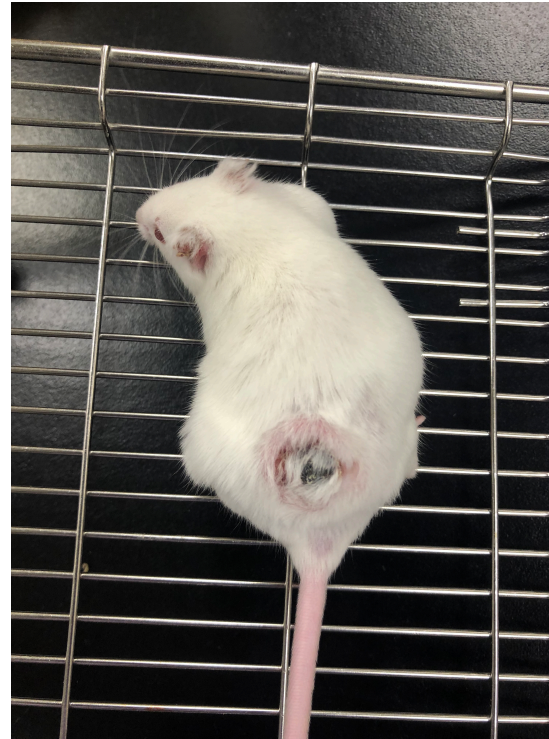
**Figure S3.** Pictures of SMA@mTHPC solution in PBS at 20 mg/ml before (A) and after centrifugation (12000 rpm, 1 min) (B).

## Supplementary data Figure S4

Free mTHPC-treated mice

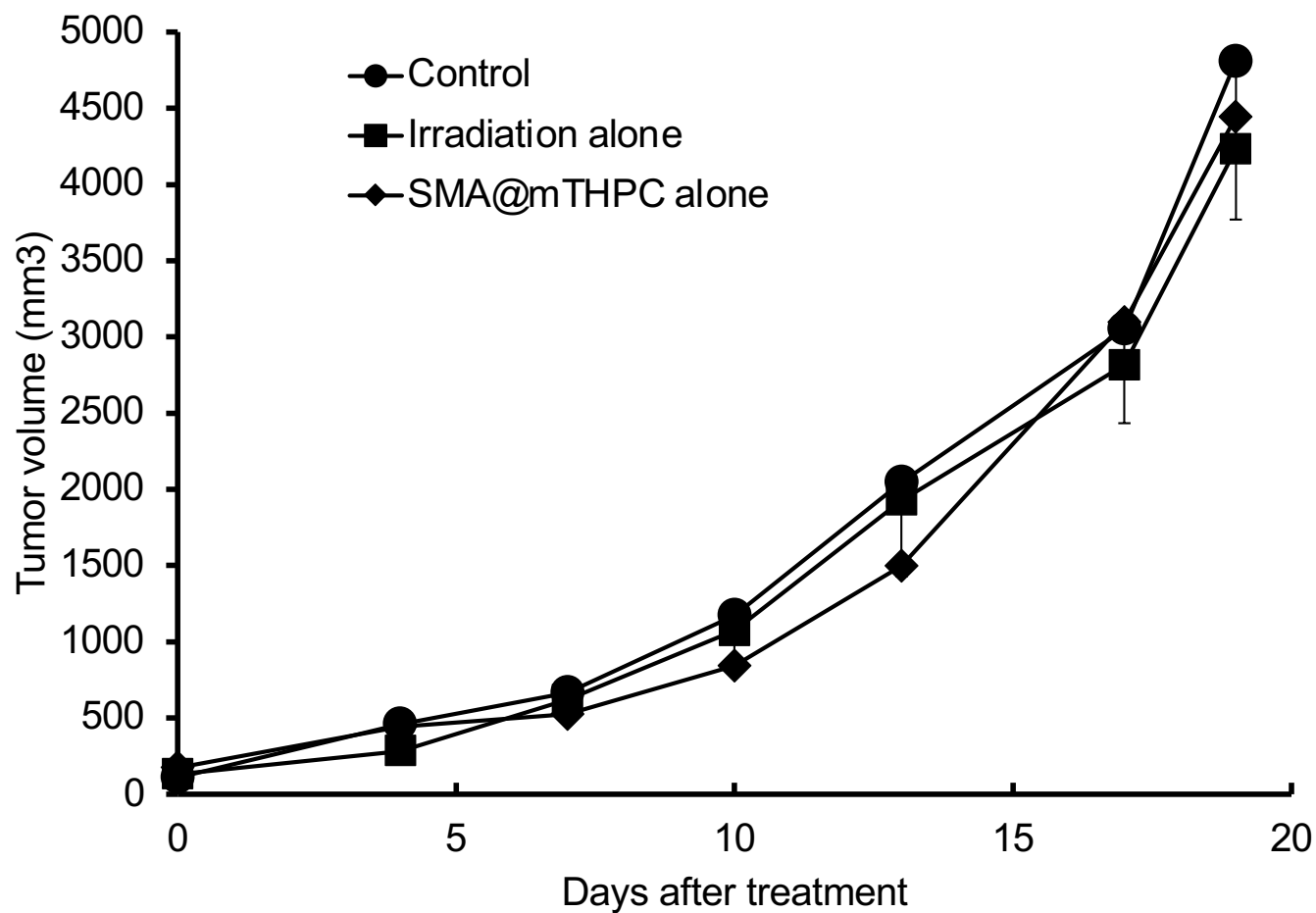


SMA@mTHPC-treated mice



**Figure S4.** Pictures of mice after free mTHPC treatment and SMA@mTHPC treatment.

# Supplementary data Figure S5



**Figure S5.** *In vivo* antitumor effect of irradiation alone (without SMA@mTHPC) and SMA@mTHPC alone (without light irradiation).