

Supplementary Information regarding chemical structure of SM-102, spermine, and glyceryl nonivamide (GLNVA) used in this study

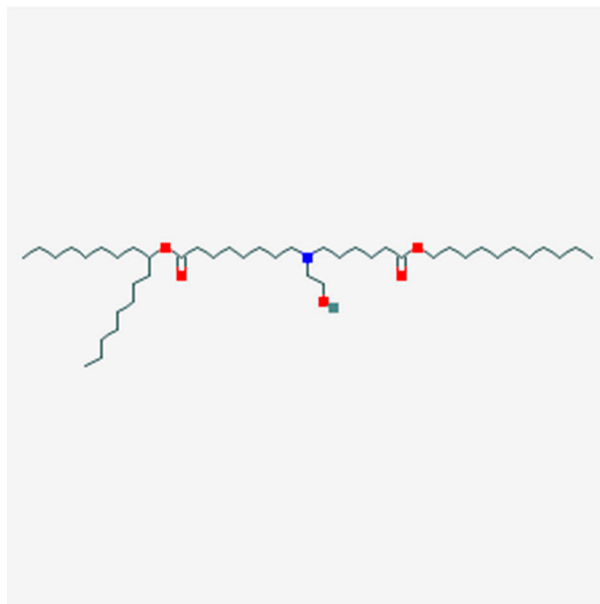


Figure S1. Chemical structure for SM-102 (heptadecan-9-yl 8-((2-hydroxyethyl)(6-oxo-6-(undecyloxy)hexyl)amino)octanoate, 4-hydroxybutyl)azanediyl)bis(hexane-6,1-diyl)bis(2-hexyldecanoate, 1-octylnonyl 8-[(2-hydroxyethyl)[6-oxo-6-(undecyloxy)hexyl]amino]-octanoate). The structure was originally derived from <https://pubchem.ncbi.nlm.nih.gov/compound/126697616>.

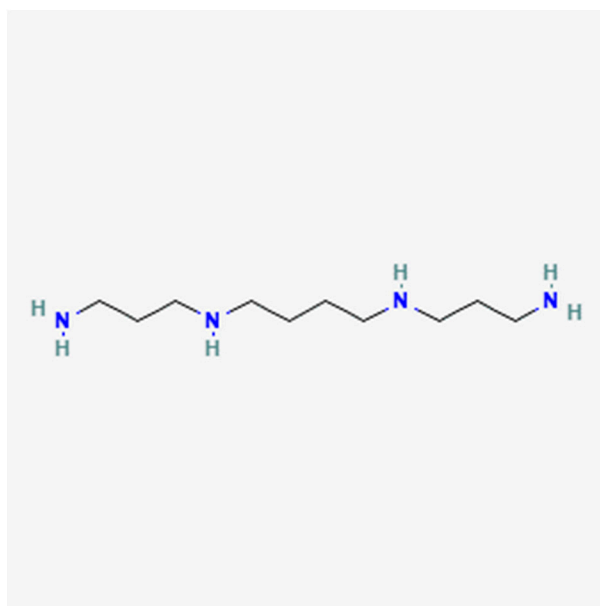


Figure S2. Chemical structure for spermine (N,N'-bis(3-aminopropyl)-1,4-diaminobutane). The structure was originally derived from <https://pubchem.ncbi.nlm.nih.gov/compound/126697616>.<https://pubchem.ncbi.nlm.nih.gov/compound/1103>.

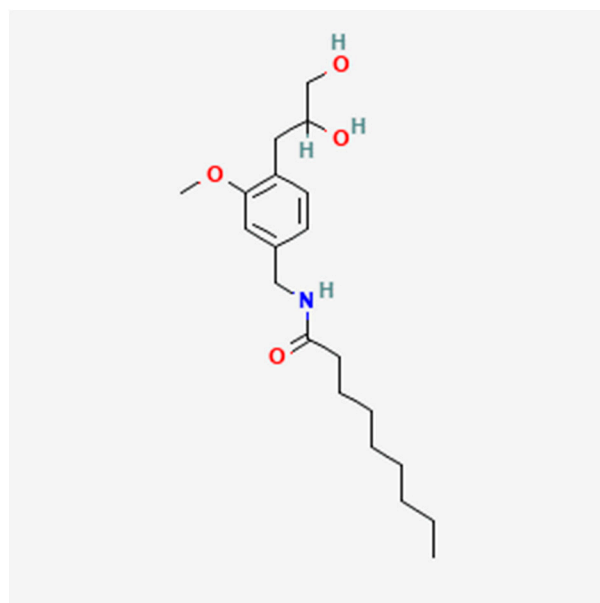


Figure S3. Chemical structure of glyceryl nonivamide (GLNVA). The structure was originally derived from <https://pubchem.ncbi.nlm.nih.gov/compound/3035784>.