

Syndecan-1 Expression is Increased in the Aortic Wall of Patients with Type 2 Diabetes but is Unrelated to Elevated Fasting Plasma Glucagon-like Peptide-1

Ntika et. al

Figures

3. Results

3.1 Type 2 Diabetes is associated with decreased plasma Sdc-1 and increased expression of Sdc-1 in aortic tissue.

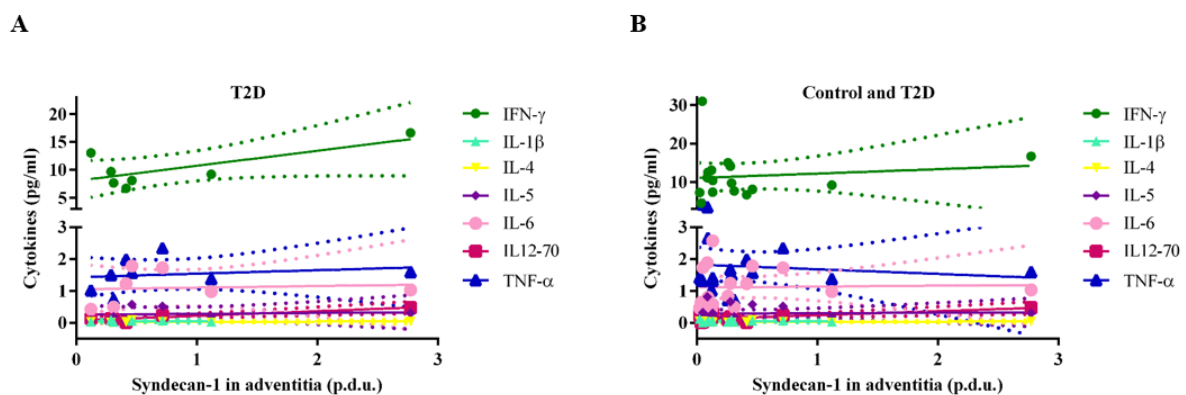


Figure S1. Graphical representation of Table 2. Correlations of Sdc-1 in adventitia with different cytokines in patients with (A) T2D or (B) in combination Control and T2D patients. Pearson correlation was used for the evaluation of the correlations. $n = 10$ for Control and $n = 9$ for T2D.

3.3 The Sdc-1 is increased in aortic tissue of patients with ascending AA.

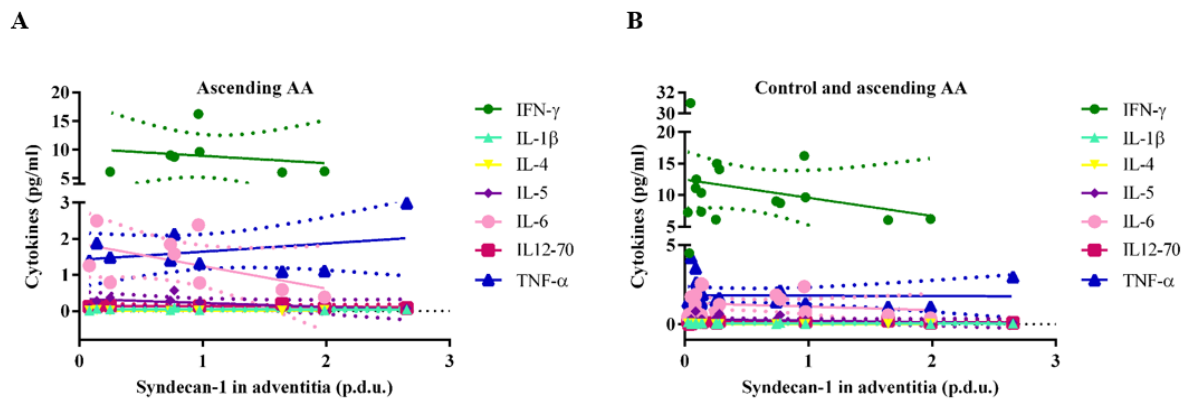


Figure S2. Graphical representation of Table 3. Associations of Sdc-1 in adventitia with different cytokines in patients with (A) ascending AA or (B) in combination Control and ascending AA patients. Pearson correlation was used to evaluate any associations. $n = 10$ for Control and $n = 10$ for ascending AA.

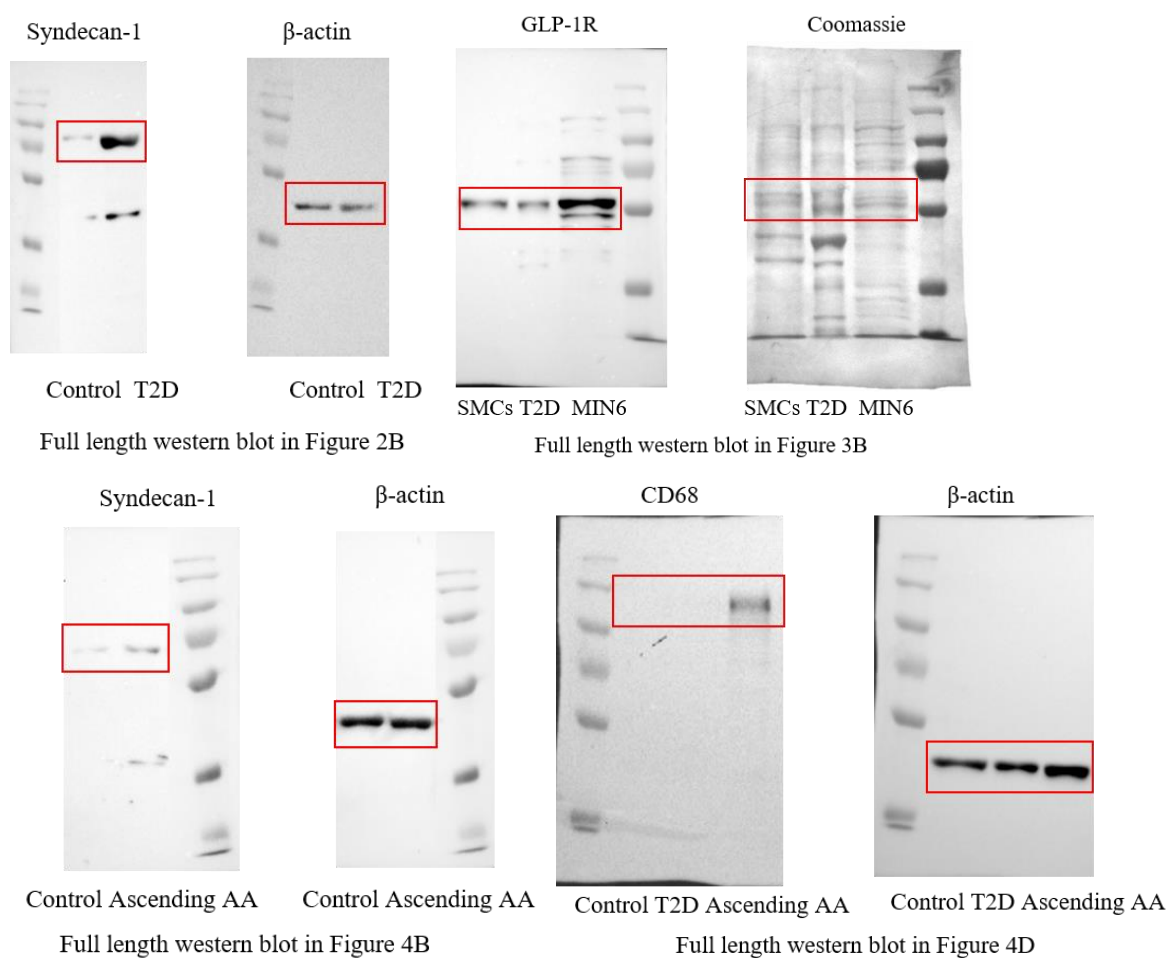


Figure S3. Full length western blots