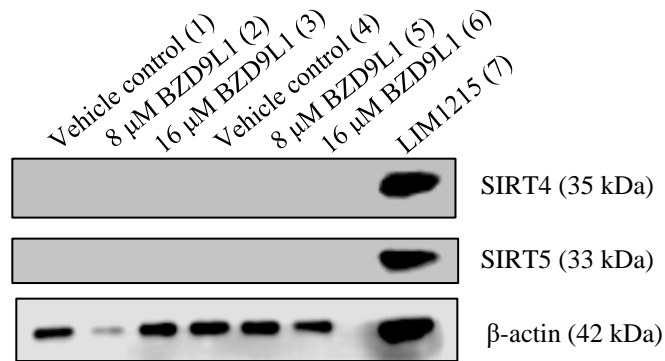


Supplementary Figure

a) THLE-2



b) HEK293



Supplementary Figure S1. Representative western blots showing proteins levels of SIRT4 and SIRT5 in THLE-2 and HEK293 cells upon BZD9L1 treatment for 24 h (lane 1–3) and 72 h (lane 4–6), $n = 3$ independent experiments. β -actin was used as a loading control. LIM1215 colorectal cancer cells were used as a positive control to confirm the validity of the SIRT4 and SIRT5 antibodies.