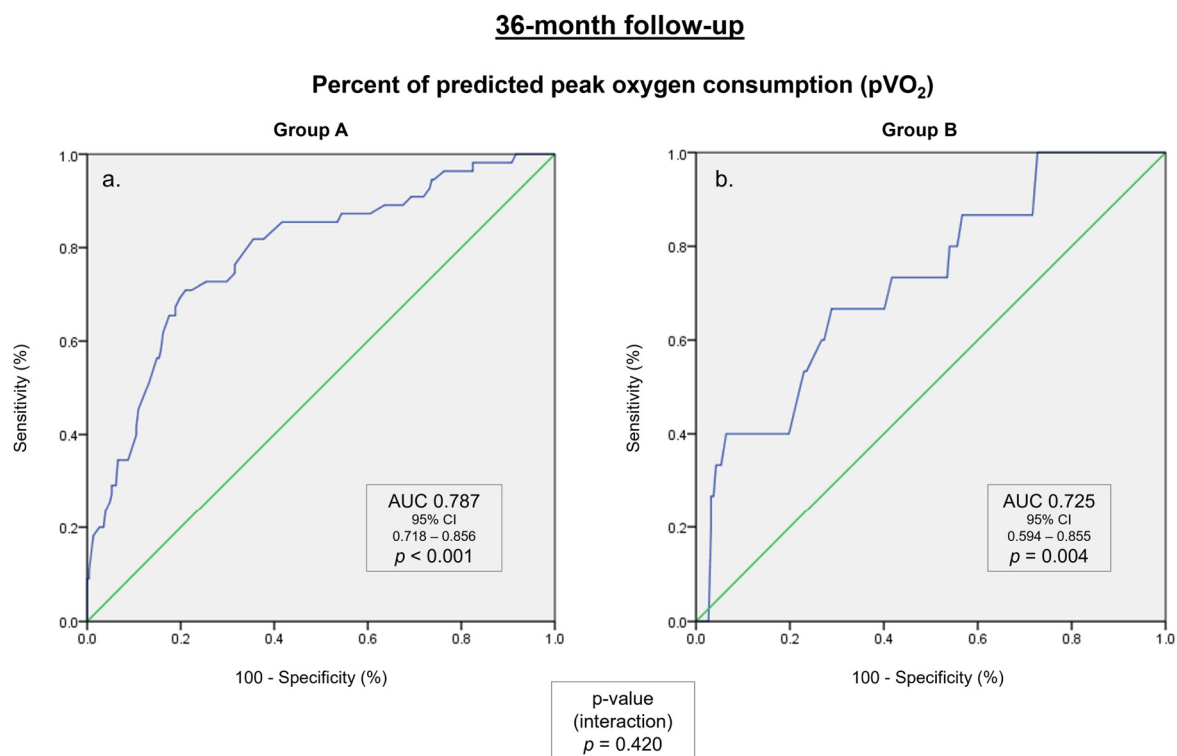
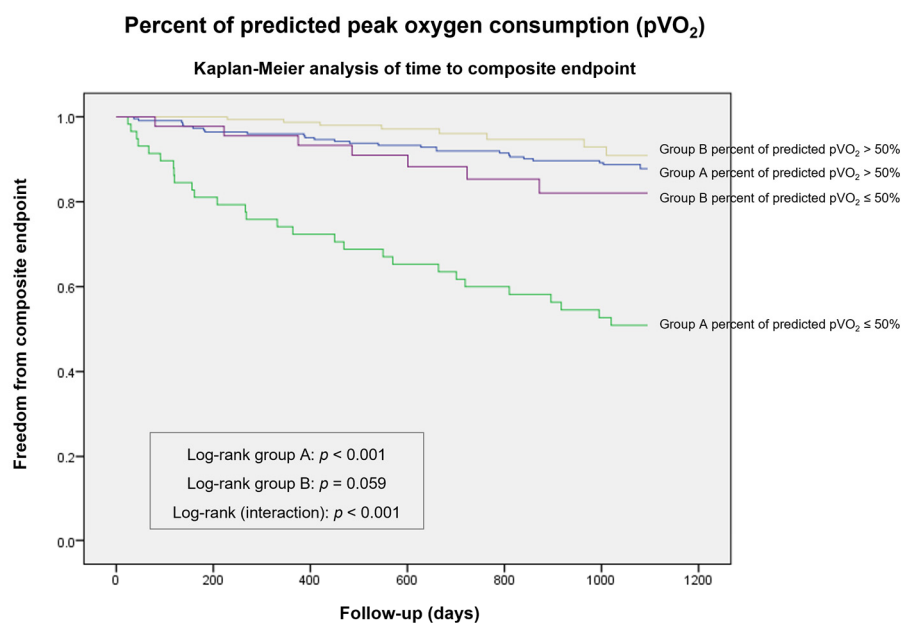


# Supplementary Materials



**Figure S1.** ROC curves for the composite endpoint in a 36-month follow-up. (a) Percent of predicted peak oxygen consumption (pVO<sub>2</sub>) in group A. (b) Percent of predicted pVO<sub>2</sub> in group B.

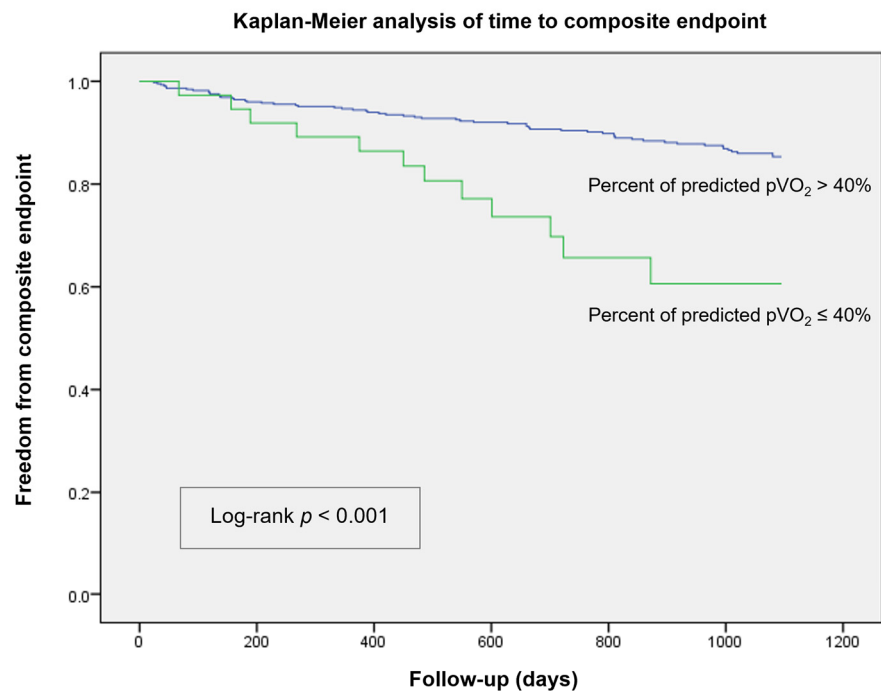


No. at risk

Group A percent of predicted $pVO_2 \leq 50\%$	58	47	42	38	35	31	30
Group A percent of predicted $pVO_2 > 50\%$	225	217	214	210	206	201	198
Group B percent of predicted $pVO_2 \leq 50\%$	45	44	42	41	39	38	38
Group B percent of predicted $pVO_2 > 50\%$	159	159	157	155	153	152	151

**Figure S2.** Kaplan–Meier survival analysis for the composite endpoint in a 36-month follow-up stratified according to the International Society for Heart and Lung Transplantation (ISHLT)-recommended threshold of percent of predicted peak oxygen consumption ( $pVO_2$ )  $\leq 50\%$  in group A and group B.

### Percent of predicted peak oxygen consumption ( $pVO_2$ )



**Figure S3.** Kaplan–Meier survival analysis for the composite endpoint in a 36-month follow-up in group B stratified according to predicted peak oxygen consumption ( $pVO_2 \leq 40\%$ ).