

Supplementary figures

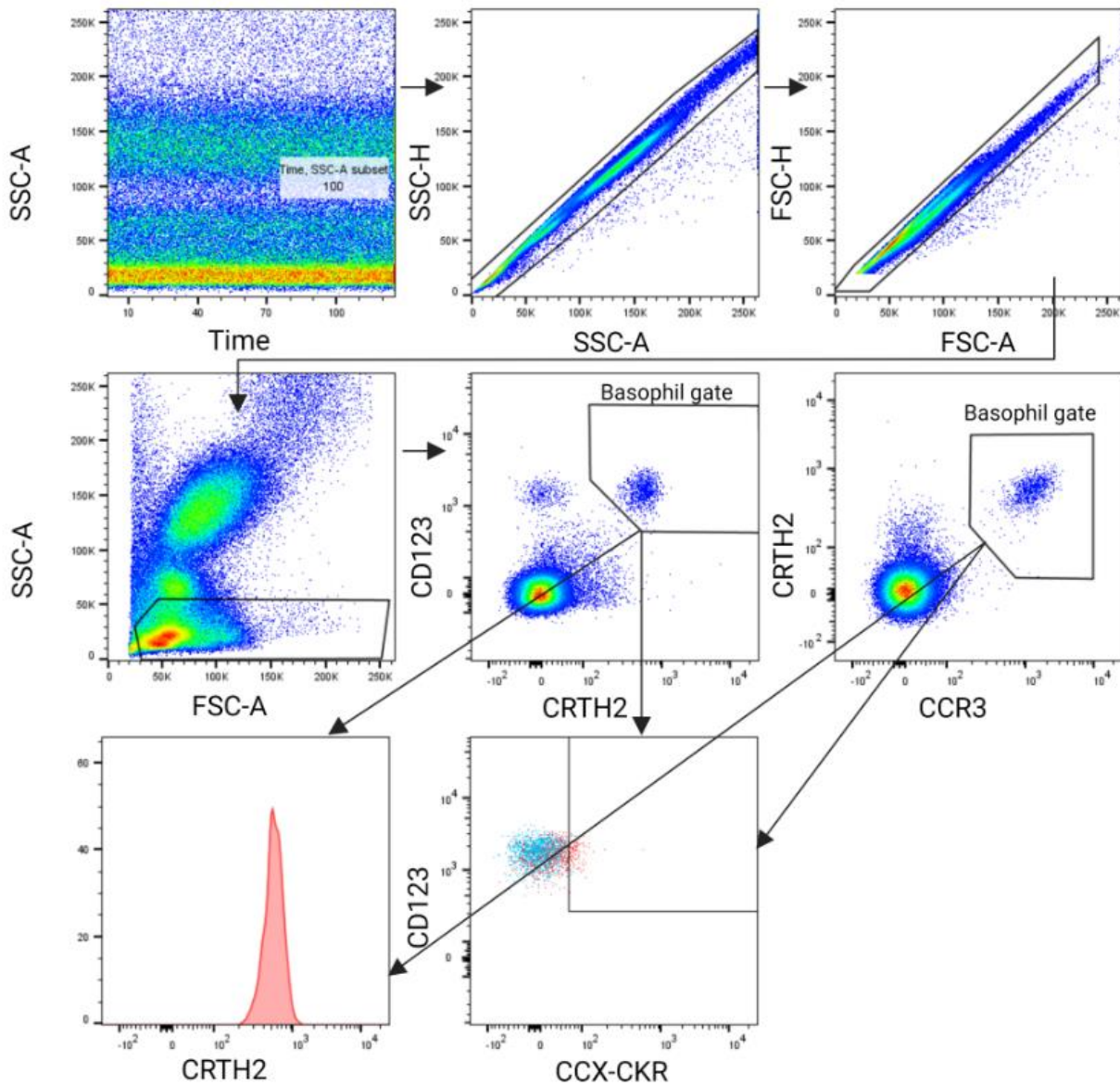


Figure S1 Gating strategy

The following gating approach was applied for the identification of basophils: SSC-A vs time, SSC-A vs SSC-H, FSC-A vs FSC-H, FSC-A vs SSC-A, and CRTH2 vs CD123/ CCR3 vs CRTH2 (basophil gate). Expression of receptors was investigated as GeoMean (histogram bottom panel, left column, e.g., CRTH2) or % of marker⁺ basophils (e.g., red dot plot, bottom panel, middle column). FMO controls were used for several receptors, e.g., CCX-CKR (blue dot plot, bottom panel, middle column).

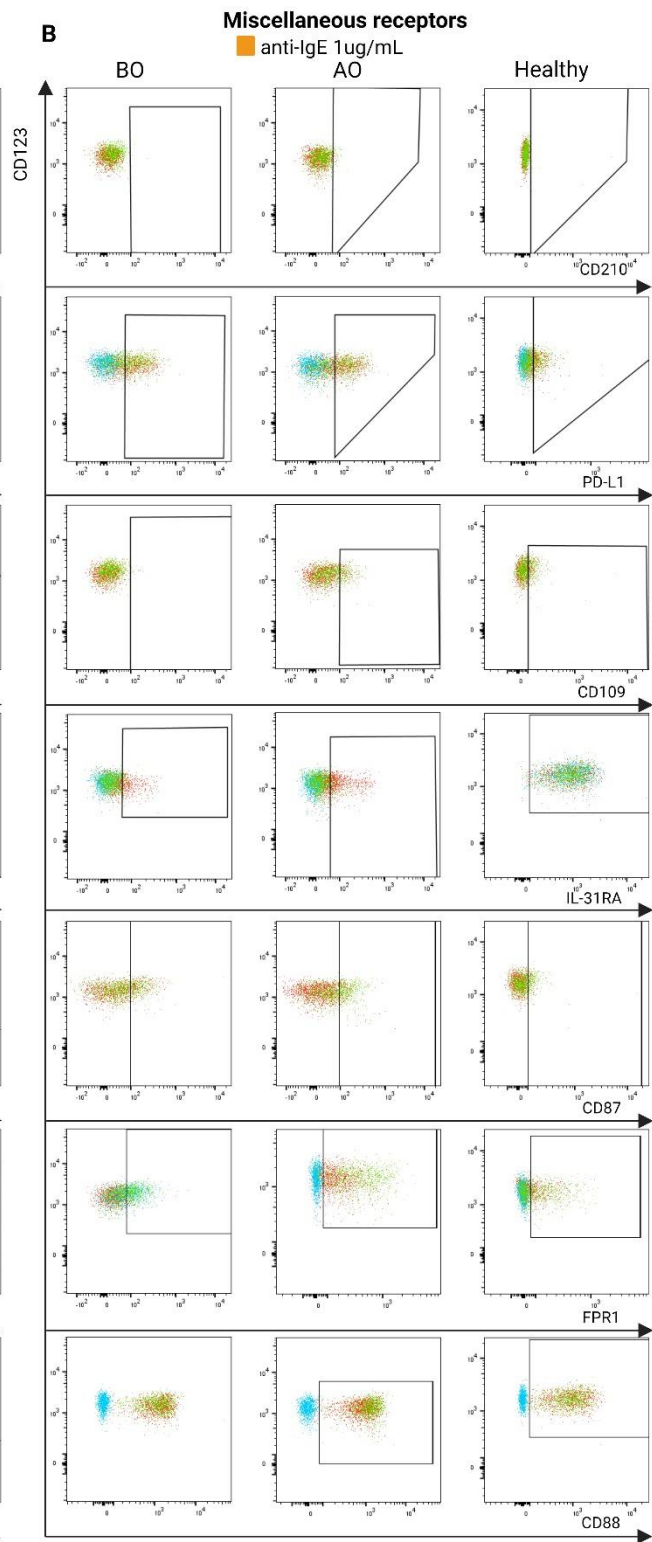
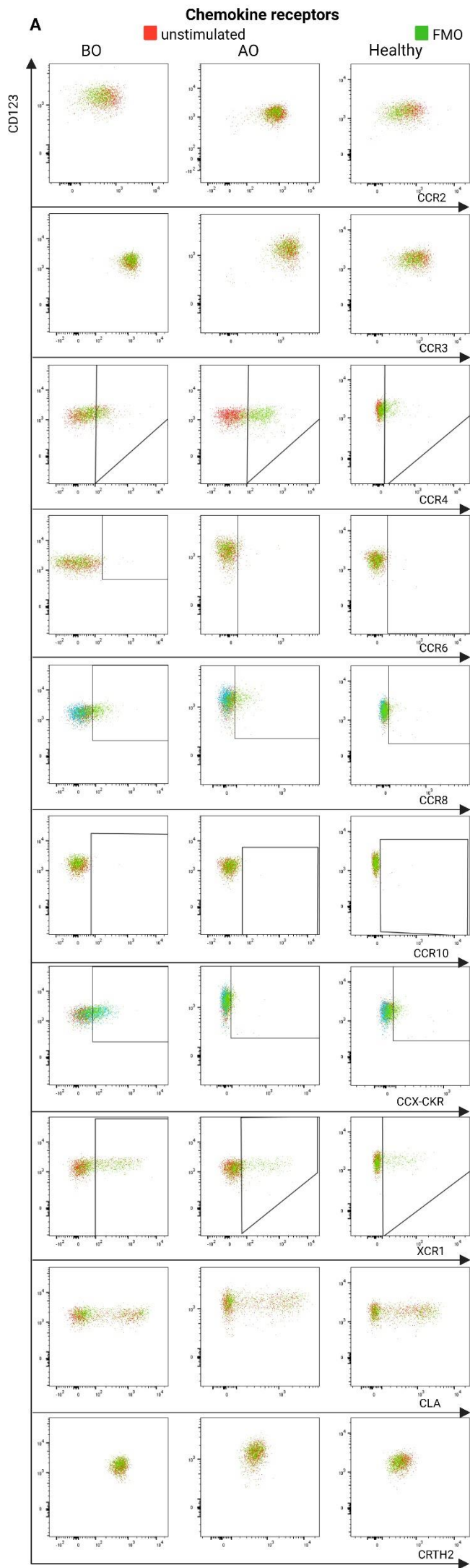


Figure S2 Expression of investigated receptors on basophils in CU and healthy subjects – representative dot plots

Dots plots show the expression of chemokine (A) and miscellaneous (B) receptors on basophils from CU patients before (BO) and after (AO) Omalizumab treatment and from healthy subjects. The overlaid dots plots depict the expression of receptors on unstimulated (red dots), FMO control (blue dots), and anti-IgE 1000 ng/mL stimulated (green dots) basophils. Gates consist of receptor-positive cells.

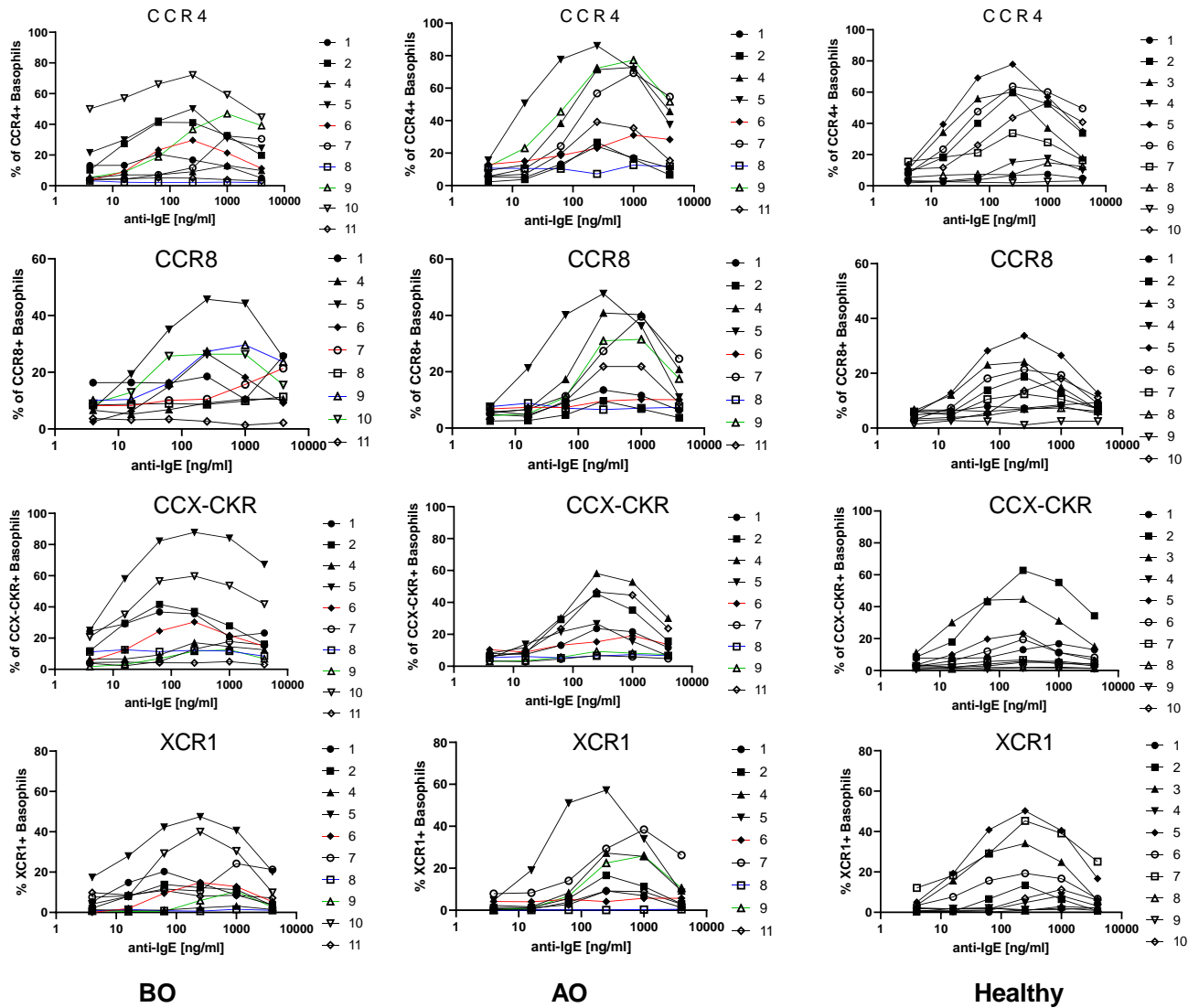
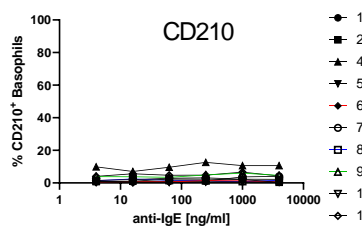
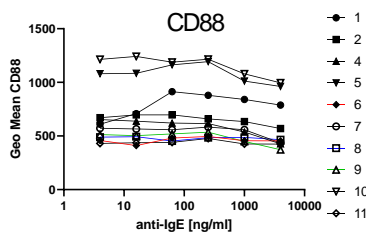
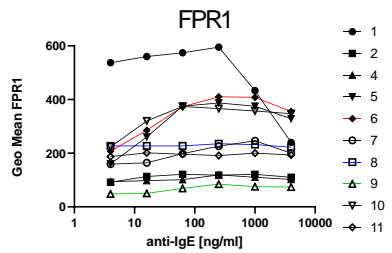
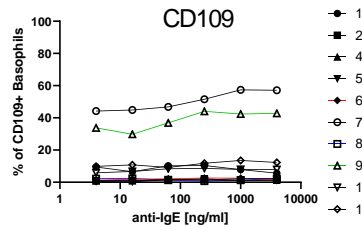
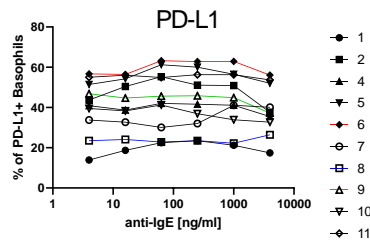
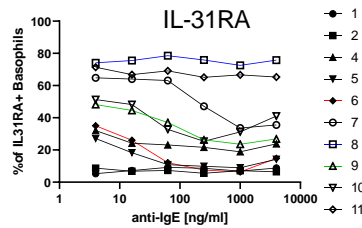
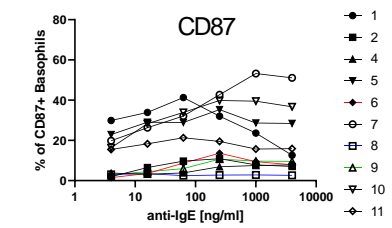


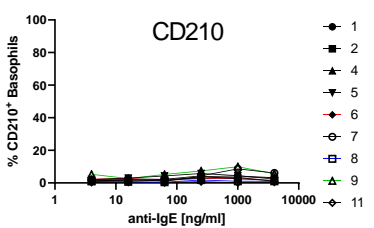
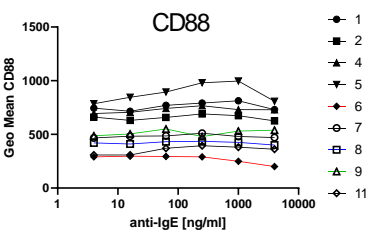
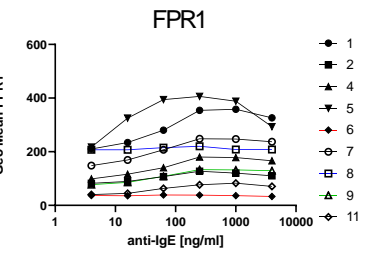
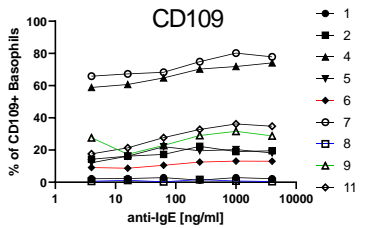
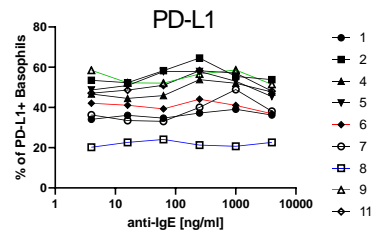
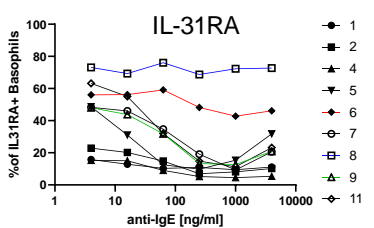
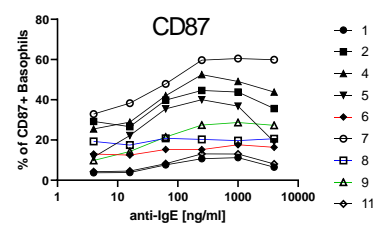
Figure S3, A IgE mediated dose-dependent increase in the expression of CCR4, CCR8, CCX-CKR, and XCR1

Whole blood basophils were stimulated with serial dilution of anti-IgE (4-4000 ng/mL) – X-axis. Change in the characterized receptors is presented on the Y-axis as % of receptor-positive basophils.

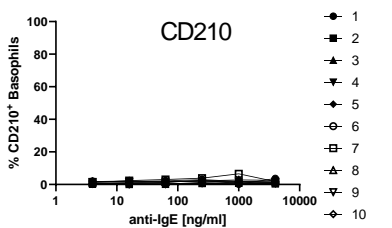
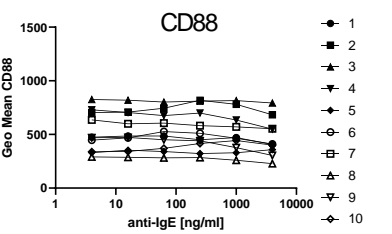
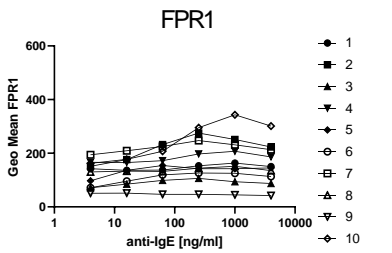
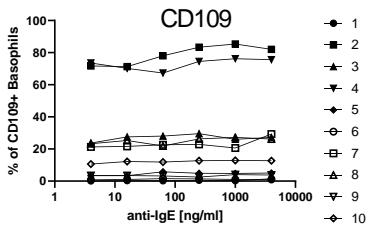
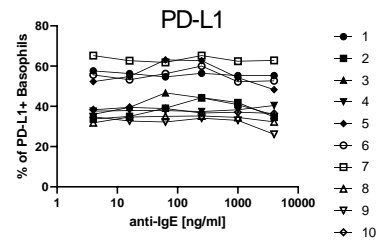
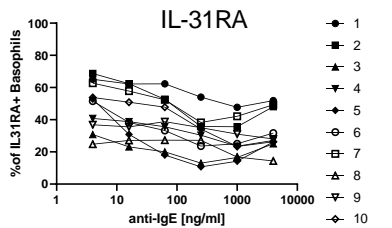
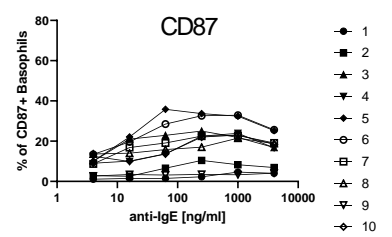
BO and AO refer to patients' groups before and after Omalizumab treatment, respectively; Left, middle, and right panels refer to BO (1-2, 4-11), AO (1-2, 4-9, 11), and healthy (1-10) groups, respectively; % of CCR8⁺ basophils in the BO group is presented for 9 subjects due to staining issues.



BO



AO



Healthy

Figure S4 IgE mediated stimulation – an expression of CD87, IL-31RA, PD-L1, CD109, FPR1, CD88 and CD210

Whole blood basophils were stimulated with serial dilution of anti-IgE (4-4000 ng/mL) – X-axis. Change in the characterized receptors is presented on the Y-axis as either % of receptor-positive basophils or GeoMean.

BO and AO refer to patients' groups before and after Omalizumab treatment, respectively; Left, middle, and right panels refer to BO (1-2, 4-11), AO (1-2, 4-9, 11), and healthy (1-10) groups, respectively

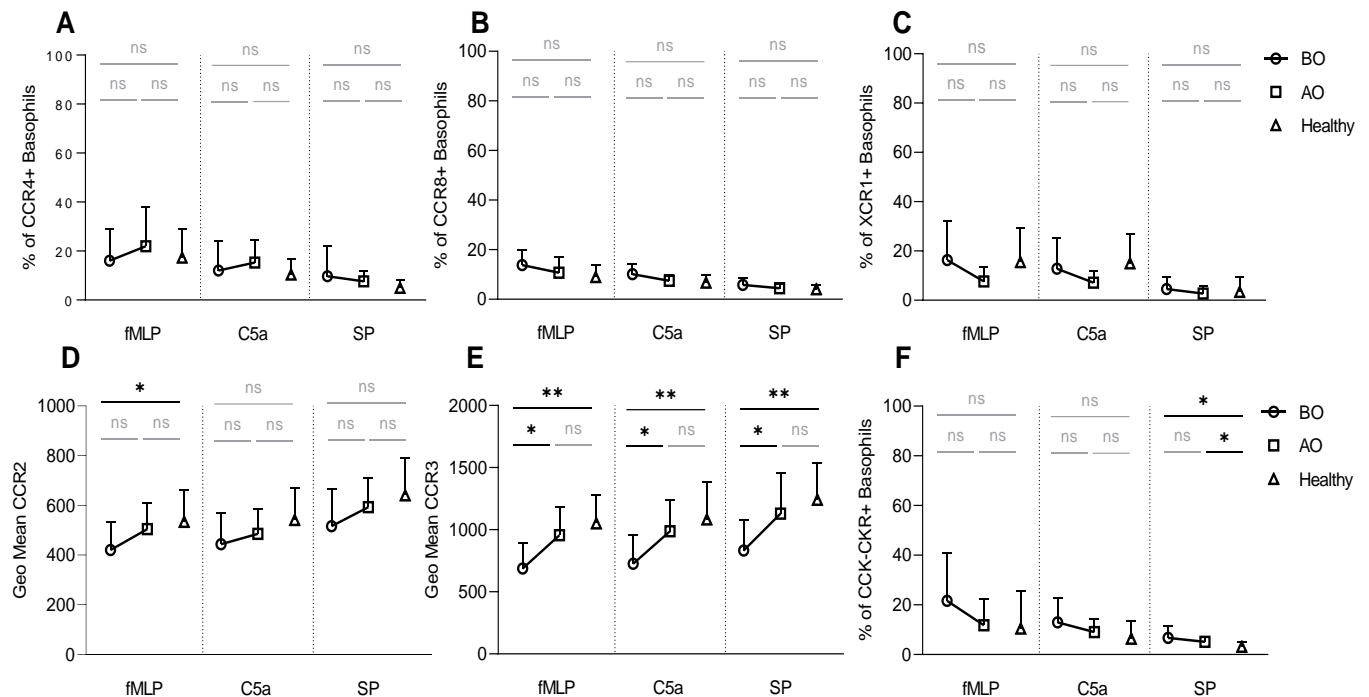


Figure S5 Non-IgE induced activation – the expression of chemokine receptors

Whole blood basophils were stimulated with either fMLP, C5a, or SP. Surface expression of chemokine receptors was depicted as % of receptor-positive basophils or GeoMean. **A–C.** % of CCR4⁺, CCR8⁺, XCR1⁺ basophils – BO vs. AO vs. healthy **D and E.** GeoMean of CCR2 and CCR3 – BO vs. AO vs. healthy **F.** % of CCR4⁺ basophils – BO vs. AO vs. Healthy

BO and AO refer to patients' groups before and after Omalizumab treatment, respectively; dots, squares, and triangles represent BO (1-2, 4-11), AO (1-2, 4-9, 11), and healthy (1-10) groups, respectively; % of CCR8⁺ basophils in BO group is presented for 9 subjects due to staining issues; applied statistics – unpaired t-test; ns – non-significant, $p > 0.05$, * - $p \leq 0.05$, ** - $p \leq 0.01$; Mean \pm SD; SD – standard deviation

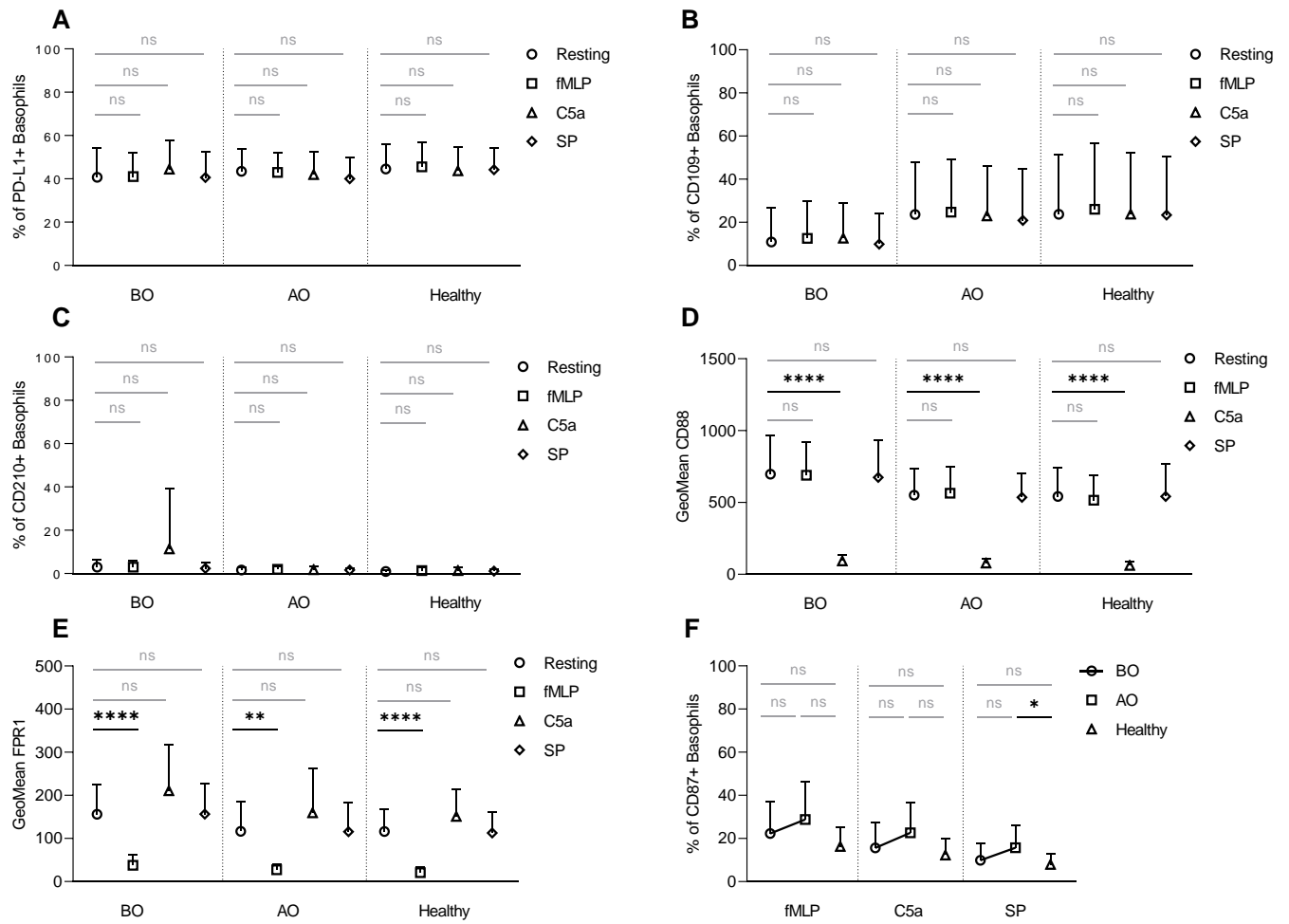


Figure S6 Non-IgE mediated activation of basophils - the expression of miscellaneous receptors

Whole blood basophils were stimulated with either fMLP, C5a, or SP. Surface expression of miscellaneous receptors was defined as % of receptor-positive basophils or GeoMean. **A-C.** % of PD-L1, CD109, and CD210⁺ basophils – resting vs. stimulated basophils **D and E.** GeoMean of CD88 and FPR1 - resting vs. stimulated basophils **F.** % of CD87⁺ basophils - BO vs. AO vs. Healthy

BO and AO refer to patients' groups before and after Omalizumab treatment, respectively; BO (1-2, 4-11), AO (1-2, 4-9, 11), and healthy (1-10) groups; applied statistics – unpaired t-test; ns – non-significant, $p > 0.05$, * - $p \leq 0.05$, ** - $p \leq 0.01$, **** - $p \leq 0.0001$; Mean \pm SD; SD – standard deviation

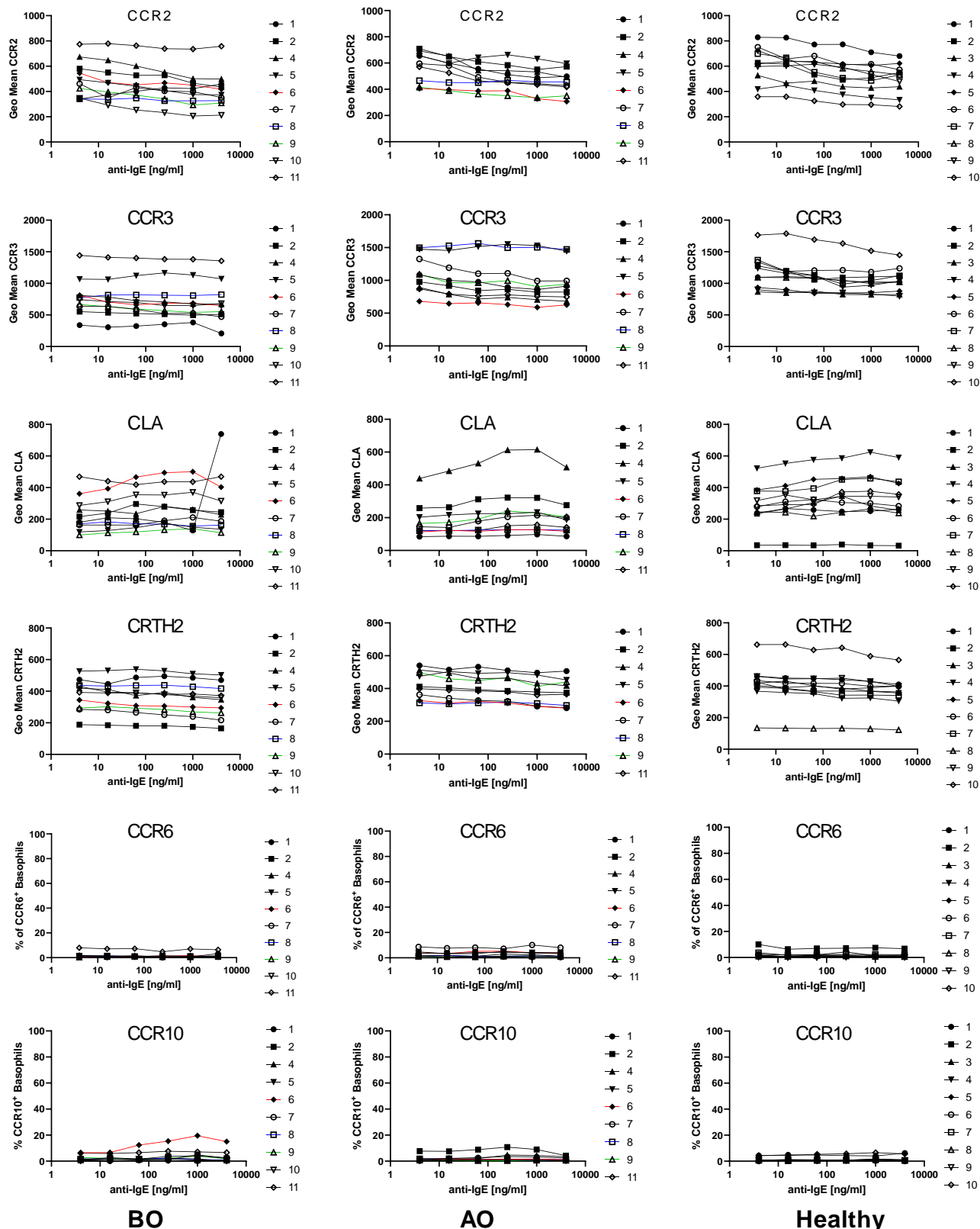


Figure S7, B IgE-mediated stimulation – an expression of CCR2, CCR3, CLA, CRTH2, CCR6, and CCR10

Whole blood basophils were stimulated with serial dilution of anti-IgE (4-4000 ng/mL) – X-axis. Change in the characterized receptors is presented on the Y-axis as GeoMean or % of receptor-positive basophils.

BO and AO refer to patients' groups before and after Omalizumab treatment, respectively; Left, middle, and right panels refer to BO (1-2, 4-11), AO (1-2, 4-9, 11), and healthy (1-10) groups, respectively.

	<i>Resting</i>			<i>anti-IgE</i>		
	<i>Healthy</i>	<i>BO</i>	<i>AO</i>	<i>Healthy</i>	<i>BO</i>	<i>AO</i>
CCR2	✓	↓	↓	xx	xx	xx
CCR3	✓	↓	↓	xx	xx	xx
CLA	✓	✓	✓	xx	xx	xx
CRTH2	✓	✓	✓	xx	xx	xx
CCR4	✓	✓	✓	↑x	↑x	↑x
CCR6	-	-	-	xx	xx	xx
CCR8	✓	↑	✓	↑↑	↑x	↑x
CCR10	-	-	-	xx	xx	xx
CCX-CKR	✓	↑	✓	↑↑	↑x	↑x
XCR1	-	-	-	↑x	↑x	↑x
CD88	✓	✓	✓	xx	xx	xx
FPR1	✓	✓	✓	xx	↑x	xx
CD109	✓	✓	✓	xx	↓x	xx
IL-31RA	✓	✓	✓	↓x	↓x	↓x
PD-L1	✓	✓	✓	xx	xx	xx
CD87	✓	✓	↑	↑x	↑x	↑x
CD210	-	-	-	xx	xx	xx

	<i>fMLP</i>			<i>C5a</i>		
	<i>Healthy</i>	<i>BO</i>	<i>AO</i>	<i>Healthy</i>	<i>BO</i>	<i>AO</i>
CCR2	↓x	xx	xx	xx	xx	↓x
CCR3	xx	xx	xx	xx	xx	xx
CLA	xx	xx	xx	xx	xx	xx
CRTH2	xx	xx	xx	xx	xx	xx
CCR4	↑x	xx	↑x	↑x	xx	↑x
CCR6	xx	xx	xx	xx	xx	xx
CCR8	↑x	↑x	↑x	↑x	xx	↑x
CCR10	xx	xx	xx	xx	xx	xx
CCX-CKR	xx	↑x	xx	xx	xx	xx
XCR1	↑x	↑x	↑x	↑x	↑x	↑x
CD88	xx	xx	xx	xx	xx	xx
FPR1	xx	xx	xx	xx	xx	xx
CD109	xx	xx	xx	xx	xx	xx
IL-31RA	↓	↓↓	xx	xx	xx	xx
PD-L1	xx	xx	xx	xx	xx	xx
CD87	↑x	↑x	xx	xx	xx	xx
CD210	xx	xx	xx	xx	xx	xx

Table S1 Overview of receptor expression on basophils from chronic urticaria patients and healthy subjects.

Expression of investigated receptors on resting and activated basophils from chronic urticaria patients and healthy individuals.

Resting column – “checkmark” - an expression of a receptor on basophils, “-” – no expression of a receptor on basophils, red/green arrow – reduced/increased expression of a receptor on basophils in chronic urticaria compared to healthy, exception CD87 AO vs. healthy;

Anti-IgE/fMLP/C5a/SP columns – 1st sign refers to the difference between resting vs. stimulated, 2nd sign refers to the difference between BO and healthy, “x” – no change; red/orange/green arrow – reduced/tendency of reduced or increased/tendency of increased expression of a receptor

BO and AO refer to patients' groups before and after Omalizumab treatment