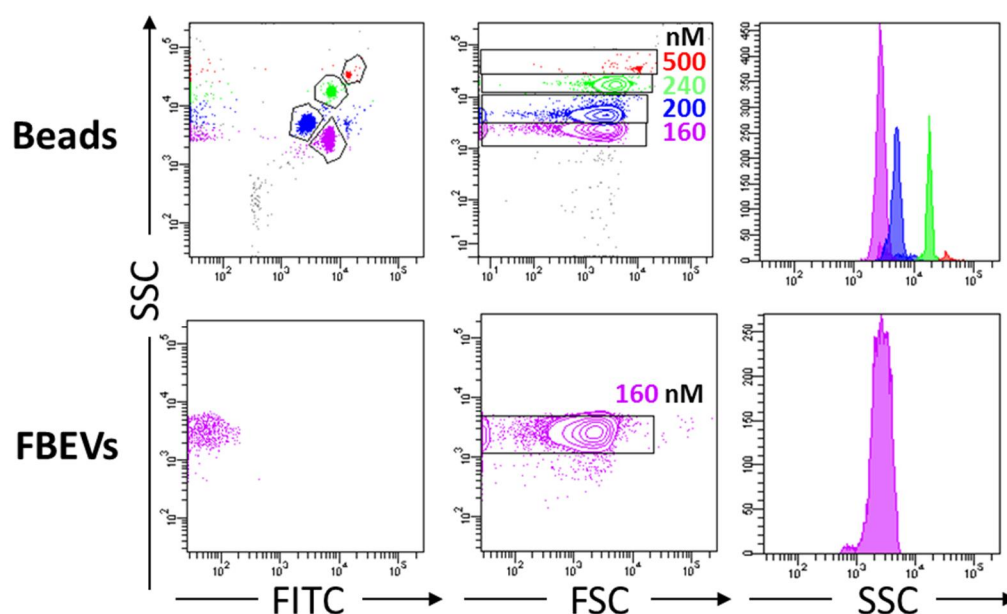
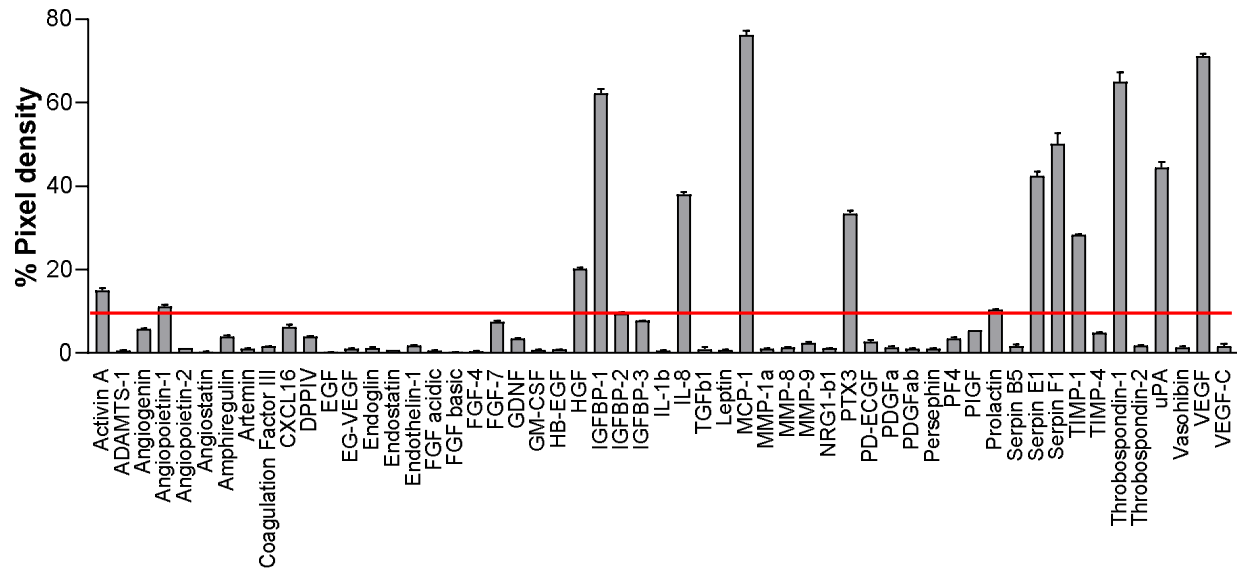


## Supplementary Figures



**Supplementary Figure S1. FBEVs characterization by flow cytometry.** Comparison of flow cytometry analysis of FBEVs *versus* FITC-labelled beads to assess size of EVs based on forward scatter count (FSC) and side scatter count (SSC) distribution. Note that distribution of FBEVs falls in the 160 nm region. A representative dot plot analysis is shown.



**Supplementary Figure S2. FBEVs contain a pro-angiogenic cargo.** FBEVs were lysed and analyzed for cytokine cargo by an angiogenic array. Data have been normalized to reference spots and expressed as mean Pixel Density  $\pm$  S.D. The red line marks the 10% pixel density cutoff and was used to facilitate data visualization.