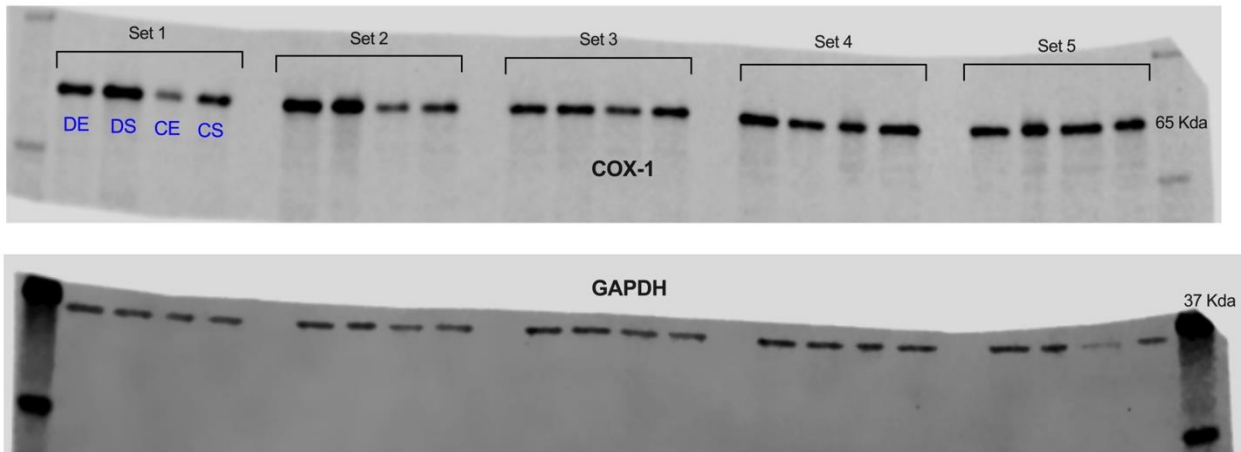
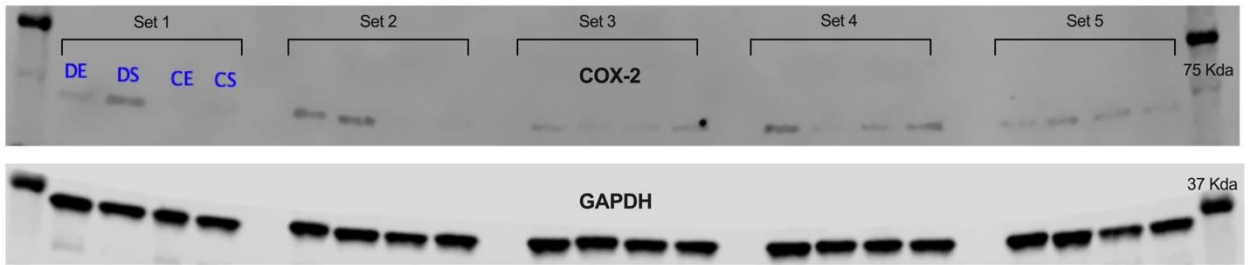


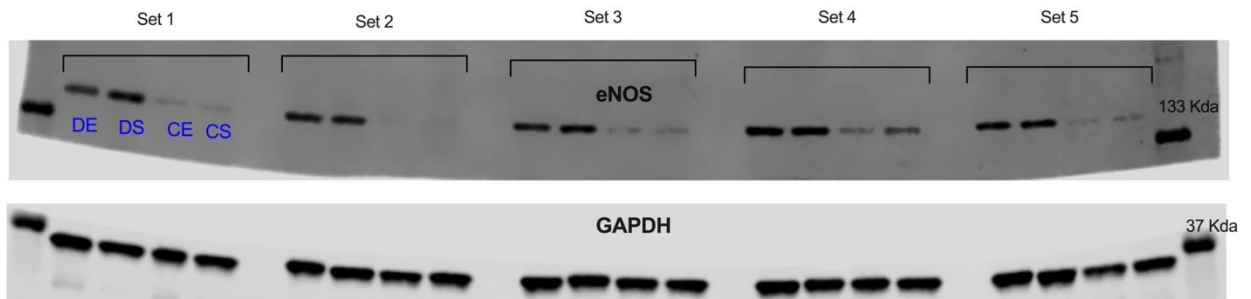
A.



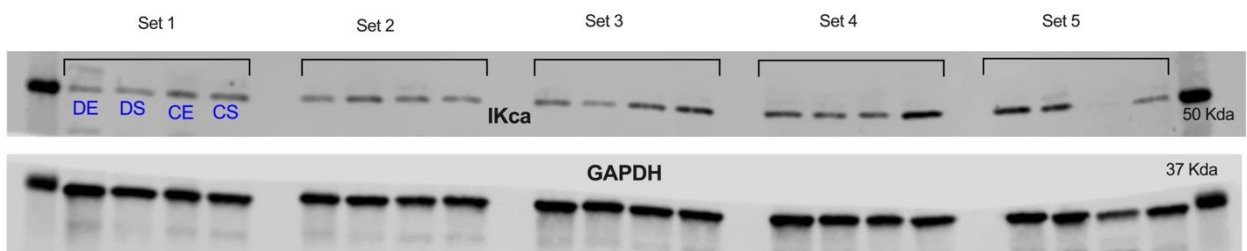
B.



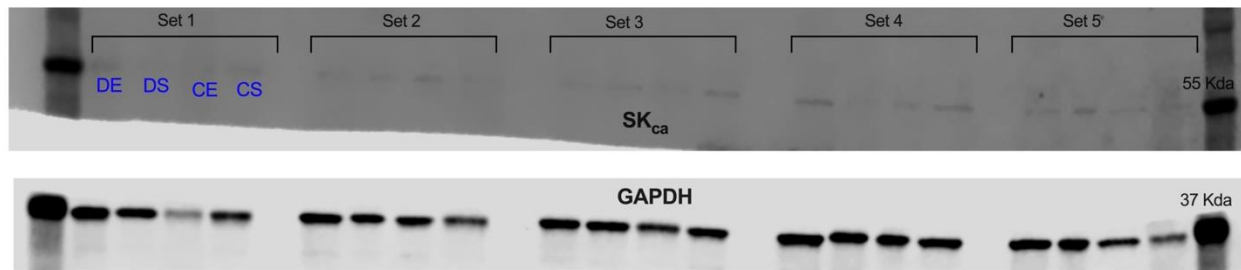
C.



D.



E.



Supplementary Figure S2: Western blot analysis of (A) COX-1; (B) COX-2; (C) eNOS; (D) IK_{Ca} and (E) SK_{Ca} expressions in mesenteric arteries of sedentary and exercise-trained control (CS and CE) and diabetic (DS and DE) rats. Protein levels were quantified by densitometry and normalized to corresponding GAPDH (Please see **Figure 4A, 4B, 5, 6A and 6B** in Manuscript). n=3-5 animals per group. COX-1, cyclooxygenase-1; COX-2, cyclooxygenase-2; eNOS, endothelial nitric oxide synthase; IK_{Ca}, intermediate conductance calcium activated potassium channel; SK_{Ca}, small conductance calcium activated potassium channel. Figure B and C are from the same membrane. Thus, loading control (GAPDH) is the same and GAPDH image was reused in Figure B and C. Parts of these images were used in **Figure 4A, 4B, 5, 6A and 6B**.