

Figure S1: Genes of the estrogen pathway associated with DSCAM-AS1 expression in EC.

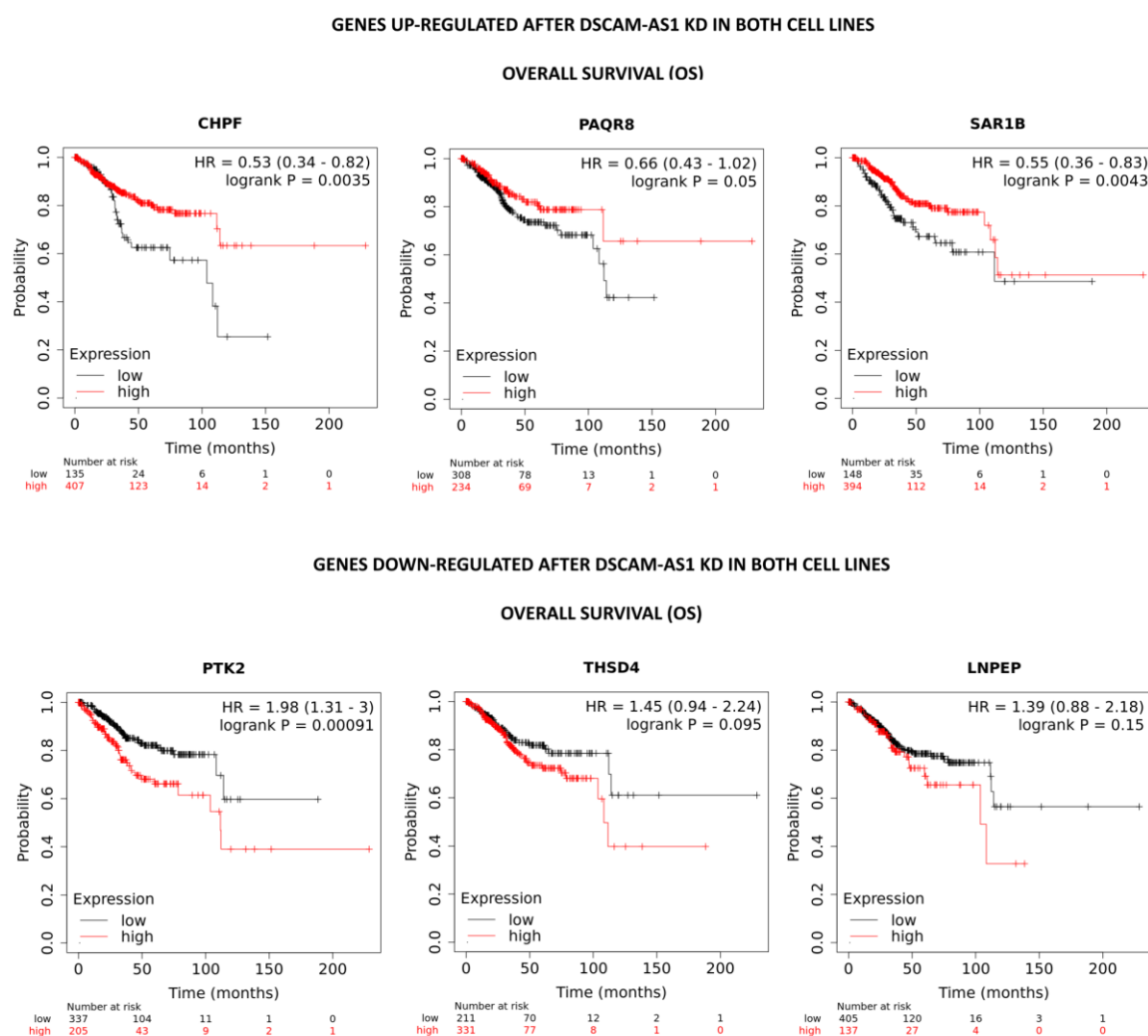


Figure S2: Genes with equidirectional regulation after DSCAM knockdown in HEC-1B and RL95-2 cells, indicated is their association with OS.

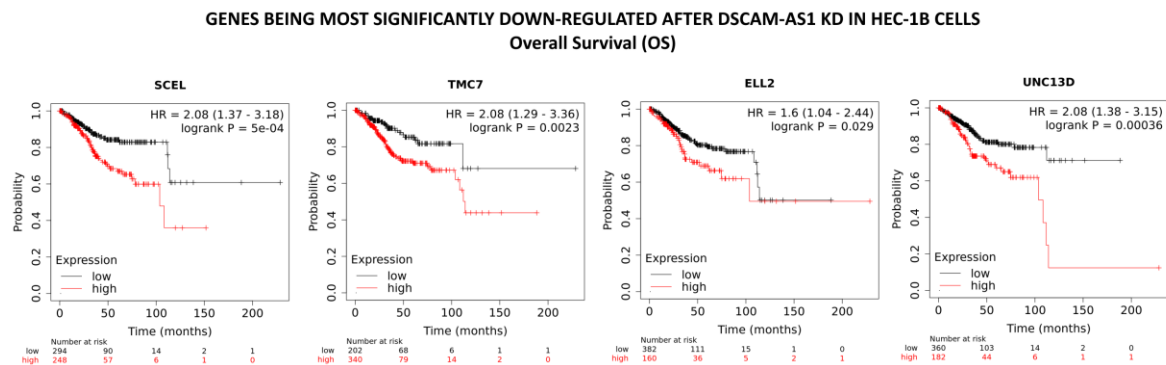


Figure S3: Genes being most significantly downregulated after DSCAM-AS1 knockdown in HEC-1B cells, shown is their association with OS.

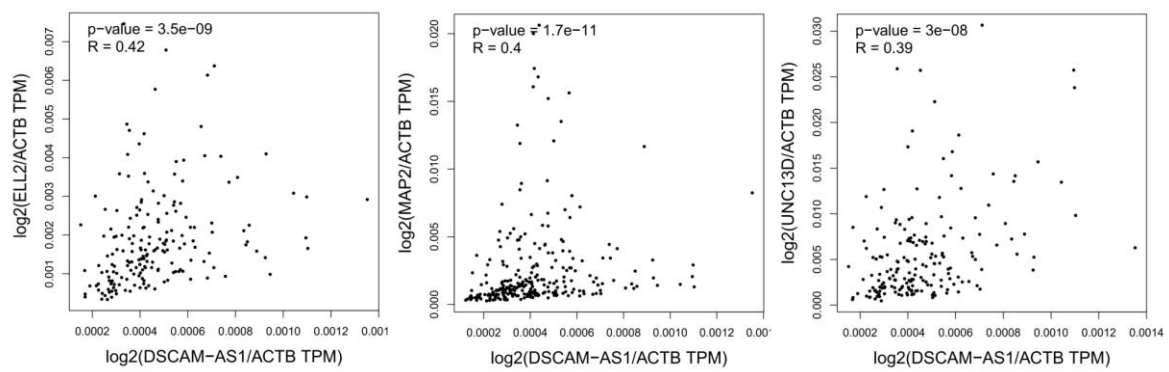


Figure S4: Genes being strongly downregulated after DSCAM-AS1 knockdown in EC cells, shown is their correlation with DSCAM-AS1 in endometrial adenocarcinoma tissues.