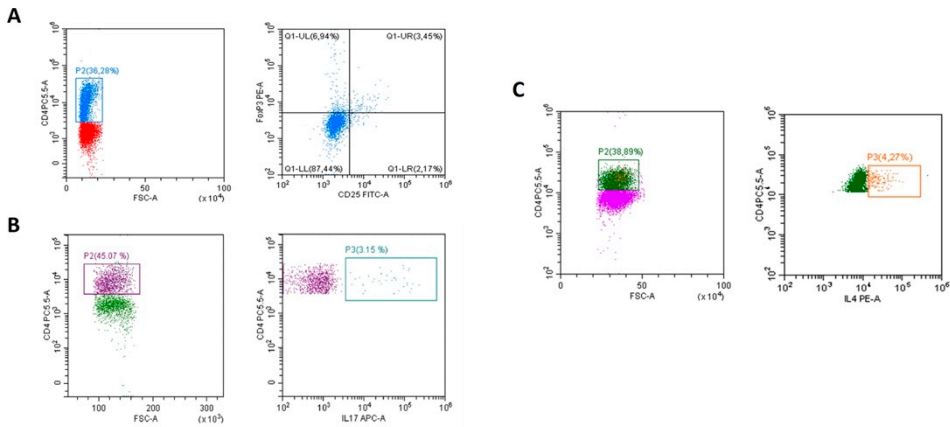


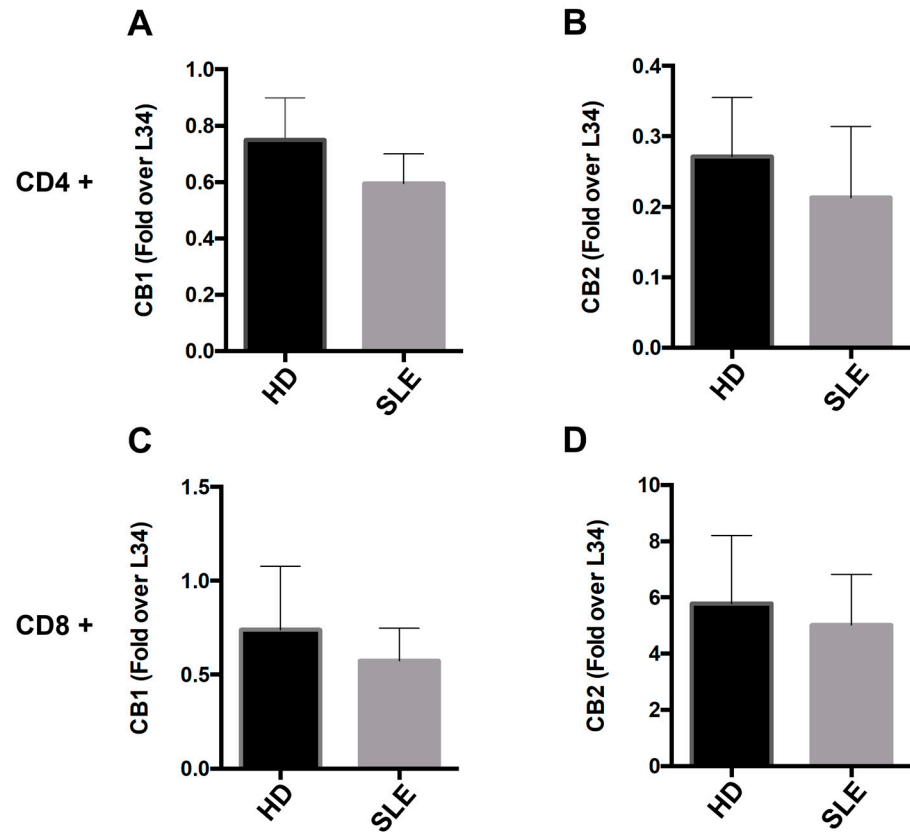
Supplementary Materials

Supplementary Table S1. antibodies used for flow cytometry analysis. IL: interleukin; IFN: interferon.

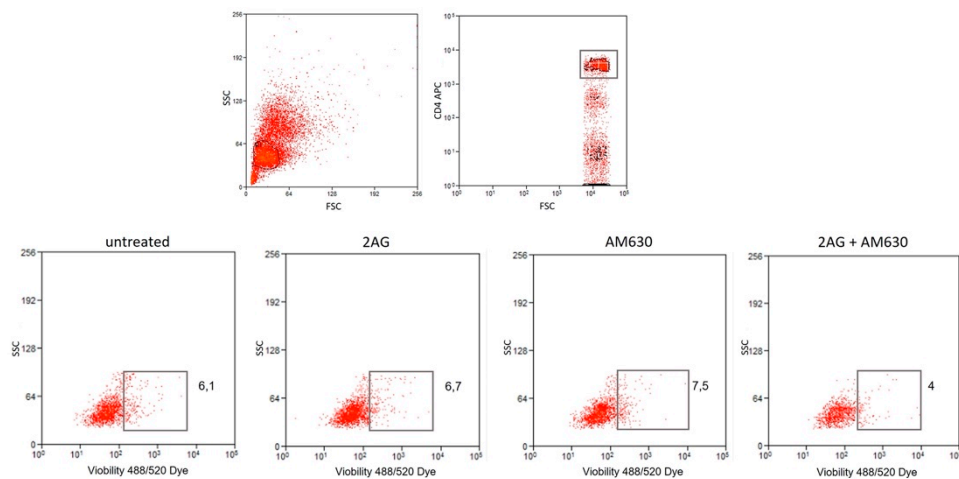
Antibody	Dilution
CD4 PercP Vio 700	1:100
CD8 APC Vio 770	1:100
CD3 PE Vio 770	1:100
IL-4 PE	1:50
IFN- γ FITC	1:50
FoxP3 PE	1:50
IL-17A APC	1:50
CD4 APC	1:100



Supplementary Figure S1. Representative dot plots of peripheral blood lymphocytes from one SLE patient showing the gating strategy to identify Treg cells (A), Th17 cells (B) and CD4+ T lymphocytes expressing IL-4 (C), all within the P2 population.



Supplementary Figure S2. Gene expression of CB₁ and CB₂ in CD4⁺ (A,B) and CD8⁺ (C,D) cells of SLE patients compared to healthy donors. Values are reported as fold change in gene expression over ribosomal protein L34. Data are shown as means \pm SEM, n = 5 samples per group. No significant difference using the Mann-Whitney test.



Supplementary Figure S3. Effect of 2-AG and CB₂ inhibitor AM630 on cell vitality. Representative flow cytometry dot plots showing the percentage of dead CD4⁺ T lymphocytes from SLE patients (n = 5) after treatment with 2-AG alone and in combination with AM630.