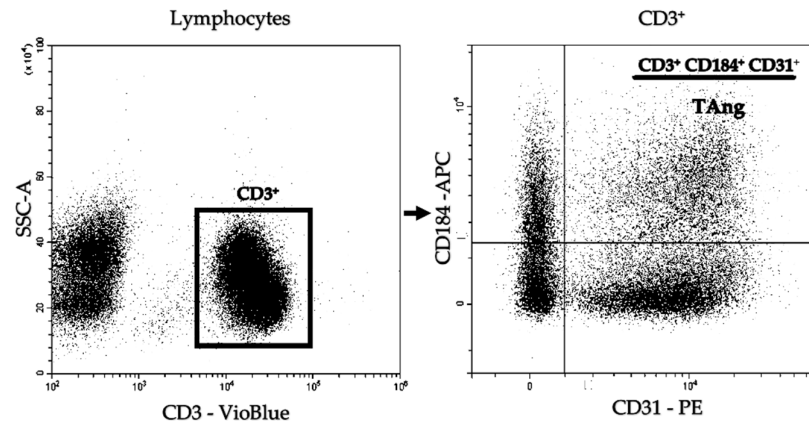




Angiogenic T cells: potential biomarkers for the early diagnosis of interstitial lung disease in autoimmune diseases?

Verónica Pulito-Cueto^{1*}, Sara Remuzgo-Martínez^{1*}, Fernanda Genre^{1*}, Belén Atienza-Mateo^{1,2}, Víctor M. Mora-Cuesta^{1,3}, David Iturbe-Fernández^{1,3}, Leticia Lera-Gómez¹, Javier Rodríguez-Carrio⁴, Diana Prieto-Peña^{1,2}, Virginia Portilla^{1,2}, Ricardo Blanco^{1,2}, Alfonso Corrales^{1,2}, Oreste Gualillo⁵, José M. Cifrián^{1,3,6}, Raquel López-Mejías^{1**} and Miguel A. González-Gay^{7,8**}



Supplementary Figure S1. Representative dot-blots of the strategy used to quantify of TAng by flow cytometry. CD3⁺ were gated and then assayed for expression of CD184 and CD31 in the lymphocyte gate. TAng were considered as CD3⁺/CD184⁺/CD31⁺ cells in the lymphocyte gate. Images obtained from Cytexpert 2.3 analyzer.



Supplementary Table S1. Clinical manifestations of patients with SSc-ILD⁺ and SSc-ILD⁻.

	SSc-ILD ⁺ patients <i>n</i> = 21	SSc-ILD ⁻ patients <i>n</i> = 20
Pulmonary hypertension, <i>n</i> (%)	3 (15.8)	0 (0.0)
Renal impairment, <i>n</i> (%)	1 (4.8)	1 (5.0)
Cardiac involvement, <i>n</i> (%)	6 (28.6)	1 (5.0)
Raynaud's phenomenon, <i>n</i> (%)	21 (100.0)	20 (100.0)
Esophageal dysfunction, <i>n</i> (%)	12 (57.1)	5 (25.0)
Calcinosis, <i>n</i> (%)	0 (0.0)	6 (30.0)
Synovitis, <i>n</i> (%)	6 (28.6)	6 (30.0)

SSc: systemic sclerosis; ILD: interstitial lung disease.

Supplementary Table S2. Frequency of TAng (%) in all the individuals included in the study.

		<i>Mean ± SD</i>
Study Objective Groups	AD-ILD ⁺	11.560 ± 5.242
	RA-ILD ⁺	11.950 ± 5.234
	SSc-ILD ⁺	12.570 ± 5.052
	Other AD-ILD ⁺	10.560 ± 6.684
Comparative Groups	AD-ILD ⁻	15.920 ± 4.612
	RA-ILD ⁻	16.400 ± 4.926
	SSc-ILD ⁻	16.070 ± 5.420
	IPF	11.340 ± 3.732
	HC	16.500 ± 4.830

TAng: angiogenic T cells; SD: standard deviation; AD: autoimmune disease; ILD: interstitial lung disease; RA: rheumatoid arthritis; SSc: systemic sclerosis; IPF: idiopathic pulmonary fibrosis; HC: healthy controls.



Supplementary Table S3. Detailed information of cellular and molecular endothelial dysfunction-related biomarkers in the whole cohort of patients with AD-ILD*.

EPC Frequency (%) (<i>Mean ± SD</i>)	0.037 ± 0.017
EC Frequency (%) (<i>Mean ± SD</i>)	0.017 ± 0.019
VEGF mRNA expression (<i>Mean ± SD</i>)	0.040 ± 0.069
VEGF serum levels (pg/mL) (<i>Mean ± SD</i>)	89.620 ± 63.840

AD: autoimmune disease; ILD: interstitial lung disease; EPC: endothelial progenitor cells; SD: standard deviation; EC: endothelial cells; VEGF: vascular endothelial growth factor.