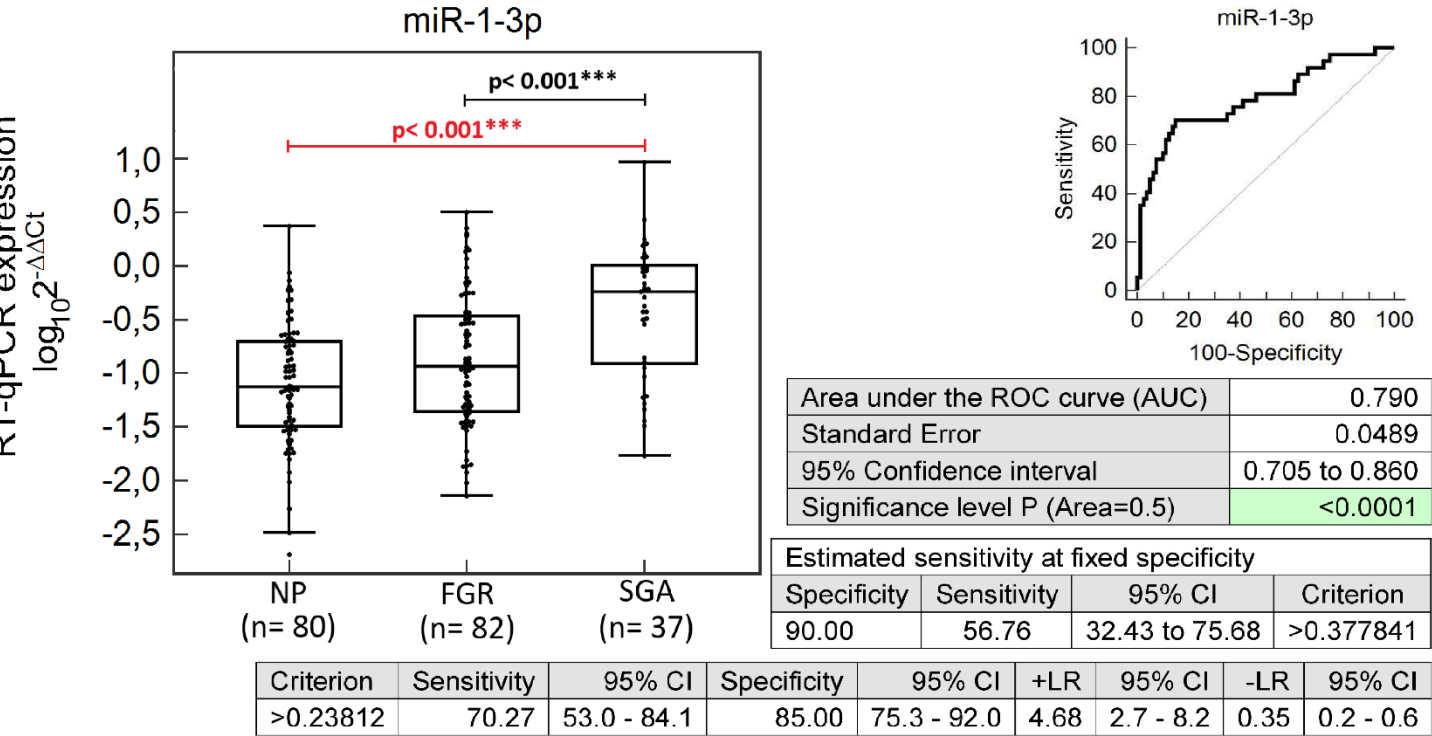
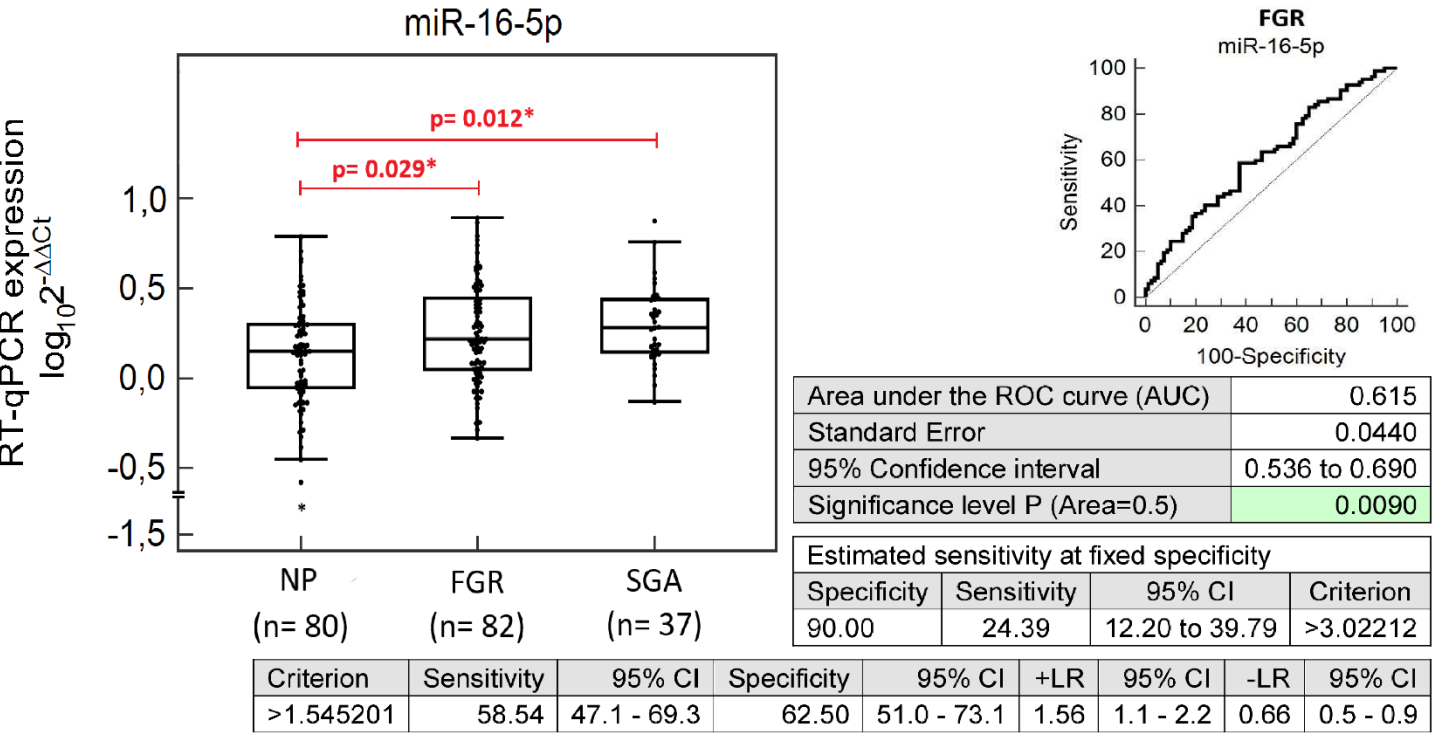


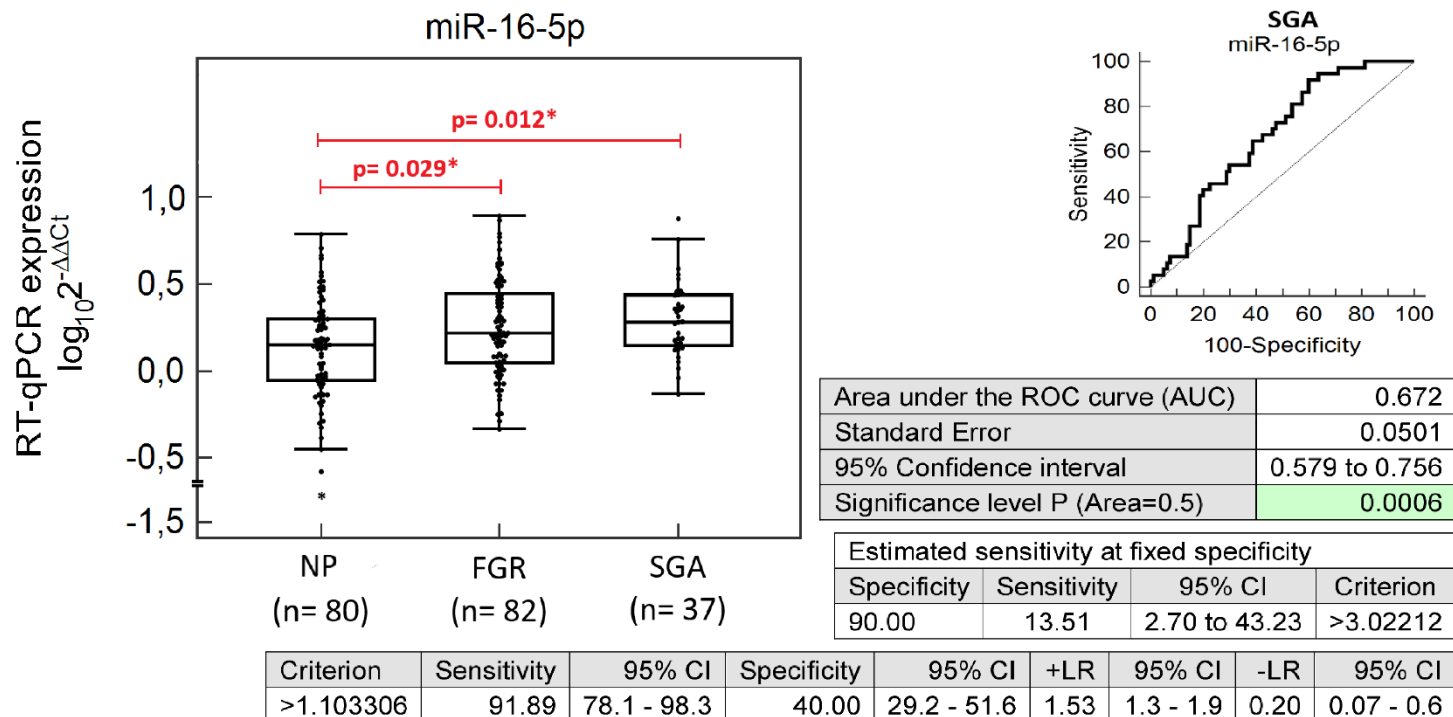
A



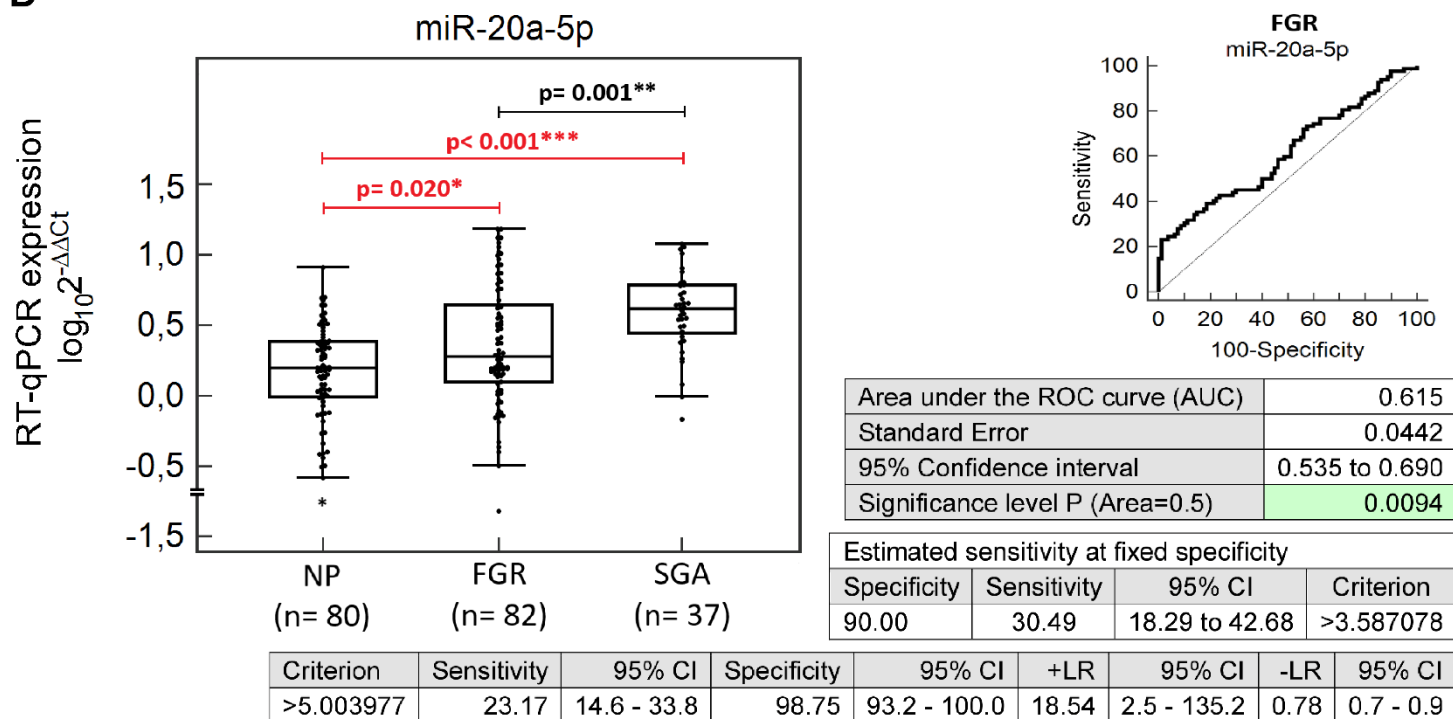
B



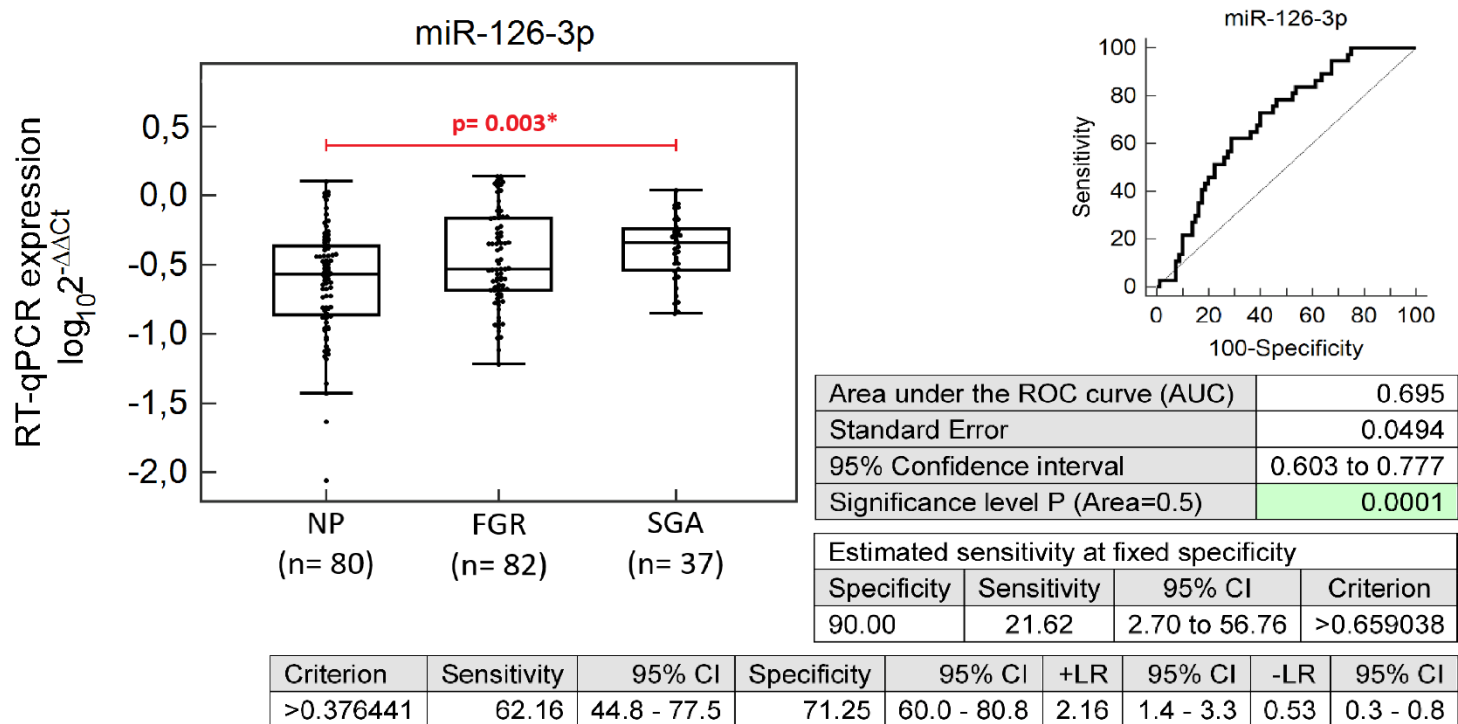
C



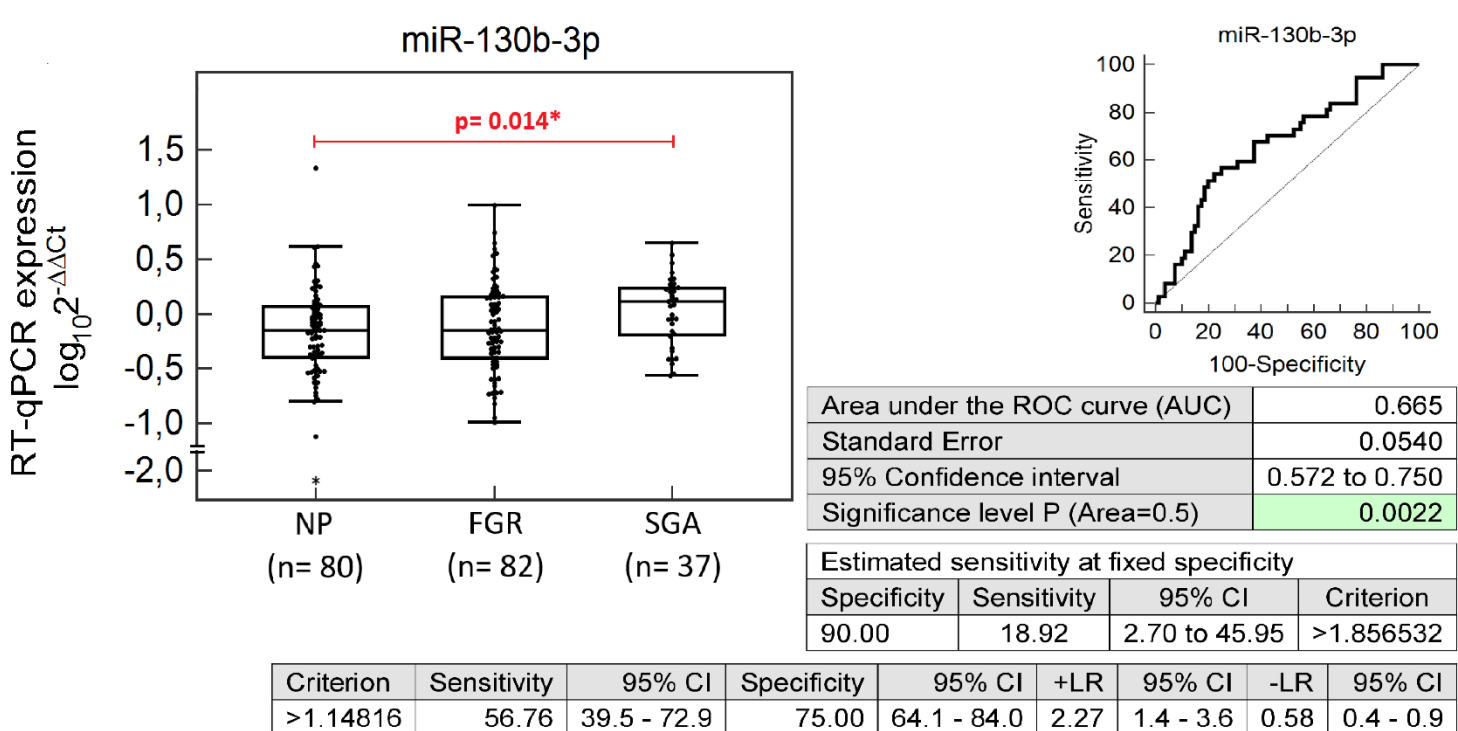
D



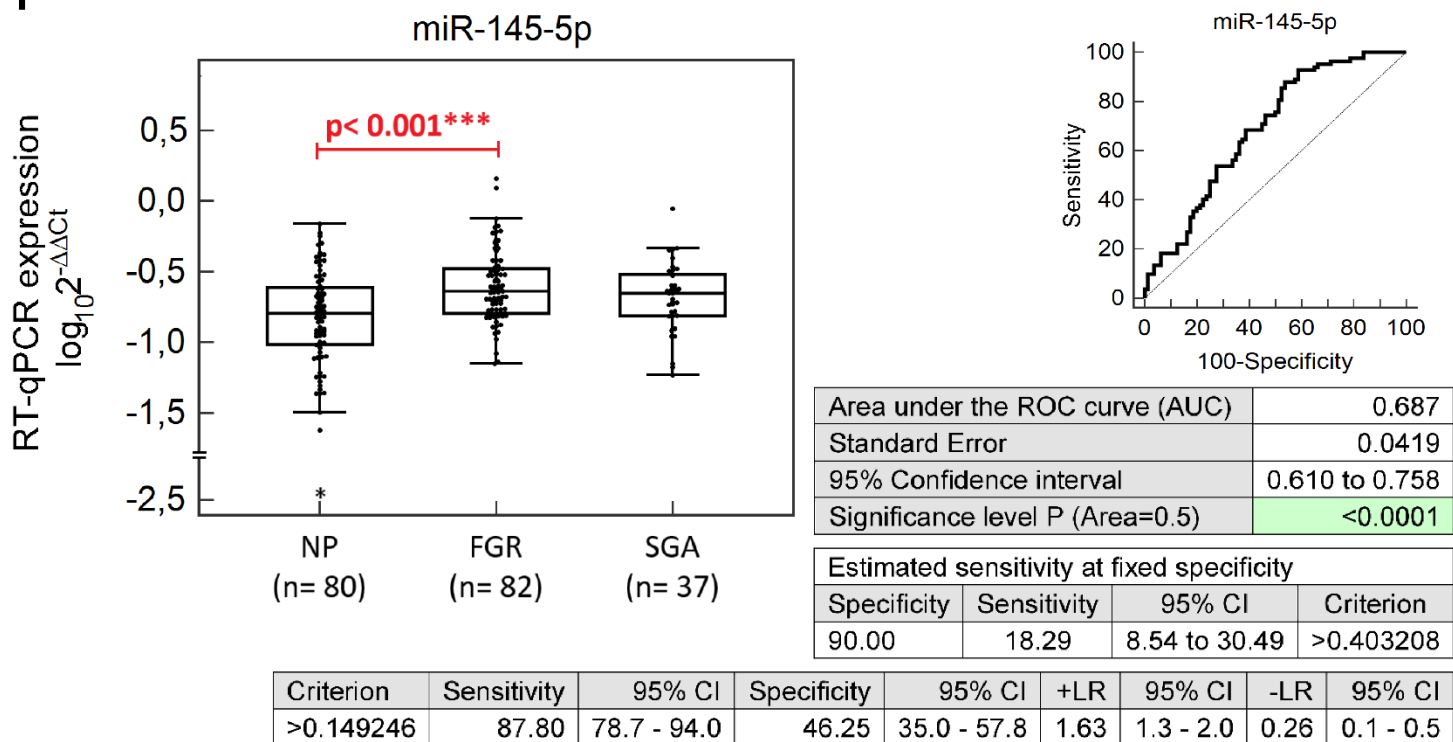
G



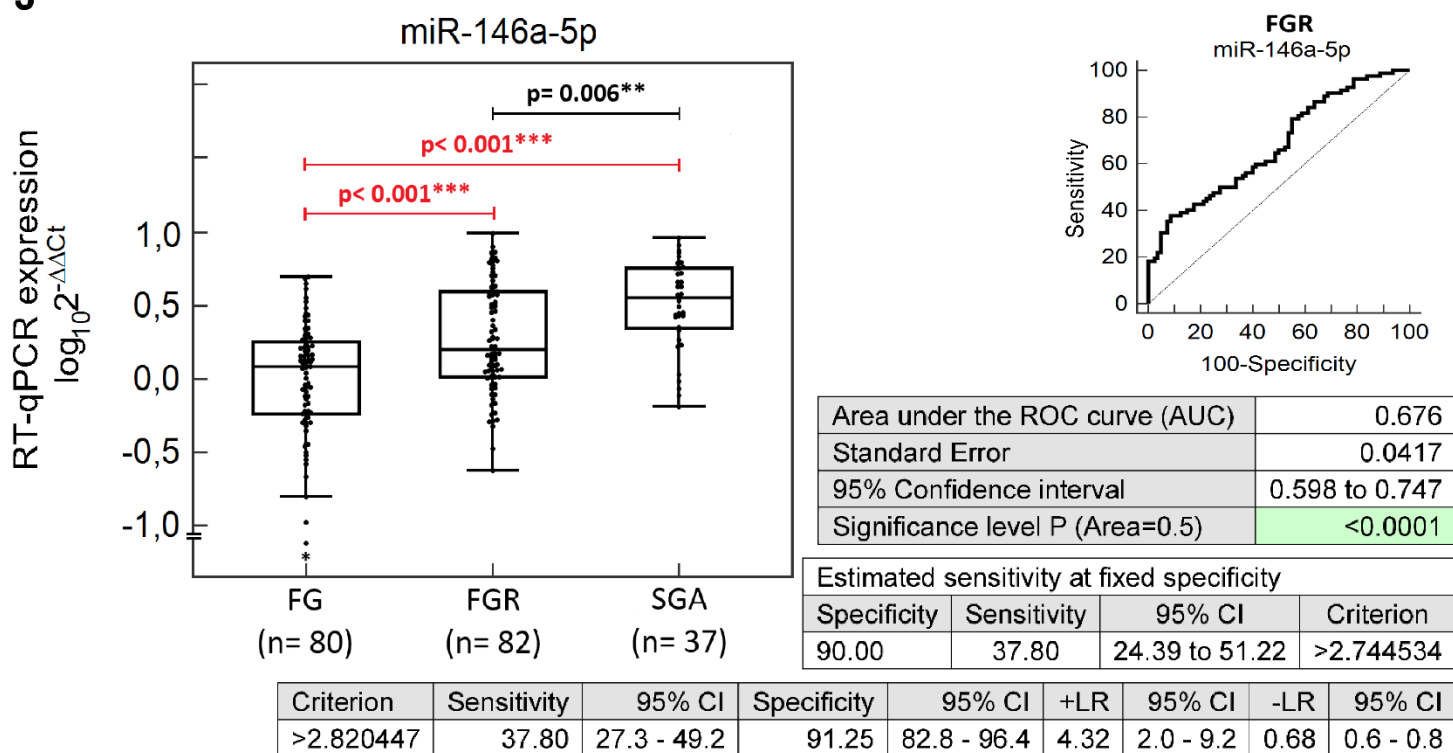
H



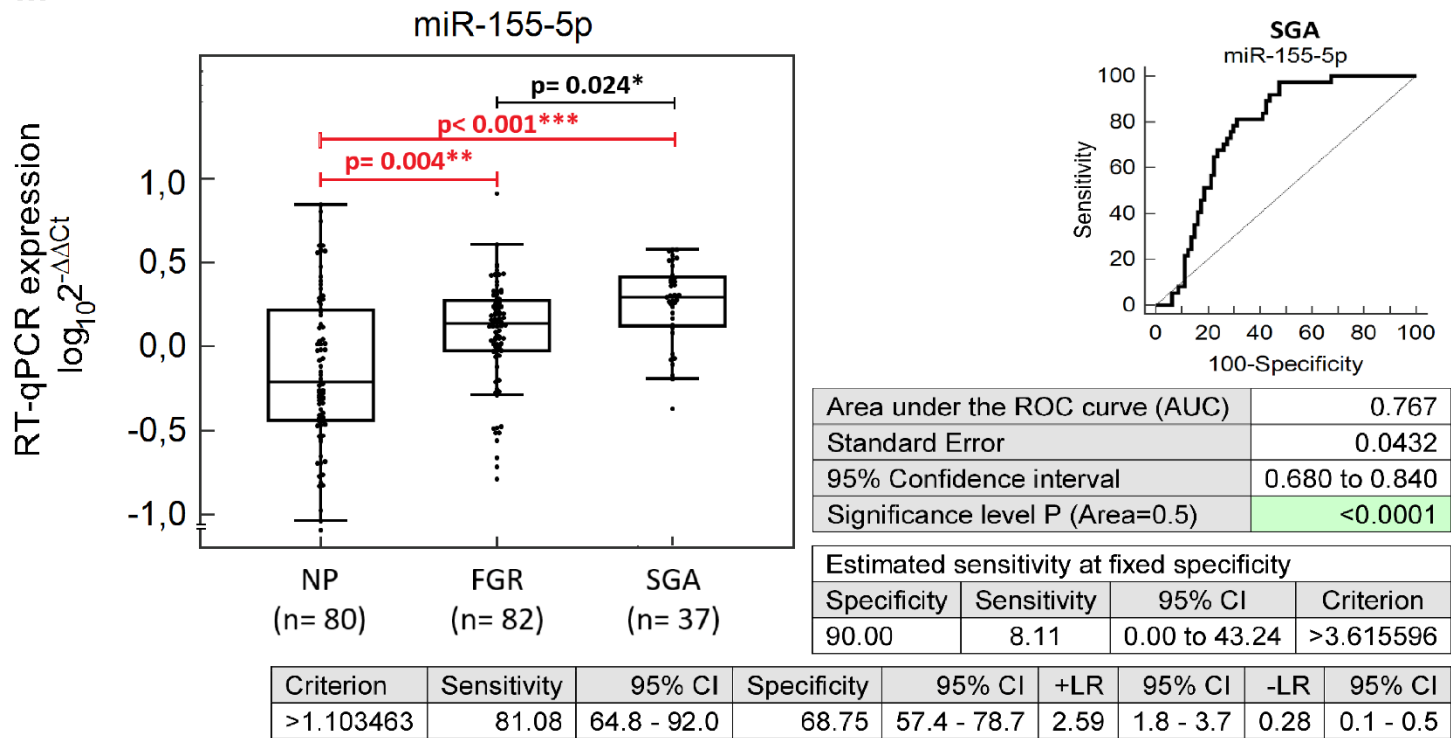
I



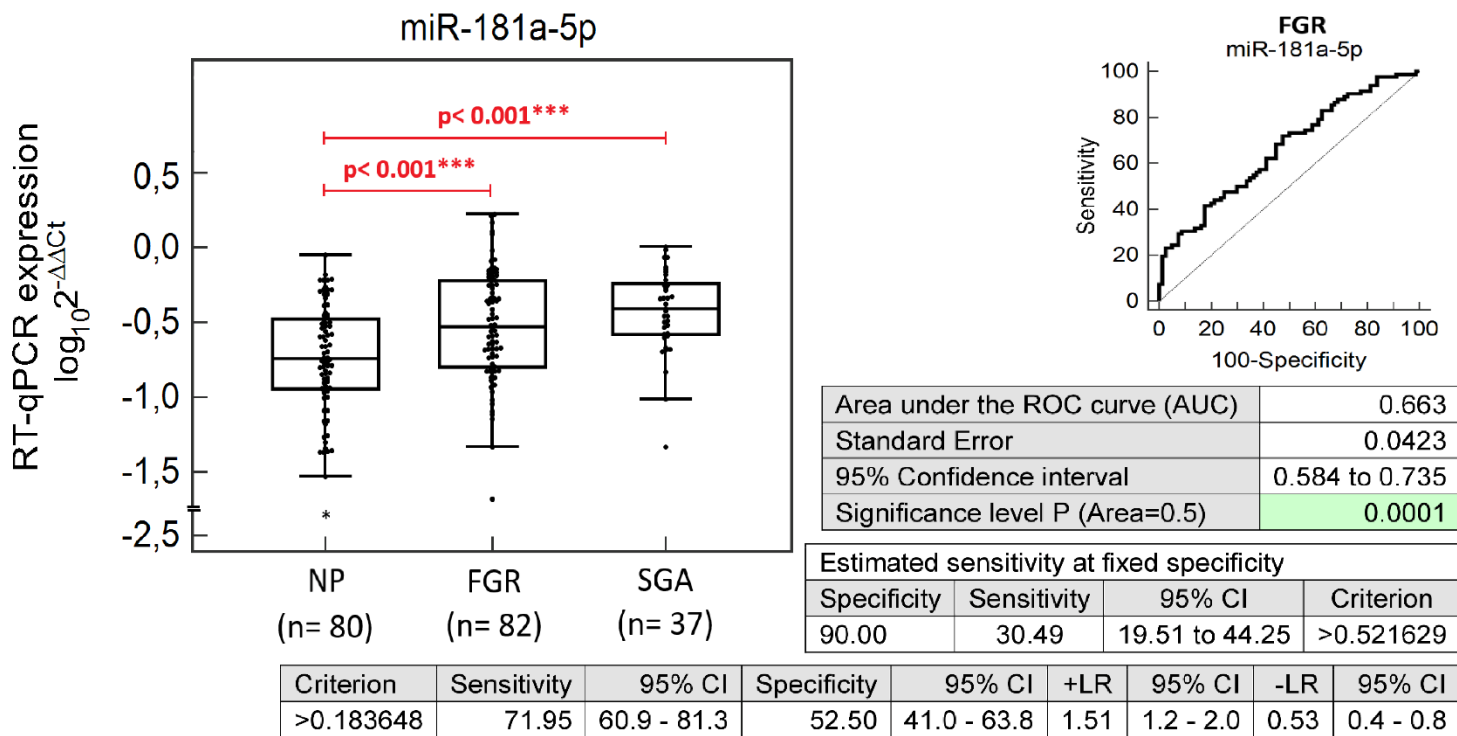
J



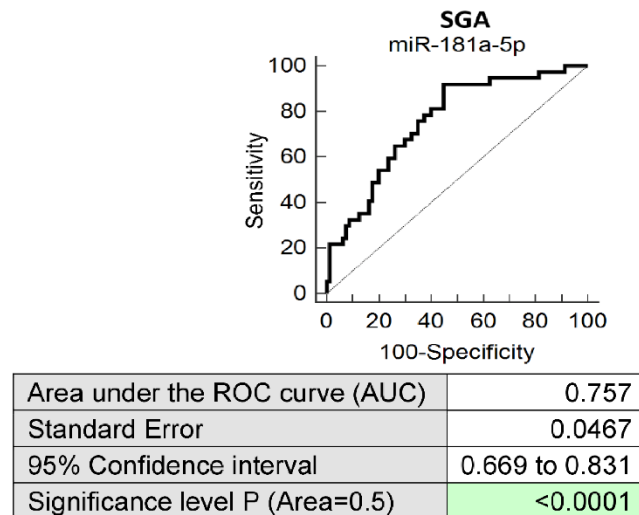
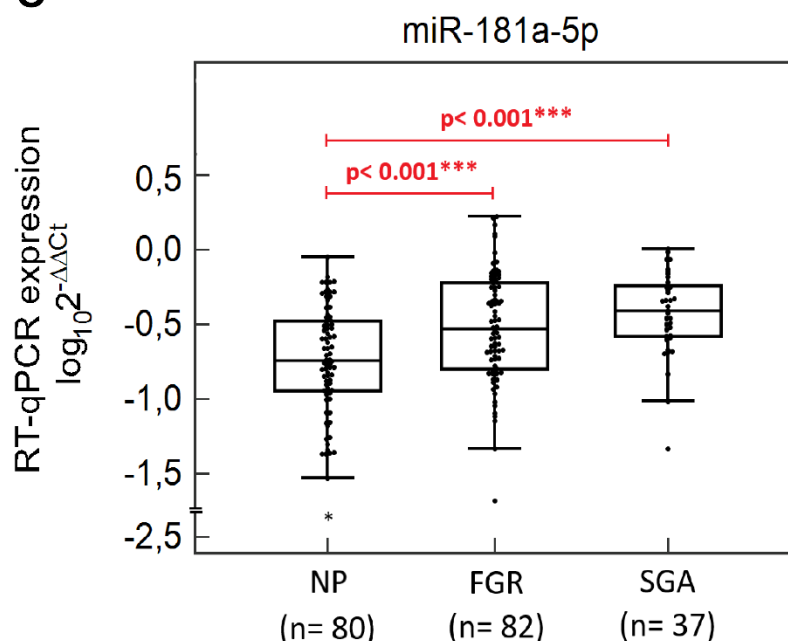
M



N



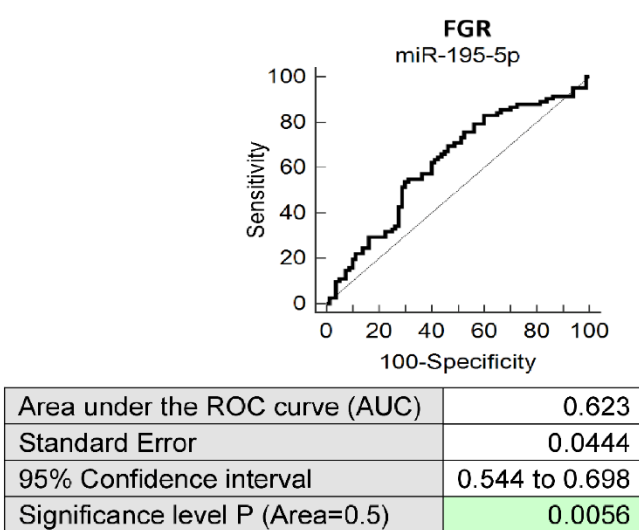
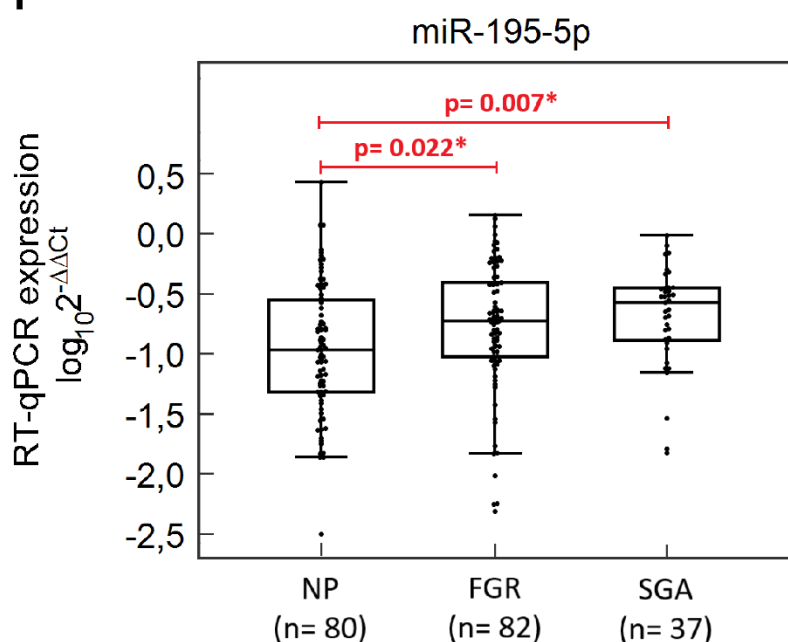
O



Estimated sensitivity at fixed specificity								
Specificity	Sensitivity	95% CI		Criterion				
90.00	32.43	16.22 to 56.76		>0.521629				

Criterion	Sensitivity	95% CI		Specificity	95% CI		+LR	95% CI	
>0.201448	91.89	78.1 - 98.3		55.00	43.5 - 66.2		2.04	1.6 - 2.6	
								0.15	
								0.05 - 0.4	

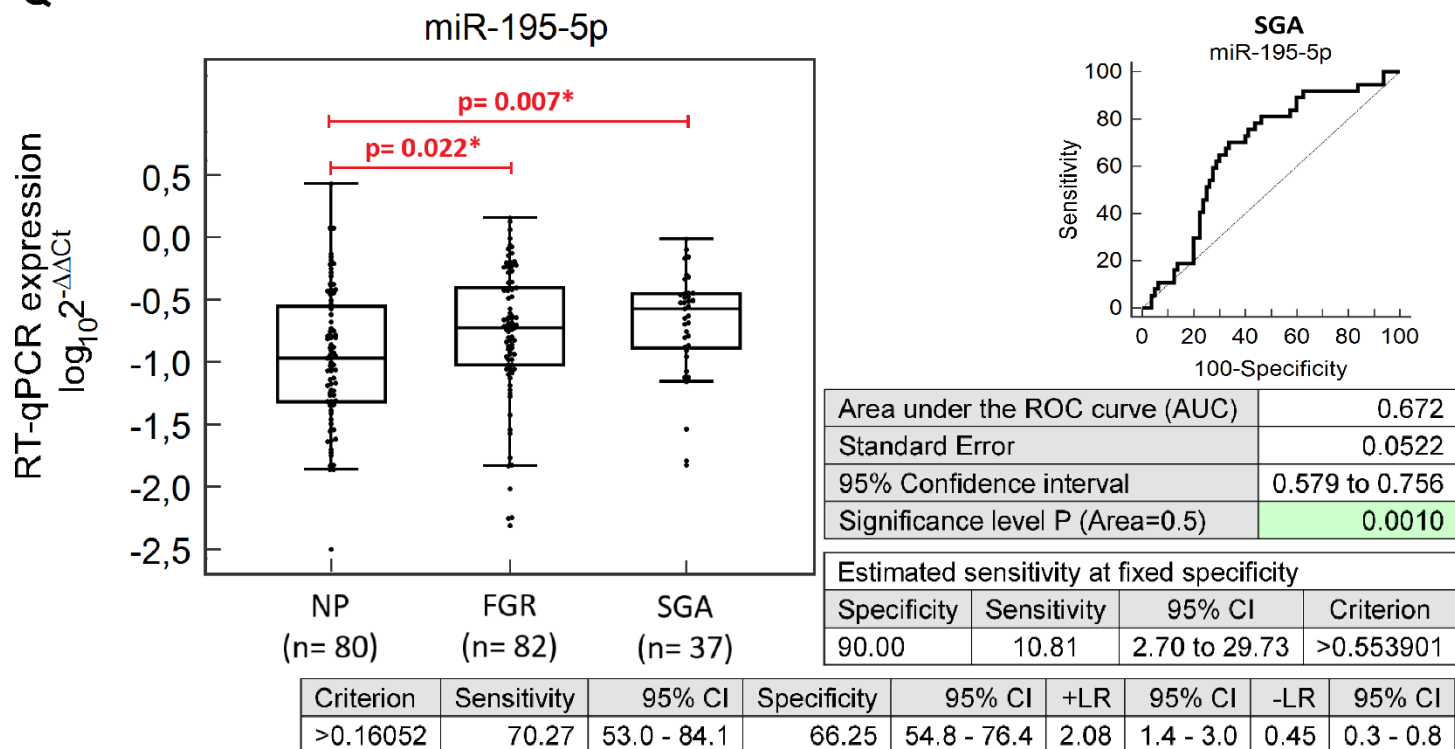
P



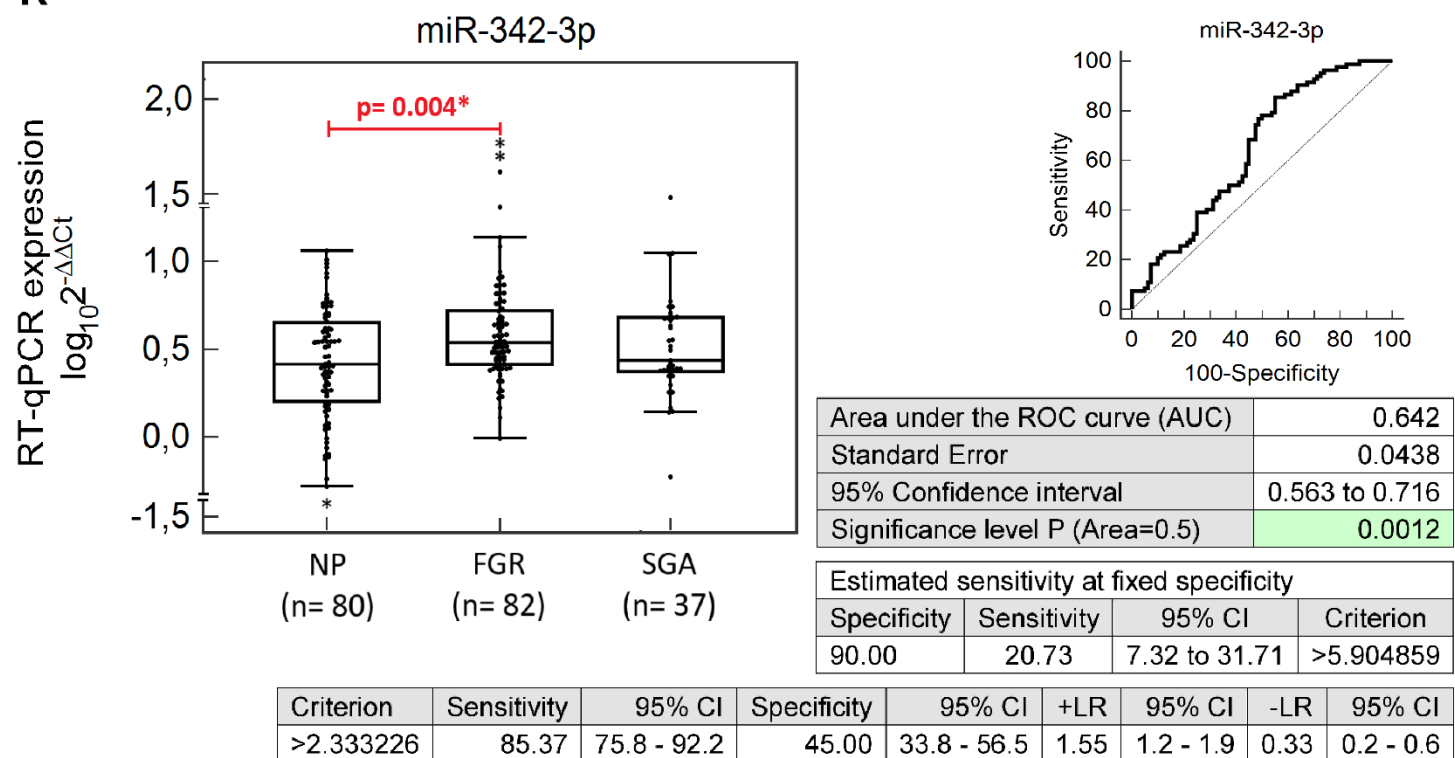
Estimated sensitivity at fixed specificity								
Specificity	Sensitivity	95% CI		Criterion				
90.00	19.51	7.32 to 32.93		>0.553901				

Criterion	Sensitivity	95% CI		Specificity	95% CI		+LR	95% CI	
>0.176527	53.66	42.3 - 64.7		70.00	58.7 - 79.7		1.79	1.2 - 2.6	
								0.66	
								0.5 - 0.9	

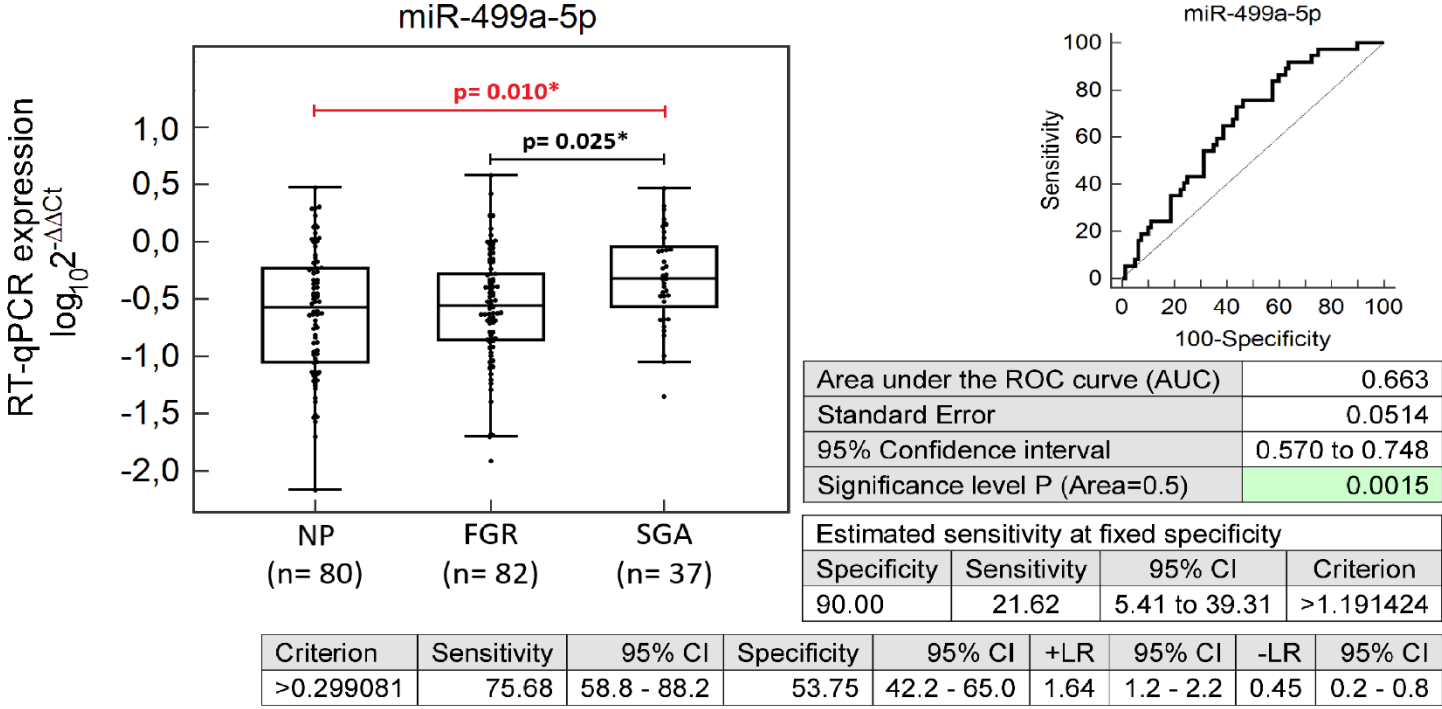
Q



R



S



T

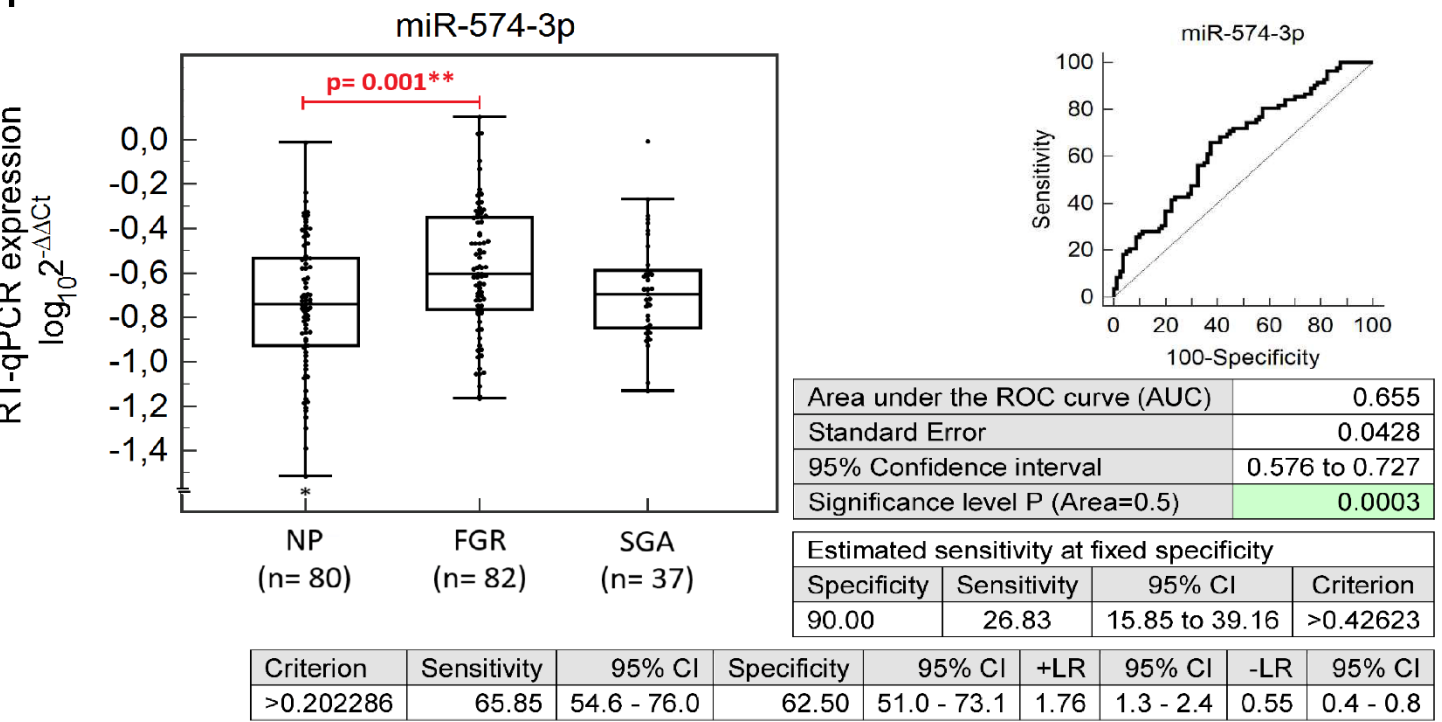


Figure S1: Gene expression of cardiovascular disease-associated microRNAs in peripheral blood leukocytes in early stages of gestation—comparison between appropriate-for-gestational-age (AGA) fetuses, small-for-gestational-age (SGA) fetuses, and fetal growth-restricted (FGR) fetuses; statistical significant data after Benjamini–Hochberg correction (results after the Benjamini-Hochberg correction are marked by * for $\alpha=0.05$, ** for $\alpha=0.01$, and *** for $\alpha=0.001$).

NP, normal pregnancies (appropriate-for-gestational-age fetuses); FGR, fetal growth restricted fetuses; SGA, small-for-gestational-age fetuses

