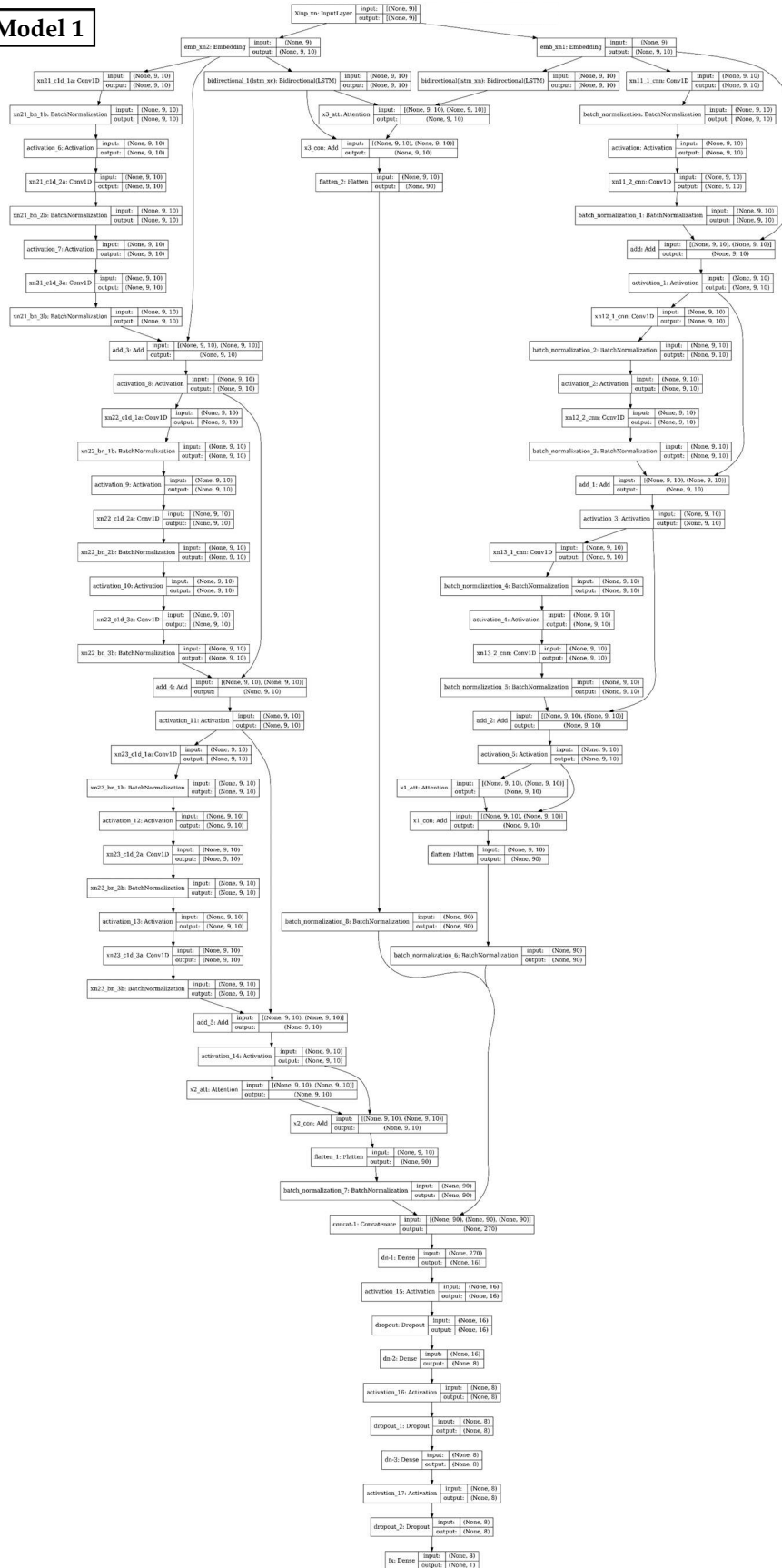
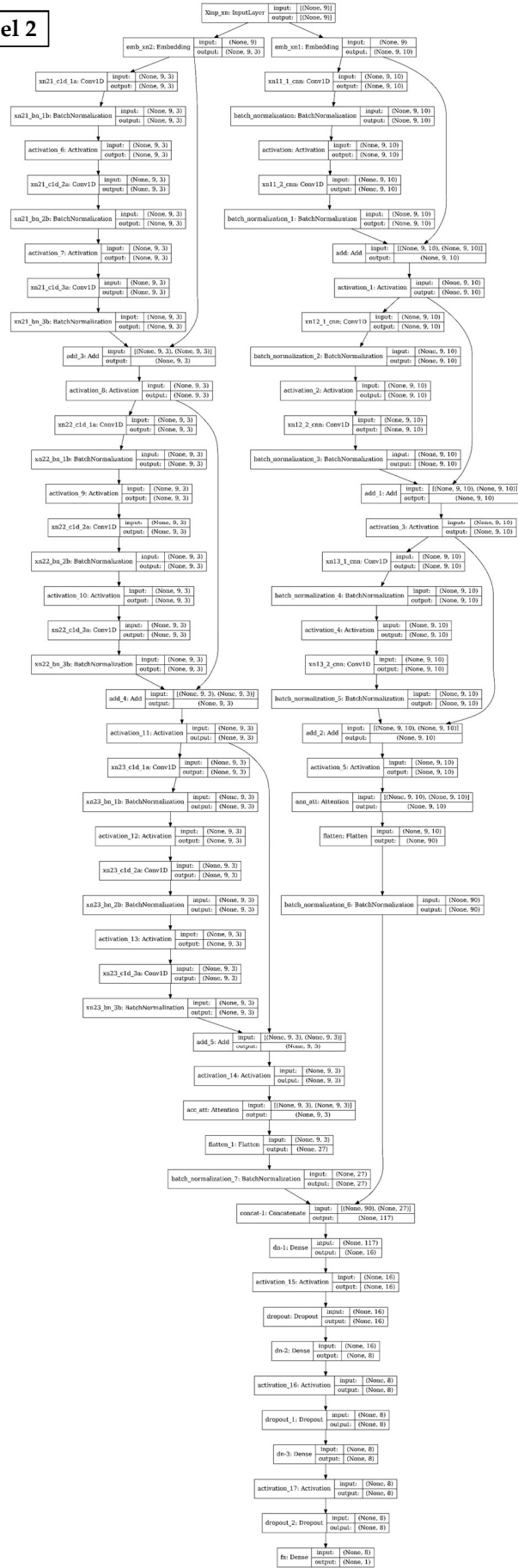


Supplementary information

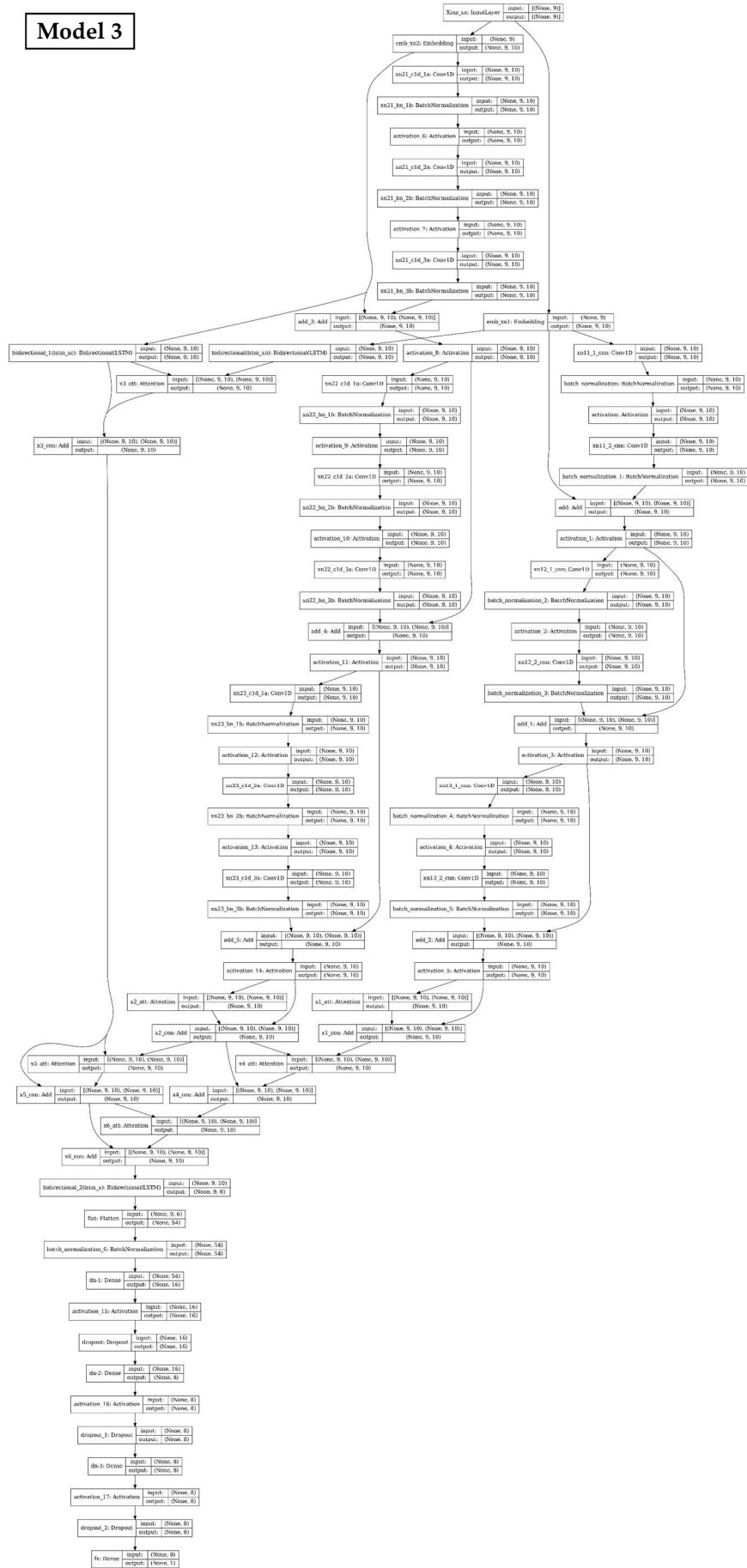
Model 1



Model 2



Model 3



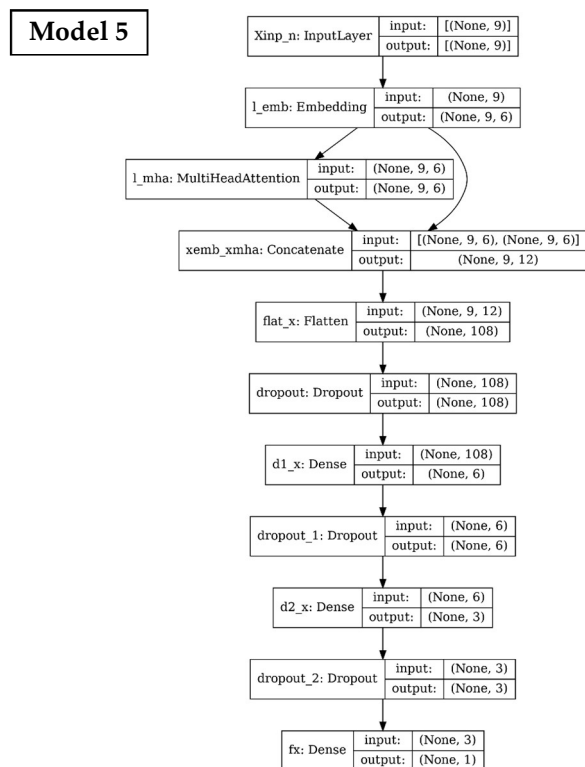
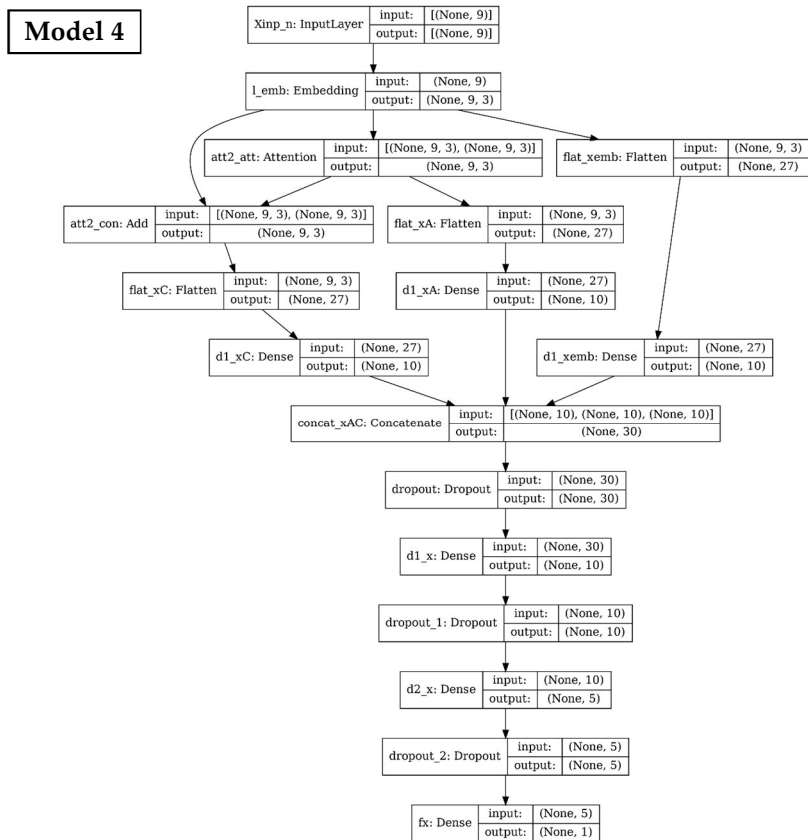


Figure S1. Model architecture of the 5 models (Model 1 to Model 5) in AiCPP. Each box represents one layer. There are embedding layers, CNN layers, LSTM layers, attention layers, etc.

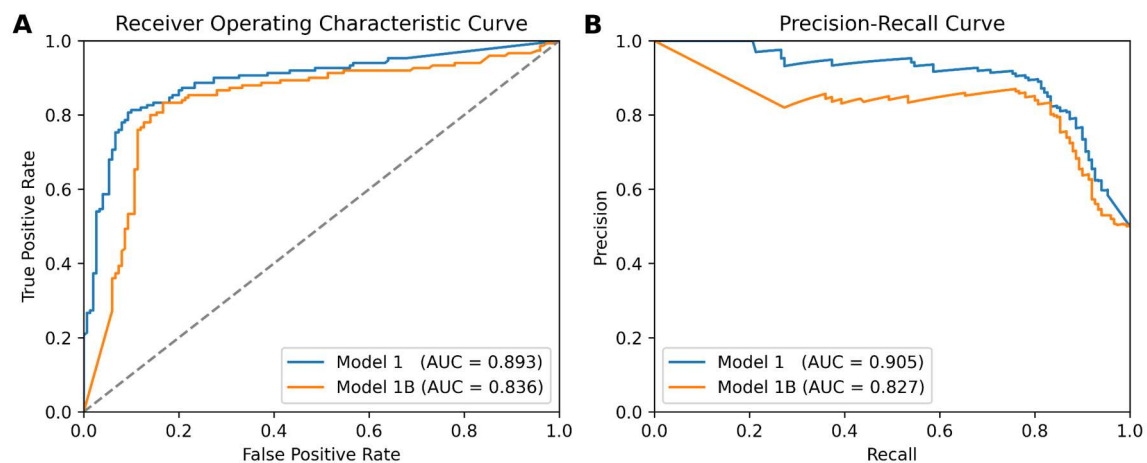


Figure S2. Comparison of the model performance by the ROC-metric with (Model 1) and without (Model 1B) the use of a large number of the 11,046,343 9-mers negative datasets derived from human reference proteins.

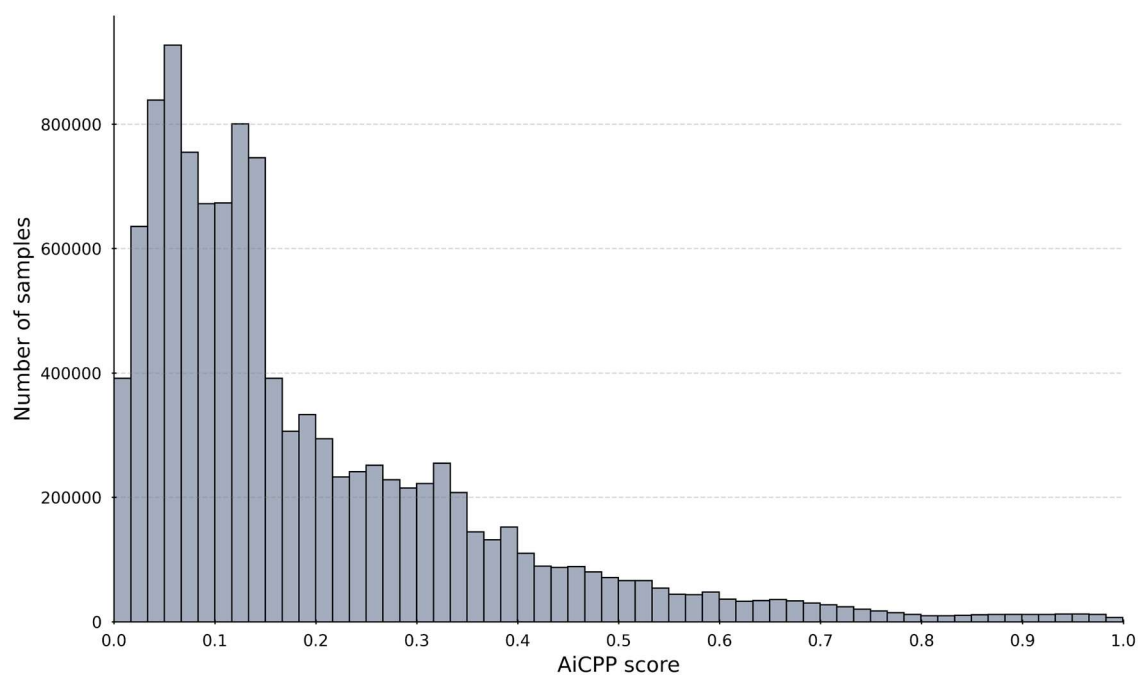


Figure S3. The AiCPP scores for the 11,046,343 9-mers generated from human reference proteins. There are about 770,435 or 6.97% 9-mers with AiCPP scores ≥ 0.5 .

Table S1. Comparison of the metrics of the model performance with (Model 1) and without (Model 1B) the use of about 11 million of a large number of negative datasets derived from human reference proteins.

Models	AUC	MCC	ACC	SEN	SPE	PRE
Model 1	0.893	0.711	0.853	0.800	0.907	0.896
Model 1B	0.836	0.640	0.820	0.833	0.807	0.812