

Figure S1: Flow cytometry gating strategy for neutrophils, monocytes/macrophages, inflammatory and non-inflammatory monocytes. Analyzed cells were live single cells (FSC/SSC, SSC-H/SSC-W, FSC-H/FSC-W, and 7-AAD/SSC-A dot plots are not shown).

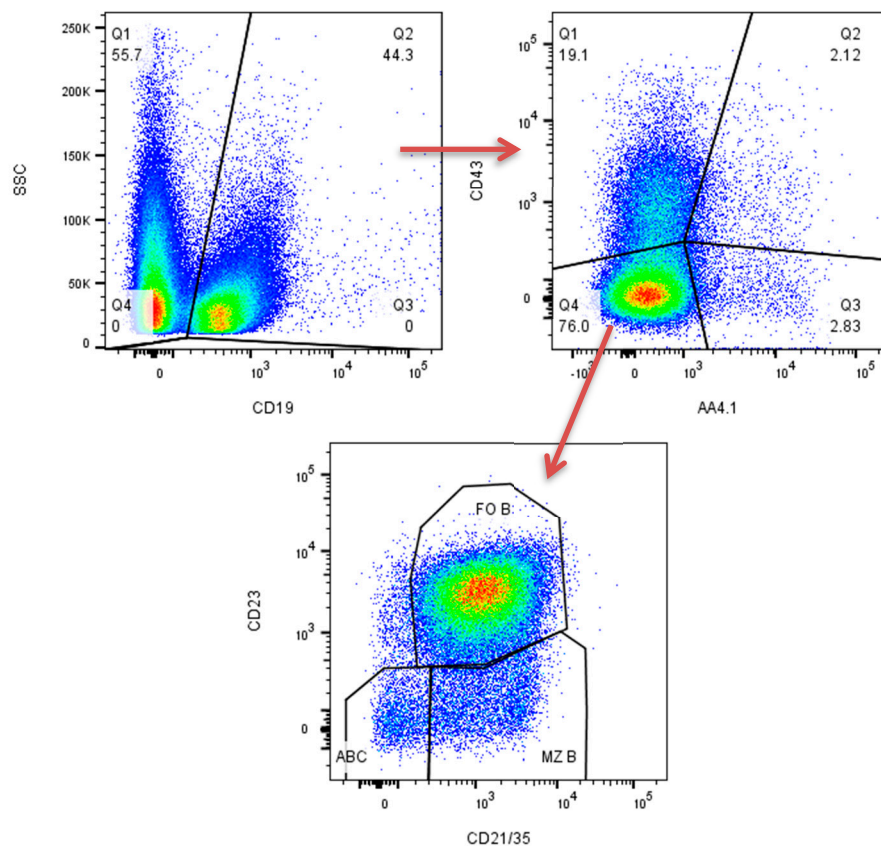


Figure S2: Flow cytometry gating strategy for ABCs, FO B cells and MZ B cells. Analyzed cells were live single cells.

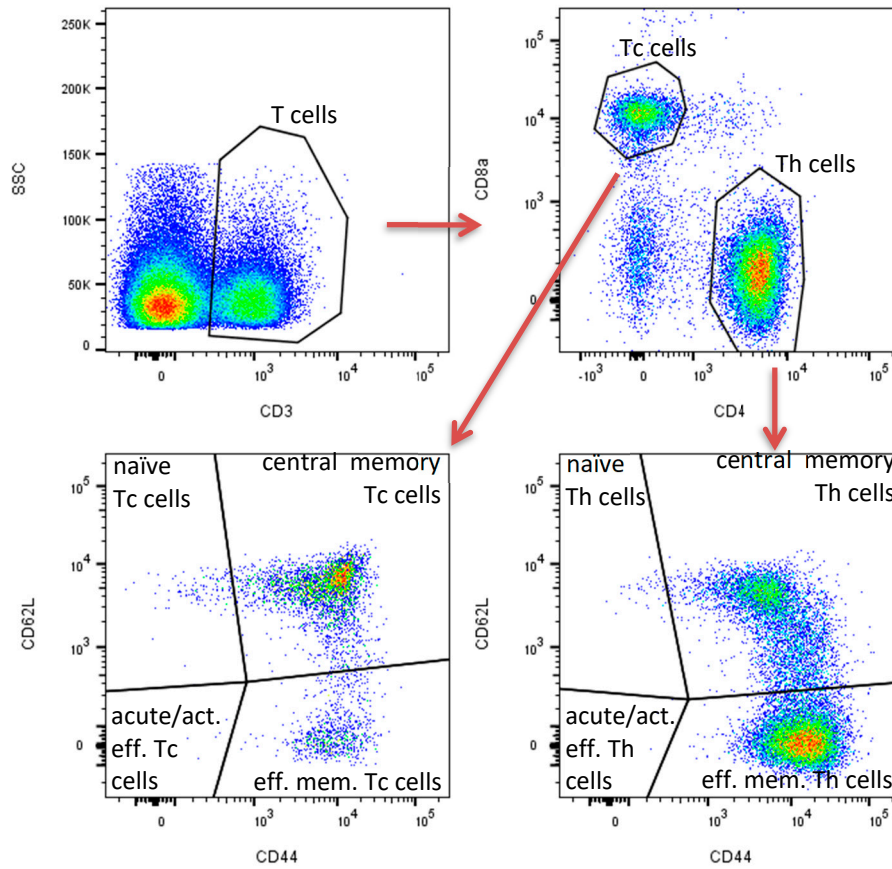


Figure S3: Flow cytometry gating strategy for Th and Tc cells. Analyzed cells were live single cells.

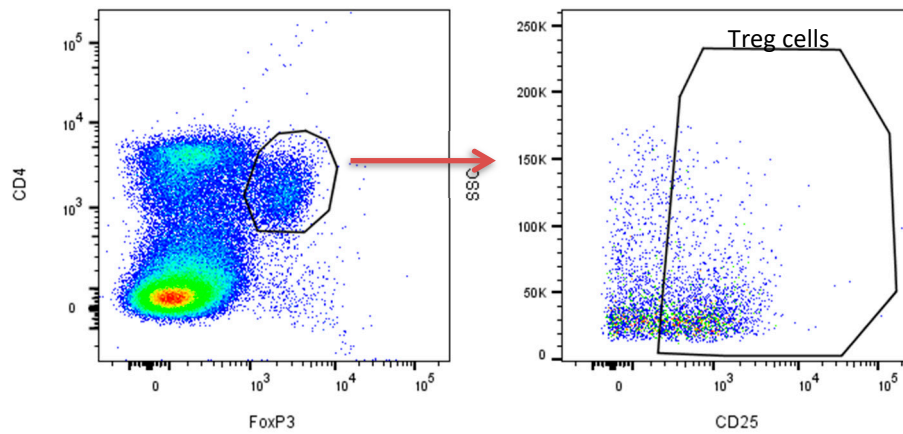


Figure S4: Flow cytometry gating strategy for Treg cells. Analyzed cells were single cells.

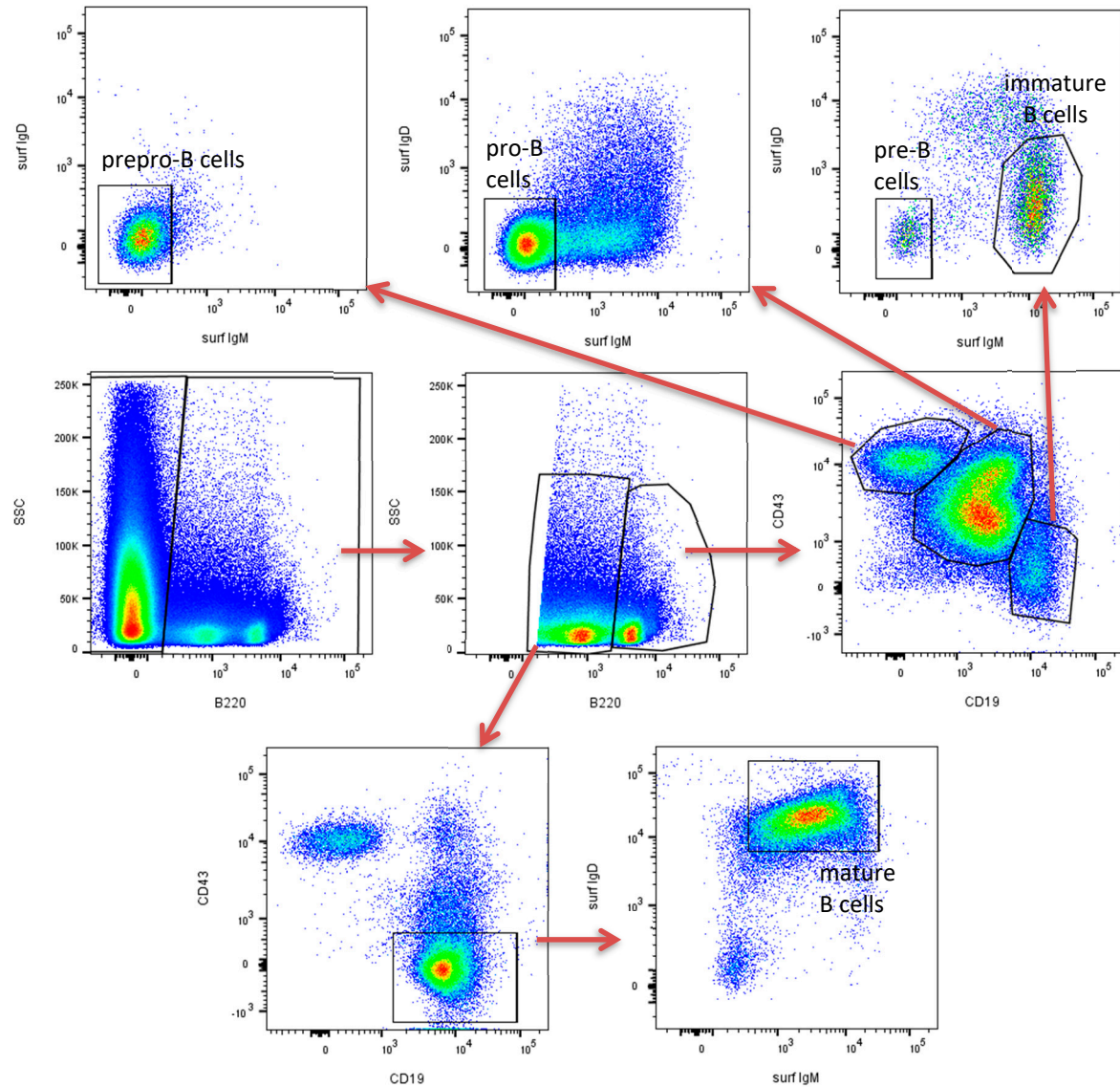


Figure S5: Flow cytometry gating strategy for prepro-B, pre-B, pro-B, immature and mature B cells. Analyzed cells were live single cells.

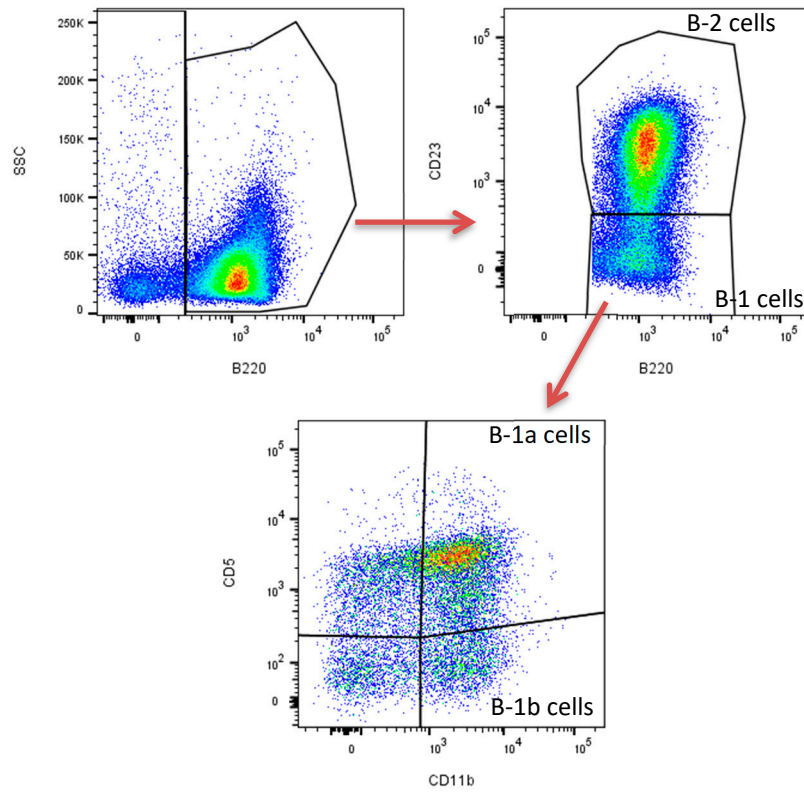


Figure S6: Flow cytometry gating strategy for B-2 and B-1 cells. Analyzed cells were live single cells.