

Supplementary Figures

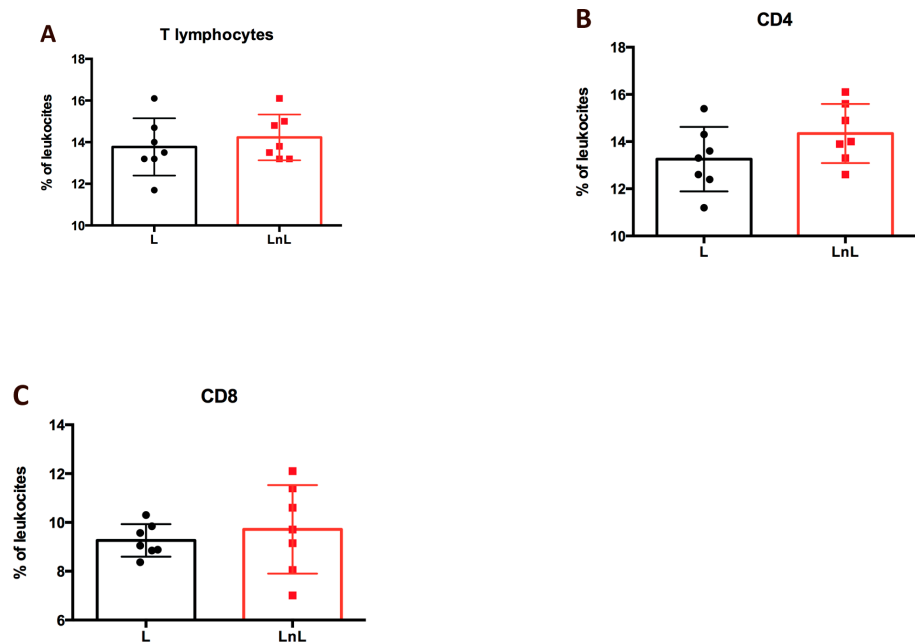


Figure S1. LnL condition has no impact on basal lymphocytes levels assessed in 2-months old mice. Graphs report the percentage of leukocytes (mean±SEM) classified as (A) T lymphocytes ($t_{(12)}=0.686$, $p=0.505$, n.s.), (B) CD4+ T lymphocytes ($t_{(12)}=1.550$, $p=0.147$, n.s.) and (C) CD8+ T lymphocytes ($t_{(12)}=0.618$, $p=0.547$, n.s.).

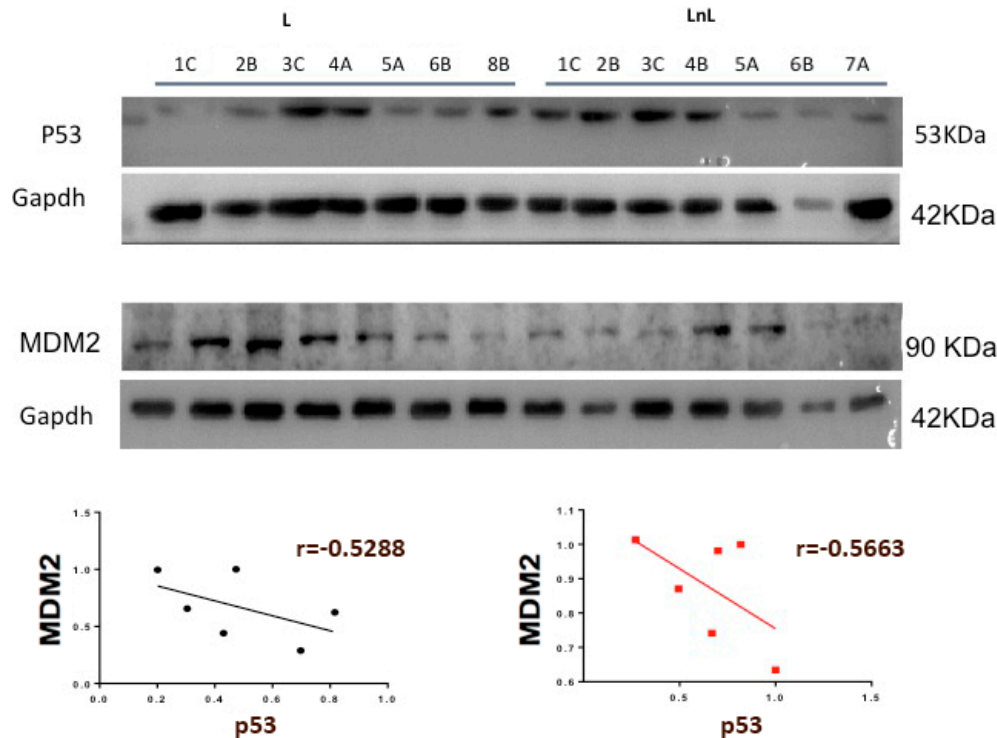


Figure S2. Negative correlation between Mdm2 and p53. (Top) WB analysis of indicated protein levels in muscles derived from animals of L and LnL groups, GAPDH was used as loading control. (Bottom) Graphs reporting a negative correlation between p53 and Mdm2 proteins levels in L and LnL groups. The relationships were compared between each pair of variables by Pearson correlation coefficient (confidence interval 95%), p-value of <0.05 considered as significant.

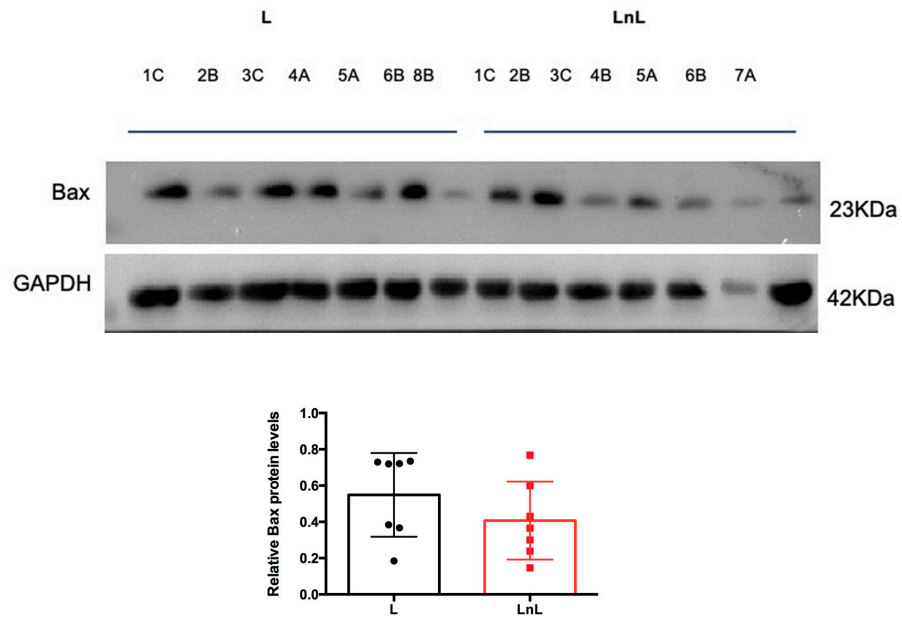


Figure S3. Unaltered Bax levels. **(Top)** WB analysis of indicated protein levels in muscles derived from animals of L and LnL groups, GAPDH was used as loading control. **(Bottom)** Grph reporting densitometric analysis of Bax relative to GAPDH levels (mean±SD) in indicated groups (two-tailed unpaired t-test: $t_{(12)}=1.190$, $p=0.257$, n.s.; $n=7$ /group).

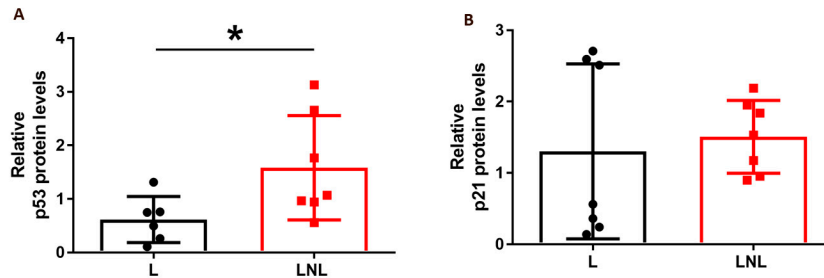


Figure S4. P53 levels are increased in fibrosarcoma of LnL animals. **(A)** Densitometric analysis of p53 relative to GAPDH levels (mean±SD) in indicated groups ($t_{(11)}=2.247$, $p=0.0461$, two-tailed unpaired t-test $n=7$, $*p<0.05$). **(B)** Densitometric analysis of p21 relative to GAPDH levels (mean±SD) in indicated groups (n.s., two-tailed unpaired t-test $n=7$). Note: these data include samples expressing both mutated and wild type p53 (see Figure 7).