

Table S1: List of antibodies used for cells characterization

Antibody name	Company	Dilution
CD13	Santa Cruz (sc-136484)	1:500
CD14	Merck Millipore (2003608)	1:200
CD44	Cell Signaling (5640S)	1:800
CD45	Merck Millipore (2003607)	1:200
CD54	Merck Millipore (MAB2130)	1:100
CD90	Dianova (T3130)	1:100

Table S2: List of antibodies used for immunocytochemistry

Antibody name	Company	Dilution
Anti-globoside GL4	Matreya LLC (1960)	1:250
Ku80	Cell Signaling (C48E7)	1:200
Anti-Integrin alpha 5	Abcam (ab150361)	1:250
Anti-Integrin beta 1	Abcam (ab179471)	1:250
CD31	Abcam (ab264089)	1:200
CD54	Merck Millipore (MAB2130)	1:250
Alexa Fluor 488	Invitrogen (A-11094)	1:500
Alexa Fluor 488	Invitrogen (A-11001)	1:500

Table S3: Primer sequences of genes analyzed by real-time PCR

Gene	Primers
<i>c-Fos</i> (Rat)	FW: 5'-GGGAGCTGACAGATACGCTC-3' RV: 5'-TCAAGTCCAGGGAGGTCACA-3'
<i>c-Jun</i> (Rat)	FW: 5'-GCCACCGAGACCGTAAAGAA-3' RV: 5'-TAGCACTCGCCCAACTTCAG-3'
<i>GAPDH</i> (Rat)	FW: 5'-AGTGCCAGCCTCGTCTCATA-3' RV: 5'-ATGAAGGGGTCGTTGATGGC-3'
<i>c-Fos</i> (Human)	FW: 5'-GCCTCTCTTACTACCACTCACC-3' RV: 5'-AGATGGCAGTGACCGTGGGAAT-3'
<i>c-Jun</i> (Human)	FW: 5'-CCTTGAAAGCTCAGAACTCGGAG-3' RV: 5'-TGCTGCGTTAGCATGAGTTGGC-3'
<i>GAPDH</i> (Human)	FW: 5'-GTCTCCTCTGACTTCAACAGCG-3' RV: 5'-ACCACCCTGTTGCTGTAGCCAA-3'

Table S4: List of antibodies used in western blotting

Antibody name	Company	Dilution
c-Fos	Thermo Scientific (MA536080)	1:2000
p-c-Fos	Thermo Scientific (PA5-105995)	1:1000
c-Jun	BD Biosciences (610326)	1:500
p-c-Jun	BD Biosciences (558036)	1:500
JNK	Cell Signaling (9258s)	1:1000
p-JNK	Thermo Scientific (700031)	1:1000
ERK	Cell Signaling (137F5)	1:1000
p-ERK	Santa Cruz Biotechnology (sc-16982)	1:500
GAPDH	Invitrogen (MA5-15738)	1:1000
HRP-Goat- anti Rabbit IgG	Life Technologies (656120)	1:10 000
HRP-Goat anti Mouse IgG	Life Technologies (626520)	1:10 000

Figure S1: Chromatograms of GFP-VP1u purification. A - Chromatogram of GFP-VP1u purification in a Q sepharose column. Black line – optical absorption at 280 nm, red – conductivity. B – Chromatogram of GFP-VP1u purification in a Superdex75 column.

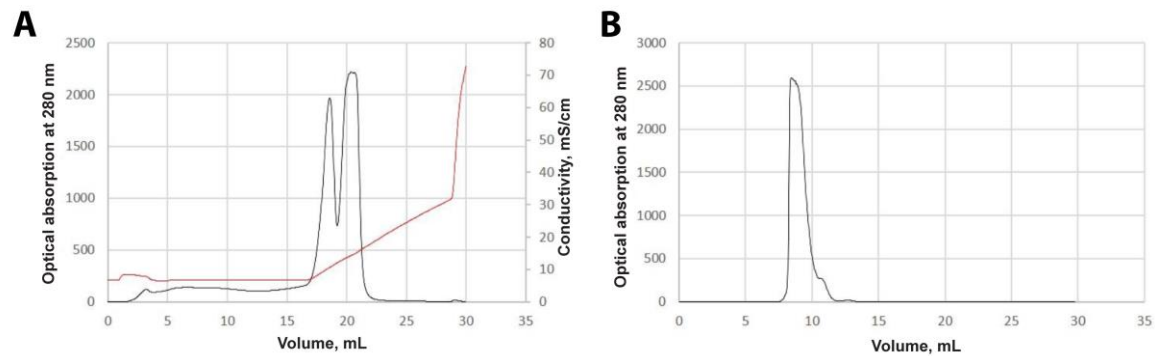


Figure S2: GFP-VP1u presence in cells. GFP was used as the negative control.

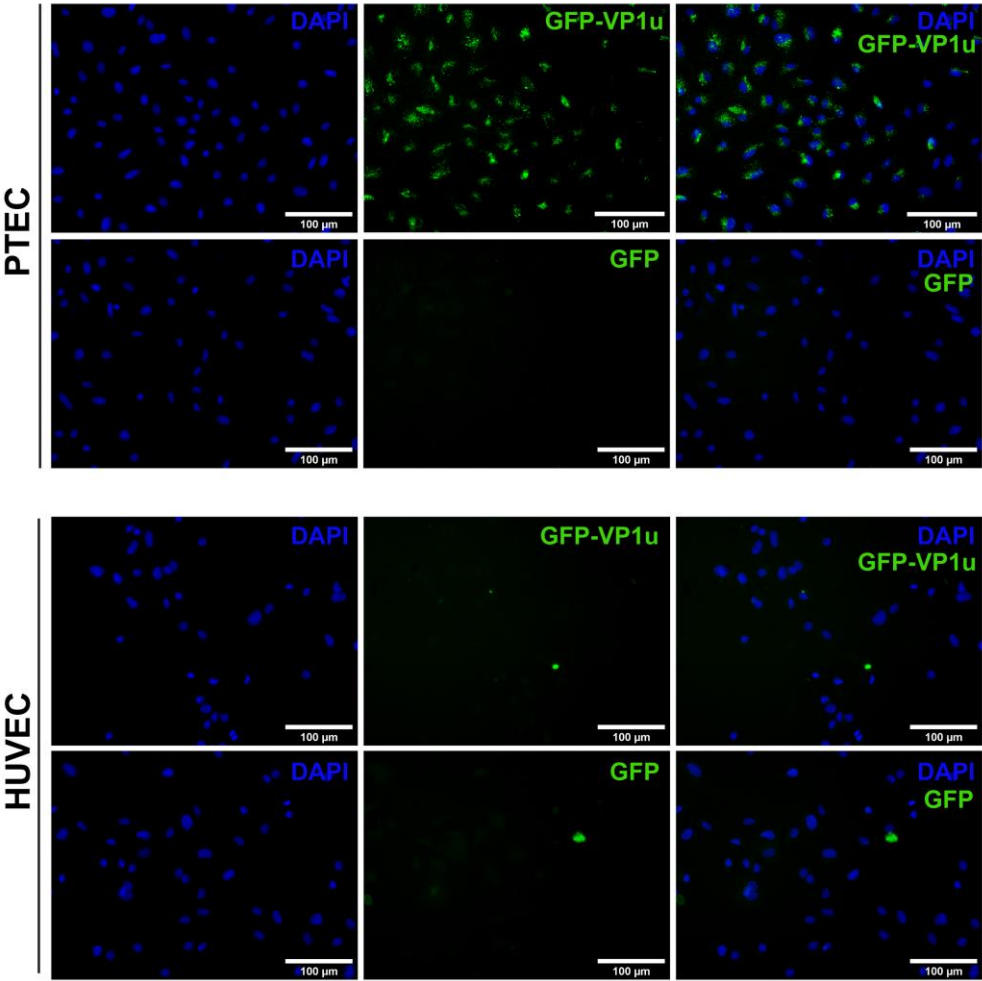


Figure S3: Images of original uncropped Western blots used for the preparation of Figure 4

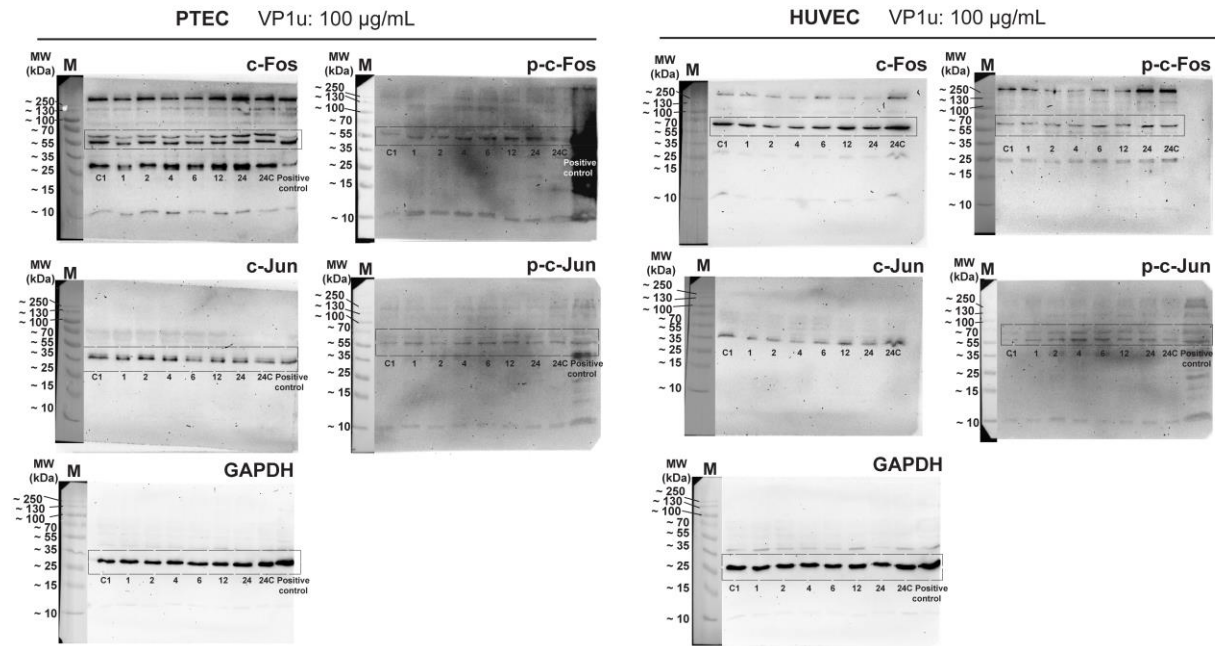


Figure S4: Images of original uncropped Western blots used for the preparation of Figure 5

