

Supplementary materials

Fig. S1 (a) Maximum Likelihood (ML) tree showing the relationship among D-loop haplotypes of *Batagur affinis*, *Batagur borneoensis* and *Dermochelys coriacea*. The number at each node represents the bootstrap value % based on 1000 pseudoreplication for the ML analysis. **(b)** Maximum Parsimony (MP) Tree showing the relationship between the D-loop haplotypes of *Batagur affinis*, *Batagur borneoensis* and *Dermochelys coriacea*. The number at each node represents the bootstrap value % based on 1000 pseudoreplication for the MP analysis.

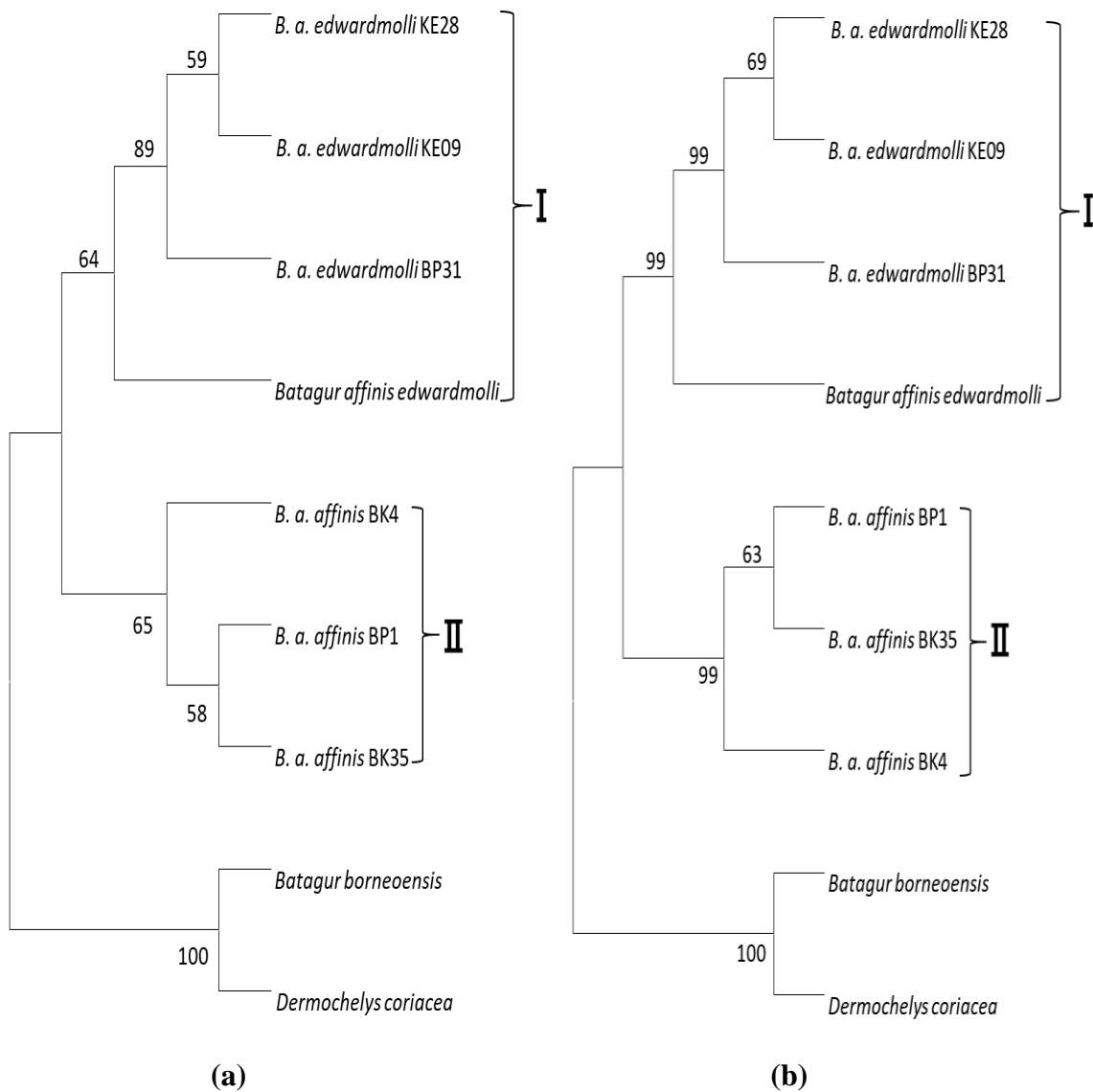


Fig. S2 The plot of transition (X) and transversion (Δ) against divergence using the F84 distance method.

