

Figure S1. Phenotypic variation in *B. mojavensis* PS17. Red arrows indicated translucent colonies of *B. mojavensis* PS17.

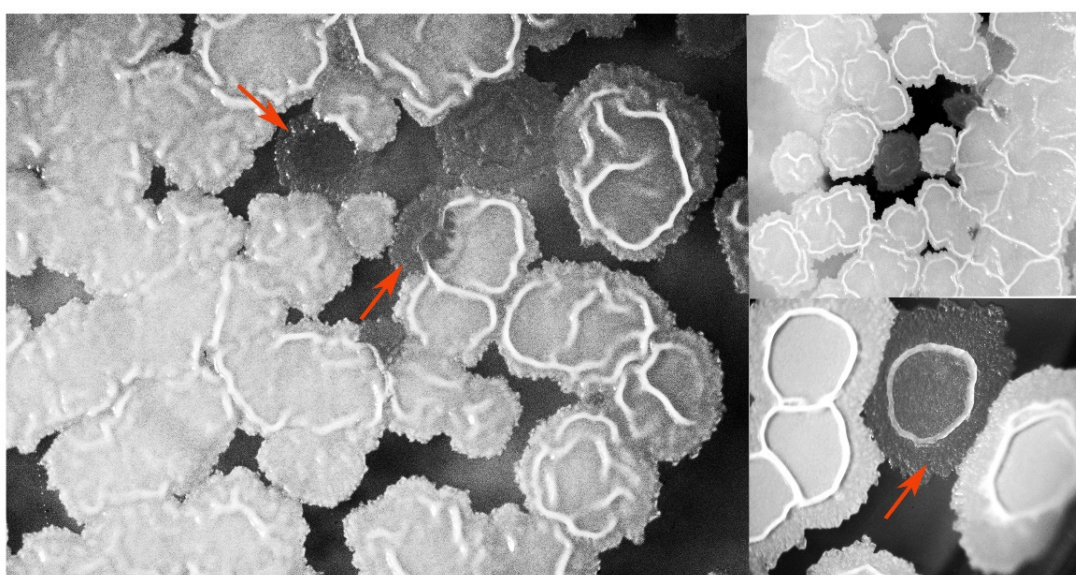


Figure S2 *B. mojavensis* PS17 observed under stereomicroscope (Zeiss Jena Technival 2, Germany). Red arrows indicated translucent colonies of *B. mojavensis* PS17.

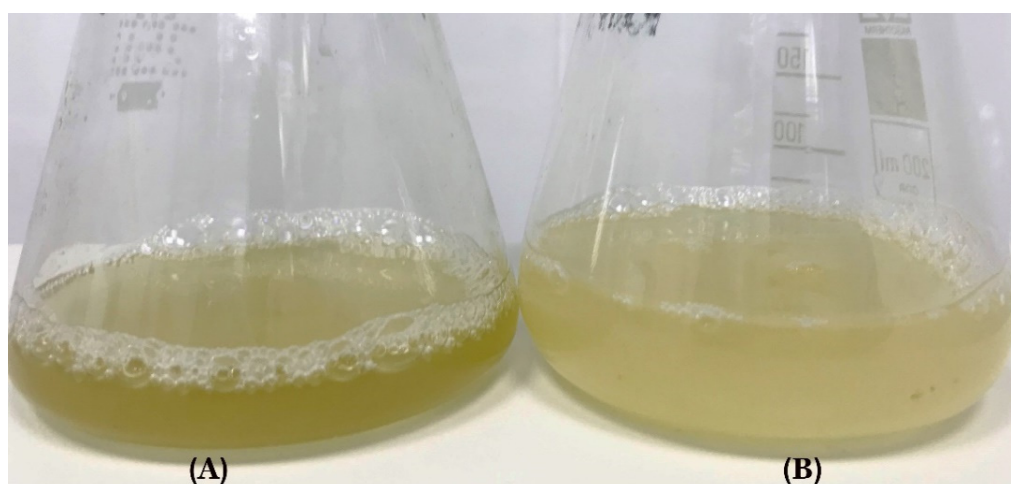


Figure S3 *B. mojavensis* strain PS17(II) (A) and PS17(I) (B) grown in LB medium