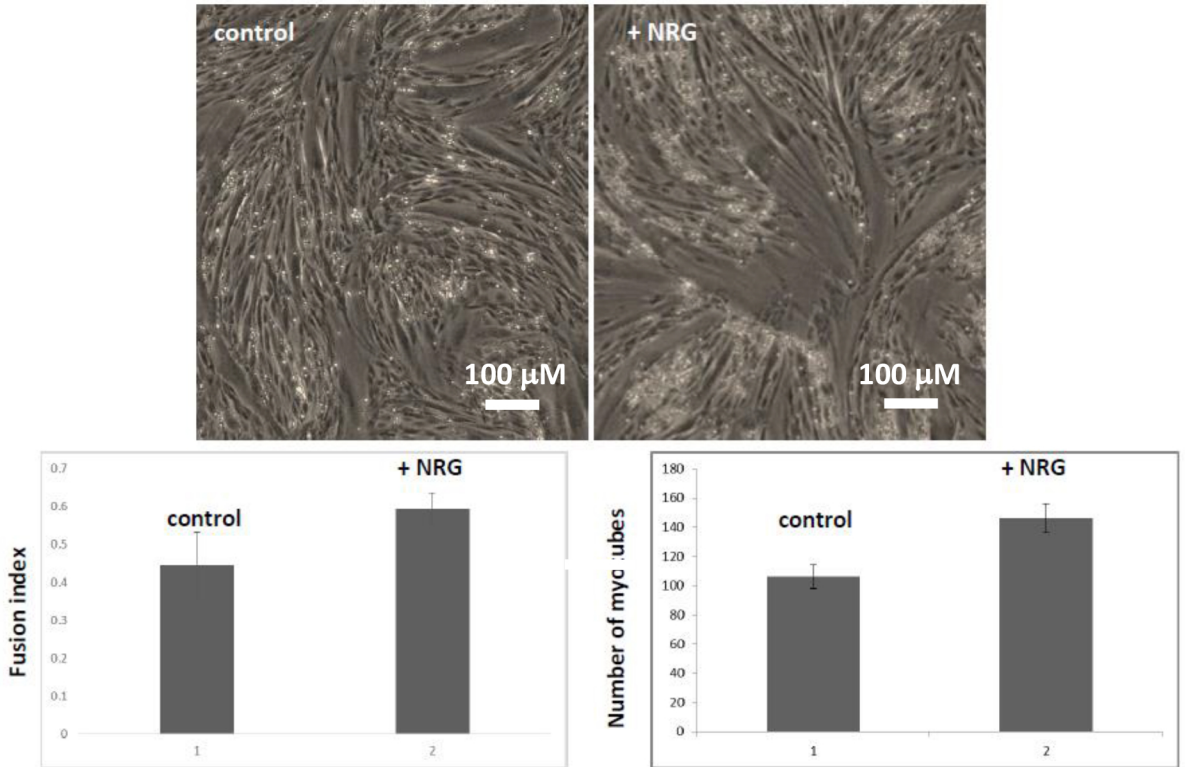


## Appendix B: Supplementary Figures



**Figure S1:** L6 myoblasts were differentiated in DMEM with 0.2% BSA in the absence or treatment (control, top left) or with neuregulin (+ NRG, top right). The cells were stained, as described in the Materials and Methods section, and the fusion index (bottom left) and number of myotubes (bottom right) were determined, as shown graphically.